



WHITTONS
AUCTIONEERS & VALUERS



CHRISTMAS AUCTION

30th November 2017





CHRISTMAS AUCTION

THURSDAY 30TH NOVEMBER 2017

Commencing at 10.00am

Live Internet bidding via

the-saleroom.com

EACH LOT IS ILLUSTRATED ONLINE

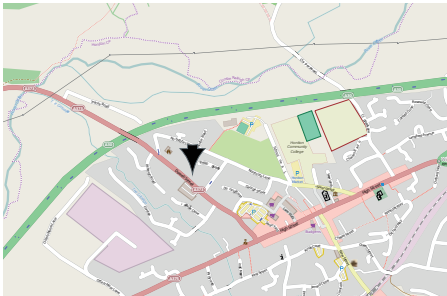
VIEWING TIMES:

Sunday 26th November 10.00am – 1.00pm

Monday 27th November 9.30am – 4.30pm

Tuesday 28th November 9.30am – 4.30pm

Wednesday 29th November 9.30am – 4.30pm



**THE FINE ART AUCTION ROOMS
DOWELL STREET
HONITON
DEVON**

EX14 1LX

01404 517000 · 01392 345454 · 01726 983734

info@whittonsauctions.co.uk

www.whittonsauctions.co.uk

**ALL COMMISSION AND TELEPHONE BIDS MUST
BE REGISTERED WITH THE AUCTIONEERS
BY 4.30PM THE DAY BEFORE THE SALE AND
NO GUARANTEES WILL BE GIVEN FOR LATE
RECEIPT.**

**YOU MUST REGISTER TO BID. PHOTOGRAPHIC
IDENTIFICATION REQUIRED.**

**A 10% DEPOSIT OF THE LOWER ESTIMATE
OF THE LOT(S) ON WHICH YOU WISH TO
BID IS REQUIRED FOR ALL TELEPHONE BIDS.
BIDDING FORMS AVAILABLE ON OUR WEBSITE.**

**PHOTOGRAPHIC IDENTIFICATION REQUIRED
FROM ANYONE WISHING TO VIEW THE
JEWELLERY.**

BUYERS PREMIUM 18% + VAT

Order of sale

Thursday 30th November

Silver and Jewellery 1-217

There will now be a 10 minute break.

Toys, Collectables and Works of Art 241-454

Furniture 501-600

There will now be a 10 minute break.

Vintage Wines and Spirits 601-End



Cover Illustrations

Inside front: Lot 97

Inside back: Lot 216

Back: Lot 98

SILVER, JEWELLERY AND WATCHES

- 1.** A good small treasury inkstand with hinged top on bun feet. London. By CS&Co. Approx. 18 cms long. *Est. £300 - £400.*
- 2.** A pair of Indian tapered spill vases with wavy edges. Approx. 306 grams. *Est. £30 - £40.*
- 3.** A Georgian sifter ladle with OE handle. London. By BG. Approx. 27 grams. *Est. £20 - £30.*
- 4.** A long embossed paper knife decorated with flowers and leaves. London. By CL. *Est. £30 - £50.*
- 5.** A good set of six heavy commemorative spoons contained within a fitted box. Sheffield. By B&S. Approx. 159 grams. *Est. £100 - £150.*
- 6.** A good set of twelve commemorative teaspoons together with matching tongs contained within a fitted box. Sheffield. By DF. *Est. £150 - £200.*
- 7.** A pair of good quality large brass and silver and overlaid wall plaques mounted with figures and scrolls. Approx. 25 cms in diameter. *Est. £80 - £120.*
- 8.** An unusual French silver mounted purse decorated with dragons marked to top. *Est. £80 - £120.*
- 9.** A good boxed set of Georgian OE teaspoons together with matching tongs. London. By WB. Approx. 118 grams. *Est. £60 - £80.*
- 10.** A large oval Continental tray attractively decorated with figures and fruit with crimped rim. Approx. 31 cms in diameter. 282 grams. *Est. £150 - £200.*
- 11.** An unusual fountain pen holder with textured design. Edinburgh modern. Approx. 192 grams. 11 cms high. *Est. £250 - £300.*
- 12.** An unusual Continental scent bottle, the hinged top inset with gemstone to gilt interior with pedestal base revealing secret compartment hallmarked RPS. *Est. £150 - £200.*
- 13.** A good quality in date Victorian embossed sugar bowl with flowers and crest. London. By WKR. Approx. 210 grams. *Est. £150 - £200.*
- 14.** A pair of Victorian toddy ladles with whale bone handles. London. By WK. *Est. £30 - £50.*
- 15.** A good Victorian wine label embossed with flowers and grapes. Birmingham. By JG. *Est. £30 - £50.*
- 16.** A set of six rat tail teaspoons. Birmingham. By BB. Approx. 55 grams. *Est. £20 - £30.*
- 17.** A quantity of bright cut and other teaspoons. Various dates and makers. Approx. 129 grams. *Est. £30 - £50.*
- 18.** A pair of unusual Glastonbury bowls with ball decoration. Birmingham. By JG. Approx. 406 grams. *Est. £200 - £250.*
- 19.** A Continental bowl with textured design and gilt interior. Approx. 162 grams. *Est. £60 - £80.*
- 20.** An attractively decorated cigarette box with hinged top and engine turned decoration. Birmingham. By JG Ltd. *Est. £100 - £150.*

21. An unusual vine decorated goblet with hammered body. London. By CC&Co. Approx. 182 grams. 10 cms high. Est. £200 - £250.

22. An American swing handled basket heavily embossed with flowers and leaves on pedestal base. Approx. 167 grams. Est. £100 - £150.

23. A large punch ladle with crimped rim and double pouring lip on turned handle. Sheffield. By RVV. Approx. 42 cms in length. Est. £120 - £150.

24. A silver and glass clip with ribbon decoration and central turquoise. Approx. 7 cms in length. Est. £80 - £100.

25. A good tapering silver cup with half fluted decoration. London. By HS. Approx. 335 grams. Est. £180 - £220.

26. A group of four enamelled Masonic medals together with matching ribbons. Approx. 123 grams. Est. £30 - £50.

27. A small paperclip in the form of a trowel. Est. £20 - £30.

28. A pair of Georgian bright cut silver sugar tongs. London. By PBAB&VVB. Est. £20 - £30.

29. An unusual silver Victorian large paper knife with embossed handle. Approx. 40 cms in length. Est. £60 - £80.

30. A small cherub decorated silver mounted paper knife with flowers and leaves. Birmingham. 1904. Approx. 27 cms in length. Est. £50 - £80.

31. A massive silver top inkwell mounted with pocket watch and cut glass face. London. By JGV. Approx. 10 cms high. Est. £150 - £200.

32. A pair of unusual sugar nips in the form of a harlequin with textured body. London. Approx. 12 cms in length. Est. £100 - £150.

33. An attractive boxed set of six teaspoons with duck mounts. Birmingham. By A Bros. Est. £120 - £150.

34. A Russian snuff box engraved with horse and cart. Approx. 140 grams. Est. £50 - £80.

35. An engine turned nail buffer and cover marked Sterling. Est. £30 - £40.

36. A pair of pink enamelled and silver handled scissors with gilt decoration. Est. £40 - £60.

37. An enamelled hand mirror decorated with flowers. Birmingham. By HDG. Est. £50 - £80.

38. A boxed matched pair of sugar casters with lift off covers. Chester. By HM. Approx. 16 cms high. 222 grams. Est. £100 - £150.

39. A small Continental goblet mounted with stylish flowers. Approx. 123 grams. 10 cms high. Est. £60 - £80.

40. A silver back hand mirror decorated with swags and bows. Est. £30 - £50.

41. A pair of good Georgian boat shaped salts complete with blue glass liners and spoons with gilt bowls. London. By AT. Est. £80 - £120.

42. A small tapering christening cup with reeded body. London. By S&Co. Approx. 189 grams. 9 cms high. Est. £80 - £120.

43. An Indian christening cup attractively decorated with flowers, leaves and snakes. Approx. 130 grams. 7.5 cms high. Est. £50 - £80.

44. A good Indian silver heart shaped box decorated with flowers and leaves together with one other. Approx. 134 grams. Est. £80 - £120.

45. A Chinese silver two handled bowl of typical design with flowers and branches. Marked to base. Approx. 235 grams. Est. £250 - £300.

46. A good pair of large picture frames with panelled backs. Chester. Approx. 24 cms high. Est. £180 - £220.

47. A Continental silver spoon with gilt top and engraved bowl. Approx. 31 grams. Est. £20 - £30.

48. A set of four fiddle thread table forks. Sheffield. By H&W. Approx. 246 grams. Est. £50 - £80.

49. A bag containing a mixture of Irish, Exeter and other cutlery. Approx. 208 grams. Est. £50 - £80.

50. A good set of six Georgian silver bright cut teaspoons. London. By P&A Bateman. Approx. 70 grams. Est. £50 - £80.

51. A group of OE and other cutlery. Approx. 221 grams. Est. £50 - £80.

52. A silver mounted magnifier/paper knife with engraved decoration. London. By CAN. Approx. 31 cms in length. Est. £100 - £150.

53. A bag containing a small engraved vesta case with hinged top together with a stamp envelope. Est. £35 - £45.

54. A good rectangular cigarette box with hinged top on scroll feet and fitted interior. Dublin 1915. Est. £200 - £250.

55. A Continental nineteenth century two handled sugar bowl with blue glass liner on ball feet. Approx. 20 cms high. Est. £120 - £150.

56. A small silver tapering christening cup engraved with flowers. London. By GJ&DF. Approx. 140 grams. Est. £60 - £80.

57. An unusual Georgian double hinged top ceiling wax case. London. By RB. Approx. 9 cms in length together with a needle case. Est. £150 - £200.

58. A good set of twelve bright cut teaspoons together with matching tongs. London. Approx. 168 grams. Est. £100 - £150.

59. An unusual silver rattle with filigree and agate decoration. Approx. 10 cms in length. Est. £50 - £80.

60. A small silver rimmed scent bottle with cut glass body. Est. £20 - £30.

61. A good silver fronted watch case together with Goliath. Est. £50 - £80.

62. A large engraved goblet decorated with flowers and leaves. London. By CS&H. Approx. 320 grams. 24 cms high. Est. £120 - £150.

63. OMAR RAMSDEN AND ALWYN CARR: A rare circular caddy, the body of textured form with wavy bands to lift off cover mounted with five enamelled panels, and ball finial on five ball and claw feet inscribed to base "OMAR RAMSDEN ET ALWYN CARR ME FECERUNT". London. Approx. 374 grams. 42 cms high. Est. £3500 - £4000.

64. A set of six OE teaspoons. London. By FH. Approx. 62 grams. Est. £20 - £30.

65. A good quality plated four piece tea service with wooden handles. Est. £25 - £35.

66. A small MOP and embossed jam spoon. Approx. 13 cms in length. *Est. £20 - £30.*

67. A pair of heavy fiddle pattern sauce ladles. London. By JS&AS. Approx. 142 grams. *Est. £40 - £60.*

68. A small amber cigar holder contained within a leather box. *Est. £10 - £20.*

69. An attractively pierced ladle. Sheffield. By HL. *Est. £30 - £50.*

70. A good set of size early Georgian bottom marked spoons. London. By EP. *Est. £200 - £250.*

71. A heavy silver pepper grinder with screw on cover. Birmingham, Modern. By J&L. *Est. £60 - £70.*

72. A heavy oval Georgian hinged top snuff box with reeded sides and armorial. Approx. 8 cms in length. London. By RS. Approx. 134 grams. *Est. £300 - £350.*

73. A boxed christening spoon and fork together with a sifter spoon, Kings pattern tongs etc. Approx. 116 grams. *Est. £60 - £80.*

74. GEORG JENSEN: A pair of stylish servers of typical design. Approx. 74 grams. 15 cms in length. *Est. £150 - £200.*

75. A silver magnifier with tapering support together with a vesta, sherry label etc. *Est. £80 - £120.*

76. An attractively embossed silver picture frame decorated with scrolls and flowers together with one other. *Est. £80 - £120.*

77. Two heavy two handled Continental bowls with crested mounts. Approx. 210 grams. *Est. £60 - £80.*

78. An embossed and chased sugar bowl with beaded decoration. London. By GS&JG. Approx. 118 grams. *Est. £60 - £80.*

79. A small circular ring box with scroll mounts. Birmingham. By A Bros. *Est. £20 - £30.*

80. A good pair of bright cut sugar tongs with acorn terminals. Unmarked. *Est. £20 - £30.*

81. CONCORDE: A silver plated cased hip flask together with a desk lotter. *Est. £20 - £30.*

82. CONCORDE: A pair of silver circular picture frames with velvet back. *Est. £20 - £30.*

83. CONCORDE: A pair of silver wine labels contained within a fitted box. *Est. £30 - £40.*

84. CONCORDE: A travelling corkscrew, a bottle opener and bottle tops within a fitted box. *Est. £30 - £40.*

85. CONCORDE: A luggage label, filofax, notepad, etc. *Est. £20 - £30.*

86. A large brass and tortoiseshell quizzing glass. Approx. 12 cms in length. *Est. £80 - £120.*

87. CHARLES BOYTON: A good set of six silver tablespoons with tapering stems to cast busts of classical composers in a fitted box. London. *Est. £250 - £350.*

88. A Georgian OE soup ladle. London. By RC. *Est. £80 - £120.*

89. A Georgian toddy label with turned handle. London. By JG. *Est. £60 - £80.*

90. A Continental serving spoon, the bowl decorated with leaves and spoons. Approx. 106 grams. *Est. £30 - £50.*

91. A silver boat shaped pierced dish inset with coins. Chester. By GN&RH. Approx. 250 grams. Est. £80 - £120.

92. An unusual card case with fitted interior and textured body. London. By Sampson Mordan & Co. Est. £50 - £80.

93. IRISH: A large trophy cup on tapering base with Celtic banding. Dublin. By M&V. Approx. 936 grams. Est. £450 - £550.

94. A small Georgian OE sauce ladle with pierced bowl. Approx. 46 grams. Est. £25 - £35.

95. A small pierced sifter spoon with embossed bowl. Birmingham. By L&S. Est. £20 - £30.

96. A Chinese silver tapering mug with reeded base and glass inset. Approx. 13 cms high. Est. £400 - £500.

97. A good quality silver Georgian jug with bright cut decoration, tapering body and hinged thumb piece. London 1790. By Thomas Whipham. Est. £700 - £900.

98. A rare silver George III double quart tankard, with domed hinged cover, pierced and scroll thumb piece, scroll handle with shield shaped cartouche and tapering sides on reeded pedestal base. The front bears the crest of Humphrey Mackworth Praed who was MP for Trevethoe near St. Ives from 1761 to 1768. Approx. 23 cms high. London 1760. By Thomas Whipham and Charles Wright. (Marked to lid and body). Est. £10,000 - £15,000.

99. An early Georgian lidded tankard with dome top, scroll thumb piece with tapering body to pedestal base, crested to front and inscribed to base: "The Gift of W. Petters to his Grand-daughter Grace Petters, the

Daughter of Robert Petters." London 1732. By Sarah Parr. (Hallmarked to lid, body and handle). Est. £2500 - £3000.

101. A 9 carat circular link watch Albert together with bar. Approx. 16.5 grams. Est. £120 - £150.

102. A 9 carat curb link gate bracelet with heart shaped padlock. Approx. 21 grams. Est. £150 - £200.

103. Two 9 carat bangles with engine turned decoration. Approx. 7.5 grams. Est. £50 - £80.

104. A silver locket with horseshoe decoration on rope twist chain. Approx. 82 grams. Est. £40 - £60.

105. A pair of unusual carved jade pendant earrings mounted with emeralds and rose diamonds set in gold. Est. £250 - £300.

106. An attractive oval sapphire and diamond cluster ring in white gold claw mount. Est. £500 - £800.

107. A pair of pearl and rose diamond cluster earrings with loop top and gold mounts. Est. £150 - £200.

108. An attractive Georgian style garnet and diamond cluster ring in rose gold mount. Est. £150 - £200.

109. A Georgian style amethyst and rose diamond cluster ring with scroll decoration and rose gold. Est. £150 - £250.

110. A collection of silver and amethyst jewellery. Approx. 28 grams. Est. £20 - £30.

111. A pair of small garnet teardrop earrings on fine link chains. Est. £20 - £30.

112. A small gold compass together with a charm etc. Approx. 17 grams. Est. £50 - £80.

113. A 14 carat crescent brooch mounted with a Canadian maple leaf. Approx. 7 grams. Est. £100 - £150.

114. An 18 carat fancy link bracelet with ring clasp. Approx. 14.1 grams. Est. £400 - £500.

115. A small gold extending pencil together with a watch key. Approx. 6.2 grams. Est. £20 - £30.

116. An unusual Antique coral stick pin in the form of a dog with ruby eyes. Approx. 6 grams. Est. £400 - £450.

117. A high carat oval locket with hair centre together with an agate example. Approx. 13.1 grams. Est. £60 - £80.

118. A small modern diamond boat shaped cluster ring in two-colour gold mount. Approx. 3 grams. Est. £40 - £60.

119. A large 18 carat circular sapphire and diamond cluster ring in claw mount. Est. £350 - £400.

120. A platinum oval cluster ring with pierced decoration. Approx. 4.3 grams. Est. £350 - £450.

121. A good Antique diamond heart shaped pendant with locket back on three colour gold chain. Approx. 13.3 grams. Est. £600 - £800.

122. A 9 carat cameo pendant on fine link chain. Approx. 7.6 grams. Est. £80 - £120.

123. A 14 carat ball decorated pendant with ring clasp. Approx. 4.2 grams. Est. £50 - £80.

124. A modern 9 carat mesh bracelet with ring clasp. Approx. 5 grams. Est. £50 - £80.

125. A cased set of four lapis studs of textured design. Approx. 9 grams. Est. £100 - £150.

126. An attractive circular diamond cluster ring in platinum claw mount with pierced decoration. Est. £1200 - £1500.

127. An Antique coral pendant in the form of a bird with outstretched wings, pearl branch and loop top. Est. £700 - £900.

128. An Antique amethyst and diamond cross in gold claw mount with loop top. Approx. 5. cms long. Est. £700 - £900.

129. An Antique circular cameo pendant with loop top and leaf decorated frame. Approx. 3.8 grams. Est. £80 - £120.

130. A large Antique graduated string of coral beads of circular form with ring clasp. Approx. 77 grams. Est. £500 - £800.

131. An oval miniature of a mountain scene in pierced frame. Est. £20 - £30.

132. A pair of Edwardian silver earrings with ball decoration. Est. £20 - £30.

133. A small gold pendant with ribbon decoration on fine link chain. Approx. 8 grams. Est. £50 - £80.

134. A 9 carat modern diamond cluster ring. Approx. 2.6 grams. Est. £30 - £50.

135. A pair of large diamond and sapphire earrings in the form of clusters with loop tops and claw mounts. Approx. 6 grams. Est. £800 - £1200.

136. An attractive rose diamond and pearl necklace on gold fine link chain with ring clasp. Approx. 7.7 grams. Est. £400 - £500.

137. An Antique pearl and diamond cluster ring with leaf decoration. Approx. 2.5 grams. Est. £200 - £300.

138. A good graduated string of circular opal beads with barrel clasp. Approx. 12.8 grams. Est. £350 - £400.

139. An 18 carat 9 stone half eternity ring in collet mount. Approx. 3 grams. Est. £350 - £450.

140. A stylish sapphire and diamond cluster ring in claw mount with cut corners and pierced decoration. Approx. 3.3 grams. Est. £500 - £800.

141. CARTIER: A large wide 18 carat band. Numbered CJ9772. Signed "Cartier" to interior. Finger size N. Approx. 16.8 grams. Est. £800 - £1000.

142. A good quality sapphire and diamond line bracelet with gold concealed clasp. Est. £600 - £800.

143. A pair of 9 carat and MOP cufflinks with pearl inset in rose gold. Est. £80 - £120.

144. An unusual silver and enamelled pocket knife in the form of a Sphinx. Est. £50 - £80.

145. An unusual circular silver medal inscribed "1854", with loop top. Est. £60 - £80.

146. An 18 carat white gold cluster ring. Est. £200 - £300.

147. An 18 carat emerald and diamond three stone ring in two-colour claw mount. Est. £150 - £200.

148. A large opal single stone ring in 9 carat rubover mount. Approx. 4.2 grams. Est. £150 - £200.

149. A large coral mounted college ring with lapis centre. Approx. 10 grams. Est. £100 - £150.

150. A pair of cut steel buttons. Est. £20 - £30.

151. A tortoiseshell jewellery box with hinged top. Est. £200 - £300.

152. A good quality opal and diamond pendant in the form of a cluster with loop top and fine link chain. Est. £300 - £400.

153. A heavy 18 carat garnet three stone ring with rubover mount. Approx. 13.2 grams. Est. £400 - £600.

154. A good diamond and sapphire brooch in the form of a bow with pierced decoration. Approx. 5.5 cms long. Est. £300 - £400.

155. A large silver gilt clip in the form of a butterfly with stone inset body and crystal front. Approx. 11 cms long. Est. £700 - £800.

156. A large diamond circular daisy head cluster ring in claw mount with two-colour gold. Est. £1500 - £2000.

157. A pair of oval emerald and diamond cluster earrings contained within a fitted box. Est. £400 - £500.

158. A pair of stylish red enamelled cufflinks with chain decoration contained within a box. Est. £300 - £350.

159. A small gold seal with loop top on fine link chain. Approx. 6.4 grams. Est. £30 - £50.

160. An Antique emerald and pearl ring. (Broken shank). Est. £20 - £30.

161. An 18 carat ruby and diamond cluster ring. Approx. 2.9 grams. Est. £50 - £80.

162. An 18 carat white gold single stone ring in claw mount. Approx. 2 grams. Est. £50 - £80.

163. A good quality 14 carat brooch in the form of a riding crop with fox head and ruby eyes. Approx. 8.5 grams. Est. £200 - £300.

164. A good diamond four row ring. Approx. 4.9 grams. Est. £50 - £80.

165. A large yellow sapphire drop pendant in high carat frame with loop top and claw mount. Approx. 6.5 grams. Est. £500 - £800.

166. An attractive sapphire and diamond oval cluster ring in 18 carat claw mount. Est. £500 - £600.

167. A large rose diamond full eternity ring in 18 carat mount. Finger size M. Est. £550 - £650.

168. A good jade oval signet ring, the mount engraved with flowers and leaves. Approx. 5.3 grams. Est. £500 - £800.

169. An unusual Russian amethyst pendant, the leaves with reeded decoration. Est. £600 - £800.

170. A good quality brooch in the form of a dragonfly with emerald body, diamond eyes and outstretched wings. Approx. 5.5 cms across. Est. £250 - £350.

171. A good square old cut diamond brooch with large central stones, the body pierced with flowers and leaves. Est. £2000 - £3000.

172. An attractive aquamarine and pearl three stone drop pendant on fine link chain. Est. £200 - £300.

173. A collection of old commemorative coins. Est. £30 - £50.

174. A large ruby and diamond marquise shaped ring in claw mount. Approx. 3.5 cms long. Est. £350 - £450.

175. A good seven stone diamond half eternity ring in heavy platinum setting. (Diamond weight approx. 1 carat). Est. £1000 - £1500.

176. An Antique silver and paste necklace with ribbon decoration and ring clasp. Est. £100 - £150.

177. A Georgian silver backed pendant with large central pearl and bow top. Est. £400 - £500.

178. A good quality silver locket together with matching collar and loop top. Est. £200 - £250.

179. A pair of small daisy head cluster earrings in rubover mount. Est. £700 - £900.

180. An attractive French cluster ring in platinum with reeded band. Est. £1000 - £1500.

181. A diamond marquise single stone ring with sapphire surround to platinum band. Est. £1200 - £1500.

182. A stick pin in the form of a horse's hoof with gold shoe. Est. £60 - £80.

183. An amethyst nine stone drop pendant on gold chain. Est. £100 - £150.

184. A large aquamarine and diamond single stone pendant in claw mount with loop top. Approx. 4 cms long. Est. £800 - £1200.

185. A good diamond five stone half hoop ring in 18 carat scroll decorated mount. Est. £450 - £550.

186. An attractive diamond and sapphire three stone ring in 18 carat white gold claw mount. *Est. £500 - £600.*

187. BOGGLE: A good diamond nine stone ring of typical design. Approx. 9.1 grams. *Est. £1200 - £1500.*

188. A stylish opal cluster ring in high carat mount. *Est. £1200 - £1500.*

189. A sapphire and diamond cluster ring in claw mount. *Est. £150 - £200.*

190. A large rectangular emerald and diamond cluster ring with rubover mount and cut corners. *Est. £500 - £800.*

191. An opal and topaz cluster ring in two colour claw mount. *Est. £150 - £200.*

192. An aquamarine, pearl and rose diamond cluster ring, the mount decorated with flowers and leaves. *Est. £150 - £200.*

193. An emerald and diamond square cluster ring in 18 carat white gold mount. *Est. £500 - £600.*

194. A pair of rose diamond and pearl drop earrings with scroll decoration and ribbon tops. *Est. £200 - £300.*

195. A pair of pearl and diamond six stone cocktail earrings in white gold mount. *Est. £350 - £450.*

196. A high carat gold Oriental ten panel bracelet with concealed clasp. *Est. £600 - £800.*

197. A heavy diamond mounted necklace with barrel clasp and rope twist mount. Approx. 18.6 grams. *Est. £450 - £550.*

198. A silver and amber necklace with thirteen panels and concealed clasp. Approx. 96 grams. *Est. £600 - £800.*

199. A French platinum bow brooch with floral mounts. Approx. 6 grams. *Est. £350 - £400.*

200. A 15 carat Victorian half pearl hinged bracelet together with safety chain and floral mounts. Approx. 16.7 grams. *Est. £650 - £750.*

201. A large Victorian platinum ring attractively decorated with piercework surrounding large oval aquamarine. Approx. 4 cms long. *Est. £2000 - £2500.*

202. A diamond five stone half hoop ring decorated with flowers and leaves. Approx. 4.1 grams. *Est. £700 - £900.*

203. A good diamond three stone ring of typical design in claw mount and two-colour gold. *Est. £350 - £450.*

204. A heavy high carat gold long rope twist neck chain with barrel clasp. Approx. 35 grams. *Est. £1400 - £1600.*

205. A good quality 9 carat gate bracelet with padlock clasp. Approx. 17.6 grams. *Est. £400 - £450.*

206. An Antique emerald, ruby and diamond brooch in the form of a vase of flowers with matching drop. *Est. £700 - £1000.*

207. An attractive diamond 29 stone bracelet with rubover mounts to concealed clasp in platinum. *Est. £3000 - £3500.*

208. An unusual brooch in the form of a branch mounted with three birds paved with diamonds. *Est. £800 - £1200.*

209. Two ladies' gold wristwatches. *Est. £60 - £80.*

210. A lady's gold nurse's watch mounted with diamonds. Approx. 13 grams. Est. £250 - £300.

211. A good quality lady's platinum and diamond cocktail watch with silvered dial and 9 carat mesh strap. Approx. 15 grams. Est. £180 - £220.

212. A small diamond cocktail watch with silvered dial on velvet strap. Est. £50 - £80.

213. CARTIER: An 18 carat lady's wristwatch with concealed clasp and sapphire winder. Est. £2000 - £2500.

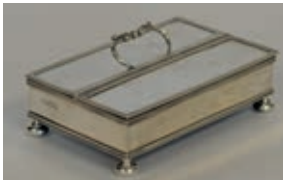
214. A gent's silver Half Hunter pocket watch with white enamel dial. Est. £100 - £150.

215. A gent's silver Half Hunter wristwatch with white enamel dial. Est. £100 - £150.

216. BREITLING: A gent's Navitimer with gold bezel and multi-dials on brown leather strap, contained within a fitted box. Est. £1800 - £2200.

217. VACHERON CONSTANTIN: A gent's slim 18 carat gold wristwatch with cream dial, date aperture and diamond numerals, contained within a fitted box together with two packs of playing cards, a pen and a notepad. Est. £3000 - £3500.

THERE WILL NOW BE A 10 MINUTE BREAK.



I



25



45



II



26



46



21



41



54



55



84



102



56



86



106



57



93



107



60



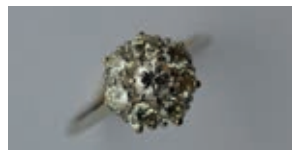
96



120



99 & 98



126



127



136



172



128



152



181



165



188



130



170



211



171



217

TOYS, COLLECTABLES AND WORKS OF ART

241. MECCANO: 395 Parts for All-Action Models No. 5 in a box. *Est. £30 - £50.*

242. Boxes containing old Hornby wagons and trains. *Est. £30 - £50.*

243. A box containing Hornby railway track. *Est. £20 - £30.*

244. An old case containing Hornby railtrack and coaches. *Est. £50 - £80.*

245. A box containing Corgi cars including James Bond examples. *Est. £20 - £30.*

246. A box containing 15 boxed Corgi Hotwheels and other cars. *Est. £30 - £50.*

247. A cased Corgi Circus set. *Est. £20 - £30.*

248. Hornby railway carriages together with track. *Est. £20 - £30.*

249. MECCANO: A Power Tool together with magazines and parts. *Est. £20 - £30.*

250. MECCANO: A set of 9 Meccano Magazine books. *Est. £20 - £30.*

251. Old Die-cast train mounts and wagons. *Est. £30 - £40.*

252. Two trays of farmyard animals. *Est. £20 - £30.*

253. A Subbuteo table Soccer set in original box. *Est. £20 - £30.*

254. An unusual Astra novelty gun. *Est. £20 - £30.*

255. An unusual boxed Build With Castos construction set in box. *Est. £30 - £40.*

256. DINKY: A box containing mechanical and other army wagons. *Est. £30 - £40.*

257. A box containing old Pullman tram wagons and carriages. *Est. £20 - £30.*

258. A box containing various rolling stock, carriages etc. *Est. £20 - £30.*

259. A box containing lead figures and farmyard animals. *Est. £30 - £50.*

260. MECCANO: 275 Parts For Working Fun No 4. set in box. *Est. £30 - £50.*

261. A James Bond Collector's set. *Est. £15 - £20.*

262. An old army gun together with tanks etc. *Est. £15 - £20.*

263. A collection of Pullman's rolling stock. *Est. £30 - £40.*

264. A box containing old railway houses, stations etc., together with one other box similar. *Est. £30 - £50.*

265. MECCANO: Five boxed Engineering sets. *Est. £40 - £60.*

266. MECCANO: A box containing springs. *Est. £30 - £40.*

267. MECCANO: A box containing a large volume of mixed items. *Est. £30 - £40.*

268. A box containing Corgi and other boxed cars. *Est. £30 - £40.*

269. A box containing a DINKY 451 Johnston Road Sweeper etc. *Est. £30 - £40.*

270. A box containing a Corgi Renault 11 car together with three old Police cars. *Est. £20 - £30.*

271. A box containing Corgi school buses, AA van etc. *Est. £20 - £30.*

272. A quantity of die-cast farm machinery together with five Corgi Batmobiles. *Est. £30 - £50.*

273. A box containing DVD boxed sets by Kiefer Sutherland. . *Est. £20 - £30.*

274. MECCANO: A large 136 Working Models set contained within a box. *Est. £30 - £50.*

275. A large three storey doll's house completely furnished to interior with grey slate effect roof. *Est. £100 - £150.*

276. An attractive doll's house in the form of a quaint cottage, fully fitted. *Est. £100 - £150.*

277. A box containing a Dinky race car, bus etc. *Est. £20 - £30.*

301. AFTER BIRKET FOSTER: A young girl feeding birds outside a cottage. Approx. 19 cms x 17 cms. *Est. £200 - £250.*

302. A pair of Japanese lakeside scenes with boats. Impressed to sides. Approx. 47 cms x 14 cms. *Est. £30 - £50.*

303. WILLIAM ROTHENSTEIN: A portrait of Mrs Rothenstein with baby at bathtime. Approx. 24 cms x 19 cms. *Est. £500 - £800.*

304. A large oak framed wallpaper picture with Oriental background. Approx. 27 cms x 84 cms. *Est. £30 - £50.*

305. A maple framed oil on canvas of a stallion in gilt border. Approx. 49 cms x 39 cms. Apparently unsigned. *Est. £80 - £100.*

306. An oil on canvas of a hound in a stable block in seated position. Approx. 59 cms x 29 cms. *Est. £100 - £150.*

307. "NOBBIE" CLARK R O: Warships in rough seas. Watercolour in gilt frame. Approx. 47 cms x 19 cms. *Est. £20 - £30.*

308. Portrait of a young girl with red ribbon in her hair. Oil on canvas. Approx. 47 cms x 56 cms. *Est. £30 - £50.*

309. A Surrey garden dated 1958 in gilt frame. Approx. 26 cms x 19 cms. *Est. £50 - £80.*

310. A BERT: A pair of framed and glazed sheep scenes in gilt frames. Approx. 24 cms x 12 cms. *Est. £50 - £80.*

311. J KNOWLES: A pair of still life watercolours of flowers. Approx. 50 cms x 26 cms. *Est. £40 - £60.*

312. ARTHUR HENRY KNIGHTON HAMMOND: A flowing picture of cattle in field with blue sky. Approx. 54 cms x 77 cms. *Est. £150 - £200.*

313. RUSSELL FLINT: A framed and glazed print of semi-naked ladies. Numbered 465 / 850. Approx. 66 cms x 48 cms. *Est. £50 - £80.*

314. A girl with red hat and wavy hair in distressed state. Oil on canvas in gilt frame. Approx. 58 cms x 48 cms. *Est. £40 - £60.*

315. A portrait of a cleric with quill at his desk. Oil on canvas. Approx. 21 cms x 24 cms. *Est. £120 - £160.*

316. R D SHERRIN: A framed and glazed watercolour of Shep Tor. Approx. 39 cms x 16 cms. *Est. £30 - £50.*

317. R D SHERRIN: A framed and glazed watercolour of Bone Hill Rocks near Widdacombe. Approx. 39 cms x 17 cms. Est. £40 - £60.

318. R D SHERRIN: A framed and glazed watercolour of a rugged moorland scene in the mist. Approx. 53 cms x 24 cms. Est. £60 - £80.

319. R D SHERRIN: A framed and glazed watercolour of a rugged moorland scene with interlocking spurs. Approx. 52 cms x 37 cms. Est. £60 - £80.

320. An Oriental framed and glazed textile picture. Signed to top right. Approx. 80 cms x 32 cms. Est. £30 - £50.

321. WILLIAM SCOTT: A framed and glazed print. Approx. 53 cms x 29 cms. Est. £30 - £50.

322. WILLIAM SCOTT: A framed and glazed print. Approx. 54 cms x 69 cms. Est. £30 - £50.

323. M. BYRNE: A framed and glazed signed print. A study in green and red. Approx. 30 cms x 30 cms. Est. £20 - £30.

324. PIETRO PRATO: A modernistic limited edition signed print in blue and green. Numbered 35/50. Approx. 50 cms x 50 cms. Est. £20 - £30.

325. GRAHAM HORTON: A signed proof 1966. "Dial Set Two". Approx. 50 x 50 cms. Est. £20 - £30.

326. BOB CROSSLEY: A signed print dated 1969. Geometric patterns with purple squares and green circles. Approx. 54 cms x 46 cms. Est. £30 - £50.

327. Two modern framed and glazed prints. Approx. 27 cms x 27 cms each. Est. £20 - £30.

328. KURT MÜHLENHAUPT : A pair of portraits entitled "Vor Dem Spiegel", (In Front of the Mirror). Framed and glazed together. One numbered 2/119. Both signed and inscribed. Approx. 89 cms x 61 cms. Est. £30 - £50.

329. KURT MÜHLENHAUPT : An original pencil and wash portrait of the artist and his wife, naked "Mit Spiegel in holz" (With a wooden mirror.) Approx. 48 cms x 38 cms. Framed in white painted frame. Est. £80 - £100.

330. KURT MÜHLENHAUPT: A pair of framed and glazed signed landscape prints. Numbered 9/100 and 60/100. Approx. 37 cms x 29 cms each. Est. £30 - £50.

331. KURT MÜHLENHAUPT: A framed and glazed duo of prints entitled Christ and Mary respectively. The larger numbered 3/25 in a series of 2. Approx. 29 cms x 33 cms and 17.5 cms x 17 cms. Est. £30 - £50.

332. KURT MÜHLENHAUPT A framed and glazed watercolour of a man and a lady. Unsigned. Possibly MÜHLENHAUPT. The frame is glazed verso to display reverse. Approx. 39 cms x 30 cms. Est. £30 - £50.

333. KURT MÜHLENHAUPT : A framed and glazed pencil and watercolour of two aging gentleman. Signed "M 93". Approx. 38 cms x 48 cms. Est. £30 - £50.

334. KURT MÜHLENHAUPT: A framed and glazed print depicting chickens on a farm. Approx. 22 cms x 32 cms. Est. £20 - £30.

335. KURT MÜHLENHAUPT: Two signed books. Est. £20 - £30.

336. J HARDY: A pair of coastal scenes with boats and figures. Approx. 14 cms x 39 cms. Est. £40 - £60.

337. HENRY R WILKINSON ARCA: A river scene of Yewdale Beck, Coniston. Framed and glazed. Approx. 53 cms x 37 cms. Est. £50 - £80.

338. H WYLIE: Fishing boats at sea. Approx. 21 cms x 16 cms. (Badly stained). Est. £40 - £60.

339. POLI: Two signed and dated pencil caricatures. Both entitled "G", (Gerald Tapp), and drawn at Gleneagles. Est. £30 - £50.

340. J DE CAZANEVE: A pair of oval portraits of a 19th Century gentleman and a 19th Century lady in gilt frames. Approx. 44 cms x 34 cms. Est. £50 - £80.

341. A pair of large black and white prints entitled "The Day of Reckoning". Approx. 72 cms x 48 cms. Est. £20 - £30.

342. "On The Thames": Oil on canvas with trees and figures. Approx. 74 cms x 63 cms. Est. £50 - £80.

343. CUISANK: A large decorative oil painting of figures on horseback with dogs. Approx. 72 cms x 99 cms. Est. £100 - £150.

344. ARTHUR HENRY KNIGHTON HAMMOND: Shire horses under a tree on grassland. Approx. 54 cms x 77 cms. Est. £150 - £200.

345. A 19th Century oil painting of a wooded pathway and cottage in gilt frame. Approx. 66 cms x 52 cms. Est. £100 - £150.

346. An oil on canvas depicting fishing boats at low tide with rocky landscape to background. Approx. 60 cms x 30 cms. Est. £50 - £80.

347. A 19th Century oil on canvas depicting fishing boats on moorings in gilt frame. Approx. 59 cms x 44 cms. Est. £80 - £120.

348. A gilt framed mezzotint of figures under a tree. Approx. 51 cms x 48 cms. Est. £40 - £60.

349. An unframed portrait of a young child with white ruff. Oil on canvas. Approx. 71 cms x 62 cms. Est. £30 - £50.

350. G I FRANKLIN: An oil on canvas depicting a river scene with overhanging trees. Approx. 59 cms x 29 cms. Est. £100 - £150.

351. A small gilt framed mirror inset with two oval sailing scenes. Approx. 75 cms x 34 cms. Est. £20 - £30.

352. GREGORY ROBINSON: A pair of watercolours depicting galleons in rough seas. Approx. 26 cms x 18 cms each. Est. £30 - £50.

353. F GIESELGE: A pair of small rectangular seascapes depicting sailing boats. Approx. 19 cms x 9.5 cms. Est. £60 - £80.

354. An oil on canvas depicting still life with flowers in a vase, in a gilt frame. Approx. 49 cms x 39 cms. Est. £50 - £80.

355. A large portrait of a lady with pearl necklace in gilt frame. Approx. 75 cms x 61 cms. Est. £100 - £150.

356. A large 19th Century oil on canvas depicting cattle beneath trees on a river bank, in gilt frame. Approx. 76 cms x 63 cms. Est. £150 - £200.

357. A 19th Century oil on board depicting figures by a stream in ornate gilt frame. Unsigned. Approx. 19 cms x 16 cms. Est. £150 - £200.

358. LOUISE DE GAUVAIN: An unframed watercolour of a woodland scene. Approx. 44 cms x 34 cms. Est. £100 - £120.

359. Oil on canvas depicting horses and figures in embossed frame. Approx. 53 cms x 41 cms. *Est. £40 - £60.*

360. PAUL KARSLAKE: An artichoke on platter. Oil on canvas in black frame. Approx. 147 cms x 155 cms. *Est. £300 - £500.*

361. A woodland walk scene depicting two figures and cottage. Unsigned. Oil. Approx. 49 cms x 28 cms. *Est. £80 - £120.*

362. A framed and glazed sampler of typical design dated 1874. Approx. 43 cms x 29 cms. *Est. £40 - £60.*

363. J C WREN: Fishermen on cliff side with rough seas. Approx. 33 cms x 23 cms. *Est. £30 - £50.*

364. Fishing boats off pierhead in rough seas. Oil on board. Approx. 36 cms x 24 cms. *Est. £50 - £80.*

365. JOSEPH MILL: "May Blossom". Oil on canvas. Signed and dated. Approx. 60 cms x 40 cms. *Est. £800 - £1000.*

366. LINNEL LIONEL CLARKE: Figure on boat beneath trees. Oil on canvas. Approx. 65 cms x 39 cms. *Est. £50 - £80.*

368. A framed and glazed silhouette of a gent smoking a pipe. Approx. 17 cms x 11 cms. *Est. £20 - £30.*

369. PEGGY NEWALL: A tall silhouette of a lady with overcoat. Signed and dated 1930. Approx. 32 cms x 9.5 cms. *Est. £30 - £50.*

369A. CECIL ELGEE: A pair of framed and glazed silhouettes of a Naval officer. Signed. Approx. 16 cms x 24 cms. *Est. £40 - £60.*

369B.. Two glazed caricatures entitled "The Maiden's Prayer" and "The Bogey Man". Approx. 22 cms x 12 cms. *Est. £20 - £30.*

369C. A group of three small framed silhouettes. *Est. £20 - £30.*

369D. A framed and glazed silhouette of a couple playing music. Approx. 19 cms x 24 cms. *Est. £50 - £80.*

369E. A framed and glazed silhouette of a couple on a jaunt in a carriage with horses. Approx. 31 cms x 24 cms. *Est. £50 - £80.*

369F. A small unframed oil on board of a Cornwall harbour with boats. Approx. 10 cms x 8 cms. *Est. £20 - £30.*

370. A good pair of Antique brass candlesticks on square tapering supports. *Est. £30 - £50.*

371. Two pairs of circular brass candlesticks. *Est. £30 - £50.*

372. A pair of plated candlesticks together with a Georgian square candlestick with tapering flute. *Est. £20 - £30.*

373. An unusual Antique carved figure of a religious scene. *Est. £40 - £60.*

374. An unusual carved bracket in the form of a winged infant with textured body. *Est. £30 - £50.*

375. An unusual brass jug with turned wooden handle together with a pestle and mortar. *Est. £30 - £50.*

376. A pair of unusual Antique ivory salt and pepper pots. *Est. £20 - £30.*

377. An unusual silver knife with tooth handle and ball decoration. *Est. £30 - £50.*

378. An unusual burr walnut mantle clock with white enamelled dial. *Est. £50 - £80.*

379. An unusual railway clock numbered 1185 LNER to dial, in oak case. *Est. £250 - £300.*

380. An unusual slide viewer with dome lid together with numerous slides. *Est. £30 - £50.*

381. A good quality mahogany and brass mounted travelling writing box with fitted interior. *Est. £60 - £80.*

382. A walnut and brass mounted writing slope with fitted interior. *Est. £50 - £80.*

383. A mahogany wall clock with glass mounted inspection chamber. *Est. £50 - £80.*

384. A small ivory mounted wall plaque depicting fishermen. *Est. £30 - £50.*

385. A large handmade boxwood model of a galleon in open-topped perspex case. *Est. £50 - £80.*

386. A cased model of HMS Bellona contained within a perspex travelling case. *Est. £50 - £80.*

387. A large bronze figure of a fighting lion with snake on marble base. Marked to leg: 18/25. *Est. £1500 - £2000.*

388. An attractive set of six miniature Spode plates on stands. *Est. £20 - £30.*

389. A wavy edged cranberry glass jug with reeded handle. Approx. 25 cms high. *Est. £30 - £50.*

390. A large cranberry glass vase with fluted handles. Approx. 25 cms high. *Est. £30 - £50.*

391. A small wavy edged cranberry glass vase with swing handle. Approx. 20 cms high. *Est. £20 - £30.*

392. A brass mounted oil lamp with yellow glass shade. (Slight damage). *Est. £40 - £60.*

393. An old brass mounted oil lamp with glass reservoir and marble base. *Est. £40 - £60.*

394. A pair of unusual brass mounted oil lamps on square pedestal bases with hoof feet. *Est. £50 - £80.*

395. A pair of blue lacquer and ivory mounted plaques with wooden mounts. Approx. 39 cms x 24 cms. *Est. £40 - £60.*

396. A French mantle clock with brass face and lion mask handles. By S Marti. Numbered 3769. *Est. £200 - £250.*

397. A bronze Airedale dog in seated position with two compartments. Approx. 17 cms high. *Est. £150 - £200.*

398. A pair of cut glass spirit decanters with lift-off covers. *Est. £20 - £30.*

399. CARLTON WARE: A pair of decorative vases of Oriental design. Numbered 3199. Approx. 20 cms high. *Est. £30 - £50.*

400. A small brass carriage clock with white enamelled dial on bun feet. Approx. 11 cms high. *Est. £30 - £50.*

401. An unusual brass paperweight in the form of a figure with textured design. Approx. 17 cms high. *Est. £30 - £50.*

402. A small gilt wood bracket decorated with scrolls and leaves. Approx. 21 cms high. *Est. £20 - £30.*

403. MOORCROFT: A stylish limited edition collectors' plate in original box. Numbered 176/400. *Est. £150 - £200.*

404. MOORCROFT: A stylish tapering vase decorated with flowers and leaves. Dated to base: 26/11/2000. Approx. 16 cms high. *Est. £150 - £200.*

405. Two decorative Limoges boxes together with a bird decorated brooch. *Est. £30 - £50.*

406. A massive Spode blue and white kettle of typical design. Approx. 30 cms high. Est. £60 - £80.

407. NORMAN UNDERHILL: A pair of large pottery figures of a scarecrow and farmer. (One chipped). Est. £20 - £30.

408. WIDDECOMBE FAIR: A good set of 14 novelty figures complete with book. Est. £150 - £200.

409. A massive pottery crucifix. Approx. 61 cms high. Est. £30 - £50.

410. A Buffet flute contained within a fitted box together with a metronome and music. Est. £30 - £50.

411. POOLE: A vase together with an ironstone shaving cup. Est. £20 - £30.

412. Two blue and white Chinese vases. Marked to base. Est. £30 - £50.

413. ROYAL DOULTON: A Coniston pattern tea service. Est. £40 - £60.

414. A large pair of decorative pottery figures with floral backgrounds. Approx. 25 cms high. (Badly damaged). Est. £60 - £80. £

415. A Sub Zero electric four string guitar. Est. £40 - £50.

416. A Johnson electric six string guitar in pink. Est. £40 - £60.

417. A group of three Continental wooden candlesticks. Est. £30 - £50.

418. A small painted six drawer chest. Approx. 36 cms high. Est. £10 - £15.

419. A leather mounted desk organiser with gilded mounts. Est. £20 - £30.

420. WEMYSS: A figure of a cow in seated position of typical design. Approx. 23 cms long. (Slight damage). Est. £80 - £120.

421. STAFFORDSHIRE: A figure of a horse together with one other. Est. £20 - £30.

422. An unusual brass vase with wavy edge and rope twist decoration. Est. £50 - £80.

423. A heavy brass Japanese vase profusely decorated with dragons on pedestal base. Approx. 10 cms high. Est. £30 - £50.

424. A large ornate lead glazed lampshade decorated with flowers and leaves. Est. £80 - £120.

425. A green lustre oil lamp with lift-off reservoir and gilded decoration. Est. £30 - £50.

426. A pair of Georgian air twist glasses etched with flowers and leaves. Est. £50 - £80.

427. A massive pottery teapot attractively embossed with flowers and leaves. Approx. 32 cms high. Est. £50 - £80.

428. A group of three pottery Toby jugs. Est. £30 - £50.

429. ROYAL DOULTON: A pair of large baluster shaped vases with gilded rims. Approx. 35 cms high. Est. £50 - £80.

430. A pair of good Continental decorative figures on pedestal bases. Approx. 32 cms high. Est. £50 - £80.

431. ROYAL WORCESTER: A baluster shaped vase decorated with flowers and gilding. Numbered 2160. Approx. 20 cms high. Est. £50 - £80.

432. ROYAL WORCESTER: A blue and yellow Grafton pot pourri with lift-off cover. Numbered 846. Est. £40 - £60.

433. A large French blue gilded vase and cover. Approx. 31 cms high. Est. £30 - £50.

434. ROYAL WORCESTER: A vase with floral decoration. Numbered 1142. (Slight damage). Approx. 20 cms high. Est. £20 - £30.

435. COALPORT: A baluster shaped vase decorated with flowers and leaves. Approx. 15 cms high. Est. £30 - £50.

436. ROYAL WORCESTER: A small vase with pierced decoration and gilt border. Approx. 8 cms high. Est. £60 - £80.

437. ROYAL WORCESTER: A good set of five ewers with gilded handles. Numbered 1094. Est. £350 - £400.

438. PARAGON: A group of infants on rocky base. (Slight damage). Approx. 27 cms high. Est. £30 - £50.

439. A good pair of baluster shaped ginger jars attractively decorated with flowers and gilding. Approx. 22 cms high. Est. £250 - £300.

440. A pair of stylish plates with gilded decoration. Est. £20 - £30.

441. HARDING: A good set of pearl ware miniature dinnerware decorated with green flowers. Est. £250 - £300.

442. A group of approx. 200 various mixed postcards. Est. £20 - £30.

443. A group of approx. 150 local postcards. Est. £20 - £30.

444. A group of approx. 200 Cornish postcards. Est. £20 - £30.

445. Approx. 12 old postcards by Bragg. Est. £10 - £15.

446. A large group of old teddy bears. Est. £30 - £50.

447. An old copper and brass ship's Masthead ship's lantern. Est. £60 - £80.

448. A large copper two-handled preserve bowl. Est. £20 - £30.

449. A framed set of World War I brass shell cases displayed as a dinner gong. The shells include a French 75mm (1910) with two life guards badges, a 17th Lancer, RA, West Kents, and a German belt buckle, together with a British 18 PDR with Picklehelm badge of the Russian Guards, a German Cockade cap badge, a buckle Gottmitt and a Camerons cap badge, and finally a German 75mm (1910) shell with Life Guards, Royal Sussex, a belt buckle and a Cockade cap badge. Suspended to the wooden frame is a WWI German Butchers bayonet (1916). Est. £150 - £200.

450. An Antique Dutch wall hanging cistern together with drip tray. Est. £60 - £80.

451. An Antique bronze three legged skillet, together with a copper pan etc. Est. £30 - £50.

452. An early Cabbaset turban helmet of heavy iron construction. Est. £150 - £200.

453. An early funeral helmet with painted decoration, wall mount and pierced decoration. Est. £400 - £500.

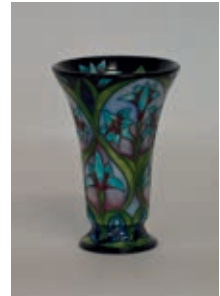
454. An unusual 15th Century style helmet with breathing holes. Est. £150 - £200.



301



357



404



315



364



407



319



369E



414



350



397



420



356



400



439

FURNITURE

501. A good stripped pine glazed two door cabinet on bun feet. *Est. £50 - £80.*

502. A good Georgian chest of three long and three short drawers on bracket feet with string inlay. *Est. £100 - £150.*

503. A large mahogany four door break front bookcase on pedestal base with panelled doors. *Est. £250 - £300.*

504. A painted pine triple wardrobe with cupboard to base, panelled doors and arched top. *Est. £150 - £200.*

505. A Georgian oak panelled coffer of typical design with hinged top. *Est. £100 - £150.*

506. A massive Antique oak refectory table with stretcher base and turned supports. Approx. 215 cms x 87 cms. *Est. £150 - £200.*

507. A mahogany chest of five drawers with panelled top on bracket feet. *Est. £30 - £50.*

508. An Edwardian American rocking chair with carved decoration. *Est. £40 - £60.*

509. A mahogany corner commode with dummy drawers on stretcher base. *Est. £30 - £50.*

510. A massive oak twin pedestal partner's desk with drawers and cupboards. Approx. 118 cms x 158 cms. *Est. £100 - £150.*

511. An elm stick back carver chair on turned supports. *Est. £30 - £50.*

512. A carved hall chair with cane seat. *Est. £30 - £50.*

513. An Antique oak cane seated carver chair. *Est. £30 - £50.*

514. A pair of mahogany eight door sectional stacking bookcases. *Est. £40 - £60.*

515. A large mahogany chest of three long and two short drawers with brass handles. *Est. £30 - £50.*

516. A good carved hall stand in the form of a bear on matching base. Approx. 72 cms high. *Est. £100 - £150.*

517. A Continental mahogany mirrored door wardrobe with drawer to base. Approx. 2.4 m high. *Est. £100 - £150.*

518. An Antique oak hinged top mule chest with drawers to base and brass handle. *Est. £100 - £150.*

519. A mahogany single pedestal loo table with turned decoration. *Est. £50 - £80.*

520. A good Edwardian inlaid serpentine fronted display cabinet with two drawers and mirrored plate. *Est. £200 - £300.*

521. A Georgian mahogany two lap table with turned supports. *Est. £30 - £50.*

522. An etched glass mirror with floral cornice. Approx. 90 cms high. (Slight damage). *Est. £50 - £80.*

523. An unusual green painted overmantle mirror with reeded sides. Approx. 107 cms long. *Est. £30 - £50.*

524. A small square gilt framed circular mirror. *Est. £30 - £50.*

525. A massive oak extending table with reeded legs together with two leaves and winder. Approx. 3.1 m in length fully extended. *Est. £200 - £250.*

526. An unusual Continental hardwood hall table with tapering supports. *Est. £150 - £200.*

527. A Georgian walnut chest of three long and two short drawers with pierced handles to bracket feet. *Est. £300 - £500.*

528. A set of three mahogany hoop back dining chairs with scroll decoration. *Est. £100 - £150.*

529. A stripped pine single door cupboard with marble top. *Est. £20 - £30.*

530. A good Continental bow front chest with wavy edge and pierced handles. *Est. £200 - £250.*

531. A set of four Continental painted Queen Anne style dining chairs with slip-in seats. *Est. £30 - £50.*

532. An unusual mahogany military chest with inset handles to pedestal base. *Est. £100 - £150.*

533. A Continental painted tea trolley attractively decorated with scrolls and leaves. *Est. £30 - £50.*

534. A mahogany drop leaf table on slender turned supports. *Est. £30 - £50.*

535. A good oak carved coffin stool. *Est. £30 - £50.*

536. A Continental upholstered hall chair with reeded arms and floral back. *Est. £40 - £60.*

537. An Antique Continental single drawer hall table. *Est. £50 - £80/*

538. A massive stripped pine chest of three long and two short drawers with pedestal base and pierced handles. *Est. £80 - £120.*

539. A Victorian rosewood piano stool on pedestal base. *Est. £30 - £50.*

540. A mahogany hinged top games table with reeded supports. *Est. £100 - £150.*

541. An Georgian three drawer dresser base with Tunbridge decoration and pierced brass handles. Approx. 186 cms long. *Est. £300 - £400.*

542. A Continental serpentine fronted desk with leatherette top and single drawer. *Est. £30 - £50.*

543. A Victorian mahogany twin pedestal desk with leatherette inset top. *Est. £150 - £200.*

544. A good mahogany batchelor's chest of three long and two short drawers on bracket feet with brushing slide. *Est. £450 - £550.*

545. A Georgian chest of three long and two short drawers on bracket feet. *Est. £100 - £150.*

546. A stripped pine chest of four drawers on pedestal base with brass handles. *Est. £50 - £80.*

547. A mahogany hinged topped games table with tapering supports. *Est. £50 - £80.*

548. A mahogany single pedestal dining table with scroll decoration. *Est. £50 - £80.*

549. A single pedestal dining table with fluted column and reeded supports. *Est. £50 - £80.*

550. A late Victorian button back armchair with floral tapestry upholstery. *Est. £100 - £150.*

551. A large mahogany tallboy consisting of six long and two short drawers with brass handles, bracket feet. and dental frieze. Approx. 180 cms high. *Est. £400 - £500.*

552. A good cane backed mahogany rocking chair. Est. £60 - £80.

553. A large pine two part corner cabinet on bracket feet. Est. £50 - £80.

554. A red lacquer hinged top trunk on stand with gilt decoration. Est. £40 - £60.

555. A Georgian mahogany tallboy with six long and two short drawers on bracket feet. Est. £300 - £400.

556. An unusual Moroccan painted refectory table profusely decorated in flowers and leaves on gilded base. Approx. 190 cms long. Est. £150 - £200.

557. A good large mahogany partner's desk with drawers to either side and leather inset on pedestal base. Approx. 107 cms x 150 cms. Est. £300 - £400.

558. A Georgian mahogany bureau of typical design with fitted interior on bracket feet. Est. £80 - £120.

559. A rosewood hall table on turned support. Est. £80 - £120.

560. A large mahogany bow front chest of three long and two short drawers. Est. £60 - £80.

561. N S U QUICKLY: A moped in sage green with white wheels and leather seat. Est. £500 - £700.

562. A small stripped pine two door cupboard. Est. £40 - £60.

563. A Continental painted two door wardrobe with floral front. Est. £80 - £120.

564. A mahogany Georgian style armchair with scroll legs. Est. £50 - £80.

565. A good Antique gilt mirror with three candle sconce, panelled sides and urn finial. Est. £150 - £200.

566. A good wrought iron painted planter. Est. £150 - £200.

567. A child's rocking horse on wooden rocking pedestal base. Est. £80 - £120.

568. A large framed and glazed tapestry of an Oriental scene. Est. £40 - £60.

569. An oak cased grandfather clock. By John Pengelly of Barnstaple. Est. £80 - £120.

570. An oak cased grandfather clock with painted dial and floral decoration. Est. £60 - £80.

571. A large oak cased grandfather clock, the dial attractively decorated with flowers and urns. By Stonehouse Walcrest. Est. £100 - £150.

572. A large tall mahogany grandfather clock with painted dial decorated with love birds. Est. £100 - £150.

573. A good Georgian oak cased grandfather clock, the brass dial decorated with figures. By Sam Wright. Est. £250 - £350.

574. A mahogany tapestry frame on turned support. Est. £30 - £50.

575. An RAF Officer's mess kit, to include a Group Captain rank with pilot's wings jacket, waistcoat and trousers; a dinner jacket and trousers; an RAF Officer's No 1 uniform to include a Group Captain rank with pilot's wings jacket and trousers; and an RAF Officer's Service Dress Group Captain rank hat. Est. £100 - £150.

576. A Royal Marines Sargeant's Parade Dress Uniform with a Small Arms badge sewn onto it, complete with a Parade Dress hat and white belt. *Est. £40 - £60.*

577. A finely carved soapstone spill vase. *Est. £30 - £50.*

578. An Oriental cloisonné bowl decorated with figures. Approx. 15 cms in diameter. *Est. £20 - £30.*

579. An Aynsley floral decorated tea service. *Est. £20 - £30.*

580. A collection of five decorative figures. *Est. £30 - £50.*

581. A large alabaster figure of a peregrine falcon on rugged base. *Est. £30 - £50.*

582. A large Oriental mug decorated with houses and trees. *Est. £50 - £80.*

583. An oak carved wall barometer with silvered dial. *Est. £30 - £50.*

584. A pair of EPNS wine coasters. *Est. £30 - £40.*

585. A pair of EPNS candlesticks with fluted design. *Est. £30 - £40.*

586. A decorative Ironstone part dessert service decorated with flowers and leaves.

587. A good Georgian serpentine chest of four drawers with brushing slide on bracket feet. *Est. £100 - £150.*

588. A Georgian mahogany chest of five drawers on bracket feet. *Est. £60 - £80.*

589. A mahogany bow front two drawer side table on tapering supports. *Est. £30 - £50.*

590. An Edwardian rosewood table with tapering supports. *Est. £40 - £60.*

591. A hinged top pitch pine trunk. *Est. £30 - £50.*

592. A small shield-back mirror with three drawers. *Est. £20 - £30.*

593. An Edwardian mahogany single door corner wardrobe. *Est. £40 - £60.*

594. An oak carved two door cupboard. *Est. £50 - £80.*

595. A mahogany five drawer chest on pedestal base with bun feet. *Est. £60 - £80.*

596. A reproduction Georgian style chest of three long and two short drawers. *Est. £60 - £80.*

597. An Edwardian two door cabinet on cabriole legs and cross banding. *Est. £60 - £80.*

598. A Georgian style wall mirror in mahogany frame. *Est. £20 - £30.*

599. An Edwardian lead glazed cupboard with mirrored plate. *Est. £30 - £50.*

600. A mahogany bench on turned supports. *Est. £20 - £30.*

THERE WILL NOW BE A 10 MINUTE
BREAK



VINTAGE WINES & SPIRITS

NB: BIDS FOR ALCOHOL WILL ONLY BE ACCEPTED FROM ANYONE OVER THE AGE OF 18. PHOTOGRAPHIC PROOF OF AGE REQUIRED BEFORE ITEMS RELEASED TO PURCHASER.

ALL BOTTLES ARE BEING SOLD AS SEEN, AND NO RESPONSIBILITY WILL BE ACCEPTED FOR CORKAGE OR OTHER DEFECTS.

The following wines are being sold on behalf of Mr David Cook, an avid wine collector from Topsham. All are being sold without reserve.

601. A case of 12 x 750ml bottles of Château la Clarière Laithwaite 2010.

602. 6 x 750ml bottles of Roche Lacour 2014 Brut.

603. 5 x 750ml bottles of Domaine Malet Touraine Sauvignon 2014.

604. 5 x 750ml bottles of Laithwaite Semillon Oak Fermented Bordeaux 2005.

605. 4 x 750ml bottles of Château Les Hauts De Pontet Pauillac 1996.

606. 2 x 750ml bottles of Beaune 1er Cru Domaine de Saux 1999 together with 2 x 750ml bottles of Domaine Paillère & Pied-Gû Gigondas 2010.

607. 3 x 750ml bottles of Roche Lacour 2013 Brut; 2 x 750ml bottles of Roche Lacour 2014 Brut and 1 x 750ml bottle of Roche Lacour 2015 Brut.

608. 4 x 750ml bottles of Laithwaite Semillon Oak Fermented Bordeaux 2006.

609. 1 x 750ml bottle of Château Haut-Bages Libéral Pauillac 1989.

610. 1 x 750ml bottle Château Meyney Saint-Estèphe 2009.

611. 4 x 750ml bottles Domaine Boucharey 2000 Côte-Rôtie.

612. 6 x 750ml bottles of Château la Clarière Laithwaite 2015.

613. 4 x 750ml bottles of Château Le Bourg du Cauze Saint-Emilion Grand Cru 1999.

614. 2 x 750ml bottles of Wairau River Sauvignon Blanc 2001; 2 x 750ml bottles of Sunday Bay Reserve Sauvignon Blanc 2015 and 2 x 750ml bottles of Tumbarumba Chardonnay 2002.

615. 4 x 750ml bottles of Château la Clarière Laithwaite 2015; 1 x 750ml bottles of Château la Clarière Laithwaite 2010 and 1 x 750ml bottles of Château la Clarière Laithwaite 2008.

616. 3 x 750ml Domaine Long-Depaquit Chablis Premier Cru Forêt 2003 together with 2 x 750ml bottles of Domaine Long-Depaquit Chablis Premier Cru Forêt 2008.

617. 2 x 750ml bottles of Domaine Tremblay-Bouchard Chablis 2001; 2 x 750ml bottles of Fourchaume Chablis Premier Cru 2010 and 2 x 750ml bottles of Pascal Bouchard Chablis 2000.

618. 6 x 750ml bottles of Château Grand-Puy Ducasse Pauillac 1998.

619. 2 x 750ml bottles of Côte-Rôtie 2007 and 2 x 750ml bottles of Le Grand Chai Médoc 2005.

620. 5 x 750ml bottles Clos René Pomerol 1998.

621. 2 x 750ml bottles of L'Esquive de Franc Maillet Pomerol 2004 together with 2 x 750ml bottles of Château Bourgneuf Pomerol 2006.

622. 5 x 750ml bottles of Château Grand - Pontet Grand Cru Classé Saint-Émilion Grand Cru 1998.

623. 6 x 750ml bottles of Domaine Malet Touraine Sauvignon 2014.

624. 3 x 750ml bottles of Gevrey-Chambertin 2000 together with 1 x 750ml bottle of Gevrey-Chambertin 2001.

625. 4 x 750ml bottles of Los Vascos Sauvignon Blanc Cuvée Especial 2015.

626. 5 x 750ml bottles of Château Talbot Saint-Julien Grand Cru Classé 1998.

627. 8 x 750ml bottles Laithwaite Merlot 2005.

628. 2 x 750ml bottles of Pikkara McLaren Vale Shiraz 2005, 2 x 750ml bottles of Metala Langhorne Creek Shiraz 2000, and 2 x 750ml bottles of Viottolo McLaren Vale Shiraz 2004.

629. 2 x 750ml bottles of McLaren Vale Two Hands Angels Share Shiraz 2006, 2 x 750ml bottles of Tamar Ridge Tasmania Kayena Reserve Pinot Noir 2007, and 2 x 750ml bottles of McLaren Vale Red Sedan Oak Aged Shiraz 2005.

630. 2 x 750ml bottles of Casa de Monzi Rosato Veronese 2006.

631. 3 x 750ml bottles of La Barrique de Bordeaux 2012.

632. 3 x 750ml bottles of Château Grand-Puy

Ducasse Pauillac 1993.

633. 2 x 750ml bottles of Château Larrivet-Haut-Brion 1998.

634. 1 x 750ml bottle of Carravacas Primicia Rioja 2012 together with 1 x 750 ml bottle of Carravacas Primicia Rioja 2013.

635. 2 x 750 ml bottles of Château Cantemerle Haut-Médoc 1997.

636. 2 x 750ml bottles of Vino Noble di Montepulciano 1999.

637. 2 x 750ml bottles of La Tirela Amarone Della Valpolicella Classico 2006.

638. 2 x 750ml bottles of La Grace de L'Hermitage 2007.

639. 2 x 750ml bottles of Bourgogne Hautes Côtes de Nuits 1999.

640. 2 x 750ml bottles of Château Giscours Margaux 1998.

641. 2 x 750ml bottles of Château l'Argenteyre Médoc 2003.

642. 4 x 750ml bottles of Château Bellevue Du Galvesse Lalande de Pomerol 1999.

643. 1 x 750ml bottle of G D Vajra Barbera d'Alba 2011 together with 1 x 750ml bottle of G D Vajra Langhe Nebbiolo 2012.

644. 3 x 750ml bottles of Château Gachon Montagne St-Emilion 1998.

645. 2 x 750ml bottles of Peter Lehmann The Seven Surveys Barossa Valley Grenache Shiraz mourvedre 1999.

646. 2 x 750ml bottles of Clarendon Hills Old Vines Grenache 2002.

647. 2 x 750ml bottles of Château Jacques Blanc Saint-Emilion Grand Cru 2005.

648. 2 x 750ml bottles of Grand Listrac Sélection Listrac-Médoc 1995.

649. 2 x 750ml bottles of Les Fiefs de Lagrange Saint-Julien 2000.

650. 2 x 750ml bottles of Château Faurie de Souchard Saint-Émilion Grand Cru Classé 1998.

651. 2 x 750ml bottles of Château Sociando-Mallet Haut-Médoc 2001.

652. 2 x 750ml bottles of Killibinbin Paracombe Barking Mad Malbec 2005.

653. 2 x 750ml bottles of Cenit Caliterra 2007; one numbered 1442 and the other numbered 2725.

654. 2 x 750ml bottles of Château Soutard Grand Cru Classe 1994

655. 2 x 750ml bottles of Château Léoville Poyferré Saint Julien 1994.

656. 2 x 750ml bottles of Finca Los Portones Mendoza Merlot 2006.

657. 2 x 750ml bottles of Farnito Carpineto Toscana Cabernet Sauvignon 1996.

658. 2 x 750ml bottles of François Parent Pommard 1er Cru Les Épenots 2001.

659. 2 x 750ml bottles of Central Otago Drystone Vineyard Pinot Noir 2002

660. 4 x 750ml bottles of Château Duthil Haut-Médoc Cru Bourgeois; 2 x 2003, and 3 x 2005.

661. 2 x 750ml bottles of Château Duhart-Milon Domaines Barons de Rothschild (Lafite) Pauillac 1998.

662. 2 x 750ml bottles of Château La Pointe Pomerol 2006.

663. 2 x 750ml bottles of Rey De Copas La Mancha Gran Reserva 1996.

664. 2 x 750ml bottles of Maximin de Château Corbin Saint-Émilion Grand Cru 2000.

665. 2 x 750ml bottles of Château de Santenay Bourgogne Hautes-Côtes-De-Beaune Clos de la Chaise Dieu Monopole

666. 2 x 750ml bottles of Altos R Pigeage Rioja 2007 together with 1 x 750ml bottles of Altos R Pigeage Rioja 2009

667. 2 x 750ml bottles of Charles Cimicky Barossa Valley Reserve Shiraz 1999.

668. 2 x 750ml bottles of Château D'Aiguilhe Comtes de Neipperg 2002

669. 2 x 750ml bottles of Can Ràfols dels Caus Penedès Gran Caus Massis del Garraf 2001.

670. 2 x 750ml bottles of Château la Côte Blanche Gaillac 1993.

671. 3 x 750ml bottles of Château La Fleur de Blanchon Lussac-Saint-Émilion 1998.

672. 1 x 750ml bottle of Laithwaite Réserve des Confrères Côtes de Castillon 1999; 1 x 750ml bottle of Laithwaite Réserve des Confrères Côtes de Castillon 2000 and 1 x 750ml bottle of Château du Bourg Laithwaite Côtes de Castillon 2001.

673. 3 x 750ml bottles of L'Épiphanie À Tertre Daugay Saint-Émilion Grand Cru Classé 2009.

674. A selection of 6 x 750ml bottles of Italian red wines to include: 1 x Tempesto d'Italia Vino da Tavola; 1 x Rocca Guiccarda

Chianti Classico Reserva Barone Ricasoli 2000; 1 x Saracosa Toscana 2010; 1 x Amiata Brunello Di Montalcino 2006 and 1 x Paolo Masi Erta e China 2001.

675. A selection of 6 x 750ml bottles of French red wines to include: 1 x Phillipe Bonnin Château la Fleur Blanchon Lussac Saint-Émilion; 1 x La Monex Oak Aged Cabernet Sauvignon 1998; 1 x La Syrah de Folie Vin de ays D'Oc 2009; Benchmark Syrah 1998; 1 x Mas de Daumas Gassac 2000 and 1 x Vignes des Deux Soleil Les Romains Terrors Historiques Les Garrigues 2009.

676. A selection of 6 x 750ml bottles of Australian red wines to include: 1 x Barooga Station South Eastern Australia Bin No 50 1999; 1 x Vasse Felix Margaret River Cabernet Sauvignon 2005; 1 x La Curio 100 McLaren Vale Shiraz Reserve 2005; 1 x Parker Coonawarra Estate Terra Rossa Cabernet Sauvignon Coonawarra 2004; 1 x Deen De Bortoli Durif Family Reserve 2001 and 1 x Eastwood South Eastern Australia Cabernet Sauvignon Shiraz 1997.

677. A selection of 8 x 750ml bottles of Spanish red wines to include: 1 x Castillo Labastida Rioja Crianza 1999; 1 x Viña Izadi Selección Rioja 1999; 1 x Private Reserve Familia Martinez Bujanda Tinto 2001; 1 x Castillo San Lorenzo Rioja Reserva 2001; 1 x Vendimia Seleccionada Martinez Bujanda Rioja Gran Reserva 1995; 1 x Marqués de Murrieta Ygay Crianza Rioja 1999; 1 x Luis Cañas Rioja Reserva Selección de la Familia 1997 and 1 x Amaren Tempranillo Reserva 2001 Juan Luis Cañas.

678. 1 x 750 ml bottle of Château Lascombes Grand Cru Classé 1994.

679. 2 x 750ml bottles of white Domaine des Sénéchaux Châteauneuf-du-Pape 2009.

680. 1 x 750ml bottle of Clos de la Granière Châteauneuf-du-Pape 1997.

681. 2 x 750ml bottles of Paul Zinck Vin d'Alsace Riesling Prestige; 1 x 750ml bottle of Paul Zinck Vin d'Alsace Tokay Pinot Gris Prestige 2001; 1 x 750ml bottle of Paul Zinck Vin d'Alsace Gewurtztraminer Prestige; 1 x 750ml bottle of Jubilee Hugel Alsace Gewurtztraminer "Hugel" 1993 and 1 x 750ml bottle of Jubilee Hugel Alsace Riesling "Hugel" 2000.

682. 2 x 750ml bottles of Château de Puligny Montrachet Monthelie Pinot Noir 2009.

683. 6 x 750ml bottles of Los Vascos Domaine Barons de Rothschild (Lafite) Cabernet Sauvignon 2012.

684. 1 x 750ml bottle of Château de Sales Heritiers de Lambert Pomerol 2001 together with 1 x Château l'Etoile de Viaud Lalande de Pomerol 2003.

685. 3 x 750ml bottles of Les Grandes Chailees Condrieu 2000 together with 1 x 750ml bottle of Les Grandes Chaillées Condrieu 2002, all Antoine and Stéphane Montez.

686. A selection of five 750ml bottles of Bordeaux to include: 1 x Château Verniotte Castillon Côtes de Bordeaux 2009; 1 x La Chapelle de Bordeaux 2012; 1 x Château Les Ancres Bordeaux 1995; 1 x Château Mont-Gueydon Bordeaux 2005 and 1 x Château Montlau Bordeaux Supérieur 1999.

687. 2 x 750ml bottles of Albert Bichot Domaine Du Pavillon Bourgogne 2000.

688. A selection of 8 various 750ml bottles of Australian mixed wines to include: 1 x Laithwaite McLaren Vale The Back Shed 2012; 1 x Yarrunga field Special Reserve Bin No. 303 2004; Yarrunga field Special Reserve Bin

No. 303 1998; 1 x Buronga Growers Holthill Reserve Shiraz 2004; 1 x Barossa Valley The Farms Shiraz 1997; 1 x Jim Barry The McRae Wood Shiraz 2004; 1 x McGuigan Genus 4 Hunter Valley Old Vine Shiraz 2002 and 1 x Elliston Estate Red Cliffs Oak Aged Shiraz Premium Reserve Bin 37 2002.

689. A selection of six French 750ml bottles of French red wines to include: 1 x Château Cantenac Brown Grand Cru Classé Margaux 1990; 1 x Les Courtades Vin de Pays de l'Aude 1996; 1 x Le XV du Président Vin de Pays des Côtes Catalanes; 1 x Château d'Armailhac Grand Cru Classé Pauillac 1994; 1 x Domaine Machard de Gramont Clos Blanc, Pommard Premier Cru 1996; and 1 x Château Lyonnat Lussac-Saint-Émilion 2001.

690. 1 x 750ml bottle of Château La Tour De Mons Cru Bourgeois Margaux 1996.

691. 1 x 750ml bottle of Château Castelbruck Margaux 2004 together with 1 x 750ml bottle of Gérard Bertrand La Forge Corbières Boutenac 2009, numbered 5778 / 8964.

692. A selection of 4 x 750ml bottles of Laithwaites Le Chai au Quai red wines to include: 2 x Le Grand Chai Côtes de Bordeaux 2011; 1 x Le Grand Chai Castillon Côtes de Bordeaux 2011 and 1 x Le Grand Chai Montagne Saint-Émilion 2012.

693. 3 x 750ml bottles of Sordo Barolo; 2 x 1999 and 1 x 1995.

694. 2 x 750ml bottles of Sordo Barolo 2007.

695. A selection of 6 x 750ml bottles of New Zealand white wines to include: 1 x Stonewall Forrest Estate Marlborough Sauvignon Blanc 1999; 2 x Split Apple Rock Bay Sauvignon Blanc 2016; 1 x Split Apple Rock Bay Nelson Riesling 2005; and 2 x McCashins Nelson Sauvignon Blanc 2002.

696. 9 x 750ml bottles of Château Rozier Saint-Émilion Grand Cru 2000.

697. 6 x 750ml bottles of McLaren Vale Lot 7 Oak Aged Shiraz 2003.

698. 1 x 750ml bottle of Martinez Bujanda Gran Reserva Rioja 1996 together with 1 x 750ml bottle of Familia Martinez Bujanda Private Reserve Rioja 1996.

699. 4 x 750ml bottles of various Le Grand Chai Bordeaux to include: 1 x Château La Brande Castillon Côtes de Bordeaux 2010; 1 x Castillon Côtes de Bordeaux 2009; 1 x Saint-Estèphe 2007 and 1 x Saint-Émilion Grand Cru Cuvée Elegance 2006.

700. 1 1500ml bottle of Vieilles Vignes de la Jasse 2007.

701. 4 x 750ml bottles of Legenda Cahul Cabernet Sauvignon 2004.

702. A selection of 6 x 750ml bottles of French white wines to include: 2 x Vouvray Réserve Champalou 2003; 2 x Domaine Gérard Chavy & Fils Puligny-Montrachet 2000 and 2 x Château de Santenay Saint-Aubin En Vesvau 2002.

703. A selection of 3 x 750ml bottles of Saint-Émilion Grand Cru to include: 1 x Château Rol Valentin 2001; 1 x Château Grand-Pontet Classé 1999 and 1 x Château Laroze Classé 1998.

704. 2 x 750ml bottles of Château Labégorce Margaux 1999.

705. 5 x 750ml bottles of Roche Lacour Brut; 2 x 2015; 1 x 2011; 1 x 2013 and 1 x 2014.

706. 2 x 750ml bottles of Château La Nerthe Châteauneuf-du-Pape 1998.

707. 2 x 750ml bottles of Domaine de la Roncière Châteauneuf-du-Pape Flor de Ronce 2001.

708. A selection of 6 x 750ml various bottles of Sancerre to include: 1 x Domaine Pierre Prieur & Fils La Damnée des Prieur 1997; 1 x Domaine Pierre Prieur & Fils La Damnée des Prieur 2005; 1 x Domaine Pierre Prieur & Fils La Damnée des Prieur 2007 1 x Domaine Paul Cherrier et Fils 2000; 1 x Henri Bourgeois La Porte du Caillou Chavignol 2001, and 1 x Cave des Vins de Sancerre 2006.

709. 1 x 750ml bottle of Château-Lascombes Margaux Grand Cru Classé 2001.

710. 2 x 375ml bottles of Château Rieussec Sauternes 2003.

711. 1 x 500ml bottle of Château Tirecul La Gravière Monbazillac 1997.

712. 6 x 750ml bottles of Château D'Escurac Medoc Cru Bourgeois 1997. (2 bottles with damaged labels).

713. A selection of six 750ml bottles of various white and red wine to include: 2 x Don Cayetano Sauvignon Blanc 2014 (Chile); 1 x Casa del Rio Verde Sauvignon Blanc 2006 (Chile); 1 x Elqui Valley Alta Tierra Syrah Viognier 2006 (Chile); 1 x La Cittadella Dealurile Transilvaniei Pinot Grigio 2006 (Romania); 1 x Dassen View Coastal Region W O Chenin Blanc 2006 (South Africa).

714. A selection of 4 x 750ml bottles of Italian white wines to include: 2 x Villa Fiori VINO da Tavola Bianco; 1 x Terra di Colombella Terre di Chieti Pinot Grigio 2004 and 1 x Paolo Masi Castellaccio Vendemmia 1994

715. 4 x 750ml bottles of Villa Farnia di Farnese Sangiovese Daunia 2008.

716. A selection of 4 x 750ml bottles of French red wines to include: 1 x Château Labadie Médoc 2001; 1 x Château Larose-Trintaudon Haut-Médoc 2002; 1 x Château La Tour Carnet Haut-Médoc Grand Cru Classé 1999 and 1 x 1 x Château Sénylac Haut-Médoc 1995

717. A selection of 6 x 750ml bottles of French red wines to include: 1 x Château de Roquebrune Lalande-De-Pomerol 1995; 1 x Henry Laithwaite Château Verniotte Castillon Côtes De Bordeaux 2009; 1 x Le Champ des Etoiles Pinot Noir 2012; 1 x Haut Marbuzet Saint Estephe 2004; 1 x Chateau Lorgueil Cabardès 1998 and 1 x Vosne-Romanée 1er Cru Les Suchots Domaine Manière 1994.

718. A selection of 4 x 750ml bottles of Chablis to include: 1 x Vaillons Domaine Servin Premier Cru 2002; 1 x Domaine Tremblay-Bouchard 1999; 1 x La Chablisienne Premier Cru Montmain 2004 and 1 x Vieilles Vignes Sélection Massale Domaine Servin 2004.

719. A cased set of 12 x 750ml bottles of Château La Clarière Laithwaite 2009.

720. A cased set of 12 x 750ml bottles of Château La Clarière Laithwaite 2011.

721. 10 x 750ml bottles of Château La Clarière Laithwaite Côtes de Castillon 2006.

722. A selection of various 8 x 750ml bottles of Rioja to include: 2 x Martinez Bujanda Gran Reserva 2004; 2 x Baron De Ley Fortaleza De Imas 2001; 2 x Cosecha Gran Reserva 1998 and 2 x Cosecha Crianza 1999.

723. A selection of 5 x 750ml various bottles of Châteauneuf-du-Pape to include: 2 x Cuvée du Vatican 2006; 1 x Philippine de Saint-Cyrille 2010; 1 x Domaine des Pères de l'Eglise 2001 and 1 x Caves Saint Pierre for Tesco 2006.

724. A selection of 8 x 750ml bottles of various white and rosé wines to include: 1 x Bourgogne Antonin Rodet Chardonnay 2002 (France); 1 x Andrew McPherson's The Full Fifteen Chardonnay 2014 (Australia); 1 x Vina Maipo Reserva Chardonnay 2010 (Chile); 1 x Esprit de Combelle Chardonnay 2006 (France); 1 x Casa Piedra Alta San Juan Pinot Grigio 2004 (Argentina); 1 x Fleurieu Peninsula MT Jagged Bullock Road Sémillon Chardonnay Riesling 2011 (Australia); 1 x Château Le Coin Bordeaux 2012 (France) and 1 x Wiseman's Crossing Rossetto Estate Chenin Blanc Chardonnay 2005 (Australia).

725. A selection of 3 x various 750ml bottles of French red wines to include: 1 x Château Berliquet Saint-Émilion Grand Cru 1999; 1 x Château Dassault Saint-Émilion Grand Cru Classé 1995 and 1 x Jean-Claude Belland Corton Grand Cru La Vigne au Saint 2005.

726. A selection of 7 x 750ml bottles of M. Chapoutier red wines to include: 5 x Deschamps Saint-Joseph 1999 and 2 x La Croix des Grives Cotes-du-Rhone 2003.

727. A selection of 6 x various 750ml bottles of French white wines to include: 2 x Roux Père et Fils Chassagne-Montrachet 2000; 1 x Roux Père et Fils Saint-Véran 2000; 1 x Ropiteau Chassagne-Montrachet 2000; 1 x Domaine Michel Juillot Mercurey 1er Cru "En Sazenay" 2008 and 1 x Vincent Girardin Puligny-Montrachet Les Enseignerres 2003.

728. A selection of 6 x 750ml bottles of various French white wines to include: 1 x Esprit de Combelle Chardonnay 2006; 1 x Laithwaite V.O; 1 x Viognier le Sommet 2000; 1 x Benjamin de Vieux Chateau Gaubert Graves 2001; 1 x Seigneur de Chenonceau Sauvignon Blanc Touraine 2004 and 1 Beauroy Domaine de l'Orme Chablis Premier Cru 2004.

729. 1 x 750ml bottle of Château Lynch-Bages Pauillac Médoc Grand Cru Classé 1961 contained within a fitted wooden box.

730. A selection of 8 x various 750ml bottles of various French red wines to include: 2 x Château Les Cardinaux Bordeaux 1992; 2 x Domaine de Pierreux Beaujolais-Villages 1980; 2 x Château Peyraud Bordeaux Supérieur 1978; 1 x Château La Gachere Bordeaux Supérieur 1990 and 1 x Comte De Mosbourg Cahors 2000.

731. A selection of 5 x 750ml bottles of various Spanish wines to include: 1 x Sendero Des Santos Albarino Rias Baixas 2013; 1 x Palacio Del Conde Valencia Gran Reserva 2000; 1 x Bodegas Pedro Luis Martinez Jumilla 2004; 1 x Bodegas Alvaro Moscatel Vino de Lico and 1 x Marques de Grinon Dominio de Valdepusa Petit Verdot 2000

732. A selection of 4 x various 750ml bottles of red wines to include: 1 x Domaine Courberolles Côtes du Roussillon Villages 1998 (France); 1 x Henri Sabardeil Chanteclair (France); 1 x Vin de Pays D'Oc Merlot Syrah (France) and 1 Legenda Oak Aged Cahul Pinot Noir 2005 (Moldova).

733. 3 x 750ml bottles of Roche Lacour Cremant de Limoux Brut Rose, Languedoc-Roussillon 2014.

734. A selection of 4 x 750ml bottles of Rioja to include: 1 x Lagunilla Casa Del Comendador Gran Reserva 1996; 1 x Manuel Quintano Reserva 1995; 1 x Luis Cañas Amaren Tempranillo Reserva 1996 and 1 x Luis Cañas Rioja Reserva 1995.

735. A selection of 4 x 750ml bottles of white wines to include 2 x VZ Van Zellers Douro 2011 (Portugal); 1 x Le Chai au Quai La Voûte Sélection Terroir 2011 (France) and 1 x Le Chai au Quai La Voûte Sélection Terroir 2013 (France).

736. A selection of 8 x 750ml bottles of French white wines to include: 2 x Domaine Michel Thomas Sancerre 2011; 2 x Domaine du Haut Morlu Touraine Sauvignon Blanc 2003; 1 x Domaine Raimbault-Pineau Pouilly-Fumé Cuvée Cassandre 2010; 1 x Les Rochettes Pouilly-Fumé 2001; 1 x Marie-Louise Parisot Meursault 1997 and 1 x Laboure-Roi Meursault 2005

737. 5 x 750ml bottles of Château Preuillac Cru Bourgeois Médoc 1995.

738. A selection of 3 white and 3 red x 750ml bottles of wines to include: 2 x Casella The Black Sheep Durif Suraz 2012; 1 x Casella The Black Sheep Durif Suraz 2013 and 3 x Laithwaite Bordeaux Sauvignon Blanc 2006.

739. A cased set of 12 x 750ml bottles of Château Grand Corbin-Despaigne Saint-Émilion Grand Cru 1998.

740. 1 x 750ml bottle of Tulloch Limited Release Hector of Glen Elgin 1991 (Australia).

741. An empty jeroboam bottle labelled A. Charbaut et Fils Brut Champagne with cork. Approx. 65 cms tall.

BEING SOLD ON BEHALF OF HONITON CHILDREN'S HOSPICE

742. 1 x 750ml bottle of Yalumba "Kingston Town" Vintage Port 1980 (Australia).

743. 1 x 750ml bottle of Penfolds Grange Hermitage Bin 95 Vintage Port 1980 (Australia).

744. 1 x 750ml bottle of Grahams Vintage Port 1977.

745. 1 x 750ml bottle of Basedows of Barossa Vintage Port 1973 (Australia).

746. 1 x 750ml bottle of Campbell's Vintage Port 1965

747. 4 x 750ml bottles of Churchill's Crusted Port 1984.

748. 1 x 100ml bottle of Taylor's First Estate Reserve Port together with 1 x 750ml bottle of Cockburns Fine Ruby Port and 1 x Sandeman Partners' Ruby Port.

749. 1 x 750ml bottle of Gallimand Père et Fils Champagne Cuvée Prestige 2008 together with 1 x 750ml bottle of Laurens Clos des Demoiselles Cremant de Limoux Brut and 1 x 750ml bottle of Cordorniu Cava Reserva Brut.

750. 1 x 100ml bottle of Dubonnet together with 1 x 1 litre bottle of Pimm's; 1 x 70 ml bottle of Stone's Original Green Ginger Wine and 1 x 725ml bottle of Rochester Dickensian Recipe Non-Alcoholic Ginger.

751. 2 x 1 litre bottles of Gordon's Special London Dry Gin, together with 1 x 70ml bottle of Original Strength Plymouth Gin and 1 x Palmers Distilled London Dry Gin.

752. 1 x 70ml bottle of Gordon's Sloe Gln Liqueur together with 1 x 350ml bottle of Tia Maria Liqueur; 1 x 70ml of Cointreau and 1 x 1 litre bottle of Jack Daniel's Old Time Old No.7 Quality Tennessee Sour Mash Whiskey.

753. 1 x 500ml bottle of Courvoisier Cognac in box together with 2 x 700ml bottles of Courvoisier V S Cognac.

754. 1 x 700ml bottle of Raynal & Cie Three Barrels Rare Old French Brandy in box, together with 1 x bottle of Martell V S Fine Cognac in gift wrapped box and 1 x 350ml bottle of Somerset Five Year Old Cider Brandy.

755. 1 x 1 litre bottle of The Famous Grouse Finest Scotch Whisky together with 1 x 1 litre

bottle of Bell's Finest Old Scotch Whisky and 1 x 1 litre bottle of Wm Morrison Finest Scotch Whisky.

756. 1 x 700ml bottle of The Famous Grouse Blended Scotch Whisky together with 1 x 700ml bottle of Linkwood Distillery 1988 Single Malt Highland Whisky; 1 x 700ml bottle of The Glenlivet Pure Single Malt Scotch Whisky and 1 x 700ml bottle of Northern Scot Blended Scotch Whisky.

757. 1 x 1 litre bottle of Glenfiddich Special Reserve Single Malt Scotch Whisky together with 1 x 700ml bottle of Glenfiddich Special Reserve Single Malt Scotch Whisky and 1 x 1 litre bottle of Grant's The Family Reserve Blended Scotch Whisky

758. 1 x 700ml bottle of Glenfiddich Special Reserve Single Malt Scotch Whisky in box, together with 1 x 700ml bottle of Jonnie Walker Black Label Old Scotch Whisky in box and 1 x 750ml bottle of Wild Turkey Rare Breed Kentucky Straight Bourbon Whiskey Barrel Proof in box.

759. 1 x 700ml bottle of Glenfiddich Special Reserve Single Malt Whisky in box together with 1 x 700ml bottle of Bowmore Legend Islay Single Malt Whisky in tin.

760. 1 x 700ml bottle of Glenmorangie Single Malt Scotch Whisky Ten Years Old in box together with 1 x 700ml bottle of Bell's Finest Old Scotch Whisky in box.

761. 1 x 750ml bottle of Clan Campbell The Noble Scotch Whisky in tin together with 1 700ml bottle of Glenfiddich Single Malt Scotch Whisky Aged 12 Years in green box and 1 x 700ml bottle of The Famous Grouse Vintage Malt Whisky 1989 in tin.

762. A cased set of 6 x 750ml bottles of Pebblebed Sparkling Rosé.

WHITTONS WOULD LIKE TO WISH ALL OUR CLIENTS
A VERY MERRY CHRISTMAS AND A PROSPEROUS 2018.



602



679



710



613



690



694



626



737



63

TERMS AND CONDITIONS OF SALE

Whittons carries on business with bidders, buyers and all those present in the auction room prior to or in connection with a sale on the following general conditions and on such other terms, conditions and notices as may be referred to herein.

1. BIDDING PROCEDURES AND THE BUYER

a) Bidders are required to register their particulars prior to bidding and to satisfy any security arrangements before entering the auction room to view or bid. We do not accept bids from any person who has not completed and delivered to us one of our Bidding Forms. You will be asked for photographic proof of identity, residence and references. Bids will not be accepted if you fail to provide sufficient identification when asked to produce it. We may also ask for a deposit to be paid prior to bidding. We may refuse entry to a Sale to any person even if that person has completed a Bidding Form.

b) The maker of the highest bid accepted by the Auctioneer conducting the sale shall be the buyer at the hammer price and any dispute regarding a bid shall be made and settled at the Auctioneer's absolute discretion, and may reoffer the Lot during the course of the auction or otherwise. The Auctioneer shall act reasonably in exercising this discretion. The Auctioneer's decision is final.

c) Bidders shall be deemed to act as principals.

d) Once made no bid can be withdrawn.

e) Our right to bid on behalf of the seller is expressly reserved up to the amount of any reserve and the right to refuse any bid is also reserved.

2. INCREMENTS

a) Bidding increments shall be at the Auctioneer's sole discretion.

3. THE PURCHASE PRICE

a) The buyer shall pay the Hammer Price together with a premium thereon of 18% plus VAT on the premium at the rate imposed by law on all lots. Lots purchased online will incur an additional charge in the sum of 3% of the Hammer Price plus VAT at the rate imposed by law.

4. VALUE ADDED TAX

a) Where a lot is marked with an asterisk (*), VAT will be payable at the standard rate as imposed by law on the Hammer Price as well as being added to the buyer's premium.

b) Where a lot is marked with a double asterisk (**), VAT will be charged at a reduced VAT rate (currently 5%) to the gross price of that lot being the Hammer Price plus the buyer's premium.

c) Where no asterisk is marked against a lot, no VAT is payable on the Hammer Price, and is deemed to have been sold under the Auctioneer's Margin Scheme. VAT included within the premium is not recoverable as input tax.

5. PAYMENT

a) Your obligation to pay for a lot occurs when the Auctioneer's hammer has fallen in respect of the lot.

b) Immediately a lot is sold you will give to us, if requested, proof of identity and pay to us the total amount due in cash or in such other way as agreed by us. Any payments by

you to us may be applied by us towards any sums owing from you to us on any account whatever without regard to any directions of you or your agent, whether express or implied.

c) No cash payments will be accepted over £6000.00 (Six Thousand Pounds Sterling).

d) Payment is acceptable in cash, credit or debit card. A handling charge of 2% will be added to all purchases made by credit card. Payments made by debit card will incur no extra charge. Payment can be made by direct bank transfer into our bank account.

e) Payment of the purchase price and all other sums payable by you to Whittons must be made in the currency in which the sale was conducted within seven working days following the sale. Payment must be received in cleared funds by the seventh working day following the sale. Failure to provide cleared funds within this time may result in remedies being exercised as stated in condition 7.

6. TITLE AND COLLECTION OF PURCHASES

a) Ownership of the lots purchased shall not pass to the buyer until payment has been made in full to us of the total amount due, to include all premiums, charges and postal costs where applicable, and received in cleared funds by Whittons.

b) Responsibility of the lot passes to the buyer at the fall of the Auctioneer's hammer. The seller will no longer be responsible for the lot thereafter. The buyer will indemnify the seller and keep the seller fully indemnified from and against all claims, proceedings, costs, expenses and losses arising in respect of any injury, loss and damage caused to the lot after the fall of the Auctioneer's hammer until the buyer obtains full title to it.

c) You shall, at your own risk and expense take away any lots that you have purchased and paid for in full, not later than seven working days following the sale or upon the clearance of any cheque used for payment after which you shall be responsible for any removal, storage and insurance charges. No purchase can be claimed or removed until it has been paid for in full.

d) Title to the lot remains in and is retained by the seller until payment has been made in full to us of the total amount due, to include all premiums, charges and postal costs where applicable, and received in cleared funds by Whittons.

e) All items are held at the risk of the buyer. If they are not removed within fourteen working days of the sale the auctioneers will instruct a local carrier to remove them for storage. The buyer will be responsible for paying all charges incurred and for making arrangements in advance for the removal of items from their store after payment of their charges and on production of our receipt for the items.

7. REMEDIES IN THE EVENT OF NON-PAYMENT OR PURCHASES NOT BEING COLLECTED ON TIME

If any lot is not paid for in full and taken away in accordance with these conditions or if there is any other breach of these conditions, we, as agent for the seller and on our own behalf, shall at our absolute discretion and without prejudice to any other rights we may have be entitled to exercise one or more of the following rights and remedies: To proceed against you for damages for breach of contract;

a) To rescind the sale of that lot and/or any other lots sold by us to you;

b) To resell the lots (by auction or private treaty) in which case you shall be responsible for any resulting deficiency in the total amount due (after crediting any part payment and adding any resale costs). Any surplus so arising shall belong to the seller;

c) To remove, store and insure the lot at your expense and, in the case of storage, either at our premises or elsewhere;

d) To charge interest at a rate not exceeding 1.5% per month on the total amount due to the extent it remains unpaid for more than seven working days after the sale;

e) To retain that or any other lot sold to you until you pay the total amount due

f) To reject or ignore bids from you or your agent at future auctions or to impose conditions before and such bids shall be accepted.

g) To apply any proceeds of sale of other lots due in future becoming due to you towards the settlement of the total amount due and to exercise a right to possession (lien) of any of your property in our possession for any purpose until the debt due is satisfied.

h) We shall, as agent for the seller and on our own behalf pursue these rights and remedies only so far as is reasonable to make appropriate recovery in respect of breach of these conditions.

8. THIRD PARTY LIABILITY

All members of the public enter our premises at their own risk. They must make themselves aware of all security and fire arrangements in the building and to note the layout of the accommodation. Accordingly neither the Auctioneer nor our employees or agents shall incur any liability for death or personal injury (except as required by law by reason of our negligence) or similarly for the safety of persons visiting prior to or at a sale.

9. RIGHT TO REFUSE ENTRY

Whittons shall have the right at our discretion, to refuse admission to our premises or attendance at our auctions by any person.

10. COMMISSION BIDS

We will, if so instructed, execute bids on a buyer's behalf. The bid must be received by us no later than one hour prior to the commencement of the sale for which the lot is being sold. The bid must be clearly written or typed, and must have the full name, address and telephone number of the person bidding, and signed by the person making the bid. Neither the Auctioneer nor our employees shall be held responsible for any failure to do so save where such failure is unreasonable. Where two or more commission bids are received at the same price, the Auctioneer reserves the right and absolute discretion to choose which bid shall prevail. It will be assumed that the prospective buyer has carefully inspected the lot and has satisfied themselves as to its condition prior to leaving the commission bid. No bids can be retracted once the item has been sold.

11. WARRANTY OF TITLE AND AVAILABILITY

The seller warrants to the auctioneers and the buyer that the seller is the true owner of the property consigned or is properly authorised by the true owner to consign it

for sale and is able to transfer good title to the property free from any third party claims.

12. AGENCY

The auctioneers normally act as agent only and disclaim any responsibility for default by sellers or buyers.

13. TERMS OF SALE

The seller acknowledges that Lots are sold subject to the stipulations of these conditions in their entirety and on the terms of consignment as notified to the consignor at the time of the entry of the lot.

14. DESCRIPTIONS

Whittons will not be held responsible for misrepresentation, and any wording or description either spoken written discussed published or otherwise shall not form the basis of any contract. Items are described as opinion only, and whilst due diligence is taken to make accurate descriptions, it may be impracticable to ensure accuracy in its entirety. All items are therefore sold as seen and prospective buyers must inspect view and take their own independent expert advice should they so wish before bidding on any item in any sale and must satisfy themselves as to the accuracy of any description applied to a lot. Prospective buyers bid on the understanding that representations or statements as to authorship genuineness origin date age provenance condition size shape weight colour etcetera are opinions only. Subject to the foregoing neither we the auctioneer nor our employees or agents nor the seller accept liability for the correctness of such opinions and all conditions and warranties, whether relating to description, condition or quality of lots, express, implied or statutory, are hereby excluded. Private treaty sales made under these conditions are deemed to be sales by the auction for purposes of consumer legislation.

Notwithstanding this condition any Lot which proves to be a deliberate forgery as defined may be returned to us by you within 14 days of the auction provided it is in the same condition as when bought, and is accompanied by particulars identifying it from the relevant catalogue description and a written statement of defects. If we are satisfied from the evidence presented that the Lot is a deliberate forgery we shall refund the money paid by you for the Lot including any buyer's premium provided that

a) if the catalogue reflected the accepted view of scholars and experts as at the date of sale or

b) you personally are not able to transfer a good and marketable title to us, you shall have no rights under this condition.

The right of return provided by this Condition is additional to any right or remedy provided by law or by these Conditions of Sale.

15. ONLINE BIDDING

Whittons may offer an online bidding service via www.the-saleroom.com for bidders who cannot attend the sale. In completing the bidder registration on www.the-saleroom.com and providing your credit card details and unless alternative arrangements are agreed with Whittons you:

a) authorise Whittons if they so wish to charge the credit card given in part or full payment including all fees for items successfully purchased in the auction via www.the-saleroom.com and

b) confirm that you are authorised to provide these credit card details to Whittons through www.the-saleroom.com and agree that Whittons are entitled to dispatch the goods to the card holder name and card holder address provided in fulfilment of the sale.

Please note that any lots purchased via the-saleroom.com live auction service will be subject to an additional 3% commission charge + VAT at the standard rate imposed on the hammer price. Buyers registering to bid through www.the-saleroom.com must submit credit/debit card details to register. Whittons will take a deposit of maximum £500.00 sterling from the registered credit / debit card at the discretion of the auctioneer. If the buyer is unsuccessful this deposit will be refunded. If successful the deposit will be deducted from the final invoice. The deposit will be subject to variables in exchange rates and bank charges that the buyers' bank might levy. The buyer will be liable for such charges.

16. CHEQUES

Cheques will only be accepted for payment at the auctioneer's discretion. No purchases will be removed from the saleroom unless cleared funds have been received by us. Any prospective purchasers who wish to pay by cheque must inform the auctioneers at least 7 working days before the sale. It will be at the auctioneer's discretion whether to take a cheque in lieu of prospective purchases prior to the sale and allowing for clearance of the cheque. If you are later unsuccessful in your purchase, the amount of your cheque will be refunded. Payment in cheque will not be acceptable on the day of the sale if prior arrangement has not been made with the auctioneer but if you wish to pay using this method then your purchases will be withheld until full clearance of the cheque has been granted. Only authorised payments by card or cash will be allowed to allow removal of goods on sale day.

17. TELEPHONE PAYMENTS

Payments will not be accepted if made at the telephone for invoices of more than £300.00 unless the buyer is known to the auctioneer. Card payments can be made in person or by bank transfer cash up to £6000.00 (Six Thousand Pounds Sterling).

18. SELLER'S COMMISSION AND CHARGES

Commission is charged at 15% plus VAT at the standard rate on the hammer price. Items which sell for less than £20.00 will incur a commission charge of £5.00 plus VAT at the standard rate. No charge will be made for items which fail to sell. Withdrawn lots may incur an administration charge if withdrawn once the item has been published for sale. No charges are made for catalogue illustration photography or advertising unless special illustration photography or advertising is deemed necessary and not without the consent of the vendor. A charge of £3.00 per item will be charged per item for each item that requires electrical testing.

19. RESERVES

Items will only be accepted with reserve which, in the auctioneer's opinion, are likely to realise at least £20.00 or more. Any item worth less than this value will be deemed to be entered for sale without reserve. Any items which are taken with a reserve price will be accepted on the basis that the auctioneer will have discretion to sell that item for 10% less than the reserve if a buyer at that price exists on the day. Whittons can

refuse to accept any item for sale where, in the auctioneer's opinion, the reserve price suggested by the seller is too high and/or the item would not sell.

20. SELLER'S CONDITIONS

a) All sellers must sign the declaration confirming conditions of sale on the receipt which is given to you when you submit goods to us for sale. All items handed over to us are assumed to be given to us for the purpose of entering those lots for sale by auction.

b) All sellers must sign to confirm that they are the true owners of the goods entered for sale and that they have legitimate title to those goods free of any encumbrance and free from any third party or that they have authority to dispose of the goods on behalf of the true owner and are able to transfer good and marketable title to the property free from any third party claims.

c) All goods entered for sale must comply with all safety regulations under the Consumer Protection Act and the Furnishing Fire / Safety Regulations 1988.

d) The seller authorises Whittons to deduct commission at the rates quoted and by the signing the form, the seller is deemed to have accepted the terms and conditions of sale.

e) The seller has a duty to disclose all defects restorations or alterations to the goods at the time they are entered for sale and is duty bound to bring such defects restorations or alterations to auctioneer's attention in writing. Failure to do so notwithstanding any description of the goods given by the auctioneers can result in the sale being rescinded and the seller being responsible for all allied costs incurred by the auctioneer and the buyer.

f) The seller warrants in respect of any item of mechanical or electrical equipment that it is:

a. in working order

b. reasonably fit for the purpose for which it is designed or adapted

c. that it can be used safely and without risk of causing injury or damage and

d. will indemnify Whittons against any loss or damage suffered in consequence of any breach of the above warranty and undertaking.

g) The Vendor gives Whittons full and absolute right to photograph and illustrate any lot placed with them for sale and to use such photographs and illustrations at any time at their absolute discretion whether or not in connection with the auction.

h) Sellers selling any assets of their business must disclose whether they are registered for value added tax (VAT) at the time the goods are presented for sale and disclose the VAT registration number and indicate clearly whether the goods are to be sold under the margin scheme and where this is the case, VAT will not be recoverable by the seller.

English law applies to the interpretation of these Conditions.





THE FINE ART AUCTION ROOMS
DOWELL STREET · HONITON · DEVON EX14 1LX
01404 517000 · 01392 345454 · 01726 983734
info@whittonsauctions.co.uk
www.whittonsauctions.co.uk