



WHITTONS
AUCTIONEERS & VALUERS

SPRING AUCTION 2016

10th March 2016

Cover Illustrations

Front: Lot 427

Back: Lot 478

Inside Front: Lot 155

Inside Back: Lot 494





SPRING AUCTION

THURSDAY 10TH MARCH 2016

Commencing at 10.00 am

Live Internet Bidding via



and **invaluable**

EACH LOT IS ILLUSTRATED ONLINE

VIEWING TIMES:

Saturday 5th March 10.00 am – 1.00 pm

Sunday 6th March 10.00 am – 1.00 pm

Monday 7th, Tuesday 8th and Wednesday 9th March 9.30 am – 4.30 pm

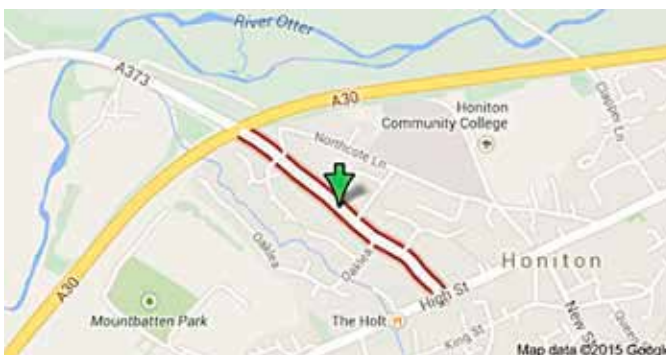
ALL COMMISSION BIDS AND
TELEPHONE BIDS MUST
BE REGISTERED WITH THE
AUCTIONEERS IN WRITING BY
4.30 PM THE DAY BEFORE
THE SALE.

YOU MUST REGISTER TO BID,
FOR WHICH PHOTOGRAPHIC ID
IS REQUIRED.

A 10% DEPOSIT OF THE LOWER
ESTIMATE OF THE LOT ON WHICH
YOU WISH TO BID WILL BE
REQUIRED FOR ALL TELEPHONE
BIDS. FORMS ARE AVAILABLE TO
DOWNLOAD FROM OUR WEBSITE.

PHOTOGRAPHIC ID WILL BE
REQUIRED FROM ANYONE
WISHING TO VIEW THE WATCHES
AND JEWELLERY.

BUYERS PREMIUM 15% + VAT



THE FINE ART AUCTION ROOMS
DOWELL STREET
HONITON
DEVON
EX14 1LX
01404 517000 · 01392 345454
info@whittonsauctions.co.uk
www.whittonsauctions.co.uk



Order of sale

**Thursday 10th March
at 10.00am**

Silver 1-164

There will be a 20 minute break.

Jewellery & Watches 165 - 400

There will be a 20 minute break.

Pictures & Works of Art 401 - 494

Collectables & Porcelain 495 - 589

Furniture 590-655

SILVER





6

1. A good heavy pair of embossed and chased napkin rings in fitted box. Sheffield. By WH. Approx. 57 grams. Est. £40 - £60.

2. A small cream and sugar jug on pedestal base. Birmingham. By CW. Approx. 138 grams. Est. £40 - £60.

3. A good quality silver mounted paper knife. London. By CL. Est. £30- £40.

4. A silver mounted cut glass decanter with removable stopper. Est. £60 - £70.

5. An unusual square string holder with glass body. London. By HC&Co. Est. £200 - £250.

6. LIBERTY & Co. An unusual enamelled tea strainer with pierced bowl. Est. £150 - £200.

7. A good quality Georgian rattle and teether. Est. £250 - £300.



7

8. A large oval boat shaped bread dish with embossed decoration and reeded border. Birmingham. By CH. Approx. 368 grams. Est. £250 - £300.

9. An oval boat shaped pin cushion mount with ball decoration. Birmingham. By WJW&Co. Est. £120 - £150.

10. A small silver sauce boat with card cut rim. Birmingham. By WB. Approx. 146 grams. Est. £30 - £50.

11. A heavy OE basting spoon punched MF. Approx. 179 grams. Est. £50 - £60.

12. A quantity of OE cutlery. Approx. 244 grams. Est. £40 - £60.

13. A pair of Continental grape scissors, the handles embossed with warriors. Est. £30 - £50.

14. A Georgian helmet shaped cream jug with bright cut decoration. Approx. 85 grams. Est. £25 - £30.

15. A small tapered spill vase together with napkin ring etc. Approx. 74 grams. Est. £20 - £30.

16. An unusual Continental silver dagger mounted with a cowboy scene. Est. £60 - £80.

17. An unusual Continental ceiling wax holder with reeded decoration. Approx. 126 grams. Est. £80 - £100.

18. An attractive engraved three piece tea service with bead decoration. London. By WWW. Approx. 11 grams. Est. £300 - £400.

19. An attractive Georgian scroll decorated mug with snake decorated handles on pedestal base. London. By WH. Approx. 148 grams. Est. £100 - £150.



19

20. A heavy Eastern circular box with dome top lid. Approx. 110 grams. Est. £40 - £60.

21. Two heavy Eastern dishes with coin inset. Approx. 222 grams. Est. £30 - £40.

22. A good quality egg shaped sewing box with fitted interior and loop top. London. By HWN. Est. £380 - £420.



22

23. A good Georgian helmet shaped cream jug with beaded decoration and scroll handle. London. By WC. Est. £120 - £150.

24. An unusual brass Continental enamelled vesta case depicting a lady cyclist to front cover, and with skirts aloft to inside cover. Wording: "Voyage... de la terre...à la lune!!!" Est. £150 - £200.

25. A good quality cased set of six Georg Jensen cake forks in fitted box. Est. £350 - £400.

26. A good hinged top tortoiseshell tea caddy on four ivory ball feet with waisted sides. Approx. 9 cms high. Est. £300 - £350.

27. A good pair of Continental bottle vases pierced with figures and scroll decoration. Est. £380 - £420.

28. An unusual Masonic pendant with engraved decoration. Approx. 7.5 cms across with loop top. London 1902. By GK&S. Approx. 65 grams. Est. £120 - £150.

29. A good quality tortoiseshell dressing table set, together with matching bottles and silver inlay. Est. £450 - £500.

30. Four silver hallmarked Masonic medals and badges. Est. £30 - £40.



25

31. A good pair of jester sugar tongs with textured handle. London 1824. By CR. Est. £180 - £220.

32. A pair of unusual sugar tongs in the form of a Chinese character with outstretched arms. London 1915. By GH&M. Est. £150 - £200.

33. A good quality Chinese belt mounted with eleven MOP panels. Est. £100 - £150.

34. A good quality enamelled vesta case of a horse racing scene with hinged top. Birmingham 1893. Est. £300 - £350.



35

35. A good quality shooting butt marker in the form of a vesta case inset with ten numbered pegs and hinged top. London 1910. By JC&V. Est. £500 - £600.

36. A small five bar toast rack. London. By A. Bros. Est. £20 - £30.

37. A good quality Victorian stilton scoop with turned handle. London 1885. By EH. Est. £200 - £250.

38. An attractive scroll decorated caddy spoon with beadwork. Sheffield. By RP&EH. Est. £30 - £40.

39. An unusual Eastern fuse, the body decorated with scrolls and leaves on suspension chain. Approx. 12 cms long. Est. £100 - £150.

40. A set of six early Georgian tea knives with MOP handles. Sheffield 1816. By IR. Est. £60 - £80.

41. A pair of heavy Continental shell decorated salts with engraved decoration. Approx. 113 grams. Est. £30 - £40

42. A pair of Georgian bright cut sugar tongs. London. By WW. Est. £15 - £20.

43. A small plain tapered christening cup. Sheffield. By HW. Approx. 102 grams. Est. £50 - £60.



46

44. An unusual tapered French beaker with engraved decoration. Approx. 90 grams. Est. £50 - £60.

45. A small Edwardian ring box with hinged top on three sweeping supports. Birmingham 1925. Est. £40 - £50.

46. A large round dressing table mirror, the top decorated with scrolls and leaves. Birmingham. By H&M. Approx 40 cms high. Est. £400 - £500.

47. A silver cherub decorated hand mirror. Chester. By JR&G. Est. £30 - £40.

48. An unusual engraved vesta case / sovereign holder with hinged mount. London. Est. £40 - £60.

49. ED WOLLENWEBER: A good circular caddy decorated with winged infant and floral decoration. Approx. 245 grams. Est. £250 - £300.



49

50. An unusual silver and MOP fruit knife / orange peeler decorated with flowers and piercing. Est. £70 - £80.

51. A small scroll decorated tea infuser with hinged top and suspension chain together with a heart shaped box and one other. Est. £100 - £150.

52. A pair of circular Georgian salts with beaded rim. London by GR. Approx. 250 grams. Est. £60 - £80.

53. A small arched bar toast rack. Chester. By JJ&F. Approx. 35 grams. Est. £20 - £30.

54. A pair of OE tablespoons. London. By SH. Est. £20 - £30.

55. An attractive pierced sweet dish decorated with flowers and leaves on pedestal base. Approx. 395 grams. Est. £300 - £350.

56. An attractive Georgian pierced sweet dish with swing handle and pierced decoration. London. By WP. Approx. 132 grams. Est. £300 - £350.

57. A heavy Continental two handled bowl. Approx. 122 grams. Est. £40 - £50.

58. A circular two handled sweet dish with crown decoration. Est. £30 - £40.

59. A heavy Georgian barrel shaped mug with reeded decoration and gilt interior. London. Est. £80 - £100.



59

60. A good heavy engraved Continental goblet decorated with scrolls and leaves. Approx. 21 cms high, weighing approx. 300 grams. Est. £150 - £200.

61. A fiddle pattern caddy spoon with reeded bowl. London. By MC. Est. £30 - £50.

62. An early Georgian bright cut caddy spoon with fluted bowl. Est. £30 - £50.

63. A pair of fiddle pattern tablespoons with crested decoration together with another pair. London. Approx. 290 grams. Est. £50 - £60.

64. A small baluster shaped teapot with chase decoration. London. By HS. Approx. 267 grams. Est. £120 - £150.

65. A Russian Continental spoon together with a caddy spoon. Approx. 41 grams. Est. £20 - £30.

66. A four piece silver enamelled dressing table set with naval crown. Birmingham 1934. Est. £80 - £120.

67. An attractive set of four golfing buttons. London. By G&S Ltd. Est. £50 - £60.



67

68. A Victorian silver mounted glass pint mug on tapering support. Birmingham 1888. By BB. Est. £250 - £300.



68

- 69.** An unusual Continental ornate posy holder decorated with leaves and flowers. *Est. £250 - £300.*
- 70.** A large silver mounted cigar cutter. London 1911. By JCV. *Est. £60 - £80.*
- 71.** A. E JONES: A preserve jar / cream pail. Birmingham 1937, together with a spoon. *Est. £120 - £150.*
- 72.** A silver handbag flask with hinged top. Birmingham 1914. Approx. 9 cms tall. *Est. £120 - £150.*
- 73.** A silver and tortoiseshell trinket box mounted with a wreath. Birmingham 1918. *Est. £100 - £120.*
- 74.** A good quality châtelaine attractively decorated with flowers and leaves. Approx. 137 grams. London 1901. By William Cummings. *Est. £200 - £250.*
- 75.** A good quality Victorian châtelaine decorated with flowers and leaves mounted with bodkin case, tape measure, scissors, needle case and thimble holder. Birmingham. By ES&B. *Est. £450 - £500.*
- 76.** A good quality Continental silver gilt châtelaine mounted with engraved religious scenes supporting an extending pencil, aide memoire, needle case and thimble holder. *Est. £450 - £500.*
- 77.** An unusual Continental silver châtelaine decorated with flowers and swags mounted with embossed scissors, aide memoire, button hook, and thimble case. *Est. £450 - £500.*
- 78.** A heavy set of six plain tapered goblets. Birmingham 1971. By JC Ltd. Approx. 440 grams. *Est. £180 - £220.*
- 79.** An unusual fancy thread caddy scoop. Birmingham 1850. By George Unite. *Est. £50 - £60.*
- 80.** A silver mounted horn beaker of tapering form. London 1824. By SN. *Est. £70 - £80.*
- 81.** A small tapering christening mug on pedestal base. Birmingham by SJR. Approx. 58 grams. *Est. £20 - £30.*
- 82.** A set of six heavy rattail teaspoons. Edinburgh. By R&B. Approx. 81 grams. *Est. £25 - £30.*
- 83.** A small quantity of various teaspoons etc. Approx. 73 grams. *Est. £20 - £30.*
- 84.** A bag containing numerous silver bangles. Approx. 169 grams. *Est. £50 - £60.*
- 85.** An Antique Scottish fiddle pattern spoon punched RK three times. *Est. £50 - £60.*
- 86.** A good boxed Prince of Wales goblet on tapering support. London. By P. Ltd. Approx. 345 grams. *Est. £120 - £150.*
- 87.** A good quality hand painted miniature of a lady in silver gilt frame and fitted box. London. By GE&S. *Est. £140 - £180.*
- 88.** A heavy tapered tankard on pedestal base. Birmingham. By WH Ltd. Approx. 269 grams. *Est. £100 - £120.*
- 89.** Four heavy napkin rings with pierced decoration. Approx. 98 grams. *Est. £35 - £40.*
- 90.** A Georgian travelling apple corer, c. 1800. *Est. £150 - £200.*
- 91.** A good cherub decorated frame mounted with winged infants. 1896. By WC. *Est. £200 - £250.*
- 92.** An attractive embossed frame mounted with birds and scrolls. London 1898. By WC. *Est. £180 - £220.*
- 93.** A good quality embossed rectangular picture frame of scrolls and flowers. Approx. 20 cms high. *Est. £200 - £250.*
- 94.** A Continental figure of a dog with engraved body. Approx. 70 grams. *Est. £30 - £40.*
- 95.** A good quality Georgian six bar toast rack on tapered supports. London. By SG&W. Approx. 304 grams. *Est. £150 - £200.*
- 96.** A 1937 Maundy set. *Est. £20 - £30.*
- 97.** A heavy Eastern silver medallion. Approx. 125 grams. *Est. £30 - £50.*
- 98.** A "Central Bank of Kuwait" gold commemorative coin. Approx. 15 grams. *Est. £280 - £320.*
- 99.** A "Central Bank of Kuwait" 20th anniversary gold coin. Approx. 15 grams. *Est. £280 - £320.*
- 100.** A "Bahrain Hamad Town" gold coin. Approx. 15 grams in fitted box. *Est. £280 - £320.*



117

- 101.** A boxed set of four gold "Central Bank of Kuwait" presentation coins each weighing approx. 15 grams. *Est. £1200 - £1400.*
- 102.** A good quality Victorian tumbler cup with crested decoration. London. By A&S. Approx. 151 grams. *Est. £180 - £220.*
- 103.** A good quality Victorian sugar bowl with wavy rim. London. By WC. Approx. 415 grams. *Est. £160 - £180.*
- 104.** A good quality Russian silver gilt caddy spoon with engraved handle. Marked MR. *Est. £100 - £120.*
- 105.** A good quality shooting peg marker holder in the form of a twelve bore shotgun cartridge with lift off cover. Edinburgh. By GL&S. *Est. £200 - £250.*
- 106.** A small early Georgian caddy spoon. Birmingham. By C&B. *Est. £60 - £70.*
- 107.** An early Georgian caddy spoon with bright cut handle. Sheffield 1802. By MS & Co. *Est. £60 - £80.*
- 108.** A good quality Georgian wine funnel with pierced interior and reeded rim. London 1810. By CH. Approx. 77 grams. *Est. £150 - £200.*
- 109.** A good Georgian ladle with turned handle and pouring lip. London 1884. By JJ. *Est. £100 - £150.*
- 110.** A good early Georgian sugar caster of tapering form with pierced cover. London. By ID&M. Approx. 108 grams. *Est. £100 - £150.*

111. A E JONES: A heavy sauce ladle with textured body. Birmingham 1925. Approx. 230 grams. *Est. £300 - £350.*

112. KEITH TYSEN: A good quality three piece cruet consisting of pepper and salt of cube form together with matching vase. Sheffield 1979. Approx. 537 grams. *Est. £550 - £600.*

113. Two early Georgian bottom marked spoons. Approx. 90 grams. *Est. £60 - £80.*

114. A small silver pepper grinder. London 1912. By C&S. *Est. £70 - £80.*

115. An attractive pin cushion in the form of a stylish chair decorated with scrolls and leaves. Birmingham 1907. *Est. £180 - £220.*

116. A small unusual pin cushion in the form of a duck. Birmingham 1911. *Est. £180 - £220.*

117. A stylish circular Art Nouveau frame. Birmingham 1908. *Est. £60 - £80.*

118. A shaped Art Nouveau frame. Birmingham 1913. By JD&WD. Approx. 19 cms high. *Est. £120 - £150.*

119. A large plain rectangular picture frame. Birmingham 1921. Approx. 24 cms high. *Est. £80 - £120.*

120. An Art Nouveau frame decorated with stylised flowers. Birmingham 1907. Approx. 19 cms high. *Est. £140 - £180.*

121. A Continental caddy with rose finial and gilt interior. Approx. 306 grams. *Est. £100 - £150.*



121

122. An attractive bright cut basting spoon. London 1884. By JA&TS. Approx. 138 grams. Est. £80 - £100.

123. A heavy Russian fiddle pattern ladle. Approx. 197 grams. Est. £80 - £100.

124. A quantity of silver necklaces and bracelets. Approx. 112 grams. Est. £20 - £30.

125. Five various silver modern bracelets. Approx. 57 grams. Est. £20 - £30.

126. Two heavy silver charm bracelets. Approx. 83 grams. Est. £30 - £50.

127. Two silver cricketing fobs. Est. £40 - £50.

128. A heavy group of modern silver bracelets. Approx. 113 grams. Est. £30 - £50.

129. A bag containing silver and other brooches, bangles etc. Approx. 88 grams. Est. £30 - £50.

130. A large melon shaped teapot with rose finial and scroll decorated legs. London 1842. By SH&DC. Approx. 700 grams. Est. £200 - £230.



130

131. A good set of six silver tapered goblets with gilt interior. London 1973. Approx. 1100 grams. Est. £300 - £350.

132. A heavy large two handled trophy cup on sweeping pedestal base. Approx. 58 ounces. Est. £450 - £500.

133. An unusual Continental set of twelve dishes. Est. £100 - £150.

134. An attractive pair of arch topped miniature picture frames with hinge back. London 1905. Approx. 10.5 cms high. Est. £130 - £150.



131

135. An attractive pair of Chinese oval picture frames decorated with flowers and leaves. Approx. 9.5 cms high. Est. £100 - £120.

136. An oval plain picture frame with blue enamelled bow. Birmingham 1914. Approx. 10 cms high. Est. £70 - £80.

137. A small heart shaped picture frame embossed with scrolls and flowers. Birmingham 1904. Approx. 4.5 cms high. Est. £45 - £50.

138. A plain circular picture frame. Birmingham 1905. Approx. 6 cms high. Est. £30 - £40.

139. LAMBERTS OF LONDON: An Aladdin's lamp table lighter. London 1884. Est. £140 - £180.



139



140

140. A small half pint mug of tapering form and reeded handle. Birmingham. By FT. Approx. 145 grams. Est. £50 - £60.

141. A Georgian OE basting spoon. London. By RC. Approx. 102 grams. Est. £60 - £80.

142. A set of six Georgian bright cut teaspoons. London. By HB. Approx. 80 grams. Est. £20 - £30.

143. A heavy silver engine turned cigarette case. London. By SJ&R. Approx. 200 grams. Est. £40 - £50.

144. A modern tapered caster. Sheffield. By EB. Approx. 160 grams. Est. £40 - £50.

145. A small tealight holder and snuffer. Birmingham. By DY&Co. Approx. 63 grams. Est. £80 - £100.

146. An unusual military thread caddy spoon. London 1841. Est. £70 - £80.

147. A good quality heavy cast Irish cruet set consisting of four salts, four peppers and two mustards. Dublin 1957. By AC. Approx. 1900 grams. Est. £700 - £800.

148. A heavy cast paperweight in the form of a westernised sphinx on wavy base with inner steel liner, presented on 4th February to P. Howard 1891. London 1891. By Lambert of Coventry Street. Approx. 1600 grams. Est. £1000 - £1500.

149. A pair of good quality chop servers with engraved decoration. Sheffield 1905. By JH&P. Approx. 200 grams. Est. £120 - £150.



150

150. A good quality pair of presentation scissors with cast handles made in 9 carat. Approx. 28.2 grams. Est. £450 - £500.

151. A pair of Georgian Irish egg cups with reeded base. By JP. Est. £70 - £80.

152. A good Georgian waiter of circular form on hoof feet. Approx. 20 cms in diameter. London. By WP. Est. £300 - £350.

153. An attractive embossed Victorian sugar bowl with glass liner decorated with flowers. London. By GS. Est. £300 - £350.



154

154. A large rectangular Continental picture frame of King Mohammed Zahir Shah of Afghanistan in 1963 with personalised inscription and gold mount in fitted box. Approx. 34 cms x 27 cms. Est. £300 - £500.

155. An attractive Victorian style claret jug with embossed cover and pierced thumb piece. Sheffield. By WS&CS. Approx. 25 cms high. Est. £400 - £600.

156. STUART DEVLIN. A good modernistic silver and silver gilt letter opener in original case. Approx. 130 grams. Est. £250 - £300.

157. STUART DEVLIN. A good pair of candlesticks with modernistic stem and gilt shades. Approx. 36 cms high. Est. £500 - £600.

158. A stylish silver tapered bowl with fish handles. London. By F&F. Approx. 295 grams. Est. £50 - £60.



158

159. A large impressive Sheffield plated centrepiece decorated with flowers and scrolls. Est. £350 - £400.



159

160. A Sheffield plated mantle clock with silver dial. Est. £50 - £60.

161. An oak mounted plated two bottle tantalus. Est. £60 - £80.

162. A pair of OE bottom marked tablespoons. London. By IH. Est. £20 - £30.



160

163. A large plated desk inkwell with drawer to side. Est. £40 - £60.

164. A pair of good quality plated wine coasters embossed with vines. Est. £70 - £80.

JEWELLERY

165. A collection of silver and marcasite jewellery. Est. £20 - £30.

166. A stylish MOP bracelet together with one other. Est. £20 - £30.

167. A group of four modernistic silver brooches. Est. £20 - £30.

168. A 9 carat opal set ring together with a diamond and platinum set ring. Approx. 5.2 grams. Est. £50 - £60.

169. A long graduated string of amber beads. Approx. 48 grams. Est. £80 - £100

170. A good quality 9 carat gate bracelet with heart shaped padlock. Approx. 46.5 grams. Est. £250 - £300.

171. A pair of heavy gold emerald and diamond cluster earrings. Approx. 9.4 grams. Est. £60 - £80.

172. A small plain platinum wedding band. Approx. 2.7 grams. Est. £30 - £40.

173. A heavy high carat multi-gem bangle with hinge decoration. Approx. 28 grams. Est. £400 - £500.

174. An attractive amethyst and diamond square cluster ring in rose gold. Est. £450 - £500.

175. An Antique steel spinning fob with loop top.
Est. £80 - £100.

176. A heavy gold Georgian style guard chain with loop decoration. Approx. 52 grams. Est. £600 - £700.

177. A good quality finely carved jade sixteen panel necklace on fine link chain with ring clasp.
Est. £200 - £300.



177

178. Silver brooch, pendants etc. Est. £20 - £30.

179. An attractive pair of stylish silver earrings with ball decoration together with some silver cuff links. Est. £20 - £30.

180. Four silver and marcasite brooches.
Est. £20 - £30.

181. Two gold framed cameos together with one other. Est. £20 - £30.

182. A heavy amethyst and diamond oval brooch in modernistic gold frame. Approx. 13.4 grams.
Est. £120 - £150.

183. An Antique rose diamond 9 stone brooch in gold and silver mount. Approx. 15 grams.
Est. £350 - £400.



183

184. A heavy amethyst and pearl 9 carat clasp. Approx. 8.9 grams. Est. £60 - £80.

185. An attractive Edwardian enamel, pearl and diamond brooch set in gold. Approx. 3.5 cms across. Est. £400 - £500.



185

186. A pair of good quality rose diamond bangles of weave decoration. Est. £500 - £600.

187. An attractive circular diamond cluster ring in platinum mount. Est. £800 - £1000.

188. A pair of good quality tortoiseshell and gold inlay drop earrings of tapered design.
Est. £400 - £500.

189. An attractive opal and diamond seven stone ring in gold. Approx. 3.3 grams. Est. £30 - £40.

190. An oval cameo of a lady's head together with other sundry jewellery. Est. £20 - £30.

191. A gold framed cameo together with one other. Est. £30 - £40.

192. A collection of silver and marcasite brooches.
Est. £20 - £30.

193. A gold framed and agate brooch together with a 9 carat brooch. Approx. 15 grams.
Est. £60 - £80.

194. An attractive 9 carat pendant on fine link chain. Approx. 4.9 grams. Est. £40 - £60

195. Two 9 carat gem set brooches. Approx. 7.5 grams. Est. £50 - £60.

196. A large circular Scottish brooch with engraved decoration. Est. £120 - £150.

197. A good diamond nine stone princess cut ring in 18 carat gold. Approx. 6.5 grams. Est. £280 - £320.

198. A French paste bracelet mounted in silver with concealed clasp. Est. £120 - £150.

199. An Antique gold boat shaped brooch dated 1790. Est. £50 - £60.

200. An attractive Antique gold locket decorated with enamel diamonds and pearls with loop top. Est. £300 - £400.

201. An unusual hinged bangle mounted with a porcelain panel of a fox in two colour gold. Est. £400 - £500.

202. A good diamond five stone ring in platinum claw mount. Est. £600 - £700.



202

203. An attractive Edwardian emerald and diamond cluster ring in platinum mount. Est. £600 - £700.

204. An attractive pair of cultured pearl and diamond four stone drop ear studs, in white gold mount. Est. £400 - £450.

205. A small sapphire cluster ring together with a coral ring. Est. £20 - £30.

206. A small emerald and diamond circular cluster ring in claw mount. Est. £50 - £60.

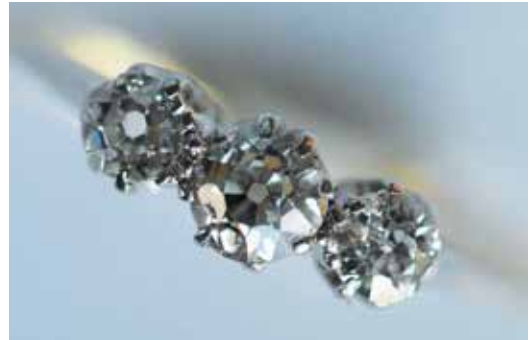
207. An 18 carat diamond circular cluster ring in two colour gold. Est. £100 - £150.

208. A pair of attractive turquoise and pearl drop earrings on suspension chains. Est. £30 - £50.

209. An attractive white gold half eternity ring set with diamonds. Est. £220 - £250.

210. An 18 carat sapphire and diamond oval cluster ring. Est. £100 - £150.

211. An attractive diamond three stone ring in 18 carat two colour gold claw mount. Est. £150 - £200.



211

212. An 18 carat modern pearl mounted half guard chain with ring clasp. Approx. 12.9 grams. Est. £150 - £200.

213. An attractive high carat mounted brooch set with aquamarine. Approx. 6.7 grams. Est. £120 - £150.

214. A heavy pair of diamond set cufflinks together with matching buttons. Approx. 22.5 grams. Est. £200 - £250.

215. A heavy pair of 18 carat heavy modernistic turquoise cufflinks. Approx. 12.8 grams. Est. £150 - £200.

216. A good string of pearl beads with sapphire and diamond clasp. Est. £100 - £150.

217. An attractive pair of platinum cocktail earrings in the form of a flower. Est. £200 - £250.

218. An attractive platinum bow brooch with reed decoration. Est. £250 - £300.

219. A group of five silver framed cameos. Est. £20 - £30.

220. A selection of silver mounted double clip and other brooches. Est. £20 - £30.

221. An oval opal and diamond cluster ring in 18 carat gold. Est. £80 - £120.

222. A small emerald and diamond oval cluster ring in 14 carat mount. Est. £40 - £60.

223. An 18 carat thirteen stone emerald and diamond cluster ring. *Est. £50 - £60.*

224. An Antique amethyst drop pendant mounted with five stones in claw mount supported with pearl set knife edge spacers on gold suspension chain. *Est. £450 - £500.*

225. A fine quality micro mosaic pendant/brooch mounted with a bird and floral leaves, together with matching drops. *Est. £900 - £1000.*

226. A circular micro mosaic brooch in the form a beetle. *Est. £400 - £500.*

227. A small 14 carat cocktail ring in claw mount. Approx. 6 grams. *Est. £700 - £800.*

228. A rose diamond brooch dated 1891 in gold. Approx. 3 grams. *Est. £40 - £50.*

229. Two gold and diamond set cluster rings. Approx. 4.7 grams. *Est. £40 - £50.*

230. An attractive diamond and pearl flower decorated brooch with outstretched petals. *Est. £100 - £150.*



230

231. A heavy 14 carat anchor link necklace. Approx. 41 grams. *Est. £500 - £600.*

232. A heavy pair of 22 carat emerald set cufflinks. Approx. 16.5 grams. *Est. £280 - £320.*

233. A pair of 14 carat mounted ear pendants inset with pearl. Approx. 8.6 grams. *Est. £50 - £60.*

234. A small silver Scottish brooch together with a gold watch. *Est. £20 - £30.*

235. A heavy 18 carat pearl mounted bangle with concealed clasp. Approx. 55 grams *Est. £800 - £1000.*



235

236. A long string of pearl beads. *Est. £30 - £40.*



236

237. A small diamond and platinum mounted cocktail watch with engraved decoration. *Est. £150 - £200.*

238. A small diamond and platinum crossover ring in claw mount. *Est. £700 - £800.*



239

239. A diamond single stone ring, the rectangular step cut diamond measuring approx. 1.15 carats within a four claw setting and emerald cut shoulders in platinum. *Est. £2000 - £2500.*

240. A pair of attractive silver and seed pearl cocktail earrings. *Est. £100 - £150.*



240

241. A good quality 18 carat Russian two strand guard chain set with ruby and pearl slide. Approx. 3.9 grams. *Est. £250 - £300.*

242. A heavy 9 carat Victorian garnet and pearl brooch with locket back. Approx. 17 grams. *Est. £80 - £100.*

243. A Chinese yellow jade pendant with loop top. *Est. £30 - £50.*

244. A pair of 19th Century satsuma earrings. *Est. £20 - £30.*

245. A platinum mounted emerald and diamond half eternity ring. Approx. 2.2 grams. *Est. £150 - £200.*



246

246. A good emerald cut cluster ring in 18 carat white gold setting and claw mount, the central stone weighing approx. 1 carat. *Est. £2000 - £2500.*

247. A heavy 18 carat hard stone cameo of a head. Approx. 13.9 grams. *Est. £200 - £250.*

248. A good two strand pearl necklace with sapphire, diamond and pearl gold clasp. *Est. £150 - £200.*

249. A graduated string of freshwater pearls with 18ct gold clasp. *Est. £60 - £80.*

250. A string of agate beads mounted with 9 carat ball clasp. *Est. £30 - £50.*



251

251. A good double string of pearl beads with oval mounted diamond cluster clasp. Approx. 3cm across. Est. £500 - £700.

252. A good long string of jade beads with ring clasp. Est. £150 - £200.

253. A good quality Art Deco diamond ring mounted with two large emerald cut stones, set in platinum. Est. £3000 - £3500.



253

254. A pair of large diamond daisy head cluster earrings in platinum setting. Over 7 carats in total. Est. £8000 - £9000.



254

255. A stylish coral and onyx panel bracelet designed with eight panels and concealed clasp. Est. £3500 - £4500.

256. A silver curb link charm bracelet together with two other silver bracelets. Approx. 48 grams. Est. £30 - £40.

257. A stylish silver bracelet together with a charm bracelet. Approx. 49 grams. Est. £20 - £30.

258. A group of various 9 carat pendants on fine link chains. Approx. 7.6 grams. Est. £60 - £80.

259. An attractive rose diamond fringe necklace with cluster clasp set in gold. Est. £450 - £500.

260. An attractive silver enamelled heart shaped locket with loop top. Est. £20 - £30.



260

261. A pair of 9 carat engraved cufflinks. Approx. 6.3 grams. Est. £60 - £70.

262. A good quality 18 carat Antique chaste wedding band. Approx. 5.8 grams. Est. £120 - £150.

263. A heavy 18 carat pearl mounted guard chain. Approx. 50 grams. Est. £650 - £700.



264

- 264.** An attractive 14 carat diamond and pearl pendant with loop top. *Est. £200 - £250.*
- 265.** An 18 carat spinning fob with rope twist decoration. *Est. £140 - £160.*
- 266.** A 9 carat pendant on fine link chain together with one other. Approx. 5.2 grams. *Est. £40 - £60.*
- 267.** An attractive 9 carat amethyst and pearl brooch with rope twist decoration. Approx. 4.1 grams. *Est. £40 - £60.*
- 268.** A heavy quartz pendant set in 9 carat on fine link chain. Approx. 4.5 grams. *Est. £40 - £60.*
- 269.** A diamond white gold full eternity ring with chaste decoration. *Est. £150 - £200.*
- 270.** A heavy sapphire and diamond oval cluster ring in 18 carat gold. *Est. £90 - £120.*
- 271.** A heavy 18 carat two colour gold cluster ring. *Est. £90 - £120.*
- 272.** A pair of heavy 9 carat cufflinks in the form of a letter 'D'. *Est. £100 - £120.*
- 273.** An oval coral cameo of a lady's head in jet frame. *Est. £60 - £70.*
- 274.** A small diamond two colour gold ring. Approx. 3.5 grams. *Est. £40 - £50.*
- 275.** A 14 carat diamond mounted ring. *Est. £30 - £40.*
- 276.** A graduated string of natural pearl beads. *Est. £50 - £60.*

- 277.** A small Russian cross with enamel decoration and loop top. *Est. £50 - £60.*
- 278.** A small sapphire and diamond three stone ring in 18 carat two colour gold mount. *Est. £80 - £100.*
- 279.** A quantity of silver and marcasite brooches. *Est. £20 - £30.*
- 279A.** A quantity of silver and marcasite brooches. *Est. £20 - £30.*
- 280.** An attractive platinum brooch in the form of a basket of flowers inset with rubies, sapphires and demantoid garnets, the basket mounted with five large collet set diamonds with pierced decoration. *Est. £3000 - £3500.*



280

- 281.** A gold framed cameo of a lady together with various others. *Est. £20 - £30.*
- 282.** A silver charm bracelet together with other bracelets etc.
- 283.** Five various marcasite brooches. *Est. £20 - £30.*
- 284.** An 18 carat white gold full eternity ring. *Est. £100 - £120.*
- 285.** A good wide diamond full eternity ring in pierced band. *Est. £800 - £1000.*
- 286.** An attractive sapphire and ruby five stone cluster ring in 18 carat. *Est. £60 - £80.*
- 287.** An opal and diamond seven stone half hoop ring in 18 carat mount. *Est. £150 - £200.*
- 288.** A stylish silver and paste set cluster ring. *Est. £80 - £100.*

289. A heavy 9 carat pearl and turquoise fancy link bracelet with concealed clasp. Approx 12.8 grams. Est. £120 - £140.

290. A silver bracelet, brooch, earrings etc. Est. £20 - £30.

291. A stylish silver mounted necklace together with three others. Est. £30 - £40.

292. Three large silver stylish brooches. Est. £20 - £30.

293. Two good diamond set rings in gold. Approx. 4.7 grams. Est. £80 - £120.

294. A heavy rose gold and green stone oval signet ring. Est. £80 - £100.

295. A pair of heavy white gold diamond set cufflinks. Est. £350 - £400.

296. An attractive onyx and diamond pierced brooch. Est. £200 - £250.

297. A group of three gold gem set brooches. Est. £60 - £70.

298. A small diamond five stone ring in 18 carat and platinum. Est. £60 - £80.

299. A diamond and sapphire five stone half hoop ring in 18 carat. Est. £100 - £150.

300. An attractive 18 carat half hoop ring. Est. £90 - £120.

301. A coral twig necklace with gold barrel clasp. Est. £20 - £30.

302. A small diamond single stone gypsy set ring in white gold. Approx. 3.4 grams. Est. £200 - £250.

303. A small seed pearl cross on gold fine link chain. Est. £20 - £30.

304. An attractive Edwardian diamond brooch in white gold. Est. £100 - £150.

305. A small Antique rose diamond brooch in gold. Est. £30 - £40.

306. An attractive small diamond circular cluster ring in 18 carat and platinum mount. Est. £200 - £250.



307

307. A diamond single stone ring. The brilliant cut stone weighing approx. 1.39 carat within a six claw setting of 18 carat gold. Est. £3800 - £4200.

308. An 18 carat and diamond six stone line bracelet with concealed clasp. Est. £450 - £500.

309. An Antique Continental rose diamond rectangular cluster brooch engraved with flowers to back. Est. £350 - £400.

310. A rose diamond high carat locket with loop top. Approx. 3.5 cms in length. Est. £700 - £800.

311. A large green stone ring in claw mount. Est. £80 - £120.

312. A good quality Scottish agate bracelet with banded agate padlock and hair back. Est. £400 - £450.

313. A good quality carved ivory cameo of a lady in high relief. Est. £380 - £420.

314. An attractive stylish pink paste buckle. Est. £45- £55.

315. A group of various silver and other rings. Est. £20 - £30.

316. An enamelled butterfly together with a garnet brooch etc. Est. £20 - £30.

317. A pearl and diamond rectangular bar brooch on gold knife edged spacer. Est. £200 - £250.

318. A gold and citrine spider brooch in box. Est. £50 - £60.

319. An attractive Edwardian opal and rose diamond triple cluster ring in heavy 18 carat claw mount. Est. £700 - £800.

320. A good gold military brooch with crown top, demantoid garnet surround and initialled centre. Est. £300 - £350.

321. A 9 carat Scottish brooch with agate decoration. Est. £50 - £60.

322. A gold and red stone set ring in engraved mount. Est. £400 - £500.

323. A pink topaz and rose diamond brooch in white gold mount. Est. £50 - £60.

324. An amethyst and pearl hinged bracelet with concealed clasp in 15 carat. Est. £400 - £500.

325. Two gold and opal mounted rings. Approx. 6.2 grams. Est. £50 - £60.

326. Two 9 carat gem set cluster rings. Approx. 6 grams. Est. £50 - £60.

327. A pair of silver and hard stone earrings with engraved decoration and loop tops. Est. £100 - £150.

328. A good quality heavy 9 carat gate bracelet mounted with peridots and frosted links. Approx. 20.4 grams. Est. £600 - £700.

329. A large high carat hard stone cameo of a lady's head with floral embossed gold frame. Approx. 5.5 cms high. Est. £500 - £600.

330. A small graduated string of amber beads. Est. £30 - £40.

331. An Antique pearl and diamond circular cluster ring in two colour gold. Est. £300 - £350.

332. A large turquoise and rose diamond cluster ring in 18 carat. Est. £450 - £500.

333. An 18 carat sapphire and diamond twist ring. Est. £60 - £80.

334. A pair of 18 carat butterfly ear studs. Est. £100 - £120.

335. A pink coral and cameo brooch. Est. £50 - £60.

336. A 9 carat Art Nouveau oval brooch. Est. £80 - £100.

337. A 9 carat diamond pendant together with matching bracelet. Est. £220 - £250.

338. An 18 carat sapphire and diamond pendant. Est. £150 - £200.

339. A large diamond cluster ring in 18 carat white gold with large central stone. Est. £800 - £1000.

340. A bundle of four heavy gold stone set rings. Approx. 7.9 grams. Est. £60 - £80.

341. A group of 9 carat gem set rings. Approx. 4.3 grams. Est. £35 - £40.

342. A small 15 carat flag brooch with enamel decoration. Approx. 2.5 grams. Est. £30 - £40.

343. A small diamond single stone ring in platinum mount. Est. £300 - £400.

344. A large oval cameo of a village scene with scroll decorated frame. Approx. 7 cms across. Est. £180 - £220.

345. A stylish silver hat pin. Est. £35 - £40.

346. A good quality amethyst necklace in pierced frame with concealed clasp. Est. £700 - £900.

347. An unusual gold brooch in the form of a dodo with diamond body. Est. £450 - £500.

348. A gold garnet and pearl lozenge shaped ring. Est. £20 - £30.

349. A silver MOP cameo bracelet. Est. £30 - £40.

350. Two lockets; one with enamel cross and the other with pearl cross. Est. £40 - £50.

351. A silver and amethyst line bracelet with concealed clasp. Est. £35 - £45.

352. Three pairs of silver stone set earrings. Est. £40 - £50.

353. An attractive sapphire and diamond crossover bangle with concealed clasp and engraved decoration. Approx. 13 grams. Est. £350 - £400.



353

354. A small circular rose diamond locket with loop top. Est. £150 - £200.

355. A 14 carat three stone ring in claw mount. Approx. 3.4 grams. Est. £40 - £50.

356. An 18 carat garnet and rose diamond three stone ring. Approx. 3.5 grams. Est. £50 - £60.

357. An unusual gold and crystal mounted ball watch. Est. £180 - £220.

358. A good quality sapphire and diamond oval cluster ring in platinum claw setting. Est. £900 - £1100.



358

359. A 9 carat white gold ring. Est. £45 - £55.

360. A collection of 9 carat gem set ear studs. Est. £30 - £40.

361. Six heavy silver single stone rings in claw mount. Approx. 23 grams. Est. £30 - £40.

362. A pair of silver and turquoise earrings together with a ring etc. Est. £20 - £30.

363. A heavy bundle of six silver gem set rings. Est. £20 - £30.

364. A heavy bundle of silver gem set rings. etc. Est. £25 - £30.

365. A heavy collection of various silver gem stone rings. Est. £20 - £30.

366. An attractive Edwardian sapphire and diamond ring in claw mount. Est. £200 - £250.

367. A turquoise and diamond marquise shaped ring in claw mount. Est. £350 - £400.



368

368. SUFFRAGETTE. An attractive silver pendant with ring clasp and suspension chain. Est. £180 - £220.

369. KNOLL & PREGIZER. A good quality silver Art Deco bracelet constructed of six silver panels in CARTIER case. Est. £300 - £400.



369

370. A large stylish French gold brooch in rose gold mounted with two rows of diamonds. Approx. 29 grams. Est. £500 - £600.

371. A 9 carat Antique garnet signet ring. Approx. 4.8 grams. Est. £40 - £50.

372. A pearl single stone ring in claw mount. Approx. 3.1 grams. Est. £50 - £60.

373. A pair of impressive diamond cocktail earrings of graduated form with hinged panels to scroll base and drop mounts. Approx. 5.5cms long. Est. £2000 - £2500.

374. A large Antique locket with crystal centre and hinged back. Approx. 4.5 cms long. Est. £250 - £300.

375. CARTIER. An attractive diamond line bracelet designed as a row of 36 old European cut stones mounted in platinum with signed and numbered concealed clasp and safety clip. Approx. 16.5 cms long. Est. £10000 - £12000.



375

376. MARIO SABA. A heavy 18 carat gold brooch set with large pearl surrounded by three diamonds with original receipt. Approx. 27.8 grams. Est. £500 - £600.

377. A large oval sapphire and diamond cluster ring in attractive 18 carat claw mount. Est. £600 - £800.

378. A pair of diamond single stone brilliant cut ear studs in four claw setting. Approx. 1 carat total weight. Est. £1000 - £1200.

379. A good pair of high carat Antique drop earrings, attractively enamelled with blue and white flowers in high carat gold. Est. £400 - £600.

380. A stylish gold brooch with large central stone surrounded by numerous old cut diamonds in gold mount. Est. £900 - £1100.

381. A single row natural pearl necklace with graduated row of 118 pearls measuring from 1.7 - 6.0 mm approx. with rose diamond mounted gold clasp. GCS certificate dated 26.1.16. Est. £2000 - £2500.

382. A white gold and diamond set band. Est. £80 - £120.

383. A bag containing silver bangles, necklaces etc. Est. £50 - £60.

384. A heavy gold and diamond V shaped ring with large central stone. Approx. 13 grams. Est. £300 - £400.



380

385. A heavy 9 carat Victorian garnet and pearl locket brooch. Est. £120 - £150.

386. A good diamond cluster with pavé set shoulders supported by a four claw central stone. Approx. 1.5 carats. Est. £4000 - £5000.

387. A pair of Antique paste buckles. Est. £200 - £250.



387

388. CARTIER. A lapis lazuli and emerald tortoise brooch, c. 1950. Textured body with pear-shaped faceted emerald eyes and engraved shell set with cabochon lapis accents. Signed Cartier and numbered 20458. Approx. 3.7 cm. Est. £2500 - £3000.

389. A diamond ring. The central circular cut diamond measuring approx. 2.85 carats supported by four claws and heavy diamond pavé surround to triple banded shoulders. Est. £15000 - £20000.



389



390

WATCHES

390. ROLEX. A lady's 9 carat wrist watch on mesh strap. Est. £150 - £200.

391. A gilt Elgin pocket watch together with one other. Est. £60 - £80.

392. ROLEX. A gent's oyster perpetual datejust with gold and steel links. Est. £1800 - £2000.

393. ROLEX. A gent's stainless steel oyster perpetual datejust with MOP dial and diamond numerals on stainless steel strap. Est. £1200 - £1500.



393



394

394. A heavy lady's Antique 18 carat wrist watch on a 9 carat mesh strap. Approx. 29 grams. Est. £180 - £220.

395. A gent's silver open face pocket watch with white enamel dial. Est. £30 - £40.

396. A small 18 carat fob watch with white enamelled dial. Est. £60 - £80.

397. An attractive diamond encrusted cocktail watch in platinum. Est. £500 - £600.

398. FAVRE-LEUBA, Geneva. A good quality 18 carat gent's wrist watch with mesh strap and concealed clasp. Approx. 78.8 grams. Est. £1200 - £1400.



398

399. A good quality tungsten and gold mounted wrist watch with diamond mounts. Est. £150 - £200.

400. A string of dark cherry amber beads. Approx. 54 grams. Est. £100 - £150.

PAINTINGS AND
WORKS OF ART



- 401.** WILLIAM PATTEN: "Portrait of a Gentleman". Approx. 31 cms x 23 cms. Est. £100 - £150.
- 402.** WILLIAM PATTEN: "Portrait of a Lady", in gilt frame. Approx. 31 cms x 23 cms. Est. £100 - £150.
- 403.** Oil on copper. A portrait of a gentleman. Approx. 39 cms x 24 cms. Unsigned. Est. £30 - £50.
- 404.** An oil portrait of a seated clerk with quill, in gilt and ebony frame. Approx. 21 cms x 25 cms. Est. £150 - £200.
- 405.** An oval portrait of a young girl with wavy hair and daisies, in gilt frame. Approx. 41 cms x 30 cms. Est. £100 - £150.
- 406.** G SHAW: A moorland landscape with figures and cattle on bridge, in gilt frame. Approx. 36 cms x 59 cms. Est. £100 - £150.
- 407.** G SHAW: A lady on river's edge with moorland landscape, in gilt frame. Approx. 35 cms x 59 cms. Est. £100 - £150.
- 408.** G H JENKINS: An attractive river scene with overhanging trees. Signed and dated 1801. Approx. 59 cms x 90 cms. Est. £450 - £500.



408

- 409.** G H JENKINS: A moorland stream with fishermen. Approx. 34 cms x 59 cms. Est. £250 - £300.
- 410.** ENGLISH SCHOOL: Figures by a windmill in an attractive gilt frame. Approx. 44 cms x 29 cms. Est. £150 - £200.

- 411.** Watercolour of a gent herding sheep in an English country lane. Approx. 41 cms x 52 cms. Est. £50 - £80.
- 412.** Watercolour of a country village scene. Approx. 38 cms x 50 cms. Est. £50 - £80.
- 413.** An Oriental sampler of a bird on a blossom branch. Approx. 43 cms x 96 cms. Est. £60 - £80.
- 414.** An Oriental tapestry of a bird on a reed in a lily pond. Approx. 35 cms x 85 cms. Est. £60 - £80.
- 415.** T M RICHARDSON RWS: "Under Sunny Skies". Approx. 64 cms x 41 cms. Est. £450 - £500.
- 416.** A porcelain panel of young Queen Victoria in gilt frame. Approx. 30 cms x 22 cms. Est. £80 - £100.
- 417.** A large framed silk scarf entitled "Departure of the pilgrim fathers". From Plymouth. Approx. 76 cms x 76 cms. Est. £50 - £70.
- 418.** A pair of gilt framed portrait prints. Approx. 26 cms x 21 cms. Est. £40 - £60.
- 419.** TOM ROWDEN: Shepherds and sheep by stream. Approx. 21 cms x 50 cms. Est. £150 - £200.
- 420.** SARAH STUD: Three tomatoes on a windowsill. Approx. 45 cms x 32 cms. Est. £100 - £150.
- 421.** PETER KENNELLY: "Corvus Corax". 1991. Charcoal and liquitex on board. Approx. 7cms x 11 cms. Est. £100 - £150.



422

422. PETER KENNELLY: "Source". 1991. Oil on canvas. Approx. 20 cms x 20 cms. *Est. £100 - £150.*

423. PETER KENNELLY: "England". 1991. Oil on board. Approx. 19 cms x 15 cms. *Est. £200 - £250.*

424. HERMIONE HAMMOND: "Chickens". Approx. 13 cms x 18 cms. *Est. £30 - £40.*

425. HERMIONE HAMMOND: "Winter Flowers". Approx. 65 cms x 49 cms. *Est. £100 - £150.*

426. MEG DAWSON: "Carnival Train". Approx. 29 cms x 22 cms. *Est. £20 - £30.*

427. AFTER ROY LICHTENSTEIN (American, 1923-1997): Wrapping paper screenprint, laid onto board, unknown edition size, apparently four pieces joined together. Approx. 153 cms x 153 cms. *Est. £300 - £400.*

428. AFTER G WEBSTER: A pair of framed and glazed marine prints. Approx. 59 cms x 45 cms. *Est. £200 - £250.*

429. JOHN DUGMORE: "St. Michael's Mount". Approx. 29 cms x 22 cms. *Est. £30 - £40.*

430. FR. ETCHERS: A street scene in Rye. Approx. 32 cms x 23 cms. *Est. £20 - £30.*

431. An etching of Borthwick Castle. Approx. 22 cms x 15 cms. *Est. £20 - £30.*

432. Two framed and glazed Chinese pictures. *Est. £20 - £30.*

433. No Lot.

434. WILLIAM OLIVER: Oil on canvas. A young girl under a tree with parasol. Approx. 58 cms x 43.5 cms. *Est. £800 - £1000.*

435. HAMILTON CHAPMAN: Watercolour of a lake scene. Approx. 52 cms x 33 cms. *Est. £50 - £60.*

436. A portrait of a gent in seated position. Unsigned. Approx. 40 cms x 30 cms. *Est. £30 - £40.*

437. WILLIAM HOLE: Oil on canvas of figures on a river. Signed and dated. Approx. 44 cms x 34 cms. *Est. £300 - £500.*

438. FRANK PANABAKER (A.R.C.A.): "Blue Mountains, South of Collingwood, Ontario". Painted October 1954 in white frame. Signed. Approx. 70 cms x 55 cms. *Est. £500 - £600.*

439. FRANK PANABAKER (A.R.C.A.): "October morning, North Hastings, Ontario". Dated 21.2.1955. Signed. Approx. 49 cms x 39 cms. *Est. £500 - £600.*

440. HENRY BARRAUD: Portrait of "The Hon. William Huskisson, Colonial Secretary, MP. 1770 - 1830" in gilt frame. Oil on canvas. Approx. 73 cms x 61 cms. (William Huskisson is best known as being the first person to have been killed by a train) *Est. £300 - £500.*

441. F J WIDGERY: Tide on the turn at rivermouth. Approx. 27 cms x 18 cms. *Est. £200 - £250.*

442. An oval gilt framed oil portrait of a gent with swept back hair. Approx. 15 cms x 12 cms. *Est. £50 - £60.*

443. An oval portrait of a gent with swept back hair and cravat. Approx. 18 cms x 13 cms. *Est. £60 - £80.*



443

444. An attractive portrait painting of a lady with rosy cheeks and crossed arms in maple frame. Approx. 13 cms x 11 cms. *Est. £100 - £150.*



444



445

445. A good quality brass framed portrait of a lady of title and a young child. Labelled to reverse: "DUCHESS OF SUTHERLAND, THE LADY ELIZABETH AFTER THE DUCHESS OF ARGYLE BY KIRK NERIN. SIGNED ON BACK OF PORCELAIN AFTER SIR T. LAWRENCE". Approx. 10 cms X 8.5 cms. Est. £200 - £250.

446. A pair of oval engravings. Approx. 14 cms x 10 cms. Est. £30 - £50.

447. A pair of early 19th Century watercolours in ebony frame. Approx. 11 cms. Est. £30 - £50.

448. A good pair of miniatures in attractive brass frame and ebony mount. Approx. 10 cms x 8 cms. Est. £100 - £150.

449. A rectangular portrait of a gent in gilded mount. Approx. 13 x 11. Est. £40 - £60.

450. A framed miniature of "Robertine Torteau, La Marquise D'Orvilliers in the manner of Jacques-Louis David". Approx. 15.5 cms cms x 11 cms. Est. £100 - £150.



453

451. A pair of square engravings in ebony frames. Approx. 7.5 cms x 7.5 cms. Est. £30 - £50.

452. A pair of oval painted miniatures of Napoleon and Josephine. Est. £40 - £50.

453. An early miniature of a girl seated by an urn with white bonnet. Approx. 10 cms x 8 cms. Est. £100 - £150.

454. An early painted porcelain panel of Anne Marie Louise d'Orléans. Signed Mme Verdier. Approx. 19 cms x 14 cms. Est. £250 - £300.

455. An attractive German porcelain panel of figures smoking in a doorway. Signed and dated. Approx. 40 cms x 30 cms. Est. £150 - £200.



457

456. A painted porcelain plaque entitled "Gustav Adolf" to reverse in oak frame. Signed Rob (ert) Pilz to centre right. Shield ("Beehive") mark. Approx. 12 cms x 10 cms. Est. £150 - £200.

457. A painted porcelain plaque entitled "Milton" to reverse in oak frame. Signed Rob (ert) Pilz to centre right. Shield ("Beehive") mark. Approx. 12 cms x 10 cms. Est. £150 - £200.

458. An attractive painted oval portrait of a lady in velvet border and gilt frame. Approx. 12 cms x 8 cms. Est. £80 - £100.

459. A rectangular drawing of Henry Mount born at Howfield 1794 in gilt frame. Approx. 13 cms x 10 cms. Est. £50 - £80.

460. A well painted miniature of a gent with green jacket in an attractively engraved brass frame. Approx. 6 cms x 7.5 cms. Est. £200 - £250.



469

461. A small rectangular painting of a girl with white bonnet and curly hair. Approx. 9 cms x 7 cms. Est. £30 - £40.

462. A 19th Century miniature of a young lad with ginger hair stroking a rabbit. Approx. 9 cms x 7 cms. Est. £100 - £150.

463. A small portrait of a child with swept back hair and rosy cheeks. Approx. 9 cms x 7 cms. Est. £100 - £150.

464. An oval 18th Century painting on glass of boy in gilt frame. Approx. 8 cms x 6.5 cms. Est. £80 - £120.

465. A good quality gold framed miniature of a gent with hair back and pearl decoration. Approx. 6.5 cms x 5 cms. Est. £350 - £400.

466. A finely painted miniature of a gent in gold frame with loop top; hair and seed pearl back. Approx. 6 cms x 5 cms. Est. £350 - £400.

467. An oval miniature of a girl. Est. £20 - £30.

468. H. CISZ: signed print 'Manhattan Morning'. - No. 1 of 20'. Approx. 25 cms x 25 cms. Est. £200 - £250.

469. GODEFROY JADIN: Watercolour of still life with hanging game in village kitchen. Signed and dated 1832. Unframed. Approx. 28 cms x 24 cms. Est. £300 - £400.

470. A collection of 10 botanical prints from Flora Londinensis. Est. £80 - £100.

471. An oval Continental porcelain panel of a young girl with clenched hands in attractive gilded frame. Approx. 12.5 cms x 9.5 cms. Est. £150 - £200.

472. A rectangular painted panel of a girl in embossed gilt frame. Approx. 11.5 cms x 8.5 cms. Est. £100 - £150.

473. A good quality rectangular miniature of a girl in off-the-shoulder dress and curled hair in embossed brass frame. Approx. 11 cms x 9 cms. Est. £300 - £350.

474. A 19th Century rectangular painting of a girl in blue dress with ginger hair in seated position with floral brass border. Approx. 7 cms x 9 cms. Est. £300 - £350.

475. A 19th Century painting of a girl with white dress in gilt frame. Approx. 10 cms x 8 cms. Est. £80 - £120.

476. An Antique painting of a girl with reef and ebony frame. Approx. 8 cms x 6.5 cms. Est. £50 - £80.

477. An attractive oval watercolour of a lady with blue sky background. Approx. 10.5 cms x 8.5 cms. Est. £250 - £300.

478. A small charming rectangular watercolour of a girl with blue frilly dress and blue sky background. Approx. 9 cms x 7 cms. Est. £250 - £300.



478

479. An attractive rectangular miniature of a girl with curly hair and red dress in cast frame decorated with birds and scrolls. Painted by T. George. London 1828. Approx. 10.5 cms x 8.5 cms. Est. £300 - £350.

480. AGNES MILLER PARKER (1895 - 1980): Six various wood engravings depicting Richard II. All signed in pencil, and dated 1939. All unframed. Est. £300 - £400.

481. HENRY MACBETH - RAEBURN (British, 1860 - 1947). Etching of a waterside scene with castle to background. Signed in pencil. Unframed. Approx. 12.5 cms x 17.5 cms. Est. £60 - £80.

482. "The Ruined Fountain" Approx. 23 cms x 30 cms. Pencil writing to reverse: " painted for J J Chalon RA 1778 - 1854)". Unsigned to picture. Framed with footer: JJ CHALON RA. Est. £130 - £150.

483. HERMIONE HAMMOND: "Hellebore". Approx 27 cms x 27 cms. Signed and numbered 5/82. Framed and glazed. Est. £70 - £80.

484. W. COLLINGWOOD: A framed a glazed watercolour entitled to reverse, " Sunset, Snowdon, W Collingwood, 1873". Initial signed to bottom left, WC, and dated 1878 on picture. Approx. 18 cms x 13 cms. Est. £60 - £80.

485. FLEA BARCLAY: "Crackle bowls and vases." Approx. 100 cms x 120 cms. Oil on canvas. (Flea Barclay is a local Devon abstract artist, who has been shortlisted to exhibit at the Royal Academy in the summer). Est. £300 - £500.



485

485A. FLEA BARCLAY: "The Dolphin and the Unicorn". Approx. 100 cms x 100 cms. Oil on canvas. Est. £300 - £500.

486. GRAHAM RICH: "Marks to Starboard". Signed artist's proof on aluminium, dated 2013. One of only 8 limited edition prints of an original work painted on the wall of The Salutation Inn, Topsham. Provenance: Belgrave St. Ives. Approx. 110 cms x 115 cms. Est. £150 - £200.



486

487. SANDRA BLOW: A study in yellow. Signed artist's proof. Approx. 70 cms x 70 cms. Est. £100 - £150.

488. SUNDAY B MORNING: "Marilyn Monroe" In perspex frame. Approx. 92 cms x 92 cms. Est. £100 - £150.

489. MIMMO ROTELLA: Five large and one smaller signed décollages; all Marilyn Monroe. All framed and glazed. Est. £300 - £350.

490. A Roy Lichtenstein poster: "Still Life with Cheese." Approx 100 cms x 86 cms. Est. £70 - £80.

491. Two large framed and glazed posters: "Jane Fonda: Barbarella", and "Woodstock". Approx. 116 cms x 72 cms each. Est. £100 - £150.

492. Large framed and glazed poster of a young Mick Jagger taken by David Bailey. Approx. 96 cms x 87cms. Est. £70 - £80.

493. SIGMUND POLLITZER: Black and white ink and wash. Signed. Framed and glazed. Est. £80 - £100.

494. JOSE MAIA: "Vincent Starting Another Fourteen Sunflowers in a Vase" (1989/90). Oil on canvas. Approx. 93 cms x 72 cms. Est. £1500 - £2000.



COLLECTABLES & PORCELAIN

495. A lacquered fan in case. *Est. £30 - £50.*

496. A collection of various MOP and other fans. *Est. £30 - £40.*

497. A handmade Edwardian child's coat. *Est. £30 - £50.*

498. A collection of lace and other materials. *Est. £60 - £80.*

499. A Carton shawl, a lace dress, a needlekin stole, etc. *Est. £150 - £200.*

500. A bag of Antique French linen. *Est. £40 - £50.*

501. A small carriage clock on bracket feet. *Est. £30 - £50.*

502. LIBERTY & Co: A stylish pewter mantle clock with blue enamelled dial. *Est. £400 - £600.*



502

503. LIBERTY & Co: A pair of pewter stylish vases. *Est. £150 - £200.*

504. A large plated carriage clock with engraved dial and bracket feet. *Est. £40 - £60.*

505. An attractive French brass mounted mantle clock with silver dial and engraved pedestal base. *Est. £300 - £350.*

506. A large mantle clock with glazed front and etched glass. *Est. £80 - £100.*

507. A stylish alabaster mantle clock with silver dial by Miller & Son, London. *Est. £80 - £100.*

508. A 19th Century Indian chess set. *Est. £250 - £300.*

509. An early 20th Century English turned chess set. *Est. £70 - £80.*



505

510. An early Eastern painted miniature of a hunting scene in inlaid frame. *Est. £30 - £50.*

511. A painted MOP pendant of a hunting scene in inlaid frame. *Est. £20 - £30.*

512. A wooden mounted three drawer telescope by Dollond of London. *Est. £20 - £30.*

513. An old Taylor Forbes iron. *Est. £10 - £15.*

514. A large chrome automobile mascot "The Royal Automobile Club". *Est. £40 - £50.*

515. A stylish brass figure of a lady on alabaster mount. Signed Chiparus. *Est. £40 - £50.*

516. An old trumpet in leather case. *Est. £30 - £50.*

517. An unusual leather double shotgun case with hinged top. *Est. £80 - £100.*



517



515

518. A collection of good glass intaglios.
Est. £600 - £700.

519. A small rectangular Baccarat glass box mounted with a bulldog, together with an ashtray.
Est. £30 - £50.

520. Small turned ivory dressing table box in the form of an apple. Est. £20 - £30.

521. A small novelty brass lighter decorated with aircraft. Est. £20 - £30.

522. A stylish brass and copper kettle by Benson, together with a hot water jug. Est. £20 - £30.

523. A small brass epergne base decorated with flowers and swags. Est. £20 - £30.

524. A walnut writing slope with brass inset top.
Est. £30 - £40.

525. An attractive walnut bridge box with brass mounts. Est. £100 - £120.

526. A good walnut and brass mounted ink well with hinged top and central drawer. Est. £100 - £120.

527. A good quality cased gilt decanter set with brass mounted handles. Est. £200 - £250.



527

528. A small walnut musical box on ball feet.
Est. £20 - £30.

529. A good French six air cylinder miniature musical box on ball feet. Est. £100 - £150.

530. A Continental lacquered tea caddy decorated with Eastern figures. Est. £30 - £50.

531. A carved oak walking stick in the form of a squirrel. Est. £30 - £40.

532. An unusual walking stick with antler mount together with one other. Est. £20 - £30.

533. A pair of turned urns and covers on pedestal base. Est. £250 - £300.

534. A good pair of aesthetic bookends attractively decorated with leaves. Est. £200 - £250.

535. A good unusual hardstone ashtray mounted with three pelicans on brass base. Est. £600 - £700.

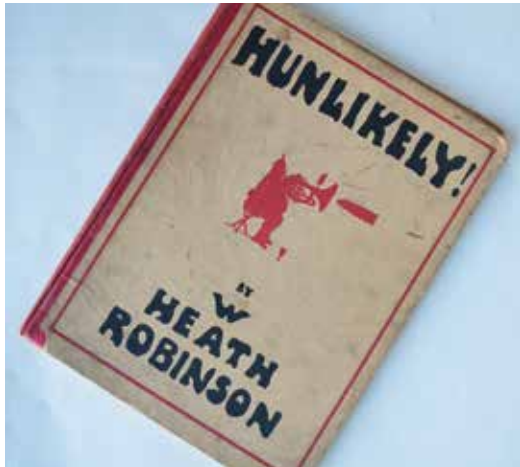


534

536. FRED G SHAW: "The Complete Science of Fly Fishing and Spinning", together with another book by F.M HALFORD: "Dry Fly Fishing in Theory and Practice". Est. £50 - £60.

537. RUSSELL STEPHENSON: Eighty Sketches in Watercolour from Nature. Est. £80 - £100.

538. W. HEATH ROBINSON: "Hunlikely". Red cloth binding. No dust cover. Est. £100 - £120.



538

539. LEONARD BASKIN: "Hosie's Aviary". (Dust cover present), together with one other entitled "Hosie's Alphabet". (No dust cover). Both have signatures to first page: "Lisa, Hosie and Leonard". Est. £80 - £100.

540. A collection of leather bound books. Est. £30 - £40.



541 & 542

541. A maternity figure from Congo. Approx. 42 cms high. Est. £40 - £60.

542. A wooden figure of a man in seated position. Est. £40 - £60.

543. A Gabon male reliquary figure. Approx. 34 cms high. Est. £40 - £50.

544. A brass figure of an Eastern lady. Approx. 28 cms high. Est. £50 - £60.

545. A Kuba Congo mask. Est. £80 - £100.

546. A Kuba Congo mask. Est. £150 - £200.

547. A large African tribal boat and figures on stand. Approx. 140 cms long. Est. £200 - £250.



547

548. An unusual Congo cup. Est. £30 - £40.

549. An Oba of Benin figure of a man. Approx. 36 cms. Est. £50 - £60.

550. A large heavy bronze figure of a mermaid Benin. Approx. 37 cms high. Est. £120 - £150.

551. A large oval Congo mask. Approx. 36 cms high. Est. £40 - £60.

552. A large lunar mask from Congo. Approx. 40 cms long. Est. £120 - £150.

553. Two Royal Copenhagen figures of ladies. Est. £30 - £40.

554. A Royal Copenhagen dog together with a playing bear. Est. £20 - £30.

555. A Lladro figure of a girl together with a duck. Est. £15 - £20.



556

556. An attractive pair of red glass lustres etched with flowers and gilding. (One lustre missing). Est. £80 - £100.

557. MOORCROFT: An attractive stylish two handled vase decorated with flowers and leaves. Approx. 21.5 cms high. Est. £500 - £800.



557

558. PAUL HORTON. A stylish vase and plate titled: "After the day is done". Original box and paperwork. Est. £100 - £150.

559. ROYAL CROWN DERBY. An attractive tea service, typically decorated with flowers and blue ground. Est. £80 - £100.

560. An attractive Royal Crown Derby decorated part coffee service with gilded border. Est. £40 - £60.

561. A good quality set of Royal Worcester gilt coffee cups and saucers with gilt rim. Est. £30 - £50.

562. An extensive Royal Worcester Cumberland pattern part tea, coffee and dinner service. Est. £100 - £150.

563. An extensive Royal Doulton Reflections tea and coffee service. Est. £80 - £100.

564. Large extensive Lichfield pattern Wedgwood dinner service. Est. £30 - £40.

565. A pair of tall Staffordshire dogs. Est. £20 - £30.

566. A pair of cranberry glass ewers. Est. £60 - £80.

567. A good pair of early porcelain figures with floral decoration. Est. £80 - £100.



567

568. A pair of attractive gilt Dresden plates decorated with flowers. Est. £80 - £100.



568



569

569. An attractive pair of blue and gilt ewers and covers on square bases. Approx. 17 cms high. Est. £100 - £150.

570. A Canton circular fruit dish, decorated to back with panels. Est. £80 - £100.

571. A good set of five Royal Worcester decorated ewers with gilt handles, each numbered: 29115-1094. Est. £400 - £450.

572. An attractive micro mosaic panel depicting the Doves of Pliny. Approx. 12 cms x 9 cms. Est. £500 - £600.



572

573. A collection of attractive cabinet cups and saucers. Est. £50 - £60.

574. A large glass four trumpet epergne on glass base. Est. £50 - £60.

575. An attractive set of ten custard cups on tapering supports. Est. £30 - £50.

576. A set of six cranberry glasses on panelled supports. Est. £30 - £40.

577. An attractive large Majolica figure of a lady with floral decoration. Est. £80 - £100.

578. A balluster shaped creamware coffee pot with floral finial. Est. £40 - £60.

579. A good hardwood vase stand on five spreading supports. Est. £50 - £60.

580. A 19th Century square Famille Rose bowl decorated with flowers and red seal mark. Est. £150 - £200.

581. A 19th Century Chinese Mille Fleurie dish decorated with flowers and leaves. Est. £50 - £60.

582. A good set of six carved ivory napkin rings inset with dragons. Est. £60 - £70.

583. An unusual Chinese dragon decorated pot pourri with lift off cover. Approx. 19 cms high. Est. £100 - £150.



583

584. A 19th Century Chinese baluster shaped vase decorated with flowers. Marked to base. Approx. 11 cms high. Est. £80 - £120.

585. An 18th Century blue ground bottle with three floral panels. Approx. 16 cms high. Est. £80 - £120.



586

586. A good bronze figure of a Buddha in seated position. Approx. 20 cms high. Est. £400 - £500.

587. A Chinese blue and white sweet dish with blue ground decoration. Marked to side. (slight damage). Est. £30 - £40.

588. CHAFFERS & CO: Blue and white hexagonal teacup and saucer. Richard Chaffers & Co. C.1760 painted with the Jumping Boy pattern, saucer approx. 11 cms diameter, mock Oriental mark to base and four character script marks. Est. £500 - £600.



FURNITURE





599

590. An Edwardian slope top Davenport with dummy drawers and string inlay. *Est. £60 - £80.*

591. A small mahogany kidney shape writing desk inset with nine drawers. *Est. £150 - £200.*

592. An attractively glazed cartridge display. *Est. £200 - £250.*

593. A good large mahogany armchair on scroll supports. *Est. £100 - £150.*

594. A small button back nursing chair with brass castors. *Est. £30 - £40.*

595. A good quality Edwardian four drawer linen press with cross banding decoration. *Est. £100 - £150.*

596. A good large French armoire with brass hinges on bracket feet. *Est. £80 - £100.*

597. Four tier mahogany whatnot with single drawer and turned column. *Est. £100 - £150.*

598. A finely carved corner unit with drop flaps. *Est. £40 - £60.*

599. An attractive burr walnut Canterbury on turned supports with single drawer and fluted columns. *Est. £200 - £250.*

600. An Antique oak carved mule chest. *Est. £60 - £80.*

601. A good Antique oak dresser base on tapering supports. Approx. 152 cms. *Est. £120 - £150.*

602. A bow front miniature mahogany chest of four drawers. *Est. £30 - £40.*

603. A heavy oak plank top dresser base on square tapering supports. *Est. £100 - £150.*



604

604. A good stripped pine two part estates cupboard with fitted interior and two drawers. Over 2 ms high. Est. £200 - £250.

605. A large impressive pine kitchen dresser with two doors and two drawers to base with shelved top. Approx. 2.5 ms tall. Est. £250 - £300.

606. An attractive Edwardian rosewood inlaid dresser with turned support and glazed decoration. Est. £150 - £200.

607. A good oak Quicksey kitchen dresser with fitted interior and hinged front. Est. £200 - £250.

608. A mahogany Edwardian twin pedestal desk with nine drawers. Est. £60 - £80.

609. A good pair of button back armchairs decorated with scrolls and flowers. Est. £100 - £150.

610. A lady's scroll decorated button back chair with carved decoration. Est. £80 - £100.

611. A mahogany four tier whatnot on turned support. Est. £80 - £100.

612. An early oak four drawer desk on bun feet. Approx. 93 cms high. Est. £80 - £100.

613. A small oak carved hinged bible box. Est. £30 - £40.

614. An Edwardian oak carved Davenport with hinged top and barley twist supports. Est. £50 - £60.

615. A rectangular mirrored panel. Est. £20 - £30.

616. A walnut Davenport with hinged top and dummy drawers. Est. £60 - £80.

617. A set of five oak dining chairs with slip in seats. Est. £40 - £50.

618. A rosewood sewing box on stretcher base. Est. £80 - £100.



605



619

- 619.** A good stylish oak bookcase with fluted columns and two doors to base. Mounted with stylised flowers. *Est. £300 - £350.*
- 620.** A good quality Edwardian secretaire bookcase with carved panel front on bracket feet. *Est. £200 - £250.*
- 621.** A mahogany serpentine Antique sideboard with brass handles. *Est. £80 - £100.*
- 622.** An oak Continental bombe chest with conforming canted corners. *Est. £200 - £250.*
- 623.** A brass and oak framed mounted club fender. Approx. 56 cms high. *Est. £150 - £200.*
- 624.** A small Edwardian glazed cabinet with inlaid decoration. *Est. £40 - £60.*
- 625.** A cane seated conservatory chair. *Est. £80 - £100.*
- 626.** A good papiér-mâche sewing box on stand, the body decorated with flowers, leaves and MOP insets. *Est. £300 - £350.*

627. An attractive mahogany lady's stationery box with four fitted drawers, panelled doors, reeded supports and plush brass travelling handles. *Est. £500 - £600.*

628. A large oak kitchen dresser with panelled drawers and shelved back. Approx. 215 cms high. *Est. £400 - £600.*

629. A large oak twin pedestal desk with turned handles. *Est. £60 - £80.*

630. A mahogany pedestal table on turned supports. *Est. £40 - £60.*

631 An Antique rocking horse on stand. *Est. £150 - £200.*



631

- 632.** A good cane travelling suitcase. *Est. £50 - £60.*
- 633.** A pair of Edwardian carver chairs with crossbanded decoration. *Est. £40 - £60.*
- 634.** A Dutch marquetry single dining chair decorated with flowers and scrolls. *Est. £80 - £120.*
- 635.** An attractive walnut loo table on turned and carved supports. *Est. £200 - £250.*
- 636.** A Victorian mahogany sewing table on stretcher base. *Est. £120 - £150.*
- 637.** An oak sloping bow chair on turned supports. *Est. £40 - £60.*
- 638.** An oak smoker's chair on turned supports. *Est. £40 - £50.*
- 639.** An oak smoker's chair on turned supports. *Est. £40 - £50.*
- 640.** A display case containing four stuffed birds. *Est. £40 - £60.*

641. A tall figure of a stuffed bird in glass cabinet.
Est. £60 - £80.

642. An Antique oak corner cabinet with shell inlay. Est. £50 - £60.

643. An Antique mahogany and oak inlaid large corner cupboard. Est. £80 - £120.

644. A Continental upholstered armchair on reeded supports. Est. £150 - £200.

645. A set of six mahogany hoop back dining chairs. Est. £50 - £60.

646. An oak cased grandfather clock with brass dial. Est. £150 - £200.

647. A large gilt overmantle mirror with scroll decoration. Est. £100 - £150.

648. A small reproduction sofa. Est. £40 - £60.

649. An 18th Century Longcase clock having green lacquer case decorated with Oriental scenes, boat and figures on horse back. the eight day striking movement with five pillars, anchor escapement and rack striking mechanism, twelve inch brass arch dial having lunar aperture, chased spandrels and silvered chapter ring with Roman numerals. Brass cased weights. Anonymous maker. C. 1760. Total height of case approx. 90 inches. Est. £700 - £900.

650. An early 18th Century walnut veneered chest of three long drawers having chevron inlays, brushing slide and standing on bracket feet with associated later mahogany veneered and glazed top. Width approx. 42 inches. Est. £500 - £600.



653



655

651. An 18th Century walnut veneered chest on two short and three long drawers with engraved brass plate handles, quarter veneers to top and decorated with banded inlay on bracket feet. Est. £450 - £500.

652. A late 18th Century commode in the manner of Guisepppe Maggiolini, having marquetry inlay to front, top and sides with roundels depicting Hermes and having selected crossbanded veneers. Est. £2500 - £3000.

653. ROBERT "MOUSEMAN" THOMPSON. Panelled oak chest of drawers with raised upstand above two short, over three graduating drawers on four octagonal feet with carved mouse signature. Approx. 91 cms x 45 cms x 91 cms. Est. £2500 - £3000.

654. A large impressive pair of Continental figures depicting Aphrodite portrayed as standing and loosely draped, both on circular pedestal base. Approx. 204 cms. Est. £1000 - £1200.

655. A matched pair of good quality bow front Edwardian bookcases on tapering supports, attractively inlaid with swags and flowers with swan neck pediment and string inlay. Approx. 188 cms x 100 cms. Est. £3000 - £3500.

TERMS AND CONDITIONS OF SALE

Whittons carries on business with bidders, buyers and all those present in the auction room prior to or in connection with a sale on the following general conditions and on such other terms, conditions and notices as may be referred to herein.

1. BIDDING PROCEDURES AND THE BUYER

a) Bidders are required to register their particulars prior to bidding and to satisfy any security arrangements before entering the auction room to view or bid. We do not accept bids from any person who has not completed and delivered to us one of our Bidding Forms. You will be asked for photographic proof of identity, residence and references. Bids will not be accepted if you fail to provide sufficient identification when asked to produce it. We may also ask for a deposit to be paid prior to bidding. We may refuse entry to a Sale to any person even if that person has completed a Bidding Form.

b) The maker of the highest bid accepted by the Auctioneer conducting the sale shall be the buyer at the hammer price and any dispute regarding a bid shall be made and settled at the Auctioneer's absolute discretion, and may refer to the Lot during the course of the auction or otherwise. The Auctioneer shall act reasonably in exercising this discretion. The Auctioneer's decision is final.

c) Bidders shall be deemed to act as principals.

d) Once made no bid can be withdrawn.

e) Our right to bid on behalf of the seller is expressly reserved up to the amount of any reserve and the right to refuse any bid is also reserved.

2. INCREMENTS

a) Bidding increments shall be at the Auctioneer's sole discretion.

3. THE PURCHASE PRICE

a) The buyer shall pay the Hammer Price together with a premium thereon of 15% plus VAT on the premium at the rate imposed by law on all lots. Lots purchased online will incur an additional charge in the sum of 3% of the Hammer Price plus VAT at the rate imposed by law.

4. VALUE ADDED TAX

a) Where a lot is marked with an asterisk (*), VAT will be payable at the standard rate as imposed by law on the Hammer Price as well as being added to the buyer's premium.

b) Where a lot is marked with a double asterisk (**), VAT will be charged at a reduced VAT rate (currently 5%) to the gross price of that lot being the Hammer Price plus the buyer's premium.

c) Where no asterisk is marked against a lot, no VAT is payable on the Hammer Price, and is deemed to have been sold under the Auctioneer's Margin Scheme. VAT included within the premium is not recoverable as input tax.

5. PAYMENT

a) Your obligation to pay for a lot occurs when the Auctioneer's hammer has fallen in respect of the lot.

b) Immediately a lot is sold you will give to us, if requested, proof of identity and pay to us the total amount due in cash or in such other way as agreed by us. Any payments by you to us may be applied by us towards any sums owing from you to us on any account whatever without regard to any directions of you or your agent, whether express or implied.

c) No cash payments will be accepted over £6000.00 (Six Thousand Pounds Sterling).

d) Payment is acceptable in cash, credit or debit card. A handling charge of 2% will be added to all purchases made by credit card. Payments made by debit card will incur no extra charge. Payment can be made by direct bank transfer into our bank account.

e) Payment of the purchase price and all other sums payable by you to Whittons must be made in the currency in which the sale was conducted within seven working days following the sale. Payment must be received in cleared funds by the seventh working day following the sale. Failure to provide cleared funds within this time may result in remedies being exercised as stated in condition 7.

6. TITLE AND COLLECTION OF PURCHASES

a) Ownership of the lots purchased shall not pass to the buyer until payment has been made in full to us of the total amount due, to include all premiums, charges and postal costs where applicable, and received in cleared funds by Whittons.

b) Responsibility of the lot passes to the buyer at the fall of the Auctioneer's hammer. The seller will no longer be responsible for the lot thereafter. The buyer will indemnify the seller and keep the seller fully indemnified from and against all claims, proceedings, costs, expenses and losses arising in respect of any injury, loss and damage caused to the lot after the fall of the Auctioneer's hammer until the buyer obtains full title to it.

c) You shall, at your own risk and expense take away any lots that you have purchased and paid for in full, not later than seven working days following the sale or upon the clearance of any cheque used for payment after which you shall be responsible for any removal, storage and insurance charges. No purchase can be claimed or removed until it has been paid for in full.

d) Title to the lot remains in and is retained by the seller until payment has been made in full to us of the total amount due, to include all premiums, charges and postal costs where applicable, and received in cleared funds by Whittons.

e) All items are held at the risk of the buyer. If they are not removed within fourteen working days of the sale the auctioneers will instruct a local carrier to remove them for storage. The buyer will be responsible for paying all charges incurred and for making arrangements in advance for the removal of items from their store after payment of their charges and on production of our receipt for the items.

7. REMEDIES IN THE EVENT OF NON-PAYMENT OR PURCHASES NOT BEING COLLECTED ON TIME

If any lot is not paid for in full and taken away in accordance with these conditions or if there is any other breach of these conditions, we, as agent for the seller and on our own behalf, shall at our absolute discretion and without prejudice to any other rights we may have be entitled to exercise one or more of the following rights and remedies: To proceed against you for damages for breach of contract;

a) To rescind the sale of that lot and/or any other lots sold by us to you;

b) To resell the lots (by auction or private treaty) in which case you shall be responsible for any resulting deficiency in the total amount due (after crediting any part payment and adding any resale costs). Any surplus so arising shall belong to the seller;

c) To remove, store and insure the lot at your expense and, in the case of storage, either at our premises or elsewhere;

d) To charge interest at a rate not exceeding 1.5% per month on the total amount due to the extent it remains unpaid for more than seven working days after the sale;

e) To retain that or any other lot sold to you until you pay the total amount due

f) To reject or ignore bids from you or your agent at future auctions or to impose conditions before and such bids shall be accepted.

g) To apply any proceeds of sale of other lots due in future becoming due to you towards the settlement of the total amount due and to exercise a right to possession (lien) of any of your property in our possession for any purpose until the debt due is satisfied.

h) We shall, as agent for the seller and on our own behalf pursue these rights and remedies only so far as is reasonable to make appropriate recovery in respect of breach of these conditions.

8. THIRD PARTY LIABILITY

All members of the public enter our premises at their own risk. They must make themselves aware of all security and fire arrangements in the building and to note the layout of the accommodation. Accordingly neither the Auctioneer nor our employees or agents shall incur any liability for death or personal injury (except as required by law by reason of our negligence) or similarly for the safety of persons visiting prior to or at a sale.

9. RIGHT TO REFUSE ENTRY

Whittons shall have the right at our discretion, to refuse admission to our premises or attendance at our auctions by any person.

10. COMMISSION BIDS

We will, if so instructed, execute bids on a buyer's behalf. The bid must be received by us no later than one hour prior to the commencement of the sale for which the lot is being sold. The bid must be clearly written or typed, and must have the full name, address and telephone number of the person bidding, and signed by the person making the bid. Neither the Auctioneer nor our employees shall be held responsible for any failure to do so save where such failure is unreasonable. Where two or more commission bids are received at the same price, the Auctioneer reserves the right and absolute discretion to choose which bid shall prevail. It will be assumed that the prospective buyer has carefully inspected the lot and has satisfied themselves as to its condition prior to leaving the commission bid. No bids can be retracted once the item has been sold.

11. WARRANTY OF TITLE AND AVAILABILITY

The seller warrants to the auctioneers and the buyer that the seller is the true owner of the property consigned or is properly authorised by the true owner to consign it for sale and is able to transfer good title to the property free from any third party claims.

12. AGENCY

The auctioneers normally act as agent only and disclaim any responsibility for default by sellers or buyers.

13. TERMS OF SALE

The seller acknowledges that Lots are sold subject to the stipulations of these conditions in their entirety and on the terms of consignment as notified to the consignor at the time of the entry of the lot.

14. DESCRIPTIONS

Whittons will not be held responsible for misrepresentation, and any wording or description either spoken written discussed published or otherwise shall not form the basis of any contract. Items are described as opinion only, and whilst due diligence is taken to make accurate descriptions, it may be impracticable to ensure accuracy in its entirety. All items are therefore sold as seen and prospective buyers must inspect view and take their own independent expert advice should they so wish before bidding on any item in any sale and must satisfy themselves as to the accuracy of any description applied to a lot. Prospective buyers bid on the understanding that representations or statements as to authorship genuineness origin date age provenance condition size shape weight colour etcetera are opinions only. Subject to the foregoing neither we the auctioneer nor our employees or agents nor the seller accept liability for the correctness of such opinions and all conditions and warranties, whether relating to description, condition or quality of lots, express, implied or statutory, are hereby excluded. Private treaty sales made under these conditions are deemed to be sales by the auction for purposes of consumer legislation.

Notwithstanding this condition any Lot which proves to be a deliberate forgery as defined may be returned to us by you within 14 days of the auction provided it is in the same condition as when bought, and is accompanied by particulars identifying it from the relevant catalogue description and a written statement of defects. If we are satisfied from the evidence presented that the Lot is a deliberate forgery we shall refund the money paid by you for the Lot including any buyer's premium provided that

- a) if the catalogue reflected the accepted view of scholars and experts as at the date of sale or
- b) you personally are not able to transfer a good and marketable title to us, you shall have no rights under this condition.

The right of return provided by this Condition is additional to any right or remedy provided by law or by these Conditions of Sale.

15. ONLINE BIDDING

Whittons may offer an online bidding service via www.the-saleroom.com for bidders who cannot attend the sale. In completing the bidder registration on www.the-saleroom.com and providing your credit card details and unless alternative arrangements are agreed with Whittons you:

- a) authorise Whittons if they so wish to charge the credit card given in part or full payment including all fees for items successfully purchased in the auction via www.the-saleroom.com and
- b) confirm that you are authorised to provide these credit card details to Whittons through www.the-saleroom.com and agree that Whittons are entitled to dispatch the goods to the card holder name and card holder address provided in fulfillment of the sale.

Please note that any lots purchased via the-saleroom.com live auction service will be subject to an additional 3% commission charge + VAT at the standard rate imposed on the hammer price. Buyers registering to bid through www.the-saleroom.com must submit credit/debit card details to register. Whittons will take a deposit of maximum £500.00 sterling from the registered credit / debit card at the discretion of the auctioneer. If the buyer is unsuccessful this deposit will be refunded. If successful the deposit will be deducted from the final invoice. The deposit will be subject to variables in exchange rates and bank charges that the buyers' bank might levy. The buyer will be liable for such charges.

15. CHEQUES

Cheques will only be accepted for payment at the auctioneer's discretion. No purchases will be removed from the saleroom unless cleared funds have been received by us. Any prospective purchasers who wish to pay by cheque must inform the auctioneers at least 7 working days before the sale. It will be at the auctioneer's discretion whether to take a cheque in lieu of prospective purchases prior to the sale and allowing for clearance of the cheque. If you are later unsuccessful in your purchase, the amount of your cheque will be refunded. Payment in cheque will not be acceptable on the day of the sale if prior arrangement has not been made with the auctioneer but if you wish to pay using this method then your purchases will be withheld until full clearance of the cheque has been granted. Only authorised payments by card or cash will be allowed to allow removal of goods on sale day.

16. TELEPHONE PAYMENTS

Payments will not be accepted if made at the telephone for invoices of more than £300.00 unless the buyer is known to the auctioneer. Card payments can be made in person or by bank transfer cash up to £6000.00 (Six Thousand Pounds Sterling).

17. SELLER'S COMMISSION AND CHARGES

Commission is charged at 15% plus VAT at the standard rate on the hammer price. Items which sell for less than £20.00 will incur a commission charge of £5.00 plus VAT at the standard rate. No charge will be made for items which fail to sell. Withdrawn lots may incur an administration charge if withdrawn once the item has been published for sale. No charges are made for catalogue illustration photography or advertising unless special illustration photography or advertising is deemed necessary and not without the consent of the vendor. A charge of £3.00 per item will be charged per item for each item that requires electrical testing.

18. RESERVES

Items will only be accepted with reserve which, in the auctioneer's opinion, are likely to realise at least £20.00 or more. Any item worth less than this value will be deemed to be entered for sale without reserve. Any items which are taken with a reserve price will be accepted on the basis that the auctioneer will have discretion to sell that item for 10% less than the reserve if a buyer at that price exists on the day. Whittons can refuse to accept any item for sale where, in the auctioneer's opinion, the reserve price suggested by the seller is too high and/or the item would not sell.

19. SELLER'S CONDITIONS

- a) All sellers must sign the declaration confirming conditions of sale on the receipt which is given to you when you submit goods to us for sale. All items handed over to us are assumed to be given to us for the purpose of entering those lots for sale by auction.
- b) All sellers must sign to confirm that they are the true owners of the goods entered for sale and that they have legitimate title to those goods free of any encumbrance and free from any third party or that they have authority to dispose of the goods on behalf of the true owner and are able to transfer good and marketable title to the property free from any third party claims.
- c) All goods entered for sale must comply with all safety regulations under the Consumer Protection Act and the Furnishing Fire / Safety Regulations 1988.
- d) The seller authorises Whittons to deduct commission at the rates quoted and by the signing the form, the seller is deemed to have accepted the terms and conditions of sale.
- e) The seller has a duty to disclose all defects restorations or alterations to the goods at the time they are entered for sale and is duty bound to bring such defects restorations or alterations to auctioneer's attention in writing. Failure to do so notwithstanding any description of the goods given by the auctioneers can result in the sale being rescinded and the seller being responsible for all allied costs incurred by the auctioneer and the buyer.
- f) The seller warrants in respect of any item of mechanical or electrical equipment that it is:
 - a. in working order
 - b. reasonably fit for the purpose for which it is designed or adapted
 - c. that it can be used safely and without risk of causing injury or damage and
 - d. will indemnify Whittons against any loss or damage suffered in consequence of any breach of the above warranty and undertaking.
- g) The Vendor gives Whittons full and absolute right to photograph and illustrate any lot placed with them for sale and to use such photographs and illustrations at any time at their absolute discretion whether or not in connection with the auction.
- h) Sellers selling any assets of their business must disclose whether they are registered for value added tax (VAT) at the time the goods are presented for sale and disclose the VAT registration number and indicate clearly whether the goods are to be sold under the margin scheme and where this is the case, VAT will not be recoverable by the seller.

English law applies to the interpretation of these Conditions.





THE FINE ART AUCTION ROOMS
DOWELL STREET, HONITON EX14 1LX

01404 517000 • 01392 345454

info@whittonsauctions.co.uk

www.whittonsauctions.co.uk