



SUMMER
AUCTION

13th August 2015

Cover illustrations

Front & Back: Lot 408

Inside Front: Lot 180

Inside Back: Lot 151





SUMMER AUCTION

THURSDAY 13TH AUGUST 2015

Commencing at 10.00 am

Live Internet bidding via

the-saleroom.com

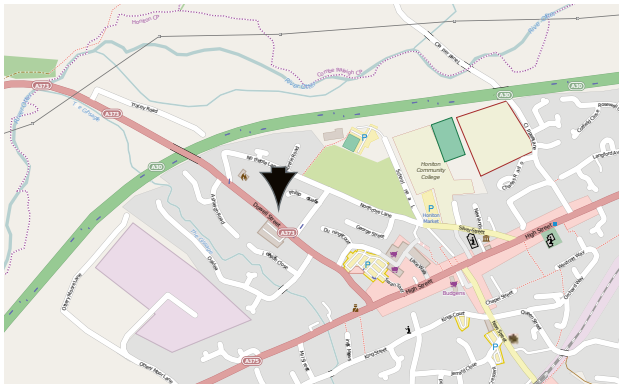
EACH LOT IS ILLUSTRATED ONLINE

VIEWING TIMES:

Saturday 8th August 10.00 am – 1.00 pm

Sunday 9th August 10.00 am – 1.00 pm

Monday 10th, Tuesday 11th, and Wednesday 12th August 9.30 am – 4.30 pm



THE FINE ART AUCTION ROOMS
DOWELL STREET
HONITON
DEVON
EX14 1LX
01404 517000 · 01392 345454
info@whittonsauctions.co.uk
www.whittonsauctions.co.uk

ALL COMMISSION BIDS AND TELEPHONE BIDS MUST BE REGISTERED WITH THE AUCTIONEERS IN WRITING, BY 4.30PM, THE DAY BEFORE THE SALE. CARD DETAILS REQUIRED IN ADVANCE, AND A 10% DEPOSIT OF THE LOWER ESTIMATE OF THE LOT ON WHICH YOU WISH TO BID WILL BE TAKEN FOR TELEPHONE BIDS.

ALL PROSPECTIVE BIDDERS MUST REGISTER TO BID AND PROVIDE CARD DETAILS PRIOR TO BIDDING. PHOTOGRAPHIC ID REQUIRED. PROOF OF FUNDS MAY BE REQUIRED. REGISTRATION AND COMMISSION BID FORMS ARE AVAILABLE TO DOWNLOAD FROM OUR WEBSITE.

PHOTGRAPHIC I.D. WILL BE REQUIRED FROM ANYONE WISHING TO VIEW THE WATCHES AND JEWELLERY.

BUYERS PREMIUM 15 %



Order of sale

Silver 1-190

There will be a 15 minute break.

Jewellery 201-359

Watches 362-377

There will be a 15 minute break.

Pictures 381-399

Clocks and Collectables 401-438

Porcelain and Oriental China 439-506

Rugs 507-522

Furniture 523-628



Silver



1

1. Liberty: A stylish spoon with textured handle. Birmingham 1919. Est. £80-£100

2. An attractive engraved purse decorated with scrolls and flowers. Approx. 120 grams. Birmingham 1901. By GU. Est. £40-£50

3. A good pair of Irish Georgian style trefid preserve spoons. Dublin. By TB&S. Approx. 108 grams. Est. £60-£70

4. A boxed set of six coffee spoons. Sheffield. By M&W. Est. £20-£30

5. A pair of stylish napkin rings of hammered effect. Sheffield. By EV. Approx. 65 grams. Est. £20-£30

6. A small christening mug on pedestal base. Dublin 1909. By WVW. Approx. 80 grams. Est. £40-£50

7. A buckle together with a hinged top vesta, and a stylish brooch. Various dates and makers. Approx. 40 grams. Est. £30-£40

8. A group of various engine turned napkin rings. Various dates and makers. Approx. 145 grams. Est. £30-£40

9. A boxed plain plant holder. Birmingham 925 standard. By B&C. Est. £20-£30

10. A set of six stylish buttons decorated with ladies. Chester. By T&S. Est. £30-£40

11. An unusual silver Daimler-Benz key fob in fitted case. Est. £20-£30



12

12. A George III pint tankard, heavily embossed with flowers and leaves. London 1763. By George Grundy. Approx. 335 grams. Est. £400-£450

13. A large heavy teapot with reeded rim and canted corners on four ball feet. London 1922. Approx. 535 grams. Est. £250-£300

14. A heavy helmet shaped cream jug of Georgian design with reeded handle. Sheffield 1964. By H&H. Approx. 200 grams. Est. £100-£120

15. A good quality heavy Georgian teapot stand on four supports with beaded rim. London 1792. By Peter and Ann Bateman. Approx. 275 grams. Est. £320-£350

16. A modern circular picture frame with beaded rim and velvet back. Birmingham modern. By B&C. Est. £20-£30



10

- 17.** A set of four Georgian beaded teaspoons. London. By WF. Approx. 50 grams. *Est. £20-£30*
- 18.** A set of six Georgian fiddle pattern teaspoons. London. By WE, WF & WC. Approx. 131 grams. *Est. £30-£40*
- 19.** A set of six OE pattern dessert spoons with initialled terminals. London 1745. By H&B? Approx. 165 grams. *Est. £80-£100*
- 20.** An attractive set of six plus six fish eaters with engraved blades and bone handles. Birmingham 1874. By JG. *Est. £100-£120*
- 21.** An unusual pair of glass oil and vinegar bottles shaped with open centres and double pouring lips. Birmingham. By JT&H. *Est. £80-£100*
- 22.** A Georgian tumbler with gilt interior. London 1808. By WP. Approx. 125 grams. *Est. £150-£200*
- 23.** An unusual blue faceted match striker. Birmingham. By L&S. *Est. £120-£150*
- 24.** A Georgian basting spoon with scroll finial. London. By WF. Approx. 97 grams. *Est. £80-£100*
- 25.** A silver mounted Asprey decanter and stopper, together with another decanter. *Est. £40-£50*
- 26.** An Art Nouveau oval picture frame with garnet decoration. London. By William Cummings. *Est. £90-£100*
- 27.** A stylish Art Nouveau hand mirror. Chester. By J&R. *Est. £40-£50*
- 28.** A mounted claret jug with reeded thumb piece and hinged top. Chester. By W&H. *Est. £120-£150*
- 29.** A cased set of seven blue enamel top jars. London. By Aspreys. *Est. £100-£120*
- 30.** A good Continental ornate picture frame decorated with flowers and swags. Approx. 23 cms high. *Est. £80-£100*
- 31.** A set of five OE dessert forks. London. By GJ&DF. Approx. 260 grams. *Est. £60-£80*
- 32.** A set of five OE dessert forks. Dublin 1809. By PW. Approx. 225 grams. *Est. £60-£80*
- 33.** A Continental pie slice decorated with cherubs. Approx. 55 grams. *Est. £20-£30*
- 34.** A hot water jug on hairy feet. Birmingham. By M&W. Approx. 490 grams. *Est. £100-£120*
- 35.** A group of three various picture frames. *Est. £20-£30*
- 36.** A Georgian caddy spoon with heart shaped bowl. Birmingham 1802. *Est. £30-£40*
- 37.** A good set of six cast buttons decorated with figures. Birmingham. By R&W. *Est. £20-£30*
- 38.** A pair of cut glass hinged top scent bottles. Birmingham. By L&S. *Est. £60-£80*
- 39.** A heavy good quality modern helmet shaped cream jug. Birmingham. By S&R. Approx. 110 grams. *Est. £40-£50*
- 40.** A Georgian toddy ladle mounted with pouring lip. London 1784. By Hester Bateman. *Est. £150-£200*
- 41.** A good quality engine turned cigarette case. Birmingham. By T&S. Approx. 220 grams. *Est. £40-£50*
- 42.** Two odd engraved napkin rings. Approx. 40 grams. *Est. £30-£40*
- 43.** Two glass mounted powder jars with lift off covers. Birmingham. By C&G. *Est. £60-£70*



44

- 44.** A chased and embossed teapot decorated with flowers and scrolls. London 1837. By JA&JA. Approx. 520 grams. *Est. £140-£160*



45, 46, 325 & 326

45. An unusual match case in the form of a shotgun cartridge with lift off top. Edinburgh 1934. By GL&S. Approx. 55 grams. Est. £300-£400

46. A rare and unusual miniature scent in the form of a champagne bottle with gilt lid and enamelled label. London 1880. By Samuel Mordon. Approx. 50 mm high. Est. £300-£400

47. A heavy set of six plus six fiddle pattern forks. London 1924. by H&H. Approx. 850 grams. Est. £220-£260

48. An electrical table lamp decorated with reeded swags on square base. Approx. 22 cms high. Sheffield. By R&Co. Est. £60-£80

49. A square based half fluted cream jug. Birmingham. By HP&H. Approx. 120 grams. Est. £60-£80

50. A pair of Indian three legged salts decorated with flowers and leaves. Approx. 105 grams. Est. £20-£30

51. A pair of pierced pin cushions on ball feet, one in the form of a heart, the other in the form of a kite. Birmingham. By R&P. Est. £20-£30

52. A square engine turned hinged top cigarette box with fitted interior. Birmingham modern. By A Bros. Est. £30-£40

53. A good quality embossed two handled small cup on pedestal base. Chester. By WB&S. Approx. 100 grams. Est. £20-£30

54. A cased set of six Art Deco coffee spoons. Sheffield. By CB&S. Approx. 90 grams. Est. £20-£30



55

55. A Victorian helmet shaped teapot with rose cap finial and scroll decorated feet. London 1844. By JS&AS. Approx. 710 grams. Est. £180-£220

56. An attractive bright cut swing handle bonbon basket on pedestal base. London 1901. Approx. 175 grams. Est. £160-£180

57. An attractive hand mirror enamelled with pink carnations. Birmingham 1950. By Aide Bros. Est. £120-£150



58

58. A good pair of half fluted Adams' style candlesticks on oval base with beaded rim. London 1968. By DJ&S. Approx. 29 cms high. Est. £550-£600

59. A good quality William IV nutmeg grater with ribbed decoration, hinged top and canted corners. Birmingham 1832. By Joseph Willmore. Est. £600-£650

60. A pair of George III fiddle pattern crested sauce ladles. By William, Eley-Fearne and Chawner. Approx. 95 grams. Est. £80-£90

61. A good Eastern hinged top cigarette box decorated with flowers and leaves. Approx. 345 grams. Est. £80-£100

62. An unusual Eastern silver pendant with tassle drops. Approx. 170 grams. Est. £60-£80

63. An Eastern silver belt of rope twist design. Approx. 250 grams. Est. £80-£100

64. An unusual filigree silver and amber necklace of circular form. Approx. 140 grams. Est. £40-£60

65. A coral mounted necklace decorated with coins together with one other. Est. £30-£40

66. A large circular medallion together with three chain link tassels. Approx. 120 grams. Est. £30-£40

67. A good quality Eastern hinged cigarette box profusely decorated with flowers and leaves. Approx. 210 grams. Est. £50-£60

68. A pair of Eastern earrings with filigree decoration together with similar pendant. Approx. 115 grams. Est. £40-£50

69. A pair of Eastern pendants with wirework and filigree decoration. Approx. 85 grams. Est. £30-£40

70. An agate mounted necklace with filigree and wirework decoration together with a matching bracelet. Approx. 75 grams. Est. £30-£40

71. A Continental leather and silver banded headpiece. Est. £30-£40

72. A Continental torque bangle together with two silver slave bangles. Approx. 200 grams. Est. £30-£40

73. An unusual engraved Continental pendant together with one other. Est. £30-£40

74. A heavy Continental headpiece, the drops decorated with balls. Approx. 550 grams. Est. £120-£150

75. A wirework and bead headpiece with ball decoration. Approx. 235 grams. Est. £50-£80



75, 62, 74, 76

76. A good quality silver and gold overlaid pendant heavily decorated with balls and leaves on fine link chain. Approx. 265 grams. Est. £80-£100

77. A pair of Egyptian style candlesticks engraved with figures. Approx. 355 grams. Approx. 19 cms high. Est. £80-£100

78. A heavy Eastern model of a junk boat on wooden stand. Approx. 230 grams. Est. £50-£60

79. A floral embossed aspergillum on pedestal base. Approx. 19 cms high. Approx. 100 grams. Est. £40-£60

80. A Continental engraved aspergillum. Approx. 215 grams. Est. £60-£70

81. A pair of heavy Eastern vases engraved with flowers and leaves. Approx. 32 cms high. Approx. 910 grams. Est. £200-£250

82. A green enamel top powder jar. Birmingham. By A Bros. Est. £60-£70

83. A silver mounted decanter with decorated top. Est. £50-£60

84. An Antique French beaker in fitted box. Est. £50-£60

85. A three finger cigar case with hinged cover. London. By WH Ltd. Approx. 120 grams. Est. £60-£70

86. A good quality Georgian style waiter on three ball and claw feet. Sheffield 1890. By WS&GS. Approx. 375 grams. Est. £140-£160

86A. A good quality Britannia standard bayonet sugar caster. London 1906. By C S Harris. Approx. 335 grams. Est. £280-£320

87. A large rectangular scroll decorated picture frame. Birmingham. By EM&S. Approx. 26 cms x 22 cms. Est. £60-£80

88. A heavy set of five OE dessert spoons. London 1905. By GJ&DF. Approx. 240 grams. Est. £60-£80

89. A good Georgian helmet shaped cream jug with reeded rim. London 1810. By Hester Bateman. Approx. 112 grams. Est. £120-£150

90. A good quality pair of embossed bonbon dishes decorated with flowers, scrolls and leaves. London 1892. By WC. Approx. 320 grams. Est. £150-£200

91. A pair of OE Georgian tablespoons. London 1761. Est. £30-£40

92. A Georgian baluster shaped cream jug with gadroon rim. London 1823. By TB. Approx. 215 grams. Est. £60-£80



93

93. An unusual pair of Georgian salt and pepper pots with pierced top on pedestal bases. London 1717. By AP. Approx. 130 grams. Est. £150-£200

94. A pair of good quality pickle forks with ball decoration. Birmingham. By R&B. Est. £20-£30

95. A set of six honeysuckle pattern teaspoons. London 1833. By TB. Approx. 180 grams. Est. £40-£50

96. A Scottish Georgian bright cut spoon. Edinburgh. By WWP, together with one other. Est. £20-£30

97. A group of various dessert, table and teaspoons. Various dates and makers. Approx. 305 grams. Est. £70-£80

98. A long hobnail cut scent bottle with screw on cover. London. By HT&S. Est. £80-£100

99. A group of silver bladed fish eaters, pickle forks etc. Various dates and makers. Est. £30-£40

100. A Georgian boat shaped seven bottle cruet with reeded border. London 1813. By AK. Est. £150-£200

101. A group of heavy engine turned cigarette cases, together with a goblet. Approx. 460 grams. Est. £80-£100

102. A rectangular hinged top cigarette box. Birmingham. By H&M. Est. £60-£70

103. An oval pierced bonbon dish with swing handle. Approx. 95 grams. Est. £70-£80

104. A group of four OE tablespoons. London 1831. By GA. Approx. 265 grams. Est. £80-£100

105. A Georgian style tapered pint mug. Sheffield 1931. By EV. Approx. 500 grams. Est. £250-£300

106. A good cased cutlery set of OE design consisting of twelve table forks, twelve dessert forks, four tablespoons, six soup spoons, twelve dessert spoons, two sauce ladles and five cruet spoons. London 1899. By C&Co. Together with cased matching knives. Est. £1000-£1200

107. A heavy tea strainer on matching stand with pierced handles. Sheffield 1970. Approx. 75 grams. Est. £80-£100

108. A good quality oval snuff box decorated with cherubs bearing import mark, London 1901. Est. £130-£150

109. A heavy OE pattern sauce ladle. London 1825. By William Sumner. Est. £200-£250

110. An unusual large capstan shaped inkwell. Approx. 19 cms in diameter. Birmingham 1916. By AJ Zimmerman. Est. £200-£250

111. A half fluted pedestal rose bowl decorated with flowers and leaves. London 1901. By William Hutton. Approx. 450 grams. Est. £220-£250

111A. A heavy good quality Georgian style helmet shaped cream jug with gadroon rim. London 1960. By RC. Approx. 250 grams. Est. £220-£250

112. A Georgian helmet shaped cream jug with beaded rim. London 1819. Approx. 110 grams. Est. £80-£100

113. A good quality three piece cruet set with hinged top. Birmingham. By R&D. Est. £60-£80

114. A good quality rectangular double card case with lift off cover. London. By SC&Co. Approx. 134 grams. Est. £80-£100

115. Six various serving spoons of various dates and makers. Approx. 420 grams. Est. £120-£150

116. A set of six Queens' pattern single struck ice cream spoons. London. By J&WM Ltd. Approx. 115 grams. Est. £40-£60

117. A set of twelve Coronation souvenir spoons. London. By JP. Approx. 340 grams. Est. £60-£80

118. A circular floral decorated picture frame. London modern. Together with a similar smaller example. Est. £30-£40

119. A set of five various wine labels. Birmingham modern. By A&Co. Est. £50-£60

120. A good quality model of a cantering horse with textured body. London modern. Approx. 1360 grams. Est. £300-£400

121. An unusual green glass lucifer together with one other. Est. £60-£70

122. Two large ball decorated lucifers with silver mounts. Est. £60-£70

123. A boxed pair of salts on ball feet. Birmingham. By H&T. Est. £50-£60

124. A hinged top tortoiseshell compact together with an inlaid plaque. Est. £30-£40

125. A pair of attractive cherub decorated napkin rings with scroll decoration. Est. £50-£60



126

126. A stylish rectangular cigarette box with textured body and hinged mounts. Birmingham 1903. By S&C Ltd. Est. £150-£200

127. A set of four plus two OE dessert spoons. London 1802. By WE&WF. Approx. 180 grams. Est. £50-£60

128. An attractive small swing handled basket with beaded rim and floral decoration. London 1880. Approx. 112 grams. Est. £100-£120

129. A group of four silver bladed fish knives with decorative handles. Sheffield 1861. By R&H. Est. £50-£60

130. A small stylish compact with loop top. Birmingham. By H&M. Est. £30-£40

131. A heavy good quality helmet shaped teapot with rose finial and scroll embossed feet. London 1834. By IJ&K. Approx. 780 grams. Est. £220-£240

132. A Goliath pocket watch with subsidiary seconds dial in silver mounted case. London. By WC. Est. £60-£80

133. A good quality cased set of six OE rat tail table forks, six dessert spoons, and two serving spoons. Approx. 900 grams. Est. £180-£200



128, 152, 134

134. A good quality barrel shaped cream jug with gilt interior. London 1785. Approx. 194 grams. Est. £150-£200

135. A group of six fiddle pattern dessert spoons of various dates and makers. Approx. 203 grams. Est. £60-£80

136. An as mint set of fiddle pattern table forks, dessert forks, dessert spoons and table spoons. London 1900. By MB& Co. Approx. 760 grams. Est. £200-£250

137. A fiddle and thread soup ladle. London 1832. By GA. Approx. 315 grams. Est. £120-£150

138. A set of five OE dessert forks. London 1819. By WC. Approx. 190 grams. Est. £60-£80

139. A set of five fiddle pattern dessert forks. Exeter 1843. by JS. Approx. 185 grams. Est. £60-£80



140

140. A good matched pair of silver hollow grouse with hinged wings, lift off heads on outstretched feet and textured bodies. Est. £2500-£3000

141. A good quality four piece Adams' style tea service decorated with flowers and swags. Sheffield 1911. By John Round. Approx. 1450 grams. Est. £700-£800

142. An Arts and Crafts pedestal bonbon dish with two handles. Birmingham 1910. Approx. 200 grams. Est. £80-£100

143. A good heavy six slice toast rack on four bun feet. London 1931. By C Harris & Sons. Approx. 205 grams. Est. £120-£140



144

144. A good quality bullet shaped tea set with engraved decoration. London 1932. By Goldsmiths and Silversmiths. Approx. 1275 grams. Est. £550-£600

145. A good quality Victorian bright cut three piece tea service. London 1879. By Lambert. Approx. 1100 grams. Est. £500-£600

146. A heavy Georgian style christening cup with gilded interior. London 1880. By R&S. Approx. 190 grams. Est. £180-£220



147

147. A Continental knife with decorated sheath. Est. £80-£100

148. A heavy circular christening bowl, the interior decorated with a crest on pedestal base. London 1907. By JW & JCW. Approx. 260 grams. Est. £180-£220

149. A good quality heavy cast Irish cruet set consisting of four salts, four peppers, and two mustards. Dublin 1930. By LA. Approx. 1900 grams. Est. £1000-£1200

150. A large engine turned plated table lighter. Est. £50-£60

151. A heavy cast paperweight in the form of a westernised sphinx on wavy base with steel inter liner, presented on 4th February to P Howard 1891. London 1891. By Lambert of Coventry Street. Approx. 1600 grams. Est. £1500-£2000

152. A heavy Georgian chased pepper decorated with leaves, scrolls and flowers. London. By IN. Approx. 95 grams. Est. £100-£150

153. A pair of unusual menu holders in the form of a gate with running rabbit. London 1905. By CM&S. Approx. 52 grams. Est. £80-£100

154. A Georgian caddy scoop with banded agate handle. Birmingham 1813. By JW. Est. £40-£60

155. A Victorian hinged top vinaigrette with pierced grill. Birmingham 1853. By ES. Est. £80-£100

156. An attractive Georgian silver gilt vinaigrette with pierced hinged top. London 1789. By VWT. Est. £150-£200

157. A rectangular bright cut snuff box with hinged top. Birmingham 1852. By Y&WV. Est. £50-£60

158. An early bright cut vinaigrette with hinged top. Birmingham 1816. By C&B. Est. £150-£200

159. An attractive rectangular snuff box decorated with flowers and leaves. Birmingham 1829. By ES. Est. £120-£150

160. A rectangular engine turned snuff box with floral thumb piece. London. By CR. Est. £60-£80

161. A miniature hinged top vinaigrette with bright cut decoration and loop top. Birmingham 1859. By AT. Est. £50-£60

162. A tall Cartier pepper grinder with silver mounts. Approx. 40 cms high. Est. £400-£500

163. A large salver on four scroll feet with pie crust border. Sheffield 1917. By Thomas Bradbury. Approx. 2065 grams. Est. £850-£900



167-171



164

164. A good cut glass claret jug, the top embossed with scrolls and leaves and pierced thumb piece. Sheffield 1879. By W&G Sissons. Est. £800-£900

165. An impressive pair of triple candlesticks mounted as antler horns on fluted bases. Approx. 64 cms high. Est. £300-£400

166. A heavy King's pattern basting spoon. London 1857. By SH&DC. Approx. 200 grams. Est. £70-£80

167. A set of four King's pattern dessert forks together with two King's pattern dessert spoons, two tablespoons, tongs and a sifter spoon. Various dates and makers. Approx. 847 grams. Est. £150-£200

168. A set of four King's pattern tablespoons, a pair of ladles, and a pair of table forks. London 1864. By WC. Approx. 765 grams. Est. £150-£200

169. A heavy set of six King's pattern table forks, three teaspoons, and one ladle. London. (Various dates.) By WE. Approx. 840 grams. Est. £180-£220

170. A part canteen of King's pattern cutlery consisting of sixteen table forks, sixteen dessert forks, five tablespoons, six dessert spoons. London 1839 / 1841. By WT. Approx 3750 grams. Est. £850-£900

171. A set of six King's pattern table forks, a dessert fork, a set of twelve dessert spoons, nine teaspoons, a pair of serving spoons, and a pair of salt spoons. London. Various dates. By GA. Approx. 2020 grams. Est. £600-£700



172

172. A good quality Continental silver gilt casket with shell thumb piece and lined interior decorated with seated man and swirl reeded body. Approx. 410 grams. Est. £500-£600

173. A part canteen of fiddle pattern cutlery with "Post Nubila" armorial, consisting of six table forks, six dessert forks, and six dessert spoons. London 1863. By GA. Approx. 1100 grams. Est. £300-£350

174. A pair of Georgian OE table spoons, with "Post Nubila" armorial. London 1784. By RC. Approx. 175 grams. Est. £30-£40

175. A Georgian OE basting spoon with "Post Nubila" armorial. London 1783. By GJ. Approx. 90 grams. Est. £80-£100

176. A heavy OE pattern soup ladle with "Post Nubila" armorial. London 1784. By RC. Approx. 195 grams. Est. £100-£150

177. A pair of OE basting spoons with "Post Nubila" armorial. London 1784. By RC. Approx. 205 grams. Est. £200-£250

178. A set of four Georgian Adams' style boat shaped salts on pedestal base with "Post Nubila" armorial. London 1801. By IB. Approx. 240 grams. Est. £150-£200

179. A large rare Georgian salver with beaded rim on three ball and claw feet with "Post Nubila" armorial. Approx. 30cms in diameter. Approx. 455 grams. London 1784. By Elizabeth Jones. (Marked EI). Est. £500-£600



179

180. A good quality George I tapered coffee pot with reeded decoration, and crested side. London 1715. By Paul Crespin. Approx. 820 grams. Est. £1000-£1200

181. A heavy King's pattern basting spoon. London. By SH&DC. Approx. 202 grams. Est. £100-£150

185. A pair of Sheffield plated telescopic candlesticks. Est. £30-£40

186. A pair of plated coasters with wavy bead rims. Est. £20-£30

187. A cased horn and silver mounted carving set. Est. £20-£30



182

182. A rare set of seven tablespoons by Hugh Ross of Tain, 1735 / 36, together with a pair of matching serving spoons. Armorial to reverse of finials; "Luceo non uro". St. Duthac hallmarks. Approx. 500 grams. Est. £1000-£1500

183. A good cased walnut plated travelling set. Est. £40-£50

184. A cased plated travelling dressing table set with engraved decoration. Est. £40-£50

188. A boxed pair of good quality fish servers with carved handles in the form of a serpent. Est. £80-£100

189. An oval bead decorated entrée dish. Est. £40-£50

190. A pair of plated coasters attractively embossed with leaves and flowers. Est. £30-£40

There will now be a 15 minute break.



Jewellery

201. An attractive diamond two stone Art Deco cluster ring set in two colour gold and platinum. Est. £200-£300

202. A 9ct curb link chain. Approx. 11 grams. Est. £60-£70

203. A heavy 9ct fancy link chain with engraved decoration. Approx. 30 grams. Est. £200-£250

204. A 9ct curb link bracelet with ring clasp. Approx. 12 grams. Approx. Est. £80-£120

205. A pair of attractive opal faceted drop earrings together with a diamond cluster ring mount, etc. Est. £80-£100

206. A heavy silver handmade wedding band together with an unusual silver blue stone ring. Est. £25-£30

207. A ruby and diamond three stone gypsy set ring in 18ct mount. Approx. 3 grams. Est. £30-£40

208. An 18ct circular sapphire and diamond cluster ring in two colour gold. Approx. 5 grams. Est. £50-£60

209. An 18ct and platinum five stone diamond ring. Approx. 3 grams. Est. £40-£50

210. A quantity of 9ct scrap gold. Approx. 15 grams. Est. £100-£150

211. A 1911 George V half sovereign. Est. £60-£70

212. An attractive gold and silver ruby, emerald and rose diamond bow brooch. Est. £300-£350



213

213. An attractive half pearl pendant / brooch with loop top and central pearl spray. Est. £350-£400

214. A gold seven stone crescent brooch in claw mount. Est. £150-£200

215. A 15ct sapphire and diamond brooch with floral and ball decoration. Approx. 5 grams. Est. £90-£100



216

216. A 9ct belcher link half guard chain with ring clasp together with engraved quizzing glass. Approx. 20 grams. Est. £80-£120

217. A 9ct circular link necklace with ring clasp together with two gold rings. Approx. 20 grams. Est. £120-£150

218. A 9ct circular brooch in the form of a flying duck with enamelled head, and textured body. Approx. 6 grams. Est. £140-£180

219. An attractive circular ruby and diamond cluster ring in rose gold band with rub over setting and claw mount. Est. £800-£900

220. A heavy 18ct single stone diamond ring with rub over mount. Approx. 5 grams. Est. £300-£350

221. A small pearl and green stone brooch in 9ct gold. Est. £20-£30

222. A quantity of 9ct and other scrap gold. Approx. 14 grams. Est. £100-£120

223. Two 9ct watch medallions with loop decoration. Approx. 10 grams. Est. £60-£80

224. A 9ct ball decorated target brooch with locket back. Approx. 8 grams. Est. £40-£60

225. A watch key, padlock, gold brooch, etc. Approx. 18 grams. Est. £100-£120



226

- 226.** A pair of attractive Antique drop earrings with ball decoration and loop tops, in teardrop design. Est. £100-£120
- 227.** An 18ct diamond five stone half hoop ring in boat shaped mount. Approx. 5 grams. Est. £60-£70
- 228.** An unusual heavy silver fancy link bracelet of nautical design with concealed clasp. Est. £150-£200
- 229.** A pair of good quality stylish emerald and diamond dress earrings of square form. Est. £250-£300
- 230.** A good 18ct white gold ring with claw mount and baguette cut shoulders. Approx. 6 grams. Est. £70-£80
- 231.** A good quality French cocktail ring with pearl central stone in rope twist decorated 18ct band. Est. £700-£800
- 232.** A heavy 9ct belcher link guard chain set with fobs. Approx. 34 grams. Est. £200-£250
- 233.** A good quality platinum zircon and diamond dress ring in claw mount. Approx. 6 grams. Est. £150-£200
- 234.** A 9ct chased decorated keeper ring. Approx. 5 grams. Est. £40-£50
- 235.** A group of three unusual plated pendants in the form of shells. Est. £10-£20
- 236.** A graduated string of good pearl beads with 9ct clasp. Est. £240-£260

237. A good diamond and platinum fancy single stone ring in claw mount, accompanied by certificate stating: 1.88 carats, fancy light yellow. SI2. Est. £2500-£3000

238. A pair of jadeite circular ear studs in claw mount. Est. £240-£260

239. A pair of 18ct ruby and diamond oval ear studs in claw mount. Est. £220-£240

240. An Antique oval amethyst and diamond brooch in 15ct gold. Est. £100-£120



241

241. An 18ct Masonic band ring paved with numerous diamonds. Approx. 3 grams. Est. £180-£220

242. A good Antique crystal stick pin mount in the form of a dog, with rose diamond border and fitted box. Est. £400-£500



243

243. An attractive aquamarine and diamond seven stone cluster ring. Est. £350-£400

244. An impressive platinum mounted brilliant cut diamond ring, weighing 2.51 carats, in four claw setting. Certificate stating H colour. Est. £15,000-£20,000

245. An early Victorian cabochon garnet heart-shaped ring on gold band. Est. £500-£600

246. A Victorian silver and blue enamelled necklace with push clasp. Est. £700-£800

247. A platinum and diamond Art Deco cluster ring. Est. £700-£800

248. A pair of gold and topaz drop earrings with loop tops. Est. £650-£700

249. A diamond five stone ring together with a diamond full eternity ring. Est. £100-£150

250. A diamond five stone half hoop ring in 18ct claw mount. Est. £150-£200

251. A group of four 18ct stone set rings. Approx. 11 grams. Est. £100-£120

252. A small gold engine turned tooth pick. Est. £20-£30

253. A 9ct framed cameo of a lady's head with loop top. Est. £100-£120



254

254. An oval gilt framed cameo of a gent in seated position. Est. £50-£60

255. An oval 9ct framed cameo of a girl and eagle. Est. £80-£100

256. A small oval shell cameo of a lady's head in 9ct frame. Est. £40-£50

257. A modern silver hinged bangle with central amber panel and floral decoration. Est. £25-£30



258

258. A pair of attractive circular pearl and diamond ear clips in 18ct white gold. Est. £450-£500



259

259. An attractive white gold bracelet set with six carved jade panels and concealed clasp. Est. £500-£600

260. A pair of Antique diamond single stone ear studs in two colour claw mount. Est. £380-£420

261. An attractive gold and citrine two row necklace with chain suspension and concealed clasp. Est. £380-£420

262. A platinum and diamond three stone ring with engraved setting. Est. £1400-£1800

263. A diamond single stone ring in platinum claw setting. Est. £1300-£1500

264. A good diamond full eternity ring in engraved white gold band. Est. £450 - £500



265, 266

265. A good Antique steel crested triple spinning fob. *Est. £150-£200*

266. A steel spinning fob depicting William Shakespeare, with pierced decoration and ball top. *Est. £100-£150*



267

267. An attractive amethyst and enamelled cloak clasp mounted in silver with suspension chain and clip back. *Est. £400-£500*

268. A good diamond three stone ring with carved claw mounts in 18ct and platinum setting. *Est. £300-£350*

269. A good quality 18ct white gold three row diamond half eternity ring. *Est. £250-£300*



270

270. An attractive Art Deco aquamarine single stone ring mounted with tapered diamond shoulders to claw mount in platinum band. *Est. £1400-£1600*

271. A pair of attractive Antique enamel and rose diamond circular ear studs. *Est. £250-£300*



272

272. An attractive small diamond daisy head cluster ring in gold band. *Est. £350-£400*

273. A bag containing a quantity of silver and other earrings, necklaces etc. Approx. 90 grams. *Est. £30-£40*

274. A bag containing a large quantity of 9ct scrap gold. Approx. 58 grams. *Est. £400-£450*

275. A 14ct wedding ring together with a 14ct necklace etc. Approx. 7 grams. *Est. £80-£90*

276. An 18ct wedding ring together with two other 18ct rings. Approx. 6 grams. *Est. £90-£100*

277. A small 10ct college ring. Approx. 6 grams. *Est. £40-£50*

278. A 9ct rectangular red stone pendant on fine link chain. *Est. £20-£30*

279. An attractive 18ct diamond single stone mounted as a pendant on gold fine link chain. Approx. 10 grams. *Est. £400-£500*



280

280. An unusual French brooch in the form of a butterfly in gold mount. *Est. £250-£300*



281

281. An Antique enamelled mourning ring with hair centre, dated 1797. *Est. £300-£350*

282. An Antique pendant in the form of a bowl of flowers with emerald, ruby, sapphire and pearl decoration. *Est. £500-£600*

283. A silver gilt banded agate Scottish brooch with central heart shaped stone and crown finial. *Est. £200-£250*

284. A pair of unusual modern 18ct drop earrings with tassel decoration. Approx. 11 grams. *Est. £240-£260*

285. An attractive Antique aquamarine drop necklace with gold links and ball decoration to concealed clasp. *Est. £1000-£1200*

286. An attractive sapphire and diamond oval cluster ring in 18ct two colour claw mount. *Est. £1200-£1400*

287. A string of carved coral beads with gold barrel clasp. *Est. £100-£120*

288. A double string of pearl beads with rose diamond gold clasp. *Est. £150-£200*

289. An Antique shell cameo of a lady's head in gold mount. *Est. £150-£200*

290. A pair of attractive gold and diamond ear pendants in the form of leaves. *Est. £400-£450*

291. A silver gilt David Andersen enamel butterfly brooch. *Est. £100-£120*



292

292. A small David Andersen enamel and silver brooch in the form of a butterfly. *Est. £40-£50*

293. A moonstone and ruby nine stone ring in claw mount. *Est. £150-£200*

294. A pair of unusual Victorian gold and engraved lady's petticoat skirt lifters. *Est. £120-£150*



295

295. A moonstone and pearl heart shaped brooch decorated with leaves. *Est. £180-£22*



296

296. An attractive emerald and diamond three stone ring, mounted with two triangular diamonds to shoulders, in 18ct two colour gold. Est. £500-£600



301

301. An Antique pearl and turquoise gold ring in 18ct. Approx. 5 grams. Est. £50-£60

302. A string of cultured pearl beads together with pearl ear studs. Est. £20-£30

303. A small gold cameo of a lady's head with loop top. Est. £20-£30

304. A good quality 15ct pearl pendant brooch with loop and cluster centre. Est. £350-£400



305

305. A pair of 18ct heavy boat shaped ear clips in white gold. Approx. 14 grams. Est. £450-£500

306. A stylish 15ct turquoise and pearl pendant with loop top. Est. £300-£350

307. BVLGARI: A pair of heavy stylish ear pendants in fitted box and travel case. Est. £550-£600



308

308. A good quality carved hard stone cameo of a lady's head with pearl border set in gold. Est. £1100-£1200

309. A good quality diamond seven stone ring in 18ct band. Est. £500-£600

310. An unusual cabochon ruby six stone half eternity ring in 18ct. Est. £240-£280

311. A heavy 18ct white gold cabochon ruby ring. Est. £400-£450

312. An 18ct ruby and diamond two colour gold cluster ring in claw mount. Est. £180-£220



313

313. A pair of diamond single stone ear studs in 18ct claw mount. Est. £1000-£1200



314

314. A well carved amber panel of a dragon with textured body. Approx. 6.5 cms long.
Est. £700-£800

315. A rose diamond and gold circular cluster stick pin. *Est. £50-£60*



316

316. A large diamond five stone ring in 18ct heavy claw mount. *Est. £380-£420*

317. A platinum Art Deco nine stone cluster ring with pierced decoration and engraved shoulders. *Est. £700-£800*



318

318. An attractive gold picture of a lady with loop top and reeded sides. Polack. Approx. 4 cms.
Est. £400-£500

319. An unusual pendant with locket centre mounted with ivory skull in gold frame on fine link chain. *Est. £200-£250*



320

320. A good quality Art Deco emerald and diamond cluster ring. Approx. 9 grams.
Est. £500-£600

321. A heavy 18ct Georg Jensen crossover ring.
Est. £350-£400

322. An unusual 18ct Georg Jensen fusion ring garniture comprising three interlocking bands.
Est. £650-£700

323. An attractive high carat ruby and half pearl pendant / necklace. Est. £160-£180

324. A pearl 14ct line bracelet with concealed clasp. Est. £180-£200

325. A cased pair of good quality 9ct scissors. Approx. 40 grams. Est. £500-£600

326. A good quality cased extending quill / pencil with bloodstone finial, heavily embossed with leaves and acorns. Est. £250-£300

327. An unusual Continental large amethyst seven panel pendant / necklace with boxed concealed clasp, and matching five panel bracelet.
Est. £1000-£1500

328. A good double string of pearl beads with gold clasp. Est. £60-£80

329. A large diamond single stone ring with attractive pavé setting to rub over mount in platinum band. Approx. 2.25 carats.
Est. £5500-£6000

330. An Antique micro-mosaic drop pendant decorated with flowers and leaves, the locket back with hinged top. Est. £700-£800



331

331. An attractive diamond cluster ring with pierced rub over mount on platinum band.
Est. £800-£900

332. A modern eight stone sapphire and diamond crossover ring in white gold claw mount.
Est. £350-£400

333. An unusual 9ct pendant in the form of a miner with hard hat. Approx. 12 grams.
Est. £100-£120

334. A quantity of silver seals, brooches, etc. Approx. 28 grams. Est. £20-£30

335. A group of four gold mounted spinning fobs. Approx. 25 grams. Est. £40-£50

336. A bag containing numerous silver rings, pendants etc. Approx. 45 grams. Est. £20-£30

337. A bag containing numerous silver and other brooches, clips, etc. Approx. 70 grams.
Est. £30-£40

338. A silver heavy curb link charm bracelet. Approx. 68 grams. Est. £30-£40

339. A heavy gold and carved agate ring together with a diamond crossover ring and earrings. Approx. 14 grams. Est. £60-£70

340. A group of five various gold brooches. Approx. 8 grams. Est. £40-£50

341. A large attractive solitaire diamond ring weighing approx. 2.4 carats in claw mount on platinum shoulders set with two pear shaped diamonds weighing approx. 0.25 carats each.
Est. £7500-£8000



331

342. An Antique carved coral cameo ring on gold band with single stone diamond top.
Est. £250-£300

343. An unusual yellow diamond Art Deco crossover ring in platinum claw mount.
Est. £800-£900



344

344. A pink topaz and diamond five stone ring in gold claw mount. Est. £200-£250



345

345. A pair of unusual micro-mosaic circular gold mounted ear studs, in the form of flies.
Est. £300-£400

346. An attractive stylish pendant brooch with diamond leaves to emerald teardrop, in gold and platinum. Est. £700-£800



347

347. A sapphire and diamond seven stone half hoop ring in 18ct. Est. £350-£400

348. A small sapphire and diamond seven stone half hoop ring in gold mount. Est. £100-£150



349

349. An Antique miniature lady's vinaigrette, the hinge decorated with sapphires and diamonds on loop top. Est. £250-£300



350

350. A heavy 18ct cherub decorated crescent brooch set with clouds and single diamond in claw mount. Approx. 14 grams. Est. £380-£420

351. A large graduated diamond five stone half hoop ring in 18ct claw mount. Est. £500-£600

352. A pair of diamond single stone ear studs in white gold claw mount weighing approx. 0.5 carats each. Est. £1500-£2000

353. A heavy platinum single stone gypsy ring, the diamond with rub over mount. Est. £300-£400

354. CARTIER: An attractive diamond single stone brilliant cut ring with baguette cut shoulders. Signed on platinum band. Est. £4500-£5000

355. An emerald and diamond Art Deco brooch in two colour gold. Est. £250-£300

356. An attractive platinum, sapphire, and diamond brooch. Est. £600-£650

357. A rose diamond and turquoise pendant / necklace on fine link gold chain. Est. £450-£500



358. An important good quality Art Deco style ruby and diamond cocktail necklace designed as a collar with two rows of cushion shaped rubies, bordered by a row of baguette diamonds to inner edge, and a row of brilliant cut diamonds to outer edge. The fourteen panel collar is set in 18ct white gold with concealed clasp. *Est. £20,000-£30,000*



359. CARTIER: An attractive Art Deco style bracelet of panel design, the links inset with brilliant cut diamonds to concealed clasp. *Est. £8,000-£10,000*

Watches



362. A stainless steel lady's Tudor Princess Oysterdate wristwatch on expanding strap. Est. £100-£120

363. A gent's slim 9ct wristwatch on leather strap. Est. £30-£40



364

364. An attractive lady's enamel pendant ball watch on matching chain with gold clasp. Est. £80-£100

365. A lady's 9ct Accurist watch with concealed clasp. Approx. 15 grams. Est. £100-£150

366. A lady's Gucci stylish wristwatch. Est. £120-£140

367. An Antique 18ct lever pocket watch by Henry Ellis of Exeter, together with gold key. Est. £400-£450

368. A large pair case pocket watch by Adams of London. Est. £220-£250

369. A gent's stainless steel Breitling wristwatch with blue multi dial and leather strap. Est. £1100-£1200

370. A good quality 18ct full hunter pocket watch, the body attractively engraved with flowers and leaves. By Waltham. Est. £700-£800

371. Two gilt full hunter pocket watches with enamel dials. Est. £30-£40

372. A good silver open face pocket watch by Thomas Russell together with a heavy curb link double watch albert. Est. £70-£80

373. A lady's Omega wristwatch together with a gent's Rone, and one other. Est. £40-£50

374. A lady's cocktail watch together with two others. Est. £20-£30

375. A gent's Bulova gilt wristwatch complete with original paperwork and service history. Est. £250-£300

376. A group of four various petrol lighters. Est. £30-£40

377. A good silver gilt Dunhill lighter with engine turned textured body and hinged top. Est. £250-£300

There will now be a 15 minute break.



367

Pictures





389

381. An attractive oval painting of a girl on stony landscape in gilt frame. Approx. 54 cms x 48 cms. Est. £150-£200



382

382. Oil on canvas depicting Apollo and Daphne. Approx. 51 cms x 56 cms. Est. £600-£800

383. An oval painting of Madonna and child in oval gilt frame. Approx. 55 cms x 48 cms. Est. £100-£150

384. An oil painting of cottage scene with horses and trees in gilt frame. Approx. 49 cms x 39 cms. Est. £100-£150

385. A small oil painting of a street scene in gilt frame. Approx. 22 cms x 19 cms. Est. £100-£150

386. A portrait of a lady with white lace bonnet in gilt frame. Approx. 23 cms x 24 cms. Est. £50-£60

387. A portrait of a bearded man. Oil on board. Square oak frame. Approx. 24 cms x 21 cms. Est. £50-£60

388. A gilt framed oval portrait of a gentleman in an armchair holding a gold box. Approx. 24 cms x 20 cms. Est. £100-£150

389. A rectangular oil of the White Cliffs of Dover at low tide. Signed: J Buchanan. 1865. Approx. 56 cms x 29 cms. Est. £200-£300

390. A small square portrait of a lady in ebony frame. Approx. 22 cms x 21 cms. Est. £40-£50

391. An oval miniature of a lady. Signed: Waite 1802. Approx. 9 cms x 7 cms. Est. £200-£300

392. An oval miniature of a lady with lace bonnet. Approx. 12 cms x 9 cms. Est. £40-£50

393. An attractive miniature oval gilt framed oil painting on copper of a gentleman. Approx. 6 cms x 4 cms. Est. £30-£40

394. A decorative silk embroidery in an oval gilt frame, depicting Lotte at Werter's grave (taken from "The sorrows of Werter" by Goethe 1774) Circa 1860. Approx. 27 cms x 21 cms. Est. £100-£150



395

395. John Faulkener: A Road Scene, Co. Donegal. 1877. Oil on canvas. Signed and dated. Approx. 39 cms x 60 cms. Est. £700-£800

396. John Hoar: An Evening at Whitechapel looking towards Dartmoor. Approx. 48 cms x 31 cms. Est. £150-£200



397

397. Three watercolour scenes of Dartmoor, two entitled "Haytor From The Bovey Side" and "Tavy Cleave" respectively, and one other beach scene, by Exeter artist Frederick Parr. Various sizes. All signed. Est. £100-£150

398. Four watercolours by Exeter artist, Frederick Parr, one depicting Steps Bridge on Dartmoor, and another entitled "The Tavy, Tavy Cleave". Various sizes. Est. £100-£150



399

399. Three watercolour paintings by Exeter artist, Herbert William Hicks, all depicting Dartmoor scenes, one entitled "Leather Tor". Various sizes. Est. £150-£200

Clocks & Collectables





401

401. An Edwardian oak mantle clock with three train striking movement and quarter chiming on eight bells together with wall bracket.
Est. £200-£250



402

402. An unusual massive French carriage clock with white enamel dial and compass / thermometer top. *Est. £500-£600*



403, 404, 407

403. A good oval brass carriage clock by Drocourt on pedestal base, numbered 9682, together with original key and leather travelling case. *Est. £400-£500*

404. An attractive French brass carriage clock with engraved decoration, white enamel dial, striking repeater movement and original lever escapement. *Est. £250 - £300*

405. A large brass carriage clock on bracket feet with swing handle. *Est. £40-£50*

406. A small oval carriage clock with domed sides and swing handle. *Est. £30-£40*

407. A miniature brass carriage clock with white enamel dial and swing handle. *Est. £50-£60*



408

408. A rare and unusual travelling sundial / compass by Pierre LeMaire of Paris in fitted box. *Est. £800-£1000*

409. A small flintlock pistol with oak handle. *Est. £30-£40*



410

410. An unusual Mamiya-16 Automatic camera in original case. Est. £30-£40



411

411. An unusual resin pipe in the form of a bird's head, with stone eye and fitted box. Est. £30-£40

412. A boxed pair of Parker pens together with more Parker and other pens. Est. £20-£30



413

413. An unusual carved Netsuke of man and child together with three others. Est. £100-£150

414. A carved ivory picture mount together with a cross, needle case etc. Est. £20-£30



415

415. A stylish French bronze of a dancer on beadwork base. Signed Lorenzl. Numbered 5331-72. Approx. 10 cms high. Est. £150-£200



416. A group of six good quality Antique steel keys. Est. £40-£50



417

417. A good quality gilt cup decorated with leaves and flowers. Est. £40-£50



418

418. Two signed letters by Winston S. Churchill on 10 Downing Street, Whitehall paper together with an envelope with the same address to reverse, addressed to a Mr & Mrs Pam, The New Inn, Newbridge-On-Wye, Radnorshire. Est. £250-£300

419. A cast iron "Jolly Negro" mechanical bank with hat. Est. £20-£30



420

420. A small French porcelain doll with articulated limbs, wearing lace dress. Marked S F B J 60 Paris to back of head. (In French: Société Française de Fabrication de Bébés et Jouets). Est. £30-£40

421. A French musical box with floral inlay. Est. £150-£200



422

422. A carved bone mounted walking stick together with a horse whip etc. Est. £30-£40

423. An Eastern style walking stick decorated with a snake together with two others. Est. £20-£30

424. An unusual walking stick in the form of a bulldog's head. Est. £30-£40

425. An unusual hardwood walking stick with turned and ball effect. Est. £30-£40

426. Two ivory mounted walking sticks with silver bands. Est. £20-£30

427. A good quality lady's umbrella with silver horse's head handle. London. By JD. Est. £350-£400

428. Two unusual heavy Eastern tribal walking sticks. Est. £30-£40

429. Newlyn: A circular tray of hammered effect, stamped Newlyn to back. Est. £30-£40



433

430. A heavy brass bust of a lady, signed Vanderstreter. Approx. 34 cms. Est. £300-£400

431. An Antique lacquered policeman's truncheon, dated 1823. Est. £30-£40

432. A heavy brass skillet, the handle inscribed, Cox of Taunton. Est. £30-£40

433. A brass and antler desk set comprising candlesticks, inkwell and letter opener. Est. £250-£300

434. A large heavy copper samovar on turned handles with ball feet. Est. £40-£50

435. A stick barometer / thermometer in mahogany with loop top. (Insecure glass panel.) Est. £50-£60

436. A good mahogany stick barometer with string inlay and silvered dial. By Galli and Maggi of Exeter. Est. £250-£300

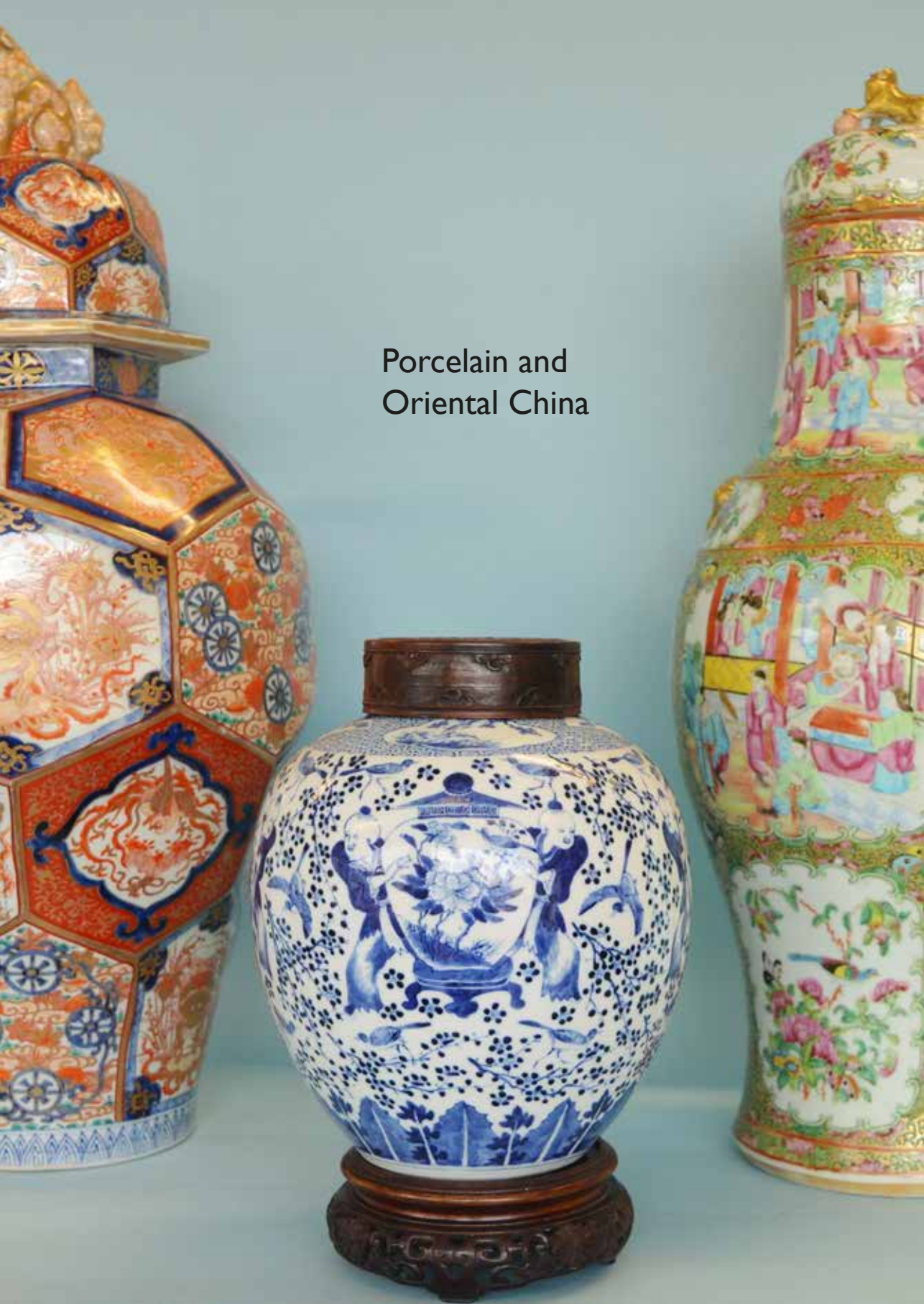
437. A good brass and iron hall stand. Est. £40-£50



438

438. An unusual mounted inkwell in the form of a bulldog with brass limbs and hinged top. Est. £80-£100

Porcelain and
Oriental China



439. A Chinese export tureen and cover with brass mounts. With extensive damage. Est. £70-£80

440. A Chinese multi ground ginger jar with scroll decoration. Est. £60-£70

441. A Chinese circular wall plate with flower and fruit decoration. Est. £50-£80



442

442. An attractive Royal Worcester ewer with textured handle and gilded body. Est. £40-£50

443. An attractively painted two handled Meissen cup. Slight damage. Est. £50-80

444. A Newhall teapot with lift off cover, together with one other and a cream jug. Est. £60-£80

445. An attractive gilt and floral decorated boat shaped Spode tea service. Est. £40-£50

446. A pair of attractive Meissen vases decorated with flowers and gilding around scenes with figures. Est. £80-£100

447. An attractive garniture of three vases decorated with cherubs and gilding. Est. £150-£200

448. An attractively decorated trinket box on hinge top and brass stand. Est. £20-£30



449

449. An attractive Coalport urn decorated with flowers. Approx. 14 cms high. Est. £30-£40



450

450. A Carlton ware Guinness advertising Toucan lamp base. Approx. 21 cms high. Est. £30-£40



451

451. An attractive pair of decorative 19th Century Meissen figures with gilded bases, both numbered 25. Approx. 14 cms high. Est. £150-£200



452

452. An attractive green decorated teapot on hardwood stand. *Est. £20-£30*

453. An early porcelain teapot decorated with flowers and leaves with silver spout. Approx. 16 cms high. *Est. £50-£60*

454. A pair of copper lustre jugs together with two others. *Est. £30-£40*

455. A Meissen style gilt decorated comport together with fourteen matching plates, and a square serving plate. The border with flowers and leaves surrounding a central romantic scene. *Est. £200-£300*

456. An attractive matched pair of Limoges cannisters with gilt tops and floral decoration. *Est. £40-£50*



456

457. A set of four Newhall square pub dishes. *Est. £30-£40*

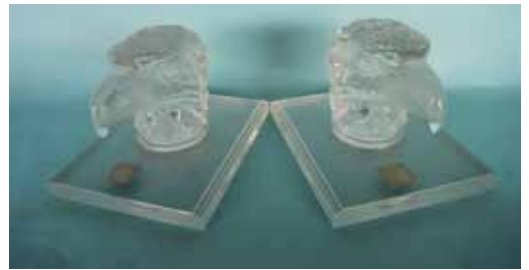
458. A Wedgwood blue and white jardiniere together with a vase and cover, and a pot pourri. *Est. £40-£50*

459. A decorative Continental lamp mounted with cherubs, together with one other, and a pair of candlesticks. *Est. £80-£100*

460. An attractive Royal Albert part dinner service; Elgin pattern. *Est. £40-£50*

461. A pair of cranberry cut glasses together with a caster, bowls etc. *Est. £30-£40*

462. An attractive cranberry glass oil lamp with engraved matching shade. *Est. £80-£100*



463

463. A pair of heavy Lalique glass paperweights / bookends each mounted with an eagle's head and frosted top to step base. Signed Lalique. *Est. £150-£200*

464. An impressive glass figure of a dolphin on matching pedestal, by Daum of France.
Est. £80-£100

465. A glass figure of a flying bird with outstretched wings, by Daum of France.
Est. £50-£60



466

466. An Oriental red lacquer koro on hardwood base carved with animals. *Est. £60-£70*

467. A square dish decorated with flowers and birds. *Est. £20-£30*

468. A Chinese red ground dish and cover mounted with figures and scrolls. Approx. 9 cms high x 12 cms across. *Est. £30-£40*

469. A large oval panel of a Chinese lake scene decorated with trees and mountain landscape. Approx. 35 cms across. *Est. £250-£300*

470. An Imari preserve dish in the form of a fish. Approx. 35 cms across. *Est. £20-£30*

471. A pair of Eastern pictures set with trees in carved hardwood frame. *Est. £300-£350*

472. A pair of Canton circular wall plates with gilt rim. Approx. 21.5 cms in diameter. *Est. £30-£40*

473. A group of five Chinese Canton style plates decorated with flowers and leaves. *Est. £50-£60*

474. An attractive Chinese blue and white ginger jar decorated with figures and birds on hardwood stand with hardwood lid. Approx. 23 cms high. *Est. £300-£400*

475. A pair of Kutani ground vases decorated with flowers, leaves and figures. Approx. 25 cms high. *Est. £100-£150*

476. A large figure of a geisha with a boy. Approx. 37 cms high. *Est. £40-£50*

477. An unusual tall figure of a China man in floral decorated outfit. Approx. 48 cms high. *Est. £80-£100*

478. An attractive pair of miniature dishes with dragon centres together with other small items. *Est. £30-£40*

478A. Four 20th Century Chinese vases. *Est. £50-£60*

479. An attractive blue and white Chinese ginger jar on stand decorated with flowers and leaves on hardwood stand. (Converted to a lamp.) Approx. 21 cms high. *Est. £150-£200*

480. A cloisonné lacquer caddy with hinge top and bracket feet, together with a green bowl and lidded box. *Est. £40-£50*



481

481. An unusual bronze vase in the form of a carp with textured body and open mouth. Approx. 21 cms high. *Est. £150-£200*

482. A cloisonné circular bowl together with other cloisonné wares. *Est. £30-£40*

483. An Imari vase on hardwood stand. Approx. 18 cms high. *Est. £20-£30*

484. An attractive Chinese fruit bowl decorated with butterflies, flowers and insects, the underside decorated with multi-coloured petal shapes. Approx. 31.5 cms across. *Est. £100-£150*



485

- 485.** Two good Chinese decorative fancy shaped dishes, with attractive floral decoration and gilded border. Approx. 25 cms across. *Est. £100-£150*
- 486.** A good pair of hardwood figures in the form of two elderly gentleman. Approx. 38 cms high. *Est. £80-£120*
- 487.** Two resin figures together with one other. *Est. £30-£40*
- 488.** A circular domed hanging plaque of Chinese ladies. Approx. 13 cms across. *Est. £30-£40*
- 489.** An early blue and white circular dish with boat scene together with other circular dishes and a silver mounted swing handled basket. *Est. £50-£60*
- 490.** A fruit bowl, the side decorated with flowers and herons on hard wood stand. Approx 24 cms across. *Est. £50-£60*
- 491.** A tall stick stand heavily decorated with flowers and leaves and wavy rim. Approx. 62 cms high. *Est. £50-£60*
- 492.** A large Canton vase and cover decorated with figures and lion finial. Approx 61 cms high. *Est. £150-£200*
- 493.** A large blue and white fish bowl planter with floral border decorated with figures. *Est. £100-£200*
- 494.** A large brass and cloisonné planter decorated with flowers. Approx. 23 cms high. *Est. £50-£60*
- 495.** A set of four Chinese decorative plates mounted with figures. *Est. £50-£60*
- 496.** A Chinese decorative plate with gilt rims. *Est. £30-£50*

497. An attractive floral decorated Chinese charger set with bird scenes and floral centre. Approx. 29 cms across. *Est. £50-£60*

498. Two decorative Chinese floral plates, each with leafy border. *Est. £60-£70*

499. An attractive large circular pedestal bowl decorated with various scenes. (Cracked). Approx. 28 cms across. *Est. £40-£50*

500. A large heavy Oriental jardiniere decorated with birds and dragons. Approx. 35 cms across x 29 cms high. *Est. £250-£300*



501, 474, 492

501. A good large Oriental vase and cover with faceted sides profusely decorated with flowers, dragons and birds and Foo dog finial. Approx. 67 cms high. *Est. £300-£400*

502. A quantity of good carved and other hardwood stands. *Est. £50-£60*

503. A good hardwood vase stand with marble inset. *Est. £40-£50*

504. A Chinese famille rose sleeve vase together with a Sampson vase / lamp. *Est. £100-£120*

505. A large Japanese bronze vase decorated with birds and leaves. *Est. £150-£200*

506. An unusual Chinese two handled bronze vase with dragon decorated handles. *Est. £80-£120*

Rugs



507. A modern Persian prayer rug with “Tree of Life” decoration on beige background. Approx. 157 cms x 97 cms. Est. £40-£60

508. A modern Indian rug with Isfahan and circular medallion. Approx. 165 cms x 109 cms. Est. £50-£90



508

509. A modern Indian rug with star medallion and blue background. Approx. 160 cms x 106 cms. Est. £50-£80

510. A Persian rug with diamond decoration on ivory background. Approx. 164 cms x 105 cms. Est. £50-£80

511. An old Turkaman rug with elephant foot design on dark red background. Approx. 214 cms x 150 cms. Est. £50-£80

512. A modern Pakistani Turkaman Ensi design rug. Approx. 184 cms x 126 cms. Est. £40-£60



513

513. An old Hamadan “Tree of Life” design rug on dark blue ground. Approx. 192 cms x 145 cms. Est. £60-£80

514. An Indian rug with medallion on white background. Approx. 195 cms x 127 cms. Est. £40-£60

515. An Indian rug with medallion on white background. Approx. 190 cms x 125 cms. Est. £40-£60

516. An Antique design modern Afghan carpet on beige ground with brick red border. Est. £120-£160

517. An Indian silk rug with panel design. Approx. 206 cms x 134 cms. Est. £50-£80

518. A modern Persian rug with white medallion on blue background. Approx. 115 cms x 192 cms. Est. £40-£60

519. A modern Eastern runner with stripe design. Approx. 295 cms x 78 cms. Est. £30-£40

520. A modern Turkaman rug on brick red background. Approx. 175 cms x 130 cms. Est. £40-£60

521. A small Hamadan runner with seven medallions on red ground. Approx. 200 cms x 63 cms. Est. £30-£50



522

522. A Hamadan runner with floral design on red background. Approx. 287 cms x 82 cms. Est. £40-£60



Furniture



523

523. An Asian painted horse with articulated limbs. *Est. £60-£70*



524

524. A good 19th century walnut veneered bachelors chest with five drawers and folding hinged top. 80 cms high. *Est. £250-£300*

525. A good quality rosewood games table with revolving top, stretcher base and pierced sides. *Est. £150-£200*

526. A Georgian mahogany corner cupboard with moulded frieze and shelved interior. Approx. 106 cms high. *Est. £100-£150*

527. A good Georgian mahogany glazed corner cupboard with satinwood string inlay and fitted interior. *Est. £250-£300*

528. A good Davenport with walnut sloped inlaid top and dummy drawers to one side on turned ball feet. *Est. £200-£250*

529. A good brass companion set together with matching spark guards. *Est. £50-£60*

530. A good mahogany D end table on tapered supports with three leaves. Fully extends to over 2.5 m. *Est. £150-£200*

531. A good quality set of eight (six plus two) mahogany dining chairs of Georgian design with sabre legs and upholstered seats. *Est. £400-£500*

532. A good burr walnut occasional table on reeded columns and string inlay. *Est. £40-£50*

533. An Antique mahogany Georgian washstand with single drawer. *Est. £30-£40*

534. An attractive Continental occasional table, decorated with flowers on rope twist supports. *Est. £30-£40*



535

535. A rosewood hinged top sewing box with satinwood inlay on swirl supports. *Est. £100-£120*

536. An attractive Victorian rosewood music stand with pierced decoration and turned supports. *Est. £150-£200*

537. A good Georgian mahogany two drawer side table on tapered supports. *Est. £50-£60*

538. An antique oak drop leaf dining table with drawers at either end on turned supports. *Est. £150-£200*

539. An oak two drawer mule chest with hinged top and brass handles. *Est. £80-£100*

540. A Georgian mahogany corner washstand with fitted drawer on sweeping supports. *Est. £40-£50*

541. A good set of eight Georgian style dining chairs on tapered supports and reeded decoration. *Est. £150-£200*

542. A good mahogany three tier whatnot with carved decoration on turned supports. *Est. £300-£350*

543. An Antique book press on square tapering supports and single drawer. *Est. £100-£150*

544. A Victorian mahogany sutherland table on twisted supports. *Est. £100-£150*

545. An Edwardian inlaid armchair, decorated with scrolls and flowers on tapering supports. *Est. £80-£100*

546. A small Edwardian sutherland table with crossbanding and shell inlay. *Est. £50-£60*

547. An Edwardian slope top Davenport with four drawers and hinged top. *Est. £70-£80*

548. A good Antique oak corner cupboard with reeded fitted interior and moulded cornice. *Est. £100-£150*

549. A Victorian button back nursing chair with reeded columns and scroll decoration. *Est. £80-£100*

550. A Victorian mahogany scroll decorated hooped back chair with yellow upholstery. *Est. £100-£120*

551. An Antique oak three drawer lowboy with carved decoration on cabriole legs and brass handles. *Est. £120-£150*

552. A large Watcombe pottery terracotta figure of a lady washing a child, inscribed 'YOU DIRTY BOY' by G. Focardi London. *Est. £80-£100*

553. A pair of stoneware planters with reeded decoration to square base. Approx. 32 cms high. *Est. £100-£150*



554

554. An unusual metal framed opaque glass clock face. Approx. 102 cms diameter. *Est. £150-£200*

555. An attractive mahogany travelling paint set with fitted interior and column supports. Approximately 53cms. *Est. £400-£500*

556. No lot.

557. A mahogany hinged top washstand with single drawer and cupboard, having blue and white bowl on tapering supports. *Est. £80-£100*

558. A small Antique oak joint stool with carved sides and stretcher base. *Est. £50-£60*

559. An Antique mahogany three drawer side table with brass handles and plank top. *Est. £60-£80*



560

560. An unusual hand cart made by Parsons of Axminster with hinged metal lid, inscribed: Hoskins and Son, Bakers and Confectioners, Beer. Est. £300-£400

561. A mahogany bow front chest of five drawers with banded inlay and bracket feet. Est. £100-£150

562. A Georgian oak corner cupboard with pebbled glass door. Approx. 93 cms high. Est. £50-£60

563. A set of eight Antique mahogany Hepplewhite dining chairs with red upholstered slip in seats. Est. £150-£200

564. A glazed shop display cabinet with sliding door and porcelain base. Est. £50-£60

565. A painted pine hinged top trunk with two drawers to base. Approx. 85 cms high. Est. £80-£100

566. An attractive papier mâché workbox on stand, the body decorated with flowers and leaves with MOP inserts. Est. £300-£350

567. A massive oak twin pedestal boardroom table on four tapered supports and plank top. Over three metres long. Est. £200-£300

568. A seven drawer tapered Wellington chest, with turned handles and pedestal base. Approx. 105 cms. Est. £80-£100

569. A miniature chest of five drawers with inlaid decoration. Est. £30-£40

570. A small miniature seven drawer Wellington chest on pedestal base. Approx. 52cms. Est. £50-£60

571. A good nest of four tables, with string inlay, on reeded supports. Est. £50-£60

572. An Antique Georgian mahogany caddy on bracket feet with fitted interior. Est. £50-£60

573. A Georgian style serpentine fronted three drawer toilet mirror on bracket feet. Est. £60-£80

574. An unusual oak tapered box on stand of graduating form and hinged top. Est. £80-£100

575. A Georgian high back armchair with stretcher base. *Est. £80-£100*

576. A Georgian mahogany two drawer sideboard with string inlay and tapering supports. *Est. £150-£200*

577. A tall oak breakfront bookcase with scroll mounts on pedestal base. Approx. 160 cms long. *Est. £120-£150*



578

578. An early oak carved back hall chair, with stretcher base and plank seat. *Est. £250-£300*

579. A set of three hardwood vase pedestals. *Est. £40-£60*



580

580. A set of six hoop back mahogany dining chairs with leather button back upholstery and scroll decoration. *Est. £200-£250*

581. A good oak and iron bound plate trunk signed to front 'Okell 6 London'. *Est. £50-£60*

582. An unusual good quality fifteen drawer mahogany specimen cabinet, the drawers fitted with handles on ball and claw feet. Approx. 115 cms high. *Est. £200-£250*

583. A large rosewood two door chiffonier with carved upstand and shelved fitted interior. *Est. £300-£400*

584. A set of six Georgian dining chairs with upholstered seats and cross stretchers. *Est. £150-£200*

585. A good pair of black ebony and gilded bow back armchairs decorated with flowers and swags. *Est. £200-£250*

586. A good quality teak garden bench with slatted back and carved 'T.S.1961' to back rail. Approx. 185 cms long. *Est. £150-£200*

587. A good Victorian extending table on tapered and reeded supports together with two matching leaves. Fully extends to 2.8 metres. *Est. £500-£600*

588. A good fine farmhouse kitchen table with two drawers, tapering supports and plank top. Approx. 275 cms. *Est. £150-£200*

589. A Georgian mahogany four drawer bureau with hinged top and fitted interior on bracket feet. *Est. £150-£200*

590. An oak Gothic sideboard with two drawers and two doors. *Est. £80-£100*

591. An Antique mahogany chiffonier with shelf back. *Est. £150-£200*

592. A painted pine five drawer chest on pedestal base. *Est. £100-£150*

593. An attractive burr wood cupboard with shelved interior on bracket feet. Approx. 108 cms high. *Est. £300-£400*

594. A pair of black ebony and gilded dining chairs. *Est. £40-£50*

595. A good quality mahogany desk with leather inset and brass handles on four cabriole legs, the single drawer fitted with a slide. *Est. £500-£600*



605

596. An attractive Antique oak small kitchen dresser with three drawers, shelves and panelled top. Approx. 175 cms high. Est. £200-£250

597. A good stripped pine two piece kitchen dresser with three glazed doors and three drawers on cupboard base with four ball feet. Est. £250-£300

598. A good Antique pine kitchen dresser with double glass bevelled doors to top and three drawers to base on bracket feet. Est. £350-£400

599. A good stained pine two piece large kitchen dresser with two glazed doors and two drawers to covered base. Est. £250-£300

600. A massive pine kitchen dresser with shelved top and covered base. Approx. 220 cms long x 250 cms high. Est. £300-£350

601. A good quality rosewood sewing table with sliding basket and drawers to side with stretcher base. Est. £200-£250

602. An early yew wood stick back Windsor chair with turned supports and carved back. Est. £200-£250

603. A good oak and yew wood wheel and stick back kitchen carver chair on cabriole legs with bow stretcher. Est. £200-£250

604. A good early oak and elm kitchen chair with bow splat back and solid seat, united by crinoline stretchers on cabriole legs. Est. £150-£200

605. A pair of Regency pollard oak card tables in the manner of George Bullock, with hinged rectangular baize lined tops and reel turned edges. Moulded panel friezes on tapering panel columns and bevelled stepped rectangular plinths upon scroll and reeded block feet. Est. £4000-£5000

606. A large cast iron Barclays Bank emblem. Approx. 87 cms high. Est. £50-£60

607. A massive gilt metal plaque of the Barclays Bank bird with outstretched wings. Approx. 126 cms. Est. £100-£150

608. A good George II mahogany bachelor's four drawer chest on bracket feet with brass drop handles and secret drawer. Approx. 82 cms high x 52 cms deep. Est. £350-£400



609

609. A good eighteenth century walnut veneered chest of five drawers with herringbone banding to edge and quarter veneer with brass handles and bracket feet. Est. £400-£500

610. A 1960's oval table on stylish chrome base.
Est. £40-£50

611. A set of six stylish leather seated Art Deco chairs on chrome bases. Est. £150-£200

612. A set of six stylish chrome upholstered dining chairs on chrome bases with stretcher. Est. £50-£60



613

613. An Otto Wagner bentwood armchair by J&J Kohn. Est. £100-£150



614

614. A large impressive chrome light pendant by Scolari with seven hexagonal panels and thirty six threaded bulb sockets. Approx. 180 cms x 180 cms
Est. £700-£800

615. A good pine triple wardrobe painted with scrolls and cherubs on bracket feet. Est. £150-£200

616. OF LOCAL INTEREST: A tall mahogany cased Grandfather clock with silver dial, signed John Tucker, Exeter. Est. £500-£600

617. A mahogany cased Grandfather clock with painted dial and rope twist columns by J. Conneybear of Ashburton. Est. £200-£250

618. A tall oak and mahogany cased Grandfather clock with gilded dial by Kenchington. Est. £200-£250

619. A tall mahogany and string inlaid Grandfather clock with reeded columns and brass dial by Chris Clarke. Est. £1200-£1400

620. An oak cased Grandfather clock with brass dial by John Mends of Plymouth. Est. £300-£350

621. A tall oak Grandfather clock with brass and silver dial with wavy edges. Est. £200-£250

622. A gilded rectangular mantle mirror with acorn leaf decoration. Approx. 97 cms high. Est. £100 - £150

623. A good gilded three section triple mirror decorated with leaves and flowers. Approx. 140 cms long. Est. £100-£150

624. An imposing giltwood framed wall mirror, the rectangular bevelled plate within heavy fluted moulding. Est. £200-£250

625. An attractive giltwood oval framed wall mirror with leaf and scroll border to lion and crested finial with crown top. Est. £200-£250

626. An attractive circular giltwood convex mirror surmounted by a figure of an eagle with outstretched wings on plateau with leaf and scroll surround. Est. £150-£200

627. A large wall panel in the form of a stags head with outstretched antlers. Est. £50-£60

628. A good pair of iron framed oval top windows inset with mirrored plates. Approx. 150 cms
Est. £100-£150

TERMS AND CONDITIONS OF SALE

Whittons carries on business with bidders, buyers and all those present in the auction room prior to or in connection with a sale on the following general conditions and on such other terms, conditions and notices as may be referred to herein.

I. BIDDING PROCEDURES AND THE BUYER

a) Bidders are required to register their particulars prior to bidding and to satisfy any security arrangements before entering the auction room to view or bid. We do not accept bids from any person who has not completed and delivered to us one of our Bidding Forms. You will be asked for photographic proof of identity, residence and references. Bids will not be accepted if you fail to provide sufficient identification when asked to produce it. We may also ask for a deposit to be paid prior to bidding. We may refuse entry to a Sale to any person even if that person has completed a Bidding Form.

b) The maker of the highest bid accepted by the Auctioneer conducting the sale shall be the buyer at the hammer price and any dispute regarding a bid shall be made and settled at the Auctioneer's absolute discretion, and may reoffer the Lot during the course of the auction or otherwise. The Auctioneer shall act reasonably in exercising this discretion. The Auctioneer's decision is final.

c) Bidders shall be deemed to act as principals.

d) Once made no bid can be withdrawn.

e) Our right to bid on behalf of the seller is expressly reserved up to the amount of any reserve and the right to refuse any bid is also reserved.

2. INCREMENTS

a) Bidding increments shall be at the Auctioneer's sole discretion.

3. THE PURCHASE PRICE

a) The buyer shall pay the Hammer Price together with a premium thereon of 15% plus VAT on the premium at the rate imposed by law on all lots. Lots purchased online will incur an additional charge in the sum of 3% of the Hammer Price plus VAT at the rate imposed by law.

4. VALUE ADDED TAX

a) Where a lot is marked with an asterisk (*), VAT will be payable at the standard rate as imposed by law on the Hammer Price as well as being added to the buyer's premium.

b) Where a lot is marked with a double asterisk (**), VAT will be charged at a reduced VAT rate (currently 5%) to the gross price of that lot being the Hammer Price plus the buyer's premium.

c) Where no asterisk is marked against a lot, no VAT is payable on the Hammer Price, and is deemed to have been sold under the Auctioneer's Margin Scheme. VAT included within the premium is not recoverable as input tax.

5. PAYMENT

a) Your obligation to pay for a lot occurs when the Auctioneer's hammer has fallen in respect of the lot.

b) Immediately a lot is sold you will give to us, if requested, proof of identity and pay to us the total amount due in cash or in such other way as agreed by us. Any payments by you to us may be applied by us towards any sums owing from you to us on any account whatever without regard to any directions of you or your agent, whether express or implied.

c) No cash payments will be accepted over £6000.00 (Six Thousand Pounds Sterling).

d) Payment is acceptable in cash, credit or debit card. A handling charge of 2% will be added to all purchases made by credit card. Payments made by debit card will incur no extra charge. Payment can be made by direct bank transfer into our bank account.

e) Payment of the purchase price and all other sums payable by you to Whittons must be made in the currency in which the sale was conducted within seven working days following the sale. Payment must be received in cleared funds by the seventh working day following the sale. Failure to provide cleared funds within this time may result in remedies being exercised as stated in condition 7.

6. TITLE AND COLLECTION OF PURCHASES

a) Ownership of the lots purchased shall not pass to the buyer until payment has been made in full to us of the total amount due, to include all premiums, charges and postal costs where applicable, and received in cleared funds by Whittons.

b) Responsibility of the lot passes to the buyer at the fall of the Auctioneer's hammer. The seller will no longer be responsible for the lot thereafter. The buyer will indemnify the seller and keep the seller fully indemnified from and against all claims, proceedings, costs, expenses and losses arising in respect of any injury, loss and damage caused to the lot after the fall of the Auctioneer's hammer until the buyer obtains full title to it.

c) You shall, at your own risk and expense take away any lots that you have purchased and paid for in full, not later than seven working days following the sale or upon the clearance of any cheque used for payment after which you shall be responsible for any removal, storage and insurance charges. No purchase can be claimed or removed until it has been paid for in full.

d) Title to the lot remains in and is retained by the seller until payment has been made in full to us of the total amount due, to include all premiums, charges and postal costs where applicable, and received in cleared funds by Whittons.

e) All items are held at the risk of the buyer. If they are not removed within fourteen working days of the sale the auctioneers will instruct a local carrier to remove them for storage. The buyer will be responsible for paying all charges incurred and for making arrangements in advance for the removal of items from their store after payment of their charges and on production of our receipt for the items.

7. REMEDIES IN THE EVENT OF NON-PAYMENT OR PURCHASES NOT BEING COLLECTED ON TIME

If any lot is not paid for in full and taken away in accordance with these conditions or if there is any other breach of these conditions, we, as agent for the seller and on our own behalf, shall at our absolute discretion and without prejudice to any other rights we may have be entitled to

exercise one or more of the following rights and remedies: To proceed against you for damages for breach of contract;

a) To rescind the sale of that lot and/or any other lots sold by us to you;

b) To resell the lots (by auction or private treaty) in which case you shall be responsible for any resulting deficiency in the total amount due (after crediting any part payment and adding any resale costs). Any surplus so arising shall belong to the seller;

c) To remove, store and insure the lot at your expense and, in the case of storage, either at our premises or elsewhere;

d) To charge interest at a rate not exceeding 1.5% per month on the total amount due to the extent it remains unpaid for more than seven working days after the sale;

e) To retain that or any other lot sold to you until you pay the total amount due

f) To reject or ignore bids from you or your agent at future auctions or to impose conditions before and such bids shall be accepted.

g) To apply any proceeds of sale of other lots due in future becoming due to you towards the settlement of the total amount due and to exercise a right to possession (lien) of any of your property in our possession for any purpose until the debt due is satisfied.

h) We shall, as agent for the seller and on our own behalf pursue these rights and remedies only so far as is reasonable to make appropriate recovery in respect of breach of these conditions.

8. THIRD PARTY LIABILITY

All members of the public enter our premises at their own risk. They must make themselves aware of all security and fire arrangements in the building and to note the layout of the accommodation. Accordingly neither the Auctioneer nor our employees or agents shall incur any liability for death or personal injury (except as required by law by reason of our negligence) or similarly for the safety of persons visiting prior to or at a sale.

9. RIGHT TO REFUSE ENTRY

Whittons shall have the right at our discretion, to refuse admission to our premises or attendance at our auctions by any person.

10. COMMISSION BIDS

We will, if so instructed, execute bids on a buyer's behalf. The bid must be received by us no later than one hour prior to the commencement of the sale for which the lot is being sold. The bid must be clearly written or typed, and must have the full name, address and telephone number of the person bidding, and signed by the person making the bid. Neither the Auctioneer nor our employees shall be held responsible for any failure to do so save where such failure is unreasonable. Where two or more commission bids are received at the same price, the Auctioneer reserves the right and absolute discretion to choose which bid shall prevail. It will be assumed that the prospective buyer has carefully inspected the lot and has satisfied themselves as to its condition prior to leaving the commission bid. No bids can be retracted once the item has been sold.

WHITTONS AUCTIONS

11. WARRANTY OF TITLE AND AVAILABILITY

The seller warrants to the auctioneers and the buyer that the seller is the true owner of the property consigned or is properly authorised by the true owner to consign it for sale and is able to transfer good title to the property free from any third party claims.

12. AGENCY

The auctioneers normally act as agent only and disclaim any responsibility for default by sellers or buyers.

13. TERMS OF SALE

The seller acknowledges that Lots are sold subject to the stipulations of these conditions in their entirety and on the terms of consignment as notified to the consignor at the time of the entry of the lot.

14. DESCRIPTIONS

Whittons will not be held responsible for misrepresentation, and any wording or description either spoken written discussed published or otherwise shall not form the basis of any contract. Items are described as opinion only, and whilst due diligence is taken to make accurate descriptions, it may be impracticable to ensure accuracy in its entirety. All items are therefore sold as seen and prospective buyers must inspect view and take their own independent expert advice should they so wish before bidding on any item in any sale and must satisfy themselves as to the accuracy of any description applied to a lot. Prospective buyers bid on the understanding that representations or statements as to authorship genuineness origin date age provenance condition size shape weight colour etcetera are opinions only. Subject to the foregoing neither we the auctioneer nor our employees or agents nor the seller accept liability for the correctness of such opinions and all conditions and warranties, whether relating to description, condition or quality of lots, express, implied or statutory, are hereby excluded. Private treaty sales made under these conditions are deemed to be sales by the auction for purposes of consumer legislation.

Notwithstanding this condition any Lot which proves to be a deliberate forgery as defined may be returned to us by you within 14 days of the auction provided it is in the same condition as when bought, and is accompanied by particulars identifying it from the relevant catalogue description and a written statement of defects. If we are satisfied from the evidence presented that the Lot is a deliberate forgery we shall refund the money paid by you for the Lot including any buyer's premium provided that

- a) if the catalogue reflected the accepted view of scholars and experts as at the date of sale or
- b) you personally are not able to transfer a good and marketable title to us, you shall have no rights under this condition.

The right of return provided by this Condition is additional to any right or remedy provided by law or by these Conditions of Sale.

15. ONLINE BIDDING

Whittons may offer an online bidding service via www.the-saleroom.com for bidders who cannot attend the sale. In completing the bidder registration on www.the-saleroom.com and providing your credit card details and unless alternative arrangements are agreed with Whittons you:

a) authorise Whittons if they so wish to charge the credit card given in part or full payment including all fees for items successfully purchased in the auction via www.the-saleroom.com and

b) confirm that you are authorised to provide these credit card details to Whittons through www.the-saleroom.com and agree that Whittons are entitled to dispatch the goods to the card holder name and card holder address provided in fulfilment of the sale.

Please note that any lots purchased via the-saleroom.com live auction service will be subject to an additional 3% commission charge + VAT at the standard rate imposed on the hammer price. Buyers registering to bid through www.the-saleroom.com must submit credit/debit card details to register. Whittons will take a deposit of maximum £500.00 sterling from the registered credit / debit card at the discretion of the auctioneer. If the buyer is unsuccessful this deposit will be refunded. If successful the deposit will be deducted from the final invoice. The deposit will be subject to variables in exchange rates and bank charges that the buyers' bank might levy. The buyer will be liable for such charges.

15. CHEQUES

Cheques will only be accepted for payment at the auctioneer's discretion. No purchases will be removed from the saleroom unless cleared funds have been received by us. Any prospective purchasers who wish to pay by cheque must inform the auctioneers at least 7 working days before the sale. It will be at the auctioneer's discretion whether to take a cheque in lieu of prospective purchases prior to the sale and allowing for clearance of the cheque. If you are later unsuccessful in your purchase, the amount of your cheque will be refunded. Payment in cheque will not be acceptable on the day of the sale if prior arrangement has not been made with the auctioneer but if you wish to pay using this method then your purchases will be withheld until full clearance of the cheque has been granted. Only authorised payments by card or cash will be allowed to allow removal of goods on sale day.

16. TELEPHONE PAYMENTS

Payments will not be accepted if made at the telephone for invoices of more than £300.00 unless the buyer is known to the auctioneer. Card payments can be made in person or by bank transfer cash up to £6000.00 (Six Thousand Pounds Sterling).

17. SELLER'S COMMISSION AND CHARGES

Commission is charged at 15% plus VAT at the standard rate on the hammer price. Items which sell for less than £20.00 will incur a commission charge of £5.00 plus VAT at the standard rate. No charge will be made for items which fail to sell. Withdrawn lots may incur an administration charge if withdrawn once the item has been published for sale. No charges are made for catalogue illustration photography or advertising unless special illustration photography or advertising is deemed necessary and not without the consent of the vendor. A charge of £3.00 per item will be charged per item for each item that requires electrical testing.

18. RESERVES

Items will only be accepted with reserve which, in the auctioneer's opinion, are likely to realise at least £20.00 or more. Any item worth less than this value will be deemed to be entered for sale without reserve. Any items which are taken

with a reserve price will be accepted on the basis that the auctioneer will have discretion to sell that item for 10% less than the reserve if a buyer at that price exists on the day. Whittons can refuse to accept any item for sale where, in the auctioneer's opinion, the reserve price suggested by the seller is too high and/or the item would not sell.

19. SELLER'S CONDITIONS

a) All sellers must sign the declaration confirming conditions of sale on the receipt which is given to you when you submit goods to us for sale. All items handed over to us are assumed to be given to us for the purpose of entering those lots for sale by auction.

b) All sellers must sign to confirm that they are the true owners of the goods entered for sale and that they have legitimate title to those goods free of any encumbrance and free from any third party or that they have authority to dispose of the goods on behalf of the true owner and are able to transfer good and marketable title to the property free from any third party claims.

c) All goods entered for sale must comply with all safety regulations under the Consumer Protection Act and the Furnishing Fire / Safety Regulations 1988.

d) The seller authorises Whittons to deduct commission at the rates quoted and by the signing the form, the seller is deemed to have accepted the terms and conditions of sale.

e) The seller has a duty to disclose all defects restorations or alterations to the goods at the time they are entered for sale and is duty bound to bring such defects restorations or alterations to auctioneer's attention in writing. Failure to do so notwithstanding any description of the goods given by the auctioneers can result in the sale being rescinded and the seller being responsible for all allied costs incurred by the auctioneer and the buyer.

f) The seller warrants in respect of any item of mechanical or electrical equipment that it is:

a. in working order

b. reasonably fit for the purpose for which it is designed or adapted

c. that it can be used safely and without risk of causing injury or damage and

d. will indemnify Whittons against any loss or damage suffered in consequence of any breach of the above warranty and undertaking.

g) The Vendor gives Whittons full and absolute right to photograph and illustrate any lot placed with them for sale and to use such photographs and illustrations at any time at their absolute discretion whether or not in connection with the auction.

h) Sellers selling any assets of their business must disclose whether they are registered for value added tax (VAT) at the time the goods are presented for sale and disclose the VAT registration number and indicate clearly whether the goods are to be sold under the margin scheme and where this is the case, VAT will not be recoverable by the seller.

English law applies to the interpretation of these Conditions.





THE FINE ART AUCTION ROOMS

DOWELL STREET · HONITON · DEVON EX14 1LX

01404 517000 · 01392 345454

INFO@WHITTONSAUCTIONS.CO.UK

WWW.WHITTONSAUCTIONS.CO.UK