



WHITTONS  
AUCTIONEERS & VALUERS



TWO DAY SUMMER AUCTION

10<sup>th</sup> - 11<sup>th</sup> August 2017





## TWO DAY SUMMER AUCTION

THURSDAY 10<sup>TH</sup> AND FRIDAY 11<sup>TH</sup> AUGUST 2017

Commencing at 10.00am on each day

Live Internet bidding via

[the-saleroom.com](http://the-saleroom.com)

EACH LOT IS ILLUSTRATED ONLINE

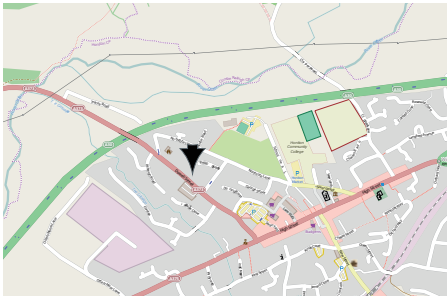
VIEWING TIMES:

Sunday 6<sup>th</sup> August 10.00am – 1.00pm

Monday, 7<sup>th</sup> August 9.30am – 4.30pm

Tuesday 8<sup>th</sup> August 9.30am – 4.30pm

Wednesday 9<sup>th</sup> August 9.30am – 4.30pm



THE FINE ART AUCTION ROOMS  
DOWELL STREET  
HONITON  
DEVON  
EX14 1LX  
01404 517000 · 01392 345454  
[info@whittonsauctions.co.uk](mailto:info@whittonsauctions.co.uk)  
[www.whittonsauctions.co.uk](http://www.whittonsauctions.co.uk)

ALL COMMISSION AND TELEPHONE BIDS MUST  
BE REGISTERED WITH THE AUCTIONEERS  
BY 4.30PM THE DAY BEFORE THE SALE AND  
NO GUARANTEES WILL BE GIVEN FOR LATE  
RECEIPT.

YOU MUST REGISTER TO BID. PHOTOGRAPHIC  
IDENTIFICATION REQUIRED.

A 10% DEPOSIT OF THE LOWER ESTIMATE  
OF THE LOT(S) ON WHICH YOU WISH TO  
BID IS REQUIRED FOR ALL TELEPHONE BIDS.  
BIDDING FORMS AVAILABLE ON OUR WEBSITE.

PHOTOGRAPHIC IDENTIFICATION REQUIRED  
FROM ANYONE WISHING TO VIEW THE  
JEWELLERY.

BUYERS PREMIUM 18% + VAT

## Order of sale

---

### Thursday 10th August at 10.00 am

Silver 1 – 229

*There will now be a 10 minute break.*

Jewellery, Watches and Coins 230 – 519

### Friday 11th August at 10.00am

Pictures 520 – 569

Collectables and China 570 – 891

*There will now be a 10 minute break.*

Furniture 900 – END



### Cover Illustrations

Front: Lot 208

Inside Front: Lot 804

Inside Back: Lot 455

Back: Lot 786

**THURSDAY 10<sup>TH</sup> AUGUST AT 10.00AM.****SILVER**

---



Lot 208

- 1.** A set of six teaspoons and matching tongs. London. By DF. Approx. 82 grams. *Est. £20 - £30.*
- 2.** A large circular pierced dish. Birmingham. By BB&S. Approx. 172 grams. *Est. £60 - £80.*
- 3.** A pair of Indian salad servers with floral decoration. Approx. 123 grams. *Est. £40 - £60.*
- 4.** A heavy Indian slice together with chop servers and a pipe. Approx. 316 grams. *Est. £60 - £80.*
- 5.** A good quality large square dome top biscuit barrel of half fluted design on ball feet. London. By CC. Approx. 659 grams. *Est. £250 - £300.*
- 6.** A good quality cream jug on spreading base. Sheffield. By JR. Approx. 159 grams. *Est. £60 - £80.*
- 7.** Two large Adams' style mustard pots complete with BGLs and spoons with reeded handle. *Est. £80 - £100.*
- 8.** A matched pair of good quality Georgian salts of half fluted design with gadroon rim and gilt interiors. London. Approx. 266 grams. *Est. £100 - £150.*
- 9.** A good Georgian wine funnel, the bowl with fluted decoration and pierced matching liner. London 1794. By JS. Approx. 177 grams. *Est. £250 - £300.*
- 10.** An unusual toothpick holder on pedestal base. Birmingham. By B&M. *Est. £30 - £50.*
- 11.** A good set of six coffee spoons, the handles decorated with a duck's head. London. By A. Bros. Approx. 67 grams. *Est. £150 - £200.*

- 12.** An unusual cased crystal ball watch mounted on suspension chain with white enamelled dial in fitted box. *Est. £200 - £250.*
- 13.** A pair of Exeter fiddle pattern sauce ladles. Approx. 119 grams. *Est. £60 - £80.*
- 14.** A good quality five bar toast rack on ball feet with ring thumb piece. London. By RWV. Approx. 128 grams. *Est. £40 - 360.*
- 15.** A large engine turned cigarette case with hinged top, vacant cartouche and fitted interior. Birmingham. By JG&L. *Est. £150 - £200.*
- 16.** An embossed picture frame, the border attractively decorated with animals and scrolls and vacant cartouche. Leatherette back. *£150 - £200.*
- 17.** A large circular embossed top ring box with fitted interior. Birmingham. By BS&Co. Approx. 127 grams. *Est. £60 - £80.*
- 18.** A pair of large casters of Adams' design with lift off covers, and contained within a fitted box. Approx. 16 cms high. Chester. By H&M. *Est. £150 - £200.*
- 19.** An Arts & Crafts cup, the stylish body decorated with balls and crimped rim. Approx. 10 cms high. Approx. 123 grams. *Est. £100 - £150.*
- 20.** J GILLMORE - GLASTONBURY: A good pair of stylish bowls with ball decoration and crimped rim. Inscribed to base: "The Glastonbury Bowl, Reg 509832". Approx. 406 grams. *Est. £300 - £400.*
- 21.** A hobnail cut scent bottle with hinged top, decorated with flowers and leaves. Birmingham. By SB&SL. *Est. £40 - £60.*
- 22.** A pair of Georgian peppers on pedestal base with engraved decoration. Sheffield. Approx. 73 grams. *Est. £20 - £30.*
- 23.** A pair of mustards with hinged top and Oriental design. No liners. Approx. 212 grams. *Est. £50 - £80.*
- 24.** Two embossed salts together with a pierced example on ball feet. Various dates and makers. *Est. £20 - £30.*
- 25.** A pair of silver rimmed cut glass salts together with a cut glass scent bottle, an embossed button hook etc. Various dates and makers. *Est. £20 - £30.*
- 26.** A small tapering spill vase with reeded border. Birmingham. By JR. Together with a small pair of engraved fish eaters. London. By GJ&DF. Approx. 32 grams. *Est. £20 - £30.*
- 27.** A good quality circular four piece tea and coffee service with reeded border. Birmingham. By D&F. Approx. 1107 grams. *Est. £350 - £400.*
- 28.** A tall pair of silver mounted decanters with glass stoppers. Slight damage. London. By SF&DF. *Est. £20 - £30.*
- 29.** A large cigarette box with hinged top and fitted interior. London. By S&G Ltd. Approx. 640 grams. *Est. £50 - £80.*
- 30.** A picture frame attractively decorated with love birds and floral decoration with oak back. Approx. 22 cms high. Birmingham. By B&C. *Est. £120 - £150.*
- 31.** A good quality OE pattern three piece boxed christening set. London. By D&JW. *Est. £60 - £80.*
- 32.** A large modern silver picture frame of wavy design and wooden panelled back. Approx. 22 cms high. *Est. £40 - £60.*
- 33.** An attractively enamelled mirror engraved with flower decoration. Birmingham. By HC&D. *Est. £80 - £100.*



- 34.** A modern picture frame, the border decorated as columns on panelled back. Approx. 20 cms high. *Est. £40 - £60.*
- 35.** A heavy set of four napkin rings with beaded border. Birmingham. By TWV. Approx. 84 grams. *Est. £70 - £80.*
- 36.** A heavy pair of Exeter fiddle pattern sugar tongs, together with two other pairs of tongs. Various dates and makers. Approx. 150 grams. *Est. £50 - £60.*
- 37.** An unusual set of eight stylish Coronation teaspoons. Sheffield. By CB&S. Approx. 164 grams. *Est. £60 - £80.*
- 38.** A small Georgian waiter with gadroon rim and three hoof feet. London 1763. By EC. Approx. 245 grams. *Est. £150 - £200.*
- 39.** A two handled sugar bowl with gilt interior on spreading base. Sheffield. By JR. Approx. 283 grams. *Est. £100 - £150.*
- 40.** A small half fluted mustard pot with reeded handle. Birmingham. By JJ&Co. Together with a spoon. (Different date and maker). Approx. 34 grams. *Est. £30 - £50.*
- 41.** A set of eight coffee spoons with reeded decoration. Sheffield. By Walker & Hall. Approx. 94 grams. *Est. £30 - £40.*
- 42.** A set of ten bone handled dessert forks with engraved decoration. Birmingham. By HA. *Est. £20 - £30.*
- 43.** A selection of five Continental silver bangles. A variety of decorations. Approx. 291 grams. *Est. £60 - £80.*
- 44.** A silver heart shaped bonbon dish together with a Continental napkin ring and two hobnail cut jars. Various dates and makers. *Est. £20 - £30.*
- 45.** A Continental three piece buckle attractively decorated with flowers and leaves. Approx. 83 grams. *Est. £30 - £50.*
- 46.** A Continental tobacco pouch together with a small Eastern dish. Approx. 189 grams. *Est. £50 - £80.*
- 47.** A large hobnail cut scent bottle with embossed lid and stopper. London. By JNM. *Est. £50 - £80.*
- 48.** A silver hobnail cut scent bottle together with a preserve jar and lift-off cover. *Est. £320 - £30.*
- 49.** A small stylish three piece cruet set with lift off-cover and stepped base. Birmingham. By S&M. Approx. 148 grams. *Est. £25 - £35.*
- 50.** A large rectangular picture frame, the body embossed with flowers and leaves, with leatherette back. Approx. 26 cms high. *Est. £120 - £160.*
- 51.** A tall pair of candlesticks with panelled sides and removal ball sconces. Sheffield. By WL&S. Approx. 25 cms high. *Est. £250 - £350.*
- 52.** A plain slim cigarette box with engine turned decoration and fitted interior. Birmingham. By C&C. *Est. £50 - £80*
- 53.** An Antique silver rimmed horn tumbler with crested front and tapering sides. Approx. 14 cms high. *Est. £40 - £60.*
- 54.** A good set of four bonbon dishes with crimped rims. Birmingham 1891. By D&F. Approx. 272 grams. *Est. £150 - £200.*
- 55.** An unusual Continental sugar bowl of textured design. Approx. 163 grams. Approx. 8 cms high. *Est. £100 - £150.*

- 56.** A good pair of shell salts with fluted bowls. Sheffield. By H&A. Approx. 121 grams. *Est. £40 - £60.*
- 57.** A Georgian style cream jug with card cut rim and scroll decorated handle. Approx. 90 grams. Chester modern. *Est. £30 - £40.*
- 58.** A large pair of salad servers with tapering handles and bead decoration. London. By S&W Ltd. Approx. 212 grams. *Est. £60 - £80.*
- 59.** A good quality Victorian mustard pot with pierced rim and embossed feet. London. *Est. £50 - £80.*
- 60.** A silver bread fork with pistol handle. London. By EV. Together with a plated example. *Est. £20 - £30.*
- 61.** A bundle of silver teaspoons, butter knives etc. Various dates and makers. Approx. 115 grams. *Est. £25 - £30.*
- 62.** A pair of fiddle pattern tablespoons. London. By GA. Approx. 157 grams. *Est. £40 - £60.*
- 63.** A large Continental silver gilt serving spoon, the bowl attractively decorated with flowers and leaves. Approx. 106 grams. *Est. £30 - £50.*
- 64.** An Japanese curved cigarette box, the body decorated with a village scene. Signed to base. The interior also decorated with a village scene. Approx. 89 grams. *Est. £30 - £50.*
- 65.** A good pair of Scottish toddy ladles of fiddle design. Edinburgh 1805. Approx. 68 grams. *Est. £50 - £80.*
- 66.** A stylish preserve spoon, the tapering stem to circular bowl. Sheffield. By TB&S. Approx. 47 grams. *Est. £20 - £30.*
- 67.** A good quality two handled sugar bowl, the body decorated with flowers and leaves. Sheffield. By HS Ltd. Approx. 129 grams. *Est. £60 - £80.*
- 68.** An Adams' style sauce boat, the body mounted with card cut rim on three hoof feet. Sheffield. By RM&EH. Approx. 127 grams. *Est. £50 - £80.*
- 69.** An early Victorian gilt posy holder, the MOP body tapering to embossed stem with rose petal and cherub decoration. *Est. £200 - £250.*
- 70.** A small egg shaped scent bottle with screw-on cover mounted with suspension chain. Birmingham. By H&M. Approx. 5 cms long. Approx. 20 grams. *Est. £70 - £80.*
- 71.** A 15 carat Victorian scent bottle with tapering body, hinged lid and glass stopper. Approx. 7.5 cms long. *Est. £150 - £200.*
- 72.** A long tapered scent bottle with plated hinged top to cut glass body. *Est. £30 - £40.*
- 73.** An engine turned nail buffer with plain handle and fitted holder. Approx. 110 grams. *Est. £50 - £80.*
- 74.** A silver and enamelled scent bottle with lift-off cover. Slight damage. Birmingham. By RC. *Est. £20 - £30.*
- 75.** A pair of attractively enamelled scissors with gilt blades. *Est. £80 - £100.*
- 76.** A pair of engine turned piano candlesticks. Birmingham 1929. By WD&TB. *Est. £150 - £200.*
- 77.** A stylish picture frame with embossed margin and shell finial. Birmingham. By H&M. Approx. 20 cms high. *Est. £100 - £150.*
- 78.** A salt and pepper in the form of cubes with screw-in base. 800 standard. Approx. 82 grams. *Est. £40 - £60.*



- 79.** A pair of tall slim tapering candlesticks. Birmingham. By S&Co. Approx. 21 cms high. Est. £140 - £160.
- 80.** An unusual set of four toast racks on bracket feet. Birmingham 1913. By A Bros. Approx. 195 grams. Est. £150 - £200.
- 81.** Two heavy engine turned hand mirrors. Est. £80 - £100.
- 82.** A small two handled porringer with fluted sides and gilt interior. Birmingham. Approx. 74 grams. Est. £30 - £50.
- 83.** A good embossed dressing table box with hinged lid and crimped rim. Birmingham. By B&Co. Approx. 143 grams. Est. £60 - £80.
- 84.** An embossed Indian bonbon dish decorated with palm tress and wavy edge. Approx. 89 grams. Est. £20 - £30.
- 85.** A silver and glass mounted biscuit box with swing handle and loop top. Birmingham 1936. Est. £60 - £80.
- 86.** A silver half fluted cream jug with gilt interior and reeded body. London. By CB. Approx. 232 grams. Est. £60 - £80.
- 87.** A heavy sauce boat with plain handle. Birmingham. By BB&S Ltd. Approx. 209 grams. Est. £60 - £80.
- 88.** A silver and tortoiseshell mounted travelling watch in leather case. Birmingham. Est. £30 - £40.
- 89.** A good quality Georgian snuff box, the body attractively engraved with spirals and gilded interior. Sheffield. By IB. Approx. 96 grams. Est. £250 - £300.
- 90.** A pair of heavy weighted peppers. London 1879. Approx. 100 grams. Est. £50 - £60.
- 91.** A silver mounted and cut glass sugar bowl with ball decoration. Birmingham 1902. By WH. Est. £40 - £60.
- 92.** TIFFANY: A stylish sauce ladle, the handle decorated with scrolls and flowers. Approx. 63 grams. Est. £60 - £80.
- 93.** A ruby glass double ended scent bottle with gilded decoration and hinge top, together with one other. Est. £60 - £80.
- 94.** A Tiffany style picture frame of silver on copper in the form of flowers. Marked Sterling. Est. £120 - £150.
- 95.** An attractively enamelled box with hinge top and gilded interior decorated with a flower. Approx. 67 grams. Est. £300 - £400.
- 96.** A circular embossed sweet dish attractively decorated with flowers and leaves on scroll feet. Approx. 41 grams. Est. £30 - £40.
- 97.** A set of six Continental teaspoons and matching tongs. Approx. 70 grams. Est. £20 - £30.
- 98.** HENRY ELLIS: An attractive engraved bow brooch with buckle decoration, marked to back, "Combe Martin Silver". Est. £100 - £150.
- 99.** A good square picture frame attractively decorated with flowers and leaves. Chester. By JD&WD. Est. £70 - £80.
- 100.** An unusual modern gem set and silver mounted elephant contained within a fitted box. Est. £60 - £80.
- 101.** A small embossed cream jug decorated with flowers and leaves. Chester. By GN&RH. Est. £15 - £20.

**102.** A heavy pair of embossed berry spoons, the bowls decorated with figures. London. By PB&WB. Approx. 103 grams. Est. £30 - £50.

**103.** A set of six teaspoons together with matching sifter spoon. Birmingham. By M Bros. Approx. 64 grams. Est. £30 - £50.

**104.** An unusual slice of OE design. Chester. By KEB&FEB. Approx. 140 grams. Est. £40 - £60.

**105.** A Chinese silver cigarette box with textured body, the hinged top revealing a fitted interior. Approx. 609 grams. Est. £200 - £250.

**106.** An oval picture frame, the top embossed with scrolls and leaves. Approx. 26 cms high. Est. £50 - £60.

**107.** A large ivory mounted paper knife / magnifier with engraved decoration. Birmingham 1906. Approx. 30 cms long. Est. £100 - £150.

**108.** A good heavy Georgian cake basket, the body attractively designed with leaf work and the swing hand with gadroon rim mounted on four ball feet. Sheffield 1817. By J T Settle. Approx. 839 grams. Est. £600 - £800.

**109.** A stylish unusual Arts & Crafts three piece cruet. Sheffield. By R&S. Approx. 286 grams. Est. £220 - £250.

**110.** A good envelope card case with hinged top. Sheffield 1897. By WN. Approx. 6.5 cms x 10 cms. Approx. 84 grams. Est. £100 - £150.

**111.** A heavy matched set of six table forks of fiddle, thread and shell design. London 1835. Approx. 612 grams. Est. £150 - £200.

**112.** A Russian oval box, the top engraved with church scene. Approx. 23 grams. Est. £20 - £30.

**113.** An Italian three legged vase with lion mask decoration, stamped to base. Approx. 168 grams. Approx. 11 cms high. Est. £50 - £80.

**114.** A pair of silver piano candlesticks with reeded mounts together with a silver desk calendar. (Slight damage). Est. £20 - £30.

**115.** A heavy Continental vesta case with engraved decoration, together with one other marked Sterling. Approx. 62 grams. Est. £25 - £35.

**116.** A small engraved sovereign and half sovereign case with hinged tops, together with a vesta case. Approx. 40 grams. Est. £20 - £30.

**117.** A bag containing various plated and other vesta cases of various shapes and designs. Approx. 145 grams. Est. £25 - £35.

**118.** A small collection of extending pencils, watch keys, brooches etc. Approx. 53 grams. Est. £20 - £30.

**119.** A pair of heavy fiddle pattern dessert spoons together with two Irish fiddle pattern table forks. Various dates and makers. Approx. 263 grams. Est. £30 - £40.

**120.** A heavy set of five fiddle pattern tablespoons with crested terminals. London. By WE&WF. Approx. 357 grams. Est. £100 - £150.

**121.** A good set of OE pattern dessert spoons. London. By WE. Approx. 199 grams. Est. £40 - £60.

**122.** A large heavy baluster shaped tankard, the body heavily embossed with flowers and leaves. London 1826. By HC. Approx. 642 grams. Est. £400 - £500.

- 123.** A pair of good quality salad servers attractively decorated with leaves and acorns with textured handle contained within a fitted box. Sheffield 1954. By AU&R. Est. £200 - £250.
- 124.** A small five bar toast rack on ball feet. London 1912. By C&C. Approx. 106 grams. Est. £30 - £40.
- 125.** An attractive Continental christening cup, the handle decorated with a stork and child. Approx. 30 grams. Est. £20 - £30.
- 126.** A large rectangular dome top cigarette case, the hinged top with fitted interior. London 1925. By B&D. Est. £100 - £150.
- 127.** A heavy large circular powder jar, the silver top attractively decorated with flowers and leaves. Chester. By JD&WD. Est. £20 - £30.
- 128.** A stylish silver topped jar in the form of a lady with sweeping dress. Marked Sterling. Est. £30 - £40.
- 129.** A good quality large embossed picture frame, the body heavily decorated with leaves and scrolls. Approx. 29 cms high. Est. £80 - £100.
- 130.** MASONIC: A large silver pendant in the form of a square with hinge top. London. By H&H. Approx. 42 grams. Est. £30 - £40.
- 131.** A good pair of embossed and pierced sweet dishes on scroll feet, attractively decorated with flowers and leaves. London. By WC. Approx. 323 grams. Est. £150 - £200.
- 132.** A bag containing an embossed top jar, preserve spoon, bonbon dish etc. Various dates and makers. Est. £20 - £30.
- 133.** A Georgian wine funnel with beaded border and pierced top. London 1778. By JE. Est. £70 - £90.
- 134.** EXETER: A large fiddle pattern basting spoon. 1825. By WW. Approx. 112.5 grams. Est. £100 - £150.
- 135.** A heavy pair of Georgian salts with gadroon rim, hoof feet, and BGLs. London 1768. By RH&DH. Approx. 274 grams. Est. £120 - £160.
- 136.** A Victorian double ended marrow scoop with reeded stem. London. By GA. Approx. 63 grams. Est. £80 - £100.
- 137.** A pair of Eastern silver vases with lift-off covers engraved with flowers. Approx. 240 grams. Est. £30 - £50.
- 138.** A boxed set of six teaspoons. Sheffield. By CB&S. Approx. 92 grams. Est. £20 - £30.
- 139.** A heavy pair of napkin rings together with a pair of Georgian sugar tongs and a sifter spoon. Various dates and makers. Est. £30 - £40.
- 140.** A heavy set of six fiddle and thread dessert spoons. Sheffield. By H&W. Approx. 404 grams. Est. £100 - £150.
- 141.** A heavy pair of Georgian style sauce boats on scroll feet, the handles with ball decoration. London. By EB. Approx. 501 grams. Est. £150 - £200.
- 142.** A good etched glass lemonade jug with hinge top to pouring lip. Birmingham. By HWL. Est. £150 - £200.
- 143.** A boxed set of six pistol handled tea knives. Birmingham. By JE. Est. £10 - £20.
- 144.** A cased set of eleven teaspoons with engraved decoration. London. By DF. Est. £30 - £50.
- 145.** A good Georgian oval mustard pot with hinged lid. (No liner). London. By MP. Est. £50 - £60.

**146.** A silver plaque together with a napkin clip, amber cigarette holder and a silver spoon. Various dates and makers. *Est. £20 - £30.*

**147.** A heavy silver embossed vesta case together with an engraved example and also a plain example. Various dates and makers. Approx. 109 grams. *Est. £40 - £60.*

**148.** An unusual vesta case / extending pencil with hinged side. Birmingham. By HJ&Co. Together with an engraved example. Approx. 37 grams. *Est. £30 - £50.*

**149.** A good quality plain vesta with shaped top. Birmingham 1912. By HW Ltd. Approx. 36 grams. *Est. £30 - £50.*

**150.** A bag containing silver brooch, thimble, compact etc. Approx. 61 grams. *Est. £30 - £40.*

**151.** A large circular embossed top dressing table jar decorated with flowers and scrolls. Birmingham. By H&H. *Est. £20 - £30.*

**152.** A large embossed mirror heavily decorated with flowers and leaves. Birmingham 1899. Approx. 35 cms high. *Est. £80 - £120.*

**153.** A good boxed set of six plated engraved napkin rings, individually numbered. *Est. £40 - £50.*

**154.** A large embossed picture frame heavily decorated with flowers and leaves with vacant cartouche on leatherette back. Approx. 30 cms high. *Est. £100 - £150.*

**155.** A finely engraved dressing table mirror mounted with swags and leaves with ball decoration. Birmingham 1913. *Est. £50 - £80.*

**156.** A large conjoined oil and vinegar bottle with silver stoppers. Birmingham. By H&H. *Est. £50 - £80.*

**157.** A good set of Continental silver mounted coasters with gadroon decoration together with a larger example. *Est. £40 - £60.*

**158.** A heavy pint tankard with ball decoration and tapering body. London. By AH&N. Approx. 425 grams. *Est. £200 - £250.*

**159.** An unusual pair of chop servers, the body decorated with scrolls and flowers and inset with George III coins. London 1902. By HB. Approx. 80 grams. *Est. £30 - £40.*

**160.** A small engine turned pencil. Marked Sterling. *Est. £10 - £20.*

**161.** An Indian three piece tea service on pedestal base, the body decorated with figures and foliage to elephant handle. Approx. 816 grams. *Est. £250 - £300.*

**162.** A good Victorian embossed boat shaped sugar bowl heavily decorated with flowers and leaves. London 1802. By JA&S. Approx. 118 grams. *Est. £60 - £80.*

**163.** A Georgian style cream jug and sugar bowl with bright cut decoration. London 1906. By Elkington & Co. Approx. 373 grams. *Est. £130 - £150.*

**164.** A set of five rat tail teaspoons together with a Georgian wine lable; "Gin", and a silver ingot. Approx. 106 grams. *Est. £40 - £50.*

**165.** Dunhill: A boxed plated lighter with flip top together with paperwork. *Est. £10 - £20.*

**166.** An embossed dressing table mirror decorated with birds and flowers. Birmingham. Be GJ. *Est. £20 - £30.*

**167.** A heavy matched set of six fiddle, thread and shell dessert forks. London. By MC/GA. Approx. 387 grams. *Est. £100 - £150.*

**168.** A heavy set of six dessert spoons. London 1835. By MC. Approx. 380 grams. Est. £100 - £150.

**169.** A heavy set of five fiddle, thread and shell teaspoons. London 1842. By MC. Approx. 158 grams. Est. £40 - £60.

**170.** A small two piece christening set attractively engraved with flowers and leaves. Sheffield. By W&H. Approx. 52 grams. Est. £20 - £30.

**171.** A large silver and turned wooden tea strainer with pierced body and gadroon rim. Birmingham 1972. By J&C Ltd. Est. £35 - £45.

**172.** A Georgian silver dish warmer with adjustable burner stand. (No burner.) Approx. 34 cms maximum diameter. Approx 463 grams. Est. £200 - £250.

**173.** A small fluted butter shell on ball feet. London. By GJ&S. Approx. 60 grams. Est. £20 - £30.

**174.** A two handled sugar bowl with scroll rim on pedestal base. Birmingham. By M&WV. Approx. 110 grams. Est. £30 - £50.

**175.** An attractively embossed berry spoon together with a Georgian tablespoon and a teaspoon. Various dates and makers. Approx. 135 grams. Est. £40 - £60.

**176.** A heavy Coronation beaker. London. By CS Ltd. Approx. 224 grams. Est. £70 - £80.

**177.** A small Georgian caddy spoon with fluted bowl and engraved handle. London. By ML. Est. £20 - £30.

**178.** A boxed three piece cruet set complete with BGLs and spoons. Birmingham. By CE Ltd. Est. £30 - £50.

**179.** A silver mounted vesta case together with a fluted example and one other. Approx. 51 grams. Est. £20 - £30.

**180.** A group of three large heavy silver vesta cases with hinge decoration. Approx. 84 grams. Est. £30 - £40.

**181.** A bag containing numerous plated and other vesta cases. Est. £20 - £30.

**182.** A silver and gold overlay vesta case with hinge top together with two other examples. Approx. 46 grams. Est. £30 - £40.

**183.** A group of three silver engraved vesta cases. Various dates and makers. Approx. 31 grams. Est. £20 - £30.

**184.** A pair of modern silver wine labels together with silver extending pencils etc. Est. £30 - £40..

**185.** An unusual walking cane mounted with a silver swan's head. Est. £50 - £80.

**186.** A good heavy Georgian sifter spoon with crested terminal together with a Scottish cream ladle and two other sauce ladles. Various dates and makers. Approx. 187 grams. Est. £80 - £120.

**187. OF CRICKETING INTEREST:** A good set of four napkin rings engraved with stumps, bat and ball. Birmingham 1928. Approx. 121 grams. Est. £100 - £150.

**188.** A matched pair of spill vases, the bodies of hammered effect with scroll decorated handles and tapering body, each on spreading foot, with vacant cartouche. One marked Birmingham 1904. By E&C Ltd. The other marked Edinburgh 1939. By E&C Ltd. Approx. 26 cms high. Approx. 850 grams. Est. £350 - £450.

**189.** An Indian cream jug heavily decorated with scrolls and flowers. Approx. 124 grams. Est. £30 - £40.

**190.** A good quality French engraved silver mounted walking stick engraved with flowers and leaves, together with an umbrella. Est. £50 - £60.

**191.** A domed five division toast rack of oval form. London. By WH&Co. Est. £60 - £80.

**192.** A pair of small oval sweet dishes decorated with ribbons and swags. Birmingham. By H&M. Approx. 93 grams. Est. £30 - £50.

**193.** A good silver waiter with cut corners. London. By G&S Co. Ltd. Approx. 373 grams. Approx. 23 cms across. Est. £150 - £200.

**194.** LIBERTY: A stylish sugar bowl with hammered effect. Birmingham. Numbered 9775. Approx. 134 grams. Est. £100 - £150.

**195.** An unusual tobacco jar, the top mounted with a pipe and lift off cover with detachable base. Chester 1901. By CC. Est. £120 - £150.

**196.** A pair of good cast French trencher salts with cut corners. Approx. 174 grams. Est. £200 - £300.

**197.** A turned Antique corkscrew with brush to side and ivory handle. Est. £60 - £80.

**198.** An unusual engine turned magnifying glass with ring handle. Est. £35 - £45.

**199.** An Antique bodkin case, the body attractively engraved with flowers and leaves and snake decoration. Approx. 17 grams. Est. £30 - £40.

**200.** A miniature Georgian style chamber stick and extinguisher. Apparently unmarked. Est. £60 - £80.

**201.** A good glass decanter, the body etched with flowers and leaves. London modern. Est. £40 - £60.

**202.** A heavy baluster shaped cream jug on pedestal base. London. By SW&Co. Approx. 102 grams. Est. £30 - £40.

**203.** A large Continental dressing table mirror with spreading feet. Approx. 36 cms high. Est. £100 - £150.

**204.** A large leather mounted blotter with pierced decoration. Birmingham modern. By BB&S. Est. £80 - £120.

### BEING SOLD ON BEHALF OF TRUSTEES:

**205.** An impressive in date Victorian embossed two handled cup profusely decorated with flowers, scrolls and leaves. Approx. 36 cms high. London 1879. approx. 1181 grams. Est. £350 - £450.

**206.** An impressive chased and embossed ewer of baluster form, the hinge top revealing a gilded interior, on pedestal base. Sheffield 1859. By FF&SF. Approx. 32 cms high. Approx. 788 grams. Est. £400 - £500.

**207.** A good heavy Queen Anne sugar caster of baluster form with lift-off cover. London 1710. By Charles Adam. (Marked to lid and base.) Approx. 167 grams. Est. £300 - £400.

**208.** EXETER: A Queen Anne silver tazza on flared foot, the plain turned top engraved with armorial. Exeter 1707. (Marked to top and foot.) Made by John Elston who was one of Exeter's most successful goldsmiths in the early 18th Century. He was significant in establishing the Exeter Assay Office in 1701 and became Mayor of Exeter in 1727. Approx. 21 cms diameter. Approx. 377 grams. Est. £5000 - £6000.



- 209.** A small hinged top cigarette box with crested armorial. London. By JH. *Est. £30 - £40.*
- 210.** A matched set of four Georgian berry spoons, the bodies decorated with flowers and leaves. Various dates and makers. Approx. 72 grams. *Est. £30 - £50.*
- 211.** A good pair of berry spoons, the stems decorated with flowers and scrolls and gilded the bowls mounted with fruit. Approx. 127 grams. *Est. £50 - £80.*
- 212.** A heavy set of six OE pattern table spoons. London 1797. By GB&WE. Approx. 378 grams. *Est. £100 - £150.*
- 213.** A good Georgian sugar caster of baluster design with pierced lift-off cover. London 1794. By Robert Peaston. Approx. 154 grams. *Est. £100 - £150.*
- 214.** A good Georgian style double lip sauce boat with scroll handle to pedestal base. London 1913. By Goldsmiths. Approx. 252 grams. *Est. £120 - £150.*
- 215.** A massive Georgian basting spoon. London 1762. By RB. Approx. 35 cms long. Approx. 161 grams. *Est. £150 - £200.*
- 216.** A good quality campana-shaped two handled cup, the body attractively decorated with oak leaves and acorns and gilded interior. Inscribed: "Presented To The Devon County Volunteer Association for Competition at their Rifle Prize Meetings by John Dawson Esq., Barley House, Exeter. Finally won by Capt. Pearse; 18th D.R.V Hatherleigh 1876". London 1837. By ES&W. Approx. 851 grams. *Est. £400 - £500.*
- 217.** A heavy pie crust circular salver, the front extensively signed on four hoof feet. London 1907. By CS&H. Approx. 1213 grams. *Est. £350 - £400.*
- 218.** A large plated salver with engraved decoration. Approx. 55 cms in diameter. *Est. £20 - £30.*
- 219.** A massive punch bowl together with matching ladle on pedestal base. *Est. £30 - £50.*
- 220.** A good quality two piece cruet in the form of a dog on rocky base. *Est. £40 - £60.*
- 221.** An Edwardian plated biscuit barrel with swing handle. *Est. £40 - £60.*
- 222.** A large impressive Mappin & Webb kettle on stand with signs of the zodiac. *Est. £30 - £50.*
- 223.** ASPREY: A good quality plated cutlery set contained within a box. *Est. £100 - £150.*
- 224.** An attractive three trumpet epergne with opaque glass trumpets and scroll decorated base. *Est. £30 - £50.*
- 225.** A good large plated biscuit barrel attractively engraved with flowers and leaves. *Est. £30 - £50.*
- 226.** An unusual cylindrical plated biscuit barrel on scroll decorated feet and horse finial. *Est. £40 - £60.*
- 227.** A pair of Sheffield plated candelabra with bead decoration. *Est. £30 - £50.*
- 228.** A large plated wine cooler with lion mask handles. *Est. £20 - £30.*
- 229.** An attractive sugar bowl, the body decorated with birds and flowers, and red glass liner. *Est. £25 - £35.*

THERE WILL NOW BE A 10 MINUTE  
BREAK



12



64



158



16



94



205



27



95



208



51



108



59



122



122

## JEWELLERY, WATCHES AND COINS

Lot 394

**230.** An attractive Antique pearl and diamond fringe necklace accompanied with matching drop, large central pearl and concealed clasp. *Est. £3500 - £4000.*

**231.** A large Edwardian pearl and diamond double heart ring with bow top in 18 carat gold. *Est. £1000 - £1200.*

**232.** An Edwardian diamond and pearl brooch in white gold mount with French hallmarks. *Est. £1500 - £1800.*

**233.** A large Antique amethyst and pearl brooch in gold setting. *Est. £400 - £500.*

**234.** Two silver and quartz pendants together with various earrings. *Est. £25 - £35.*

**235.** An 18 carat Antique buckle ring. Birmingham 1899. *Est. £150 - £200.*

**236.** An Antique gold mounted citrine brooch in claw mount. Approx. 5.6 grams. *Est. £50 - £60.*

**237.** Four amethyst stone set stick pins. *Est. £30 - £40.*

**238.** An Antique garnet brooch together with a gold gem stone scorpion brooch and one other. *Est. £60 - £80.*

**239.** A diamond single stone scarf ring together with a three stone brooch. Approx. 7.5 grams. *Est. £150 - £200.*

**240.** A long string of pearl beads with turquoise boat shaped clasp. *Est. £50 - £80.*

**241.** A pair of zircon cluster earrings in gold together with a three stone ring. *Est. £60 - £80.*

**242.** A small daisy head cluster ring in claw mount and 18 carat gold. *Est. £100 - £150.*

**243.** A good Antique 17 stone amethyst necklace with large concealed clasp and rubover mounts. Approx. 65.6 grams. *Est. £3500 - £4000.*

**244.** A good bloodstone seal with chased ring. *Est. £50 - £60.*

**245.** A small bloodstone fob with embossed decoration together with a watch key. *Est. £60 - £80.*

**246.** Two heavy bags of mixed semi-precious and other stones. *Est. £60 - £80.*

**247.** An 18 carat diamond gypsy set ring in claw mount. *Est. £300 - £400.*

**248.** BELLE EPOQUE: A fine pendant with cluster links and pierced decoration, the large central diamond surrounded by emeralds set in platinum. Approx. 15 cms long. *Est. £10000 - £15000.*

**249.** CASTELLANI: A high carat fringe necklace with ball links, urn drops, wire work decoration and concealed barrel clasp together with matching brooch in the form of a ram. *Est. £15000 - £20000.*

**250.** A small gilt cross together with a coral hand and gold earrings. *Est. £30 - £40.*

**251.** A heavy silver bracelet mounted with numerous charms. Approx. 127 grams. *Est. £40 - £60.*

**252.** An 18 carat gent's signet ring inset with hard stone. Approx. 7.8 grams. *Est. £100 - £150.*

**253.** A 9 carat fine link chain together with other gold earrings, pendants etc. Approx. 6.7 grams. *Est. £50 - £80.*

**254.** A stylish 18 carat emerald and diamond cluster ring in claw mount. Approx. 4.4 grams. *Est. £150 - £200.*

**255.** A 15 carat signet ring inset with cornelian. Approx. 6.8 grams. *Est. £100 - £150.*

**256.** A 9 carat oval signet ring inset with cornelian. Approx. 3.2 grams. *Est. £30 - £50.*

**257.** An attractive silver collar in the form of an entwined snake with concealed clasp. *Est. £100 - £150.*

**258.** A pair of Antique coral earrings in the form of flowers together with matching brooch. *Est. £120 - £150.*

**259.** An Antique gold brooch with filigree decoration and carved central stone. *Est. £80 - £120.*

**260.** An Antique string of graduated pearls with a gold concealed clasp. *Est. £20 - £30.*

**261.** A circular gold and enamel brooch with engine turned decoration and locket back. Approx. 5.2 grams. *Est. £50 - £80.*

**262.** A modern 9 carat three colour gold necklace with ring clasp. Approx. 7.4 grams. *Est. £60 - £80.*

**263.** An attractive Victorian ruby, sapphire and diamond brooch in the form of a flower, contained within a fitted box. *Est. £250 - £300.*

**264.** Two silver mounted strings of freshwater pearls. *Est. £30 - £50.*

**265.** A pair of graduated coral drop earrings in high carat gold. Approx. 6.2 grams. *Est. £60 - £80.*

**266.** A good pair of Antique coral bracelets with concealed gold clasps. *Est. £60 - £80.*

- 267.** A heavily carved brooch in the form of a cherub with carved rose petal decoration. Est. £60 - £80.
- 268.** A pair of coral and rose diamond circular ear studs with gold mounts. Est. £50 - £80.
- 269.** A small ruby and diamond ring together with a diamond five stone ring etc. Approx. 4.5 grams. Est. £60 - £80.
- 270.** Two 9 carat wedding bands. Approx. 4.7 grams. Est. £40 - £60.
- 271.** An opal cluster ring in gold together with a turquoise set ring. Approx. 3.3 grams. Est. £30 - £50.
- 272.** A silver brooch together with a ring, pendants, silver ingot etc. Est. £20 - £30.
- 273.** A good Antique ruby, sapphire and diamond brooch in the form of a butterfly with large claw mounted opal. Est. £250 - £300.
- 274.** GEORG JENSEN: A stylish silver ring with domed centre, numbered 46. Est. £220 - £260.
- 275.** A 9 carat turquoise brooch with locket back together with amethyst earrings. Approx. 5.5 grams. Est. £30 - £50.
- 276.** An unusual seed pearl and turquoise brooch together with matching earrings mounted in gold and silver. Approx. 21 grams. Est. £100 - £150.
- 277.** CARTIER: A good quality 18 carat white gold love bracelet, the textured body inset with two diamonds. Signed to interior, and marked: ip 6688, together with original signed screwdriver. Approx. 18.1 grams. Est. £1000 - £1200.
- 278.** An attractive 18 carat ruby and diamond seven stone half hoop ring in carved mount. Est. £1500 - £2000.
- 279.** A good Antique sapphire and diamond oval cluster ring in platinum claw mount. Est. £1000 - £1500.
- 280.** A large silver and rubellite guard chain with concealed clasp. Est. £80 - £120.
- 281.** An attractive miniature enamel decorated fringe necklace in silver with ring clasp. Est. £60 - £80.
- 282.** A stylish silver and citrine necklace / pendant with ring clasp. Est. £120 - £150.
- 283.** A pair of unusual Continental silver gilt earrings with loop tops. Approx. 56 grams. Est. £50 - £80.
- 284.** A small diamond single stone ring in claw mount. Est. £100 - £150.
- 285.** An 18 carat diamond twist ring together with a 9 carat claw mounted ring. Approx. 4.3 grams. Est. £40 - £50.
- 286.** A small gold malachite pendant on fine link 9 carat chain. Approx. 5.5 grams. Est. £40 - £60.
- 287.** A silver engraved collar with ring clasp. Approx. 28 grams. Est. £20 - £30.
- 288.** A small silver curb link charm bracelet with ring clasp. Approx. 60 grams. Est. £30 - £50.
- 289.** A massive silver Scottish Dirk brooch with engraved decoration. Approx. 29 grams. Est. £300 - £350.
- 290.** A heavy belcher link long guard chain. Approx. 33 grams. Est. £400 - £450.
- 291.** An unusual signet ring mounted with a rock crystal cow and scroll decoration. Est. £700 - £800.

- 292.** An attractive finely carved cameo of a lady and dog in gold scroll decorated frame. Est. £300 - £350.
- 293.** An oval garnet cluster ring with scroll decoration. Approx. 5.2 grams. Est. £50 - £60.
- 294.** A ball mounted torque bangle. Approx. 15 grams. Est. £40 - £60.
- 295.** A pair of jade ball earrings with clip-on backs. Est. £20 - £30.
- 296.** A circular silver and green stone brooch with reeded decoration. Est. £25 - £35.
- 297.** AUTUMN GOLD: A stylish pendant in the form of a leaf together with matching earrings. Approx. 8.3 grams. Est. £80 - £120.
- 298.** An Antique pendant in the form of entwined snakes on fine link chain. Approx. 21 grams. Est. £40 - £60.
- 299.** An unusual silver gilt necklace in the form of serpents. Est. £50 - £60.
- 300.** A 9 carat pearl and green stone pendant with loop top. Est. £80 - £100.
- 301.** A good Antique garnet and pearl necklace / pendant with pierced body on gold link chain. Approx. 11.5 grams. Est. £400 - £450.
- 302.** A fine link Antique 15 carat guard chain. Approx. 8.1 grams. Est. £180 - £220.
- 303.** A large brooch in the form of a bee, the large cabochon ruby surrounded by pavé set diamond wings with central sapphire and outstretched legs. Approx. 5 cms across. Est. £2500 - £3000.
- 304.** A rare Essex crystal brooch of oval form depicting a horse and carriage in gold frame with pearl mounts. Est. £600 - £700.
- 305.** A pair of emerald and diamond teardrop earrings in gold together with matching cluster ring. Approx. 4.1 grams. Est. 350 - £60.
- 306.** A bundle of numerous 9 carat earrings. Approx. 6.8 grams. Est. £50 - £60.
- 307.** A 9 carat opal and garnet modernistic cluster ring. Approx. 5.9 grams. Est. £50 - £60.
- 308.** A diamond single stone ring mounted in white gold and platinum, the central stone measuring approx. 0.4 carats. Est. £150 - £200.
- 309.** A silver collar with ring clasp. Approx. 13.7 grams. Est. £20 - £30.
- 310.** A 9 carat box link bracelet with concealed clasp. Approx. 8.4 grams. Est. £60 - £80.
- 311.** A Norwegian rectangular enamelled brooch of square form. Est. £50 - £80.
- 312.** A good quality high carat gold bracelet attractively decorated with balls and wire work and 52 diamonds. Approx. 31.2 grams. Est. £700 - £1000.
- 313.** An Antique turquoise and agate brooch with scroll decoration. Est. £40 - £60.
- 314.** A pair of rose diamond earrings in gold and silver claw mount. Est. £250 - £300.
- 315.** A pair of green stone and agate cufflinks. Est. £20 - £30.
- 316.** An unusual 18 carat gold brooch in the form of a fox, the textured body decorated with diamonds. Approx. 7.1 grams. Est. £500 - £700.
- 317.** A large oval emerald and diamond cluster ring in 18 carat claw setting. Est. £1400 - £1800.



- 318.** A large Georgian agate seal with reeded border and loop top, with intaglio to base. Approx. 4 cms high. *Est. £250 - £300.*
- 319.** A diamond single stone ring, the central stone measuring approx. 1.25 carats, within tapered shoulders. *Est. £1000 - £1500.*
- 320.** A 9 carat heart shaped bracelet together with a necklace. Approx. 4.8 grams. *Est. £40 - £60.*
- 321.** A small gold pendant mounted with a duck. Approx. 4.6 grams. *Est. £40 - £60.*
- 322.** An 18 carat and platinum five stone diamond half hoop ring in carved mount. *Est. £100 - £150.*
- 323.** A 9 carat amethyst modernistic ring in claw mount. Approx. 4.7 grams. *Est. £45 - £55.*
- 324.** A small diamond V-shaped ring in 18 carat heart shaped mount. Approx. 2.8 grams. *Est. £40 - £60.*
- 325.** An 18 carat sapphire and diamond cluster ring. Approx. 2.3 grams. *Est. £30 - £50.*
- 326.** A good diamond half eternity ring in 18 carat white gold setting. Approx. 5.5 grams. *Est. £150 - £200.*
- 327.** A 9 carat plain wedding band together with a crystal ring. Approx. 4.1 grams. *Est. £30 - £50.*
- 328.** Two 9 carat sapphire and diamond cluster rings. Approx. 4.3 grams. *Est. £40 - £60.*
- 329.** A good diamond carved half hoop ring in claw mount. *Est. £500 - £600.*
- 330.** A small engraved scent bottle with hinged top. (Slight damage). Birmingham. By SM. *Est. £30 - £40.*
- 331.** A small tortoiseshell scent bottle with hinged top and fitted interior. *Est. £30 - £40.*
- 332.** A pair of miniature binoculars together with another pair. *Est. £20 - £30.*
- 333.** A large diamond single stone ring in six claw 18 carat gold mount. Approx. 6 carats. *Est. £12000 - £15000.*
- 334.** A stylish silver and amethyst necklace with ball decoration and concealed clasp. Approx. 74.8 grams. *Est. £140 - £160.*
- 335.** A silver and moonstone fringe necklace. *Est. £70 - £80.*
- 336.** A large five strand quartz necklace in silver. Approx. 96 grams. *Est. £80 - £100.*
- 337.** A silver and moonstone brooch with textured leaves. *Est. £80 - £100.*
- 338.** A large Antique Georgian garnet and pearl brooch of oval design and large central stone. Approx. 6 cms across. *Est. £150 - £200.*
- 339.** CHILDS & CHILDS: A two part buckle with pierced decoration inset with turquoise. Approx. 40 grams. *Est. £120 - £150.*
- 340.** A diamond two stone crossover ring in 18 carat. Approx. 2 grams. *Est. £30 - £40.*
- 341.** A gold sapphire and diamond seven stone ring together with an eternity ring. Approx. 2. 8 grams. *Est. £25 - £35.*
- 342.** An 18 carat sapphire and diamond cluster ring in claw mount. (Stone missing). Approx. 4.6 grams. *Est. £50 - £80.*
- 343.** A small diamond boat shaped ring in 18 carat mount. Approx. 2.4 grams. *Est. £40 - £60.*

**344.** A diamond single row ring in 9 carat with rubover mount. Approx. 2 grams. Est. £20 - £40.

**345.** A 9 carat domed wedding band. Approx. 4 grams. Est. £40 - £60.

**346.** A 9 carat amethyst and pearl pendant on fine link chain. Approx. 5.2 grams. Est. £120 - £150.

**347.** A 9 carat amethyst and pearl pendant on fine link chain. Approx. 7 grams. Est. £120 - £150.

**348.** A diamond single stone ring, the brilliant cut stone weighing approx. 1.01 carats, of I colour, VVSI. Accompanied with certificate. Est. £3000 - £4000.

**349.** A good diamond three stone ring in platinum carved mount. Est. £1200 - £1500.

**350.** A heavy silver Mexican necklace and matching pendant. Approx. 42 grams. Est. £20 - £30.

**351.** Four gold rings of various designs together with a silver ring. Approx 10.2 grams, (7.8 + 2.4 grams). Est. £60 - £80.

**352.** A gold mounted string of cultured pearls together with a silver mounted string of pearls. Est. £40 - £60.

**353.** A single pearl and diamond earring in gold mount. Est. £30 - £50.

**354.** A large topaz and gold oval brooch with leaf decoration together with similar earrings. approx. 21.8 grams. Est. £80 - £120.

**355.** An unusual emerald and diamond three stone ring with triangular stones to shoulder in 14 carat band. Est. £200 - £250.

**356.** A small 18 carat wedding band. Approx. 2.3 grams. Est. £30 - £50.

**357.** A garnet single stone signet ring in claw mount. Approx. 2.7 grams. Est. £25 - £30.

**358.** A sapphire and diamond five stone half hoop ring in claw mount. Approx. 2.5 grams. Est. £100 - £150.

**359.** A diamond three stone ring in 18 carat and platinum claw mount. Est. £60 - £80.

**360.** A sapphire and diamond three stone ring in 18 carat claw mount. Est. £200 - £250.

**361.** An 18 carat ruby and diamond crossover ring in two colour gold. Approx. 2.5 grams. Est. £30 - £50.

**362.** A heavy six sovereign mounted gold bracelet in 18 carat frame with concealed clasp. Approx. 77.5 grams. Est. £1200 - £1500.

**363.** A large oval crystal pendant / brooch depicting cherubs with blue background in gold frame. Est. £700 - £900.

**364.** An unusual pair of diamond four stone rings in 18 carat gold with folding back. Est. £800 - £1200.

**365.** A large rock crystal and gold fringe necklace on suspension chain with barrel clasp. Est. £800 - £1000.

**366.** A good Antique green stone cross with loop top. Approx. 8 cms long. Est. £600 - £700.

**367.** A good quality 18 carat signet ring with crested centre and reeded body. Approx. 9.5 grams. Est. £250 - £300.

**368.** A Links of London silver bracelet with charm and bar. Approx. 30 grams. Together with a pencil. Est. £30 - £40.

**369.** A pair of 9 carat cufflinks with engraved decoration. Approx. 4.2 grams. Est. £60 - £80.

**370.** A small modern locket on fine link chain together with one other. Approx. 6.7 grams. Est. £50 - £60.

**371.** A 1927 gold sovereign mounted as a brooch. Approx. 14 grams. Est. £200 - £250.

**372.** A heavy 22 carat plain wedding band of domed form. Approx. 9 grams. Est. £150 - £200.

**373.** A 9 carat gate bracelet together with gold brooches. Approx. 8.9 grams. Est. £60 - £80.

**374.** A pair of good quality large Georgian earrings mounted as leaves with matching drops to loop top. Approx. 5.5 cms long. Est. £5000 - £7000.

**375.** A pink and yellow sapphire Antique crossover ring with rope twist decoration. Approx. 3.1 grams. Est. £600 - £700.

**376.** A small diamond single stone gypsy set ring in 18 carat claw mount. Approx. 2.8 grams. Est. £80 - £120.

**377.** A small gold ingot on fine link chain. Approx. 7.5 grams. Est. £60 - £80.

**378.** A 9 carat fine link necklace with ring clasp. Approx. 6 grams. Est. £50 - £60.

**379.** A 9 carat rope twist neck chain. Approx. 8.1 grams. Est. £60 - £80.

**380.** A 9 carat single stone pearl ring inset in gold together with one other. Approx. 7.5 grams. Est. £60 - £80.

**381.** A group of three 9 carat gem set rings. Approx. 6.8 grams. Est. £50 - £80.

**382.** An attractive aquamarine and pearl bracelet with gold ring clasp. Approx. 7 grams. Est. £200 - £300.

**383.** An unusual diamond brooch in the form of a butterfly, the articulated wings surrounding central large diamond to body with ruby eyes, and contained within a fitted box. Est. £2500 - £3000.

**384.** A stylish silver and enamelled bracelet together with an oval locket. Approx. 27.7 grams. Est. £25 - £35.

**385.** A high carat onyx and gold cluster ring with scroll decoration. Approx. 8.1 grams. Est. £140 - £160.

**386.** A heavy 15 carat diamond single stone gypsy set ring. Est. £70 - £80.

**387.** A pair of unusual 9 carat cufflinks in the form of the number "55". Approx. 4.8 grams. Est. £50 - £80.

**388.** A small Antique cameo ring in gold. Est. £70 - £90.

**389.** An unusual 18 carat gold mounted ring mounted with a fossil in claw mount. Approx. 10.7 grams. Est. £150 - £200.

**390.** A silver gilt and seed pearl fringe necklace with ring clasp. Est. £50 - £80.

**391.** A large stylish high carat gold and ruby clip brooch with scroll decoration. Approx. 11.8 grams. Est. £250 - £300.

**392.** Two pairs of 9 carat hoop earrings. Approx. 6 grams. Est. £40 - £60.

**393.** A 9 carat fine link chain with ring clasp. Approx. 10.5 grams. Est. £80 - £120.

- 394.** A heavy gold ruby and diamond bracelet with concealed clasp. Approx. 24.3 grams. Est. £250 - £300.
- 395.** A pair of pearl and gold earrings of textured design. Approx. 9.7 grams. Est. £30 - £50.
- 396.** A pair of 18 carat diamond earrings. By Hamilton. Approx. 7 grams. Est. £80 - £120.
- 397.** An 18 carat multi gem set necklace with tassel drops. Approx. 13.5 grams. Est. £100 - £150.
- 398.** Two plain 9 carat wedding bands. Approx. 6.7 grams. Est. £50 - £80.
- 399.** An unusual Eastern necklace depicting miniature watercolours in gold frame, with suspension chain, together with matching earrings. Est. £1200 - £21500.
- 400.** An unusual gold snuff box of circular design with large central carved emerald and wavy edge. Approx. 50 grams. Est. £2000 - £2500.
- 401.** An onyx and diamond cocktail ring in claw mount. Approx. 3.3 grams. Est. £400 - £500.
- 402.** A sapphire and diamond five stone half hoop ring in claw mount. Approx. 4.6 grams. Est. £40 - £50.
- 403.** A 9 carat garnet mounted half hoop nine stone ring. Approx. 4.6 grams. Est. £40 - £60.
- 404.** A 9 carat hinged bangle with engraved decoration. Approx. 24 grams. Est. £150 - £200.
- 405.** An 18 carat two stone crossover ring in claw mount. Approx. 5 grams. Est. £80 - £120.
- 406.** A group of four heavy gold gem set rings. Approx. 31.6 grams. Est. £150 - £200.
- 407.** A large group of silver and other rings and pendants. Est. £20 - £30.
- 408.** An attractive Antique garnet and pearl ring with textured body. Est. £40 - £60.
- 409.** Three pairs of gold cufflinks. Approx. 5.8 grams. Est. £50 - £80.
- 410.** A pair of garnet and gold earrings together with hoop earrings and paste earrings. Est. £20 - £30.
- 411.** A Continental 14 carat wedding band. Approx. 1.8 grams. Est. £30 - £50.
- 412.** An attractive silver fringe necklace with gold overlay. Est. £20 - £30.
- 413.** A gold and green stone 14 carat necklace in claw mount. Approx. 35 grams. Est. £60 - £80.
- 414.** A pair of turquoise and pearl earrings together with coral earrings. Est. £20 - £30.
- 415.** A small gold pendant together with gold earrings and a brooch. Approx. 12 grams. Est. £80 - £120.
- 416.** An unusual blue stone cameo brooch in rope twist frame. Est. £50 - £80.
- 417.** A good pair of Edwardian daisy cluster earrings mounted on knife edge spacers to loop tops in gold. Est. £2000 - £2500.
- 418.** A group of gold hoop earrings. Approx. 15.2 grams. Est. £120 - £150.
- 419.** A silver curb link charm bracelet with ring clasp. Approx. 47 grams. Est. £30 - £40.
- 420.** A small gold cross on fine link chain together with a single stone pendant on chain. Approx. 6.3 grams. Est. £50 - £80.
- 421.** A 9 carat cameo on fine link chain. Approx. 9.3 grams. Est. £50 - £60.

- 422.** A 9 carat curb link necklace together with one other. Approx. 6.5 grams. *Est. £50 - £80.*
- 23.** A pair of 9 carat cufflinks together with a small oval cameo. Approx. 10.1 grams. *Est. £60 - £80.*
- 424.** A large group of 9 carat and other earrings. Approx. 7.1 grams. *Est. £50 - £80.*
- 425.** A 9 carat hollow bangle with engraved decoration. Approx. 11.7 grams. *Est. £80 - £120.*
- 426.** A 9 carat five bar gate bracelet with heart shaped padlock. Approx. 22.6 grams. *Est. £180 - £220.*
- 427.** A small 18 carat wedding band. Approx. 2.7 grams. *Est. £30 - £50.*
- 428.** A stylish platinum cocktail ring, the large central pearl supported by two brilliant cut diamonds. *Est. £1600 - £1800.*
- 429.** A Continental 18 carat emerald, coral and diamond cluster ring. Approx. 10.5 grams. *Est. £500 - £700.*
- 430.** A silver handmade necklace. Approx. 29.3 grams. *Est. £40 - £60.*
- 431.** An attractive tourmaline and diamond brooch decorated with flowers and leaves in 15 carat. Approx. 6.8 grams. *Est. £120 - £150.*
- 432.** A small watch key in the form of a pistol. *Est. £20 - £30.*
- 433.** An 18 carat brooch in the form of a tennis racket and ball. Approx. 2.6 grams. *Est. £60 - £80.*
- 434.** A pair of piqué earrings of graduated design with ball tops. *Est. £70 - £90.*
- 435.** A pearl and amethyst mourning brooch with loop top. *Est. £60 - £80.*
- 436.** A pair of pearl and gold mounted cufflinks on suspension chains. *Est. £50 - £80.*
- 437.** A diamond full eternity ring in platinum mount. Approx. 3.6 grams. *Est. £70 - £90.*
- 438.** A 9 carat modern identity bracelet with concealed clasp. Approx. 29 grams. *Est. £220 - £260.*
- 439.** A good Antique high carat agate bracelet with concealed clasp. Approx. 25 grams. *Est. £150 - £200.*
- 440.** A modern 18 carat diamond and sapphire cluster ring. Approx. 3.7 grams. *Est. £50 - £80.*
- 441.** An unusual green stone bead necklace on fine link chain. *Est. £20 - £30.*
- 442.** An 18 carat white gold plain wedding band. Approx. 2 grams. *Est. £40 - £60.*
- 443.** A good pair of diamond single stone ear studs in attractively pierced claw mounts weighing over 2.5 carats approx., contained within a box. *Est. £6500 - £7500.*
- 444.** A heavy 18 carat textured link bracelet with concealed clasp. Approx 77.4 grams. *Est. £1300 - £1500.*
- 445.** A heavy 9 carat graduated charm bracelet with heart shaped padlock. Approx. 56.5 grams. *Est. £450 - £550.*
- 446.** A cabochon garnet and gold mounted necklace with concealed clasp. *Est. £50 - £80.*
- 447.** Three large strings of amber beads. Approx. 274 grams. *Est. £200 - £250.*
- 448.** A small Antique garnet ring together with an Essex crystal brooch etc. *Est. £30 - £50.*

**449.** A silver and paste necklace together with a sapphire mounted full eternity ring. Est. £20 - £30.

**450.** An oval carved ivory cameo of a lady's head together with one other. Est. £30 - £40.

**451.** A pair of Antique seed pearl earrings with loop tops. Est. £20 - £30.

**452.** An important Art Deco single stone diamond ring, the large central stone weighing approx. 4.02 carats, surrounded by baguette cut diamond shoulders in stylish platinum mount. Est. £15,000 - £20,000.

**453.** A good diamond single stone mounted as a pendant in white gold claw mount upon a gold chain with ring clasp and safety clasp. Approx. 4.08 carats. Est. £12,000 - £15,000.

**454.** A stylish brooch in the form of a flower with three large cabochon turquoises supported by pave set leaves to large central stone on baguette cut stem. Approx. 8.5 cms long. Est. £5000 - £6000.

**455.** A diamond pendant / necklace fashioned of collet mounted stones surrounding a large central stone upon knife edge spacers connecting to two rows of diamonds with floral mounts on fine link backchain and box clasp. Est. £7000 - £10000.

**456.** A pair of Burberry cufflinks together with some shotgun cartridge cufflinks. Est. £20 - £30.

**457.** A collection of costume jewellery. Est. £20 - £30.

**458.** A collection of costume jewellery. Est. £20 - £30.

**459.** A collection of costume jewellery. Est. £20 - £30.

**460.** A collection of costume jewellery. Est. £20 - £30.

**461.** A collection of costume jewellery. Est. £20 - £30.

**462.** A collection of costume jewellery. Est. £20 - £30.

**463.** A collection of costume jewellery. Est. £20 - £30.

**464.** A collection of costume jewellery. Est. £20 - £30.

**465.** A collection of costume jewellery. Est. £20 - £30.

**466.** A collection of costume jewellery. Est. £20 - £30.

**467.** A silver open faced pocket watch with white enamel dial and subsidiary seconds' dial. Est. £20 - £30.

**468.** A lady's 9 carat Rotary wristwatch on mesh strap. Approx. 15 grams. Est. £120 - £150.

**469.** BVLGARI: A gent's 18 carat white gold Automatic Ergon wristwatch on black leather strap within a fitted box. Est. £6500 - £7000.

**470.** FRANCK MULLER: A gent's wristwatch on brown leather strap complete with paperwork and tan leather travelling case. Est. £2200 - £2600.

**471.** A lady's 9 carat Omega wristwatch on mesh strap. Approx. 26 grams. Est. £200 - £250.

**472.** A silver curb link double watch Albert complete with bar and fob. Est. £80 - £100.

**473.** WALTHAM: A large gent's pocket watch with white enamel dial and subsidiary seconds' dial. Est. £50 - £80.



**474.** A gent's full hunter pocket watch with white enamel dial and subsidiary seconds' dial. *Est. £40 - £60.*

**475.** IWC: A large gent's Portugieser Chrono-Automatic wristwatch on black leather strap within a fitted box and complete with paperwork. *Est. £3000 - £3500.*

**476.** ROLEX: A gent's Rolex Oyster Submariner with black dial. *Est. £3500 - £4000.*

**477.** CARTIER: A lady's gold and stainless steel wristwatch, the rectangular dial with gold bezel and sapphire winder. *Est. £800 - £1200.*

**478.** A gent's Bernex wristwatch on black leather strap. *Est. £40 - £60.*

**479.** A gent's gold plated Elgin wristwatch with white enamel dial and subsidiary seconds' dial. *Est. £30 - £50.*

**480.** A gent's gun metal pocket watch together with a small gold wristwatch. *Est. £20 - £30.*

**481.** A gent's 9 carat Rotary wristwatch with white enamel dial. Approx. 49 grams. *Est. £350 - £450.*

**482.** ROLEX: A gent's stainless steel and gold Rolex wristwatch with blue dial and date aperture on blue leather strap. *Est. £1500 - £2000.*

**483.** ROLEX: A lady's stainless steel and gold wristwatch with date aperture, gilded dial and Rolex strap. *Est. £1800 - £2000.*

**484.** An attractive Continental fob watch, the silver body decorated with gold flowers and birds. *Est. £40 - £60.*

**485.** A large gent's pocket watch, the case decorated with gold overlay and engraving. *Est. £80 - £100.*

**486.** A gent's silver open faced pocket watch with white enamel dial and subsidiary seconds' dial. *Est. £50 - £80.*

**487.** A gent's silver open faced pocket watch with white enamel dial and gold hinges together with a key. *Est. £30 - £50.*

**488.** CARTIER: A gent's Roadster Automatic in stainless steel contained within a fitted box. *Est. £1500 - £2000.*

**489.** ROLEX: An Oyster Date wristwatch with white enamel dial, subsidiary seconds' hand and date aperture. *Est. £1800 - £2000.*

**490.** PIERCE: A gent's stainless steel chronograph wristwatch on brown leather strap. *Est. £250 - £300.*

**491.** CARTIER: A good quality lady's 18 carat wristwatch with silver dial and sapphire winder on mesh strap, complete with paperwork. *Est. £1800 - £2000.*

**492.** A heavy silver curb link double watch Albert with bar and fob. Approx. 91 grams. *Est. £50 - £80.*

**493.** A silver half Hunter wristwatch with hinge top and white enamel dial. *Est. £80 - £120.*

**494.** A good 9 carat curb link double watch Albert together with bar. Approx. 38 grams. *Est. £350 - £400.*

**495.** A 9 carat unused wedding band with engraved decoration. Approx. 3.6 grams. *Est. £35 - £45.*

**496.** A large agate pendant on fine link chain. *Est. £20 - £30.*

**497.** A 14 carat pearl dress ring. Approx. 2.1 grams. Together with two dress rings. *Est. £30 - £40.*

**498.** A good ruby pear shaped single stone ring in claw mount surrounded by two coffin shaped diamonds in platinum setting. *Est. £3000 - £4000.*

**499.** No Lot.

**500.** No Lot

**501.** A 1820 gold coin mounted as a pendant with loop top. Approx. 8 grams. *Est. £150 - £200.*

**502.** A 1788 half guinea mounted as a pendant with loop top . Approx. 4.5 grams. *Est. £60 - £80.*

**503.** An 1892 half sovereign mounted as a pendant with loop top. Approx. 4.3 grams. *Est. £60 - £80.*

**504.** An 1897 half sovereign mounted as a pendant with loop top. Approx. 4.6 grams. *Est. £80 - £100.*

**505.** A 1911 half sovereign mounted as a pendant with loop top. Approx. 4.3 grams. *Est. £80 - £100.*

**506.** An 1890 sovereign mounted as a pendant with loop top. Approx. 8.1 grams. *Est. £150 - £200.*

**507.** A 1958 sovereign mounted as a pendant with loop top. *Est. £150 - £200.*

**508.** A 1914 sovereign mounted as a pendant with loop top. *Est. £150 - £200.*

**509.** A 1900 half sovereign ring in pierced gold mount. Approx. 8.8 grams. *Est. £100 - £150.*

**510.** A 1913 half sovereign ring in pierced gold mount. Approx. 8.8 grams. *Est. £100 - £150.*

**511.** An 1892 five Shilling together with an 1844 Crown. *Est. £20 - £30.*

**512.** An 1849 and an 1874 five Franc silver coin. *Est. £20 - £30.*

**513.** A heavy copper George III token together with a bronze commemorative coin etc. *Est. £20 - £30.*

**514.** Two commemorative coins dated 1804 and 1809. *Est. £20 - £30.*

**515.** A bag containing early Georgian and other tokens. *Est. £40 - £60.*

**516.** A bag containing early tokens and silver coins. *Est. £30 - £40.*

**517.** A 1794 French coin. *Est. £30 - £50.*

**518.** A group of early Islamic coins. *Est. £30 - £50.*

**519.** An 1819 George III Crown together with another mounted as a pendant. *Est. £20 - £30.*

THIS CONCLUDES TODAY'S  
PROCEEDINGS.

PICTURES, COLLECTABLES, CHINA  
AND FURNITURE WILL COMMENCE  
TOMORROW AT 10.00 AM.



248 & 249



279



326



267



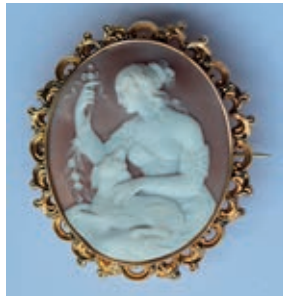
291



349



274



292



362



276



312



371



277



316



374



383



452



491, 477 & 483



391



475



502



428



476



516



432



488



517



439

FRIDAY 11<sup>TH</sup> AUGUST AT 10.00AM

## PICTURES

**520.** ALICE MACALLAN SWAN: Still life entitled "Harmony in Yellow and Gold". Framed. Approx. 54 cms x 75 cms. Verso: inscribed "Purchased by Miss Swan's Nephew Robert Wemyss Symonds in March 1939" to top right and central inscription with title and artists name, and "78 Milson Road, Kensington, W 14". Est. £100 - £200.

**521.** A small watercolour of a hunting scene in gilt frame. Unsigned. Approx. 25 cms x 19 cms. Est. £50 - £80.

**522.** J CLARK: Oil on canvas of horse in gilt frame. Approx. 25 cms x 20 cms. Est. £100 - £150.

**523.** J CLARK: Oil on canvas of horse in gilt frame. Signed and dated. Approx. 24 cms x 19 cms. Est. £100 - £150.

**524.** A FRANK: A large oil on canvas of a Continental village scene. Signed and dated 1873. Approx. 39 cms x 55 cms. Est. £100 - £150.

**525.** A small wool work tapestry sampler of Exeter. Approx. 29 cms x 38 cms. Est. £20 - £30.

**526.** HOPKINS: A large oil on canvas of children by a stream. Approx. 94 cms x 82 cms. Est. £50 - £80.

**527.** DAVID SHEPHERD: A group of three signed prints of wild animals. Est. £30 - £40.

**528.** An old framed and glazed sampler. Undated. Approx. 32 cms x 42 cms. Est. £30 - £40.

**529.** A large Oriental wallpaper picture decorated with figures and landscape. Approx. 88 cms x 124 cms. Est. £100 - £150.

Lot 552



**530.** A large gilt frame. Approx. 64 cms x 72 cms. *Est. £20 - £30.*

**531.** An Oriental print of birds. Signed. Approx. 24 cms x 27 cms. *Est. £30 - £50.*

**532.** An oil on board of ships in rough seas in gilt frame. Unsigned. Approx. 38 cms x 18 cms. *Est. £100 - £150.*

**533.** I BIDDLE: A portrait of a young girl. Oil on canvas. Approx. 57 cms x 47 cms. *Est. £250 - £300.*

**534.** An oil on canvas depicting a solemn faced aged man with bushy moustache. (Possibly Stalin). Unsigned. Approx. 56 cms x 45 cms. *Est. £50 - £80.*

**535.** LAINA NAI0: "Home of The Long-Tailed Tit." Oil on Canvas. Dated 1896. Approx. 34 cms x 45 cms. *Est. £30 - £50.*

**536.** A Chinese rice picture decorated with birds and flowers. Signed. Approx. 48 cms x 92 cms. *Est. £30 - £50.*

**537.** H CHENG: A Chinese harbour scene. Oil on Canvas. Approx. 50 cms x 70 cms. *Est. £40 - £60.*

**538.** HENRI-CHARLES MANGUIN: A French woodland scene entitled "De Haze". Oil on board. Signed "Manguin" to bottom left and dated 1927. Approx. 59 cms x 49 cms. *Est. £200 - £300.*

**539.** A portrait of a girl with flower. Oil on canvas. Framed. Approx. 37 cms x 47 cms. *Est. £50 - £60.*

**540.** "Our Retreat, Thorpe Green, Surrey." Oil painting in gilt frame. Approx. 26 cms x 19 cms. *Est. £80 - £120.*

**540A.** HENDRIK WILLEM MESDAG (1831 - 1915): Dutch fishing boats on stormy shore, oil on canvas in gilt frame labelled L Slot & Zonen. Approx. 13.5 cms x 44 cms. *Est. £4000 - £6000.*

**541.** CECIL ALDIN: A framed and glazed print of five newborn chicks. Approx. 87 cms x 22 cms. *Est. £120 - £150.*

**542.** A rosewood framed tapestry of a religious scene. Approx. 26 cms x 31 cms. *Est. £20 - £30.*

**543.** A pair of framed and glazed animal prints. Approx. 15 cms x 21 cms. *Est. £20 - £30.*

**544.** "The Nursery Of Heaven." A framed and glazed watercolour. Approx. 21 cms x 29 cms. *Est. £40 - £60.*

**545.** JOHN DUGMORE: "St. Michael's Mount." A framed and glazed watercolour. Approx. 28 cms x 22 cms. *Est. £20 - £30.*

**546.** NICOLA SLATTERY: "The Secret". A framed and glazed watercolour. Approx. 22 cms x 23 cms. *Est. £80 - £120.*

**547.** An oval framed oil on board depicting Highland cattle with blue skies. Approx. 61 cms x 46 cms. *Est. £150 - £200.*

**548.** A naked infant. Surrealist style pastel on card. Approx. 22 cms x 29 cms. Signed to bottom right: Max Ernst.

**549.** A print after Picasso. Approx. 30 cms x 38 cms. *Est. £20 - £30.*

**550.** An oil on card depicting a religious scene in gilt frame. Approx. 35 cms x 27 cms. *Est. £40 - £60.*

**551.** JOHN CORK: A Medieval scene. Oil on board. Approx. 40 cms x 23 cms. *Est. £100 - £150.*

**552.** An unframed oil on canvas of a modernistic gent. Signed "F.B. 47", to bottom right corner. Inscribed verso in biro: "Heurig... Sigmund Freud". Pencil marks to verso top right corner inscribed, "FRANCIS BACON"..

**553.** BERNARD BUFFET: A French harbour scene. Signed and dated. Oil on canvas. Approx. 49 cms x 38 cms. Est. £30 - £50.

**554.** M F W GILBERT: "Views of The Exe from the Clyst." Oil on canvas. Approx. 74 cms x 50 cms. Est. £100 - £150.

**555.** A French framed and glazed print of ladies at the seaside. Approx. 58 cms x 38 cms. Est. £30 - £50.

**556.** A portrait of a lady in red gown in gilt frame. Oil on canvas. Approx. 62 cms x 74 cms. Est. £30 - £50.

**557.** A gilt framed print of a woodland scene. Approx. 50 cms x 36 cms. Est. £20 - £30.

**558.** A maple framed oil of a path scene at dusk. Approx. 22 cms x 28 cms. Est. £40 - £60.

**559.** A large framed and glazed modernistic picture of a charcoal scene. Approx. 74 cms x 105 cms. Est. £30 - £60.

**560.** A framed and glazed Oriental silk tapestry of a bird of prey. Approx. 35 cms x 45 cms. Est. £20 - £30.

**561.** An attractive oval miniature on ivory of a lady with white dress and wavy hair in paste frame. Approx. 7 cms x 8.5 cms including frame. Est. £400 - £500.

**562.** An oval gold framed miniature of a gent with loop top. Approx. 6.5 cms x 5.2 cms including frame. Est. £350 - £400.

**563.** An oval gold framed miniature of a lady with hair back and gold loop top. Approx. 7 cms x 6 cms including frame. Est. £300 - £350.

**564.** An oval miniature on ivory of a lady in gold frame with hair back and loop top. Approx. 5 cms x 4.3 cms including frame. Est. £300 - £400.

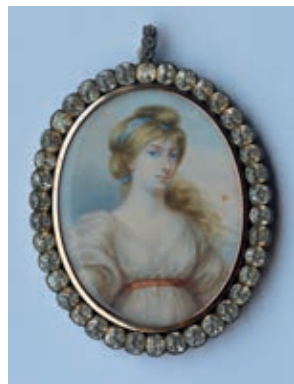
**565.** An Antique miniature of a gent mounted as a clasp in gold with concealed clasp. Approx. 4.5 cms x 3.7 cms including frame. Est. £300 - £400.

**566.** A finely painted miniature of a lady with black top in gilded border with maple frame. Approx. 10 cms x 13 cms NOT including frame. Est. £200 - £250.

**567.** A square miniature of a child with wavy hair in onyx frame. Approx. 7 cms x 9 cms NOT including frame. Est. £250 - £300.

**568.** A rectangular miniature of a lady with white bonnet and black outfit. Approx. 8 cms x 10 cms NOT including frame. Est. £250 - £300.

**569.** A rectangular silhouette of a dancing scene in gilt frame and leather travelling pouch. Approx. 12 cms x 9 cms. Est. £80 - £120.



561



## COLLECTABLES AND CHINA

---

**570.** A pair of MOP mounted opera glasses. *Est. £20 - £30.*

**571.** A small turquoise mounted hexagonal ring box with hinged top. *Est. £50 - £60.*

**572.** A tortoiseshell spectacle case with hinged top and panelled sides. *Est. £50 - £60.*

**573.** A 19th Century treen snuff box with tortoiseshell mounts. *Est. £50 - £60.*

**574.** An MOP fitted jewellery case with hinged top and steel thumb piece. *Est. £50 - £60.*

**575.** A travelling compass. By TG & Co Ltd. Contained within a leather box. *Est. £40 - £50.*

**576.** A Victorian Tunbridge ware snuff box with lift-off cover. *Est. £20 - £30.*

**577.** Two boxed pairs of travelling scissors within a leather case. *Est. £20 - £30.*

**578.** A good pair of cut steel Georgian buckles contained within a fitted box. *Est. £60 - £80.*

**579.** A small carved and inlaid Oriental ivory and MOP box. Signed to base. *Est. £30 - £50.*

**580.** A brass WWI comfort box complete with cigarettes and note. *Est. £20 - £30.*

**581.** A small bronzed statue of a hunting scene on rocky base. *Est. £20 - £30.*

**582.** A small cast bronze of a man with textured body and outstretched arms. *Est. £20 - £30.*

**583.** An unusual box mounted with numerous wax seal marks. *Est. £20 - £30.*

Lot 709



- 584.** A novelty tape measure in the form of an alligator in upright position. *Est. £15 - £20.*
- 585.** A good quality carved ivory figure of The Lucerne Lion. Approx. 9 cms x 4 cms. *Est. £300 - £400.*
- 586.** A small carved netsuke together with numerous other netsukes. *Est. £20 - £30.*
- 587.** A good quality ivory nécessaire with fitted interior and hinged top. *Est. £60 - £80.*
- 588.** A bag containing bonbon cases, pill boxes etc. *Est. £30 - £50.*
- 589.** A Tunbridge ware box together with a miser's purse etc. *Est. £30 - £40.*
- 590.** A bag containing numerous MOP panels and discs etc. *Est. £15 - £20.*
- 591.** A box containing carved bone items, MOP fruit knife etc. *Est. £15 - £20.*
- 592.** Four unusual unmounted lava cameos of high relief in case. *Est. £30 - £50.*
- 593.** A circular plaque of a lady's head in gilt frame. *Est. £30 - £50.*
- 594.** 35 oval intaglios displayed upon two wooden trays. *Est. £100 - £150.*
- 595.** 35 oval intaglios displayed upon two wooden trays. *Est. £100 - £150.*
- 596.** 35 oval intaglios displayed upon two wooden trays. *Est. £100 - £150.*
- 597.** A small child's microscope contained within a fitted box. *Est. £30 - £40.*
- 598.** An H Tinsley reflecting galvanometer contained within a fitted box. *Est. £80 - £100.*
- 599.** A Royal East African Automobile car badge together with an AA car badge and Bengal car badge. *Est. £30 - £50.*
- 600.** Three pieces of brass and copper trench art. *Est. £20 - £30.*
- 601.** Two World War II gas masks. *Est. £20 - £30.*
- 602.** An old Bush Bakelite radio. *Est. £30 - £50.*
- 603.** Two early pewter dome top tankards. *Est. £20 - £30.*
- 604.** An old World War II compass. *Est. £40 - £60.*
- 605.** Two stoneware water bottles with textured handles. *Est. £20 - 30.*
- 606.** A rare set of brass ball shaped weights contained within a fitted box and engraved "Burgh of Galashiels" to the larger examples. *Est. £200 - £300.*
- 607.** A carved ivory part chess set. *Est. £40 - £50.*
- 608.** An Oriental lacquer wall bracket. *Est. £20 - £30.*
- 609.** A small oval carved oak picture frame with ribbon top. *Est. £20 - £30.*
- 610.** A large heavy cast iron cul-de-sac sign. Approx. 57 cms long. *Est. £30 - £50.*
- 611.** OF RAILWAY INTEREST: An early engine plate number in cast iron, "73104". Approx. 82 cms long. *Est. £100 - £150.*
- 612.** A large oil lamp with green glass shade. *Est. £80 - £120.*
- 613.** An attractive inlaid ebony and satinwood writing slope with fitted interior. *Est. £50 - £60.*

- 614.** A large circular brass charger. *Est. £30 - £40.*
- 615.** A collection of old postcards. *Est. £20 - £30.*
- 616.** An old World War II warden's helmet. *Est. £10 - £15.*
- 617.** An unusual carving of a winged infant. *Est. £15 - £20.*
- 618.** A heavy brass bell. Signed "NFS". *Est. £30 - £40.*
- 619.** A carved Morocco cigarette box with ivory inlay decoration. *Est. £50 - £60.*
- 620.** A good carved ivory fan with feather mounts. *Est. £30 - £40.*
- 621.** A dome top glass fronted mantle clock with scroll decoration. *Est. £30 - £40.*
- 622.** A small oil on panel of ladies in woodlands. *Est. £30 - £40.*
- 623.** A old World War II Morse code machine. *Est. £20 - £30.*
- 624.** A pair of brass mounted wall sconces. *Est. £60 - £80.*
- 625.** An unusual heavy brass figure of a cowboy on leaping horse. *Est. £40 - £60.*
- 626.** An unusual set of four menu holders attractively decorated with flowers and birds. *Est. £20 - £30.*
- 627.** A good quality MOP and tortoiseshell inlaid dome top jewellery casket with fitted interior. *Est. £50 - £60.*
- 628.** An Antique photograph album with numerous photographs. *Est. £20 - £30.*
- 629.** A Continental opium pipe with inlaid decoration. *Est. £60 - £80.*
- 630.** Two magic lantern viewers. *Est. £30 - £40.*
- 631.** A stereoscope viewer complete with discs, book and history. *Est. £100 - £150.*
- 632.** An unusual rectangular tray inset with numerous butterflies. *Est. £60 - £80.*
- 633.** A small two handled tray mounted with eight butterflies. *Est. £40 - £60.*
- 634.** An attractive circular wall plate decorated with butterflies. *Est. £20 - £30.*
- 635.** A basket containing five various dolls. *Est. £30 - £40.*
- 636.** A good wooden mannequin with detachable limbs. *Est. £80 - £100.*
- 637.** An old painted wooden child's horse on wheels. *Est. £30 - £40.*
- 638.** An old well loved teddy bear with glass eyes. *Est. £30 - £40.*
- 639.** STEIFF: A stuffed elephant on trolley. *Est. £100 - £150.*
- 640.** A 1940's wire haired wolf terrier on trolley together with one other. *Est. £30 - £50.*
- 641.** An old teddy bear with glass eyes together with a stuffed donkey. *Est. £30 - £50.*
- 642.** An unusual wood effect cast iron small safe together with two keys. *Est. £20 - £30.*
- 643.** A carved and painted wooden ship's figurehead in the form of a woman. *Est. £500 - £600.*
- 644.** A pair of Staffordshire lions on textured base. *Est. £30 - £40.*

- 645.** A tall Staffordshire figure of a hunter and dogs. *Est. £20 - £30.*
- 646.** An attractively carved fan in glazed gilt case. *Est. £30 - £40.*
- 647.** A pair of spelter figures of warriors together with a spelter lion. *Est. £20 - £30.*
- 648.** Two floral decorated papier mâché trays. *Est. £30 - £40.*
- 649.** An attractively inlaid micro-mosaic domed top picture frame with floral decoration. Approx. 9 cms high. *Est. £80 - £120.*
- 650.** A small micro-mosaic domed top picture frame decorated with flowers. Approx. 8.5 cms high. *Est. £80 - £120.*
- 651.** A small rectangular micro-mosaic picture frame decorated with daisies in oval mount. Approx. 8 cms high. *Est. £80 - £120.*
- 652.** A small horseshoe shaped picture frame mounted with flowers and leaves. Approx. 9 cms high. *Est. £80 - £120.*
- 653.** A small square daisy mounted frame with canted corners. Approx. 7.5 cms high. *Est. £80 - £120.*
- 654.** A large attractive micro-mosaic frame in brass mount decorated with red flowers. Approx. 13 cms high. *Est. £80 - £120.*
- 655.** An unusual palette easel shaped picture frame in brass with daisy and other flower decoration. Approx. 13 cms high. *Est. £80 - £120.*
- 656.** A domed top and brass mounted micro-mosaic picture frame with oval panel. approx. 12 cms high. *Est. £80 - £120.*
- 657.** An attractive red floral decorated micro-mosaic frame. Approx. 13 cms high. *Est. £80 - £120.*
- 658. FLORA:** Two unusual terracotta busts of children's heads. Signed to base. Each approx. 20 cms high. *Est. £100 - £150.*
- 659. FLORA:** Two unusual terracotta busts of children's heads. Signed to base. Each approx. 20 cms high. *Est. £100 - £150.*
- 660.** An unusual carved South African tobacco box decorated with figures together with a stone figure. *Est. £30 - £50.*
- 661.** Two terracotta South African figures of hunters with textured bodies; one signed "Flora". *Est. £50 - £80.*
- 662.** A good heavy cast iron canon. Approx. 30 cms long. *Est. £50 - £80.*
- 663.** Two carved tribal wall hangings. *Est. £30 - £50.*
- 664.** Two rectangular Eastern seals together with a circular plaque and a silver ring. *Est. £30 - £40.*
- 665.** An unusual brass mounted and domed top tea caddy with fitted interior. *Est. £30 - £50.*
- 666.** A cast bronze figure of the Goddess Durga. *Est. £100 - £150.*
- 667.** An unusual carved wooden plaque of a lady and child. Approx. 30 cms high. *Est. £30 - £50.*
- 668.** A cast bronze figure of a warrior on horseback mounted upon a marble base. (Slight damage). *Est. £30 - £50.*
- 669.** An unusual Antique brass wall hanging on suspension chain. *Est. £30 - £50.*
- 670.** A large pair of brass and hardwood lamps of Eastern design. Approx. 57 cms high. *Est. £50 - £80.*

- 671.** A South African heavy brass collar together with a bangle. *Est. £30 - £50.*
- 672.** A pair of carved wooden figures of camels with textured bodies. *Est. £40 - £60.*
- 673.** A group of three carved wooden printing blocks with handles. *Est. £30 - £50.*
- 674.** A limited edition sculpture of a naked lady with wavy hair. Approx. 63 cms high. *Est. £80 - £120.*
- 675.** A figure of a naked lady with textured body in seated position. Approx. 25 cms high. *Est. £50 - £80.*
- 676.** A spelter figure of a lady in dancing position. *Est. £50 - £80.*
- 677.** A pair of tall carved painted door stops of South African design. Approx. 64 cms high. *Est. £50 - £80.*
- 678.** A tall carved stone column decorated with figures and children. Approx. 62 cms high. *Est. £100 - £150.*
- 679.** A good carved jade pendant with tassel drop. *Est. £100 - £150.*
- 680.** A large circular charger decorated with flowers and birds. Approx. 40 cms in diameter. *Est. £30 - £50.*
- 681.** An Antique Chinese interior painted glass lamp base mounted with figures. Approx. 45 cms high. *Est. £200 - £250.*
- 682.** A large blue and white charger decorated with flowers and leaves. *Est. £80 - £120.*
- 683.** A heavy Japanese brass jardiniere decorated with flowers and birds. *Est. £100 - £150.*
- 684.** An unusual carved belt mounted with Chinese scenes. *Est. £30 - £50.*
- 685.** A box containing numerous brass busts of various shapes, sizes and designs. *Est. £15 - £20.*
- 686.** Two sets of 19th Century Pali texts of Maha-satipatthana Sutta of the Digha-Nikaya, inscribed on palm leaves. *Est. £100 - £150.*
- 687.** A large Chinese wall charger decorated with dragons and clouds. Signed to base. (Damaged). Approx. 37 cms in diameter. *Est. £40 - £60.*
- 688.** A tall baluster shaped vase with lift-off cover. Signed to lid. (Damaged). Approx. 36 cms high. *Est. £50 - £80.*
- 689.** A group of five Antique blue and white wall plates. *Est. £30 - £50.*
- 690.** Two blue and white Chinese baluster shaped vases. Signed to bases. *Est. £40 - £60.*
- 691.** Two unusual fire stones. *Est. £20 - £30.*
- 692.** A set of six rice paper drawings of Oriental figures. *Est. £30 - £40.*
- 693.** A small carved ivory wall hanging of a fisherman together with a lady. Approx. 38 cms high. *Est. £30 - £40.*
- 694.** A good pair of large lacquered panels decorated with ivory figures in carved frames. Approx. 53 cms x 88 cms. *Est. £300 - £350.*
- 695.** A bag containing numerous unframed prints and watercolours. *Est. £30 - £50.*
- 696.** A Japanese cane miniature dolls' house. *Est. £20 - £30.*
- 697.** A tribal mask from Papua New Guinea together with one other. *Est. £50 - £80.*

- 698.** A spelter figure of an Egyptian tomb cat. Approx. 17 cms high. *Est. £30 - £50.*
- 699.** An oak carved barometer with scroll decoration. *Est. £50 - £80.*
- 700.** A small set of scales and weights together with a carved box. *Est. £15 - £20.*
- 701.** A large collection of old cigarette cards. *Est. £30 - £40.*
- 702.** A large folder containing postcards. *Est. £30 - £40.*
- 703.** An old Ever Ready torch together with two others. *Est. £10 - £15.*
- 704.** A pair of small brass lamps with cranberry shades. *Est. £50 - £80.*
- 705.** A pair of tall Masons vases with gilt tops. *Est. £30 - £40.*
- 706.** An unusual double spouted teapot. *Est. £20 - £30.*
- 707.** A good decorative and gilded vase. *Est. £30 - £40.*
- 708.** A Royal Doulton figure entitled, "Lunchtime". *Est. £30 - £40.*
- 709.** A stylish green glass vase with copper overlay and green stones. *Est. £60 - £80.*
- 710.** A tall pair of Royal Doulton vases with gilded decoration. *Est. £50 - £60.*
- 711.** A decorative Copeland figure of a child with wolf on textured base. (Slight damage). *Est. £30 - £50.*
- 712.** A pair of papier mâché urns of Oriental design. *Est. £40 - £60.*
- 713.** A good brass footman of typical design with brass handles. *Est. £100 - £150.*
- 714.** A good pair of large brass cream pails on domed bases. Approx. 51 cms in diameter. *Est. £60 - £80.*
- 715.** A box containing locomotive engines and carriages. *Est. £40 - £60.*
- 716.** An enamel bread bin with red handles and lift-off enamel cover. *Est. £20 - £30.*
- 717.** A stylish coffee set designed with scrolls and flowers. *Est. £10 - £20.*
- 718.** A pair of cloisonné candlesticks together with a matching pin dish. *Est. £40 - £50.*
- 719.** An unusual black Russian model of a naked lady. *Est. £20 - £30.*
- 720.** A good carved wooden paper knife shaped as an Oriental man. *Est. £20 - £30.*
- 721.** A pair of tall decorated lustre vases. Approx. 25 cms tall. *Est. £25 - £35.*
- 722.** A pair of Antique glass ewers with gilded rims. *Est. £30 - £40.*
- 723.** An Antique glass sweet dish with fold over top. *Est. £30 - £40.*
- 724.** A attractively etched lemonade set decorated with African animals on canted base. *Est. £30 - £50.*
- 725.** A group of five cut glass decanters. *Est. £20 - £30.*
- 726.** WATERFORD CRYSTAL: An early reeded glass fruit bowl. Approx. 23 cms in diameter. *Est. £30 - £40.*

**727.** WMF: A stylish fruit basket with green glass liner on flat base. Approx. 22 cms across. Est. £30 - £40.

**728.** A stylish vaseline glass bowl decorated with flowers and leaves. Approx. 28 cms in diameter. Est. £50 - £80.

**729.** LALIQUE: A scent bottle of rectangular form etched with a lady with ball stopper. Signed to base. Est. £30 - £40.

**730.** WEDGWOOD: A good Malabar Pattern coffee service with gilded decoration. Est. £40 - £60.

**731.** A good pair of tall cut glass vases on square bases with tapering supports. Approx. 34 cms high. Est. £100 - £150.

**732.** An etched glass barrel with lift-off cover. Approx. 30 cms high. Est. £30 - £40.

**733.** NORMAN UNDERHILL : A figure of a fisherman seated on a bench with a fish, on oval base. Est. £30 - £50.

**734.** A blue and white meat drainer. Approx. 33 cms across. Est. £40 - £60.

**735.** A tall opaque glass vase of trees and flowers. Approx. 25 cms tall. Est. £50 - £60.

**736.** A Royal Doulton silver mounted three piece coffee set. Est. £30 - £40.

**737.** An early glass lustre lamp decorated with fish. (Cracked). Est. £30 - £40.

**738.** A large centrepiece mounted with cherubs and ball decoration. Approx. 57 cms high. Est. £50 - £80.

**739.** A stylish centrepiece mounted with infants and fruit. Approx. 26 cms high. Est. £40 - £60.

**740.** A pair of decorative figures of dancers with floral clothes on gilded bases. Est. £50 - £80.

**741.** An early English pottery bowl with blue glazing. Approx. 18 cms in diameter. Est. £150 - £200.

**742.** A Chinese pint mug decorated with figures and flowers. Approx. 13 cms high. Est. £50 - £80.

**743.** An early English baluster shaped coffee pot decorated with flowers and figures. Approx. 23 cms high. Est. £100 - £150.

**744.** A pair of early English blue and white sauce boats on pedestal bases. Est. £200 - £250.

**745.** SPODE: A massive kettle and lid with blue and white flowers. Approx. 31 cms high. Est. £80 - £120.

**746.** An unusual Devon Pottery jug with flower decoration. Approx. 18 cms tall. Est. £20 - £30.

**747.** LLADRO: A large figure of a lady's head with wavy hair. Approx. 37 cms high. Est. £150 - £200.

**748.** A Dresden style centrepiece attractively decorated with semi-naked ladies and flower border. Est. £100 - £150.

**749.** COPELAND: A massive figure of a child clutching a dog with swept back hair. Approx. 46 cms high. Est. £150 - £200.

**750.** A small English pearl ware coffee cup with blue ground decoration. Approx. 7 cms high. Est. £100 - £150.

**751.** Two early Copeland baby feeders. Est. £30 - £50.

**752.** A cased Olympus camera together with lenses. Est. £80 - £120.



**753.** A good slide machine together with numerous magic lantern slides, religious slides, Indian slides, Chinese slides and Japanese slides. *Est. £150 - £250.*

**754.** A good model pond yacht in the form of a junk, fully rigged on wooden base. *Est. £100 - £150.*

**755.** No Lot.

**756.** No Lot

**757.** NAD: A stereo turntable. Numbered 5120. *Est. £30 - £50.*

**758.** NAD: A pair of massive Wharfedale speakers measuring approx. 99 cms tall. *Est. £300 - £400.*

**759.** GARRARD: An unusual vintage record deck contained within a wooden box. Model 301. *Est. £300 - £400.*

**760.** A large painted dolls' house. *Est. £50 - £80.*

THE FOLLOWING LOTS 761 – 792, ARE BEING SOLD ON BEHALF OF THE RNLI WITHOUT RESERVE:

**761.** An attractive Royal Worcester pot pourri with gilding, flowers and lift-off cover. Numbered 84822. Approx. 29 cms high. *Est. £150 - £200.*

**762.** An attractive Coalport baluster shaped vase with gilded decoration and moorland scene. Approx. 15 cms high. *Est. £80 - £120.*

**763.** An attractive Royal Worcester dish of shell design mounted with a serpent. *Est. £30 - £50.*

**764.** A small bonbon dish in the form of a shell with floral decoration, together with a similar smaller example and a vase. *Est. £30 - £50.*

**765.** A Royal Doulton vase decorated with Pembroke Castle. Signed S H Plant. Approx. 23 cms high. *Est. £100 - £150.*

**766.** A small Royal Worcester jardiniere decorated with flowers, leaves and gold bead work. Approx. 8.5 cms high. *Est. £30 - £50.*

**767.** An attractive ewer / vase with lobed sides and scroll decoration. Approx. 20 cms high. (Slight damage). *Est. £30 - £50.*

**768.** A pair of blue and white vases with gold decoration. By Locke & Co. Worcester. Approx. 14 cms high. *Est. £30 - £50.*

**769.** A small Royal Worcester vase decorated with flowers and leaves with pierced decoration. Approx. 18 cms high. *Est. £40 - £50.*

**770.** GRAINGER & CO: An attractive pierced vase and cover with green and coral bead work and gilded decoration. Approx. 20 cms high. *Est. £60 - £80.*

**771.** A pair of blue and white gilded vases of baluster form and pierced decoration, with lift-off cover. Approx. 18 cms high. *Est. £80 - £120.*

**772.** A Royal Worcester decorated cup and saucer with pierced decoration. *Est. £60 - £80.*

**773.** A tall Royal Worcester vase decorated with flowers and roses together with a matching ewer and cover. *Est. £50 - £80.*

**774.** A Royal Crown Derby vase and cover decorated with birds and flowers on a yellow background. Approx. 17 cms high. *Est. £50 - £80.*

**775.** A Royal Crown Derby basket decorated with birds, flowers and gilt work. (Cracked). *Est. £30 - £50.*

**776.** GRAINGER & CO: A pot pourri with scroll decoration on hairy feet. Signed to base. Est. £100 - £150.

**777.** A Royal Worcester baluster shaped vase with gilded handle. Numbered 2160. Approx. 22 cms high. Est. £100 - £150.

**778.** GRAINGER & CO: A small square inkwell decorated with flowers, leaves and gilding. Approx. 10 cms in diameter. Est. £40 - £60.

**779.** A Royal Worcester ewer with gilded decoration. Numbered 1587 to base. (Slight damage). Approx. 23 cms high. Est. £20 - £30.

**780.** A floral Royal Worcester ewer with gilt handle. (Slight damage). Approx. 23 cms high. Est. £30 - £50.

**781.** A Royal Worcester pin dish attractively decorated with a flying duck. Signed Stinton. Numbered 2769. Approx. 10.5 cms in diameter. Est. £50 - £80.

**782.** A circular wall plate of shepherd herding sheep with gilt rim. Signed to back and base: Offenham. Approx. 27 cms in diameter. Est. £80 - £120.

**783.** A Royal Worcester plate decorated with a cottage scene and gilt rim. Signed R. Rushton. Approx. 27 cms in diameter. Est. £80 - £120.

**784.** A blue ground baluster shaped vase and cover gilded with flowers and leaves with lift-off cover. Approx. 30 cms high. Est. £80 - £100.

**785.** A large attractively painted Royal Worcester vase and cover decorated with flying blue tits. Approx. 37 cms high. Est. £150 - £200.

**786.** A stylish Continental figure of a girl with red dress and floral trim talking to three geese. Approx. 34 cms high. Est. £100 - £150.

**787.** A Royal Worcester urn shaped jug with textured handle. Approx. 18 cms high. Est. £80 - £120.

**788.** A pair of Royal Worcester decorated ewers with gilded handles. (Slight damage). Approx. 16 cms high. Est. £30 - £50.

**789.** A Belleek finely made bonbon dish with flowers and weave work decoration. Est. £50 - £80.

**790.** A large Belleek dome shaped sweet dish with flowers and leaves. Approx. 23 cms across. Est. £80 - £120.

**791.** A Minton dressing table jar attractively painted with infants and church. Inscribed to base: "Paris Exhibition 1878". Approx. 26 cms x 18 cms. Est. £100 - £150.

**792.** A good set of five graduating sized Royal Worcester ewers painted with flowers, leaves and gilded handles. Est. £350 - £450.

**793.** No Lot.

**794.** A taxidermy figure of a Kingfisher in glass domed case. Est. £30 - £50.

**795.** A cased cabinet of four taxidermy river birds. Est. £50 - £80.

**796.** A pair of taxidermy birds, possibly snipes, with painted river scene backing in glass case. Est. £70 - £90.

**797.** A good figure of a taxidermy river bird, possibly a stone curlew, together with one other, possibly a snipe, in dome glass case. Est. £150 - £200.

- 798.** A pair of glass domes mounted with a porcelain doll and shell rim. *Est. £70 - £90.*
- 799.** A taxidermy mounted fox head on oak shield back. *Est. £30 - £50.*
- 800.** A taxidermy mounted fox head on oak shield back. *Est. £30 - £50.*
- 801.** A taxidermy figure of a cockerel mounted on rugged base. *Est. £50 - £80.*
- 802.** A good pair of antlers mounted on an oak shield. *Est. £150 - £200.*
- 803.** A good pair of antlers mounted on an oak shield. *Est. £150 - £200.*
- 804.** DAVID COOK: A large life size figure of an iguana. Approx. 50 cms high. *Est. £400 - £600.*
- 805.** An Antique oak wall clock bracket carved with a bearded head. *Est. £30 - £50.*
- 806.** A large butler's bell box in wooden frame constructed for seven bedrooms. Approx. 48 cms x 48 cms. *Est. £200 - £300.*
- 807.** An oval mahogany shell inlaid tray. *Est. £30 - £40.*
- 808.** A signed Everlast boxing glove autographed by Evander Holyfield, together with a certificate of authenticity in display case with photographs. *Est. £250 - £300.*
- 809.** A Lonsdale boxing glove autographed by "Marvellous" Marvin Hagler, together with a certificate of authenticity in display case together with photographs. *Est. £250 - £300.*
- 810.** An Everlast boxing glove autographed by "Sugar Ray" Leonard, together with a certificate of authenticity in display case together with photographs. *Est. £250 - £300.*
- 811.** An Everlast boxing glove autographed by Larry Holmes, together with a certificate of authenticity in display case together with photographs. *Est. £250 - £300.*
- 812.** CORGI: Three boxes of die-cast model aeroplanes, numbered AA32803, AA32101, and AA35706. *Est. £30 - £50.*
- 813.** CORGI: Three boxes of die-cast model aeroplanes, numbered AA32802, AA33102, and AA32204. *Est. £30 - £50.*
- 814.** CORGI: Three boxes of die-cast model aeroplanes, numbered AA49001, AA31908, and AA32502. *Est. £30 - £50.*
- 815.** CORGI: A boxed "World War II Defenders of Malta" die-cast model aeroplane, numbered AA34804. *Est. £40 - £60.*
- 816.** CORGI: A boxed "World War II War in the Pacific" die-cast model aeroplanes, numbered AA99120. *Est. £40 - £60.*
- 817.** CORGI: A boxed "World War II Bombers on the Horizon" die-cast model aeroplane, numbered AA32608. *Est. £40 - £60.*
- 818.** CORGI: A boxed "World War II Bombers on the Horizon" die-cast model aeroplane, numbered AA34601. *Est. £40 - £60.*
- 819.** CORGI: Four boxes of die-cast model aeroplanes, numbered AA32503, AA33103, AA31902, and AA31903. *Est. £30 - £50.*
- 820.** CORGI: Three boxes of die-cast model aeroplanes, numbered AA32501, AA33003, and AA33802. *Est. £30 - £50.*
- 821.** CORGI: Two boxes of die-cast model aeroplanes, entitled "World War II Europe and Africa" numbered AA33701, and AA33702. *Est. £40 - £60.*

**822.** CORGI: Two boxes of die-cast model jets, "Military Air Power, entitled Thunder in The Skies", numbered AA33602, and AA33605. *Est. £40 - £60.*

**823.** CORGI: Two boxes of die-cast model aeroplanes, "Military Air Power", numbered AA31301, and AA48701. *Est. £40 - £60.*

**824.** CORGI: Three boxes of die-cast model aeroplanes, the first entitled, "D-Day", numbered AA32007; also "Flying Aces", numbered AA49203, and "World War II Fleet Air Arm", numbered, AA36202. *Est. £30 - £50.*

**825.** CORGI: A boxed die-cast model helicopter, entitled, "Military Air Power", numbered AA33402. *Est. £30 - £50.*

**826.** CORGI: Two boxes of die-cast model aeroplanes, entitled, "World War II", numbered AA33806, and AA31906. *Est. £30 - £50.*

**827.** CORGI: Three boxes of die-cast model aeroplanes, entitled, "World War II", numbered AA30701, AA34301 and AA32103. *Est. £30 - £50.*

**828.** CORGI: Two boxes of die-cast model aeroplanes, entitled, "World War II Military Air Power", numbered AA34202, and AA48403. *Est. £30 - £50.*

**829.** CORGI: Three boxes of die-cast model aeroplanes, entitled, "World War II", numbered AA33004, AA34306 and AA36301. *Est. £30 - £50.*

**830.** CORGI: A boxed die-cast model aeroplane, entitled, "World War II, Early War", numbered AA36101. *Est. £30 - £50.*

**831.** CORGI: A boxed die-cast model aeroplane, entitled, "World War II, War in the Pacific", numbered AA34401. *Est. £30 - £50.*

**832.** CORGI: A boxed die-cast model aeroplane, entitled, "World War II, Europe and Africa", numbered AA33301. *Est. £30 - £50.*

**833.** CORGI: A boxed die-cast model aeroplane, entitled, "World War II, War in the Pacific", numbered AA34001. *Est. £30 - £50.*

**834.** CORGI: A boxed die-cast model aeroplane, entitled, "Avro Lancaster B.1", numbered AA32603. *Est. £40 - £60.*

**835.** CORGI: Three boxes of die-cast model aeroplanes, entitled, "World War II", numbered AA33801, AA36302, and AA30003. *Est. £30 - £50.*

**836.** CORGI: A boxed die-cast model aeroplane, entitled, "Falklands 20th Anniversary, Vulcan Bomber", numbered AA31202. *Est. £30 - £50.*

**837.** CORGI: Three boxes of die-cast model aeroplanes, numbered AA49201, AA32203, and AA32102. *Est. £30 - £50.*

**838.** CORGI: Two boxes of die-cast model aeroplanes, entitled, "World War II, Battle for the Low Countries" and "Airlines of the World", numbered AA36602, and AA31702. *Est. £30 - £50.*

**839.** CORGI: Three boxes of die-cast model aeroplanes, entitled, "World War II", numbered AA34302, AA36501, and AA49301. *Est. £30 - £50.*

**840.** CORGI: Three boxes of die-cast model aeroplanes, entitled, "World War II", numbered AA49104, AA31910, and AA32808. *Est. £30 - £50.*

**841.** CORGI: Three limited edition boxed die-cast model aeroplanes, numbered AA36703, AA36805, and AA37801. *Est. £40 - £60.*

- 842.** CORGI: Two boxed die-cast model Military aircraft, numbered AA31803, and AA48204. *Est. £30 - £50.*
- 843.** CORGI: A boxed die-cast model aeroplane, entitled, "Unsung Heroes", numbered AA33502. *Est. £40 - £60.*
- 844.** CORGI: A boxed die-cast model aeroplane, entitled, "World War II, The End of the War in Europe", numbered AA34905. *Est. £40 - £60.*
- 845.** NORREYS: A pair of purple suede leather shoes with black patent base and high heel together with another similar pair in black suede made by Norreys of Fulham Road, London. Both size 40, previously worn and in original boxes with one pair of detachable inter-changeable colourful paste clips. *Est. £30 - £50.*
- 846.** A yellow ground Medieval style costume, labelled to interior, "Royal Opera House". *Est. £30 - £40.*
- 847.** A yellow ground Medieval style gown with blue lining, labelled to interior, "Royal Opera House". *Est. £30 - £40.*
- 848.** A red ground Medieval style gown with white lining. *Est. £30 - £40.*
- 849.** A pink Medieval style outfit together with an orange gown and shawl. *Est. £30 - £40.*
- 850.** A suitcase containing silk shawl, fancy dress outfits etc. *Est. £30 - £50.*
- 851.** A suitcase containing silk shawl, fancy dress etc. *Est. £30 - £50.*
- 852.** PROPERTY OF A LADY OF TITLE: A handmade Russian lace wedding dress together with matching head dress inset with numerous gem stones. *Est. £200 - £300.*
- 853.** A good set of lined red ground curtains. *Est. £40 - £60.*
- 854.** OF MOTOR RACING INTEREST: A collection of vintage motor cycling and steam rally badges *Est. £30 - £40.*
- 855.** A large quantity of motor cycle rally badges and stickers. *Est. £20 - £30.*
- 856.** A quantity of old motor cycling trophies etc. *Est. £30 - £40.*
- 857.** A quantity of old motor cycling trophies and cups. *Est. £30 - £40.*
- 858.** A large good quality silk rug with blue patterned decoration and tassel edges. Approx. 3 m x 2.2 m. *Est. £500 - £600.*
- 859.** A colourful Eastern floral rug with red ground medallion. Approx. 2 m x 1.4 m. *Est. £30 - £50.*
- 860.** A large Eastern rug with red ground centre and tassel ends. *Est. £30 - £50.*
- 861.** A large red ground rug with blue medallion. Approx. 2.3 m x 1.35 m. *Est. £40 - £60.*
- 862.** A large Eastern red ground carpet with ivory background and tassel ends. *Est. £60 - £80.*
- 863.** A large patterned carpet. *Est. £80 - £100.*
- 864.** A large patterned carpet. *Est. £80 - £100.*
- 865.** A large patterned carpet. *Est. £80 - £100.*
- 866.** An attractively decorated sewing box with lift-off cover and MOP decoration. *Est. £100 - £150.*
- 867.** A set of three whiskey barrels decorated with flowers and birds. *Est. £30 - £40.*

**868.** An impressive large Majolica jardiniere on stand. (Cracked). *Est. £40 - £60.*

**869.** CORGI: A boxed die-cast model of an aeroplane, entitled, "Avro Lancaster B.1", numbered AA32601. *Est. £30 - £40.*

**870.** A Royal Crown Derby Olde Avesbury jug, numbered LIII, together with a matching fruit bowl, numbered LII. *Est. £30 - £40.*

**871.** A Royal Crown Derby paperweight in the form of a woodpecker together with a dove. *Est. £30 - £40.*

**872.** A Royal Crown Derby old Imari gilded vase with floral decoration, numbered 1128, together with one other, numbered 1128 *Est. £30 - £50.*

**873.** A set of three Royal Crown Derby Imari pattern table plates with gilt decoration, numbered 1128. *Est. £80 - £120.*

**874.** Two attractive Royal Crown Derby gilded pin dishes, numbered 1128, together with one other, numbered 2451. *Est. £30 - £50.*

**875.** An attractive oval Royal Crown Derby sweet dish, together with one other, both numbered 1128. *Est. £30 - £50.*

**876.** A Royal Crown Derby gilt serving dish, numbered 9021, together with a small box, numbered 1298. *Est. £30 - £50.*

**877.** A collection of porcelain reference books. *Est. £20 - £30.*

**878.** An early English blue and white cream jug with hunting scene and pheasants. *Est. £60 - £80.*

**879.** An attractive porcelain wall bracket with winged infant and flowers. Marked to base. *Est. £50 - £80.*

**880.** A group of six Continental figures decorated with flowers. *Est. £25 - £35.*

**881.** An attractive Meissen figure of ladies with winged infants decorated with flowers. Approx. 24 cms high. *Est. £200 - £300.*

**882.** A Royal Doulton figure of a lady, wearing a red dress. *Est. £20 - £30.*

**883.** A pair of Continental figures of grape pickers on gilded base. *Est. £30 - £50.*

**884.** A figure of a lady with wavy hair. *Est. £20 - £30.*

**885.** A pair of Continental figures with floral decoration. *Est. £30 - £50.*

**886.** An 18th Century Continental candelabra of a semi-naked lady with grapes. *Est. £40 - £60.*

**887.** A pair of Continental figures attractively decorated with flowers and gilding. *Est. £50 - £80.*

**888.** A pair of Continental green decorated figures mounted with sheep. *Est. £30 - £50.*

**889.** A pair of small fine porcelain dolls mounted with dresses and bonnet tops. *Est. £30 - £50.*

**890.** A 19th Century two handled bronze urn with brass cup liner decorated in relief on pink marble and slate base. *Est. £150 - £200.*

**891.** OF PHILATELIC INTEREST: The Queen's Silver Jubilee - Stamps of Royalty Collection. Silver stamps contained within a fitted box, together with certificate of authenticity. Approx. 464 grams. *Est. £180 - £220.*

THERE WILL NOW BE A 10 MINUTE BREAK



637



758



785



654, 656 & 655



761



666



797



765



747



832



770 & 771





Lot 905

## FURNITURE

---

**900.** SHAPLAND & PETER OF BARNSTAPLE: A good quality oak dresser with panelled doors and drawers on stretcher base. *Est. £500 - £600.*

**901.** An impressive mahogany three door bookcase with panelled doors and pedestal base. *Est. £200 - £250.*

**902.** A good Victorian mahogany linen press with panelled doors and three drawers to base. *Est. £100 - £150.*

**903.** A large mahogany carver chair with upholstered back. *Est. £50 - £80.*

**904.** A pair of oak shield back hall chairs. *Est. £30 - £40.*

**905.** A Victorian button back armchair on cabriole legs. *Est. £100 - £150.*

**906.** A bow back chair with turned spindles. *Est. £50 - £80.*

**907.** A small circular pine cricket table. *Est. £80 - £120.*

**908.** A walnut and brass bound planter on four spay supports. *Est. £30 - £50.*

**909.** A mahogany tapestry topped piano stool with carved decoration. *Est. £50 - £80.*

**910.** A rosewood piano stool with swivel top. *Est. £50 - £80.*

**911.** An unusual modern brass mounted globe. *Est. £30 - £50.*

**912.** A large pine rocking chair with red upholstered decoration. *Est. £20 - £30.*

- 913.** A large button back leather armchair on splayed supports. *Est. £60 - £80.*
- 914.** A large button back leather armchair together with a matching stool. *Est. £80 - £120.*
- 915.** A good Georgian mahogany chest of five drawers with brushing slide and bracket feet. Approx. 84 cms x 80 cms x 51 cms. *Est. £600 - £800.*
- 916.** A good late Victorian inlaid bureau on bracket feet and fall front. *Est. £60 - £80.*
- 917.** A good stripped pine chest of five drawers on pedestal base. *Est. £100 - £150.*
- 918.** No Lot.
- 919.** A large Georgian twin pedestal desk on bracket feet. *Est. £80 - £120.*
- 920.** A tall heavy brass and copper mounted oil lamp with etched glass shade. *Est. £80 - £120.*
- 921.** A large Edwardian three door bookcase on bracket feet with bevelled glass. *Est. £80 - £100.*
- 922.** A Georgian style armchair with fleur-de-lys decoration on turned supports. *Est. £80 - £100.*
- 923.** An unusual oak Globe Wernicke style five storey filing cupboard. *Est. £50 - £80.*
- 924.** A good oak Georgian style refectory table on turned supports with plank top. Approx. 210 cms x 94 cms. *Est. £500 - £600.*
- 925.** A massive oak Georgian style refectory table on turned supports with plank top. Approx. 122 cms x 240 cms. Accompanied with four oak carver chairs with cane seats and eight dining chairs. *Est. £800 - £1200.*
- 926.** No Lot.
- 927.** No Lot.
- 928.** No Lot.
- 929.** A good mahogany twin pedestal writing desk with leatherette top on pedestal base. *Est. £100 - £150.*
- 930.** A good Victorian bow front chest of five drawers on fluted columns. *Est. £80 - £120.*
- 931.** A good oak tambour front bookcase with fitted interior. *Est. £150 - £200.*
- 932.** A small oak kitchen dresser with fluted supports. *Est. £50 - £80.*
- 933.** A large Victorian mahogany glazed bookcase with dental frieze and panelled base. *Est. £150 - £200.*
- 934.** A massive painted pine dresser with cupboards to base and glazed top. Approx 185 cms x 240 cms x 147 cms. *Est. £200 - £250.*
- 935.** An impressive mahogany twin pedestal sideboard mounted with scrolls and flowers. *Est. £150 - £200.*
- 936.** A good Continental mahogany secretaire chest, the dummy drawer opening to fitted interior on turned supports. *Est. £200 - £300.*
- 937.** An oak revolving office chair with leather inset top. *Est. £40 - £60.*
- 938.** A miniature tilt top two door side table on tapering supports. *Est. £60 - £80.*
- 939.** A small oak spindle back settee with wavy edge. *Est. £50 - £80.*
- 940.** An oak carved Continental table decorated with flowers and leaves. *Est. £30 - £50.*

- 941.** A Continental lacquered trunk with brass handles and hinged top. *Est. £60 - £80.*
- 942.** A small pine commode with hinged top. *Est. £30 - £40.*
- 943.** An unusual mahogany serving table with hinged top on tapered supports. *Est. £100 - £150.*
- 944.** A pair of Edwardian nursing chairs with scroll mounts. *Est. £30 - £40.*
- 945.** A pair of barley twist carver chairs together with four dining chairs. *Est. £40 - £60.*
- 946.** A good reproduction pembroke table on tapering supports. *Est. £40 - £60.*
- 947.** A Georgian three drawer mahogany bureau on bracket feet. *Est. £100 - £150.*
- 948.** A Continental twin pedestal desk on turned supports with leather inset. *Est. £100 - £150.*
- 949.** No Lot.
- 950.** A good painted elm dresser base with three drawers and two doors. *Est. £200 - £250.*
- 951.** A small pine chest of five drawers on pedestal base. *Est. £60 - £80.*
- 952.** A pine chest of three drawers on turned supports. *Est. £50 - £80.*
- 953.** A mahogany desk with fitted interior and drawers to base on turned tapering supports. *Est. £80 - £120.*
- 954.** BRIGHTS OF NETTLEBED: A Georgian style mahogany twin pedestal table with reeded supports. *Est. £60 - £80.*
- 955.** A mahogany chest of four drawers on bracket feet with brass handles. *Est. £100 - £150.*
- 956.** An early oak plank top coffer with carved decoration and panelled sides. *Est. £100 - £150.*
- 957.** A good Continental trunk with brass mounts. *Est. £80 - £120.*
- 958.** A mahogany dressing mirror with reeded decoration. *Est. £200 - £250.*
- 959.** A massive pitched pine chest of five drawers with heavy brass handles. *Est. £150 - £200.*
- 960.** An unusual mahogany box with sliding top and flush handles. *Est. £30 - £40.*
- 961.** A pair of tall dining chairs with cane seats in the style of McIntosh. *Est. £80 - £120.*
- 962.** ERCOL: An oval beech drop leaf dining table of typical design. *Est. £50 - £60.*
- 963.** ERCOL: An oval beech drop leaf dining table of typical design. *Est. £50 - £60.*
- 964.** ERCOL: An occasional table on four sweeping supports. *Est. £50 - £80.*
- 965.** An unusual child's double school desk on metal frame. *Est. £50 - £80.*
- 966.** A set of early Georgian style chairs with barley twist supports. *Est. £60 - £80.*
- 967.** An early oak dining chair with carved figures. *Est. £20 - £30.*
- 968.** A good set of eight plus two mahogany dining chairs with carved mounts and turned supports. *Est. £100 - £150.*
- 969.** A large mahogany extending table on carved bulbous supports with three extra leaves. Total length approx. 3.60 m. *Est. £400 - £600.*

- 970.** An early Georgian oak drop leaf table with single drawer and tapering supports. *Est. £50 - £80.*
- 971.** A small pot cupboard on pedestal base with shelved interior. *Est. £30 - £50.*
- 972.** A carved Edwardian satinwood bedside chest decorated with flowers. *Est. £30 - £50.*
- 973.** A heavy oak chest of four drawers with lion mask handles and fall front. *Est. £100 - £150.*
- 974.** A pair of upholstered armchairs with tapestry backs. *est. £20 - £30.*
- 975.** A large twin pedestal mahogany sideboard on pedestal base. *Est. £100 - £150.*
- 976.** An Antique oak single door corner cupboard with fitted interior and shell inlay. *Est. £50 - £80.*
- 977.** A retro painted kitchen unit with glass doors, fall front and red plastic handles. *Est. £50 - £80.*
- 978.** A late Victorian mahogany twin pedestal desk with turned handles. *Est. £100 - £150.*
- 979.** A metamorphic set of shelves / table on stretcher base. *Est. £100 - £150.*
- 980.** A white painted pine kitchen bookcase with two drawers to base. *Est. £80 - £120.*
- 981.** A mahogany break front sideboard with mirrored back. *Est. £100 - £150.*
- 982.** An Edwardian inlaid compactum wardrobe on pedestal base. *Est. £100 - £150.*
- 983.** A good oak two piece kitchen dresser with panelled sides. *Est. £100 - £150.*
- 984.** GLOBE WERNICKE: An unusual mahogany clerk's desk with eighteen drawers and cupboard to base. *Est. £200 - £300.*
- 985.** No Lot.
- 986.** A large North Country mahogany grandfather clock with painted dial and string inlay. By John Oldfield of Manchester. *Est. £100 - £150.*
- 987.** An oak and mahogany cased grandfather clock, the dial painted with flowers and leaves. *Est. £100 - £150.*
- 988.** A mahogany cased small grandfather clock with brass dial. By Bayley and Street of Bridgwater. *Est. £100 - £150.*
- 989.** OF LOCAL HONITON INTEREST: A mahogany cased grandfather clock with brass dial. By John Murch of Honiton. *Est. £100 - £150.*
- 990.** A tall oak cased grandfather clock with brass dial. By W Huggin of Ashwell Thorp. *Est. £100 - £150.*



903



934



956



959



907



936



962



915



958



964



925



969



## TERMS AND CONDITIONS OF SALE

Whittons carries on business with bidders, buyers and all those present in the auction room prior to or in connection with a sale on the following general conditions and on such other terms, conditions and notices as may be referred to herein.

### 1. BIDDING PROCEDURES AND THE BUYER

**a)** Bidders are required to register their particulars prior to bidding and to satisfy any security arrangements before entering the auction room to view or bid. We do not accept bids from any person who has not completed and delivered to us one of our Bidding Forms. You will be asked for photographic proof of identity, residence and references. Bids will not be accepted if you fail to provide sufficient identification when asked to produce it. We may also ask for a deposit to be paid prior to bidding. We may refuse entry to a Sale to any person even if that person has completed a Bidding Form.

**b)** The maker of the highest bid accepted by the Auctioneer conducting the sale shall be the buyer at the hammer price and any dispute regarding a bid shall be made and settled at the Auctioneer's absolute discretion, and may reoffer the Lot during the course of the auction or otherwise. The Auctioneer shall act reasonably in exercising this discretion. The Auctioneer's decision is final.

**c)** Bidders shall be deemed to act as principals.

**d)** Once made no bid can be withdrawn.

**e)** Our right to bid on behalf of the seller is expressly reserved up to the amount of any reserve and the right to refuse any bid is also reserved.

### 2. INCREMENTS

**a)** Bidding increments shall be at the Auctioneer's sole discretion.

### 3. THE PURCHASE PRICE

**a)** The buyer shall pay the Hammer Price together with a premium thereon of 18% plus VAT on the premium at the rate imposed by law on all lots. Lots purchased online will incur an additional charge in the sum of 3% of the Hammer Price plus VAT at the rate imposed by law.

### 4. VALUE ADDED TAX

**a)** Where a lot is marked with an asterisk (\*), VAT will be payable at the standard rate as imposed by law on the Hammer Price as well as being added to the buyer's premium.

**b)** Where a lot is marked with a double asterisk (\*\*), VAT will be charged at a reduced VAT rate (currently 5%) to the gross price of that lot being the Hammer Price plus the buyer's premium.

**c)** Where no asterisk is marked against a lot, no VAT is payable on the Hammer Price, and is deemed to have been sold under the Auctioneer's Margin Scheme. VAT included within the premium is not recoverable as input tax.

### 5. PAYMENT

**a)** Your obligation to pay for a lot occurs when the Auctioneer's hammer has fallen in respect of the lot.

**b)** Immediately a lot is sold you will give to us, if requested, proof of identity and pay to us the total amount due in cash or in such other way as agreed by us. Any payments by

you to us may be applied by us towards any sums owing from you to us on any account whatever without regard to any directions of you or your agent, whether express or implied.

**c)** No cash payments will be accepted over £6000.00 (Six Thousand Pounds Sterling).

**d)** Payment is acceptable in cash, credit or debit card. A handling charge of 2% will be added to all purchases made by credit card. Payments made by debit card will incur no extra charge. Payment can be made by direct bank transfer into our bank account.

**e)** Payment of the purchase price and all other sums payable by you to Whittons must be made in the currency in which the sale was conducted within seven working days following the sale. Payment must be received in cleared funds by the seventh working day following the sale. Failure to provide cleared funds within this time may result in remedies being exercised as stated in condition 7.

### 6. TITLE AND COLLECTION OF PURCHASES

**a)** Ownership of the lots purchased shall not pass to the buyer until payment has been made in full to us of the total amount due, to include all premiums, charges and postal costs where applicable, and received in cleared funds by Whittons.

**b)** Responsibility of the lot passes to the buyer at the fall of the Auctioneer's hammer. The seller will no longer be responsible for the lot thereafter. The buyer will indemnify the seller and keep the seller fully indemnified from and against all claims, proceedings, costs, expenses and losses arising in respect of any injury, loss and damage caused to the lot after the fall of the Auctioneer's hammer until the buyer obtains full title to it.

**c)** You shall, at your own risk and expense take away any lots that you have purchased and paid for in full, not later than seven working days following the sale or upon the clearance of any cheque used for payment after which you shall be responsible for any removal, storage and insurance charges. No purchase can be claimed or removed until it has been paid for in full.

**d)** Title to the lot remains in and is retained by the seller until payment has been made in full to us of the total amount due, to include all premiums, charges and postal costs where applicable, and received in cleared funds by Whittons.

**e)** All items are held at the risk of the buyer. If they are not removed within fourteen working days of the sale the auctioneers will instruct a local carrier to remove them for storage. The buyer will be responsible for paying all charges incurred and for making arrangements in advance for the removal of items from their store after payment of their charges and on production of our receipt for the items.

### 7. REMEDIES IN THE EVENT OF NON-PAYMENT OR PURCHASES NOT BEING COLLECTED ON TIME

If any lot is not paid for in full and taken away in accordance with these conditions or if there is any other breach of these conditions, we, as agent for the seller and on our own behalf, shall at our absolute discretion and without prejudice to any other rights we may have be entitled to exercise one or more of the following rights and remedies: To proceed against you for damages for breach of contract;

**a)** To rescind the sale of that lot and/or any other lots sold by us to you;

**b)** To resell the lots (by auction or private treaty) in which case you shall be responsible for any resulting deficiency in the total amount due (after crediting any part payment and adding any resale costs). Any surplus so arising shall belong to the seller;

**c)** To remove, store and insure the lot at your expense and, in the case of storage, either at our premises or elsewhere;

**d)** To charge interest at a rate not exceeding 1.5% per month on the total amount due to the extent it remains unpaid for more than seven working days after the sale;

**e)** To retain that or any other lot sold to you until you pay the total amount due

**f)** To reject or ignore bids from you or your agent at future auctions or to impose conditions before and such bids shall be accepted.

**g)** To apply any proceeds of sale of other lots due in future becoming due to you towards the settlement of the total amount due and to exercise a right to possession (lien) of any of your property in our possession for any purpose until the debt due is satisfied.

**h)** We shall, as agent for the seller and on our own behalf pursue these rights and remedies only so far as is reasonable to make appropriate recovery in respect of breach of these conditions.

### 8. THIRD PARTY LIABILITY

All members of the public enter our premises at their own risk. They must make themselves aware of all security and fire arrangements in the building and to note the layout of the accommodation. Accordingly neither the Auctioneer nor our employees or agents shall incur any liability for death or personal injury (except as required by law by reason of our negligence) or similarly for the safety of persons visiting prior to or at a sale.

### 9. RIGHT TO REFUSE ENTRY

Whittons shall have the right at our discretion, to refuse admission to our premises or attendance at our auctions by any person.

### 10. COMMISSION BIDS

We will, if so instructed, execute bids on a buyer's behalf. The bid must be received by us no later than one hour prior to the commencement of the sale for which the lot is being sold. The bid must be clearly written or typed, and must have the full name, address and telephone number of the person bidding, and signed by the person making the bid. Neither the Auctioneer nor our employees shall be held responsible for any failure to do so save where such failure is unreasonable. Where two or more commission bids are received at the same price, the Auctioneer reserves the right and absolute discretion to choose which bid shall prevail. It will be assumed that the prospective buyer has carefully inspected the lot and has satisfied themselves as to its condition prior to leaving the commission bid. No bids can be retracted once the item has been sold.

### 11. WARRANTY OF TITLE AND AVAILABILITY

The seller warrants to the auctioneers and the buyer that the seller is the true owner of the property consigned or is properly authorised by the true owner to consign it

# WHITTONS AUCTIONS

for sale and is able to transfer good title to the property free from any third party claims.

## 12. AGENCY

The auctioneers normally act as agent only and disclaim any responsibility for default by sellers or buyers.

## 13. TERMS OF SALE

The seller acknowledges that Lots are sold subject to the stipulations of these conditions in their entirety and on the terms of consignment as notified to the consignee at the time of the entry of the lot.

## 14. DESCRIPTIONS

Whittons will not be held responsible for misrepresentation, and any wording or description either spoken written discussed published or otherwise shall not form the basis of any contract. Items are described as opinion only, and whilst due diligence is taken to make accurate descriptions, it may be impracticable to ensure accuracy in its entirety. All items are therefore sold as seen and prospective buyers must inspect view and take their own independent expert advice should they so wish before bidding on any item in any sale and must satisfy themselves as to the accuracy of any description applied to a lot. Prospective buyers bid on the understanding that representations or statements as to authorship genuineness origin date age provenance condition size shape weight colour etcetera are opinions only. Subject to the foregoing neither we the auctioneer nor our employees or agents nor the seller accept liability for the correctness of such opinions and all conditions and warranties, whether relating to description, condition or quality of lots, express, implied or statutory, are hereby excluded. Private treaty sales made under these conditions are deemed to be sales by the auction for purposes of consumer legislation.

Notwithstanding this condition any Lot which proves to be a deliberate forgery as defined may be returned to us by you within 14 days of the auction provided it is in the same condition as when bought, and is accompanied by particulars identifying it from the relevant catalogue description and a written statement of defects. If we are satisfied from the evidence presented that the Lot is a deliberate forgery we shall refund the money paid by you for the Lot including any buyer's premium provided that

a) if the catalogue reflected the accepted view of scholars and experts as at the date of sale or

b) you personally are not able to transfer a good and marketable title to us, you shall have no rights under this condition.

The right of return provided by this Condition is additional to any right or remedy provided by law or by these Conditions of Sale.

## 15. ONLINE BIDDING

Whittons may offer an online bidding service via [www.the-saleroom.com](http://www.the-saleroom.com) for bidders who cannot attend the sale. In completing the bidder registration on [www.the-saleroom.com](http://www.the-saleroom.com) and providing your credit card details and unless alternative arrangements are agreed with Whittons you:

a) authorise Whittons if they so wish to charge the credit card given in part or full payment including all fees for items successfully purchased in the auction via [www.the-saleroom.com](http://www.the-saleroom.com) and

b) confirm that you are authorised to provide these credit card details to Whittons through [www.the-saleroom.com](http://www.the-saleroom.com) and agree that Whittons are entitled to dispatch the goods to the card holder name and card holder address provided in fulfilment of the sale.

Please note that any lots purchased via the [www.the-saleroom.com](http://www.the-saleroom.com) live auction service will be subject to an additional 3% commission charge + VAT at the standard rate imposed on the hammer price. Buyers registering to bid through [www.the-saleroom.com](http://www.the-saleroom.com) must submit credit/debit card details to register. Whittons will take a deposit of maximum £500.00 sterling from the registered credit / debit card at the discretion of the auctioneer. If the buyer is unsuccessful this deposit will be refunded. If successful the deposit will be deducted from the final invoice. The deposit will be subject to variables in exchange rates and bank charges that the buyers' bank might levy. The buyer will be liable for such charges.

## 16. CHEQUES

Cheques will only be accepted for payment at the auctioneer's discretion. No purchases will be removed from the saleroom unless cleared funds have been received by us. Any prospective purchasers who wish to pay by cheque must inform the auctioneers at least 7 working days before the sale. It will be at the auctioneer's discretion whether to take a cheque in lieu of prospective purchases prior to the sale and allowing for clearance of the cheque. If you are later unsuccessful in your purchase, the amount of your cheque will be refunded. Payment in cheque will not be acceptable on the day of the sale if prior arrangement has not been made with the auctioneer but if you wish to pay using this method then your purchases will be withheld until full clearance of the cheque has been granted. Only authorised payments by card or cash will be allowed to allow removal of goods on sale day.

## 17. TELEPHONE PAYMENTS

Payments will not be accepted if made at the telephone for invoices of more than £300.00 unless the buyer is known to the auctioneer. Card payments can be made in person or by bank transfer cash up to £6000.00 (Six Thousand Pounds Sterling).

## 18. SELLER'S COMMISSION AND CHARGES

Commission is charged at 15% plus VAT at the standard rate on the hammer price. Items which sell for less than £20.00 will incur a commission charge of £5.00 plus VAT at the standard rate. No charge will be made for items which fail to sell. Withdrawn lots may incur an administration charge if withdrawn once the item has been published for sale. No charges are made for catalogue illustration photography or advertising unless special illustration photography or advertising is deemed necessary and not without the consent of the vendor. A charge of £3.00 per item will be charged per item for each item that requires electrical testing.

## 19. RESERVES

Items will only be accepted with reserve which, in the auctioneer's opinion, are likely to realise at least £20.00 or more. Any item worth less than this value will be deemed to be entered for sale without reserve. Any items which are taken with a reserve price will be accepted on the basis that the auctioneer will have discretion to sell that item for 10% less than the reserve if a buyer at that price exists on the day. Whittons can

refuse to accept any item for sale where, in the auctioneer's opinion, the reserve price suggested by the seller is too high and/or the item would not sell.

## 20. SELLER'S CONDITIONS

a) All sellers must sign the declaration confirming conditions of sale on the receipt which is given to you when you submit goods to us for sale. All items handed over to us are assumed to be given to us for the purpose of entering those lots for sale by auction.

b) All sellers must sign to confirm that they are the true owners of the goods entered for sale and that they have legitimate title to those goods free of any encumbrance and free from any third party or that they have authority to dispose of the goods on behalf of the true owner and are able to transfer good and marketable title to the property free from any third party claims.

c) All goods entered for sale must comply with all safety regulations under the Consumer Protection Act and the Furnishing Fire / Safety Regulations 1988.

d) The seller authorises Whittons to deduct commission at the rates quoted and by the signing the form, the seller is deemed to have accepted the terms and conditions of sale.

e) The seller has a duty to disclose all defects restorations or alterations to the goods at the time they are entered for sale and is duty bound to bring such defects restorations or alterations to auctioneer's attention in writing. Failure to do so notwithstanding any description of the goods given by the auctioneers can result in the sale being rescinded and the seller being responsible for all allied costs incurred by the auctioneer and the buyer.

f) The seller warrants in respect of any item of mechanical or electrical equipment that it is:

a. in working order

b. reasonably fit for the purpose for which it is designed or adapted

c. that it can be used safely and without risk of causing injury or damage and

d. will indemnify Whittons against any loss or damage suffered in consequence of any breach of the above warranty and undertaking.

g) The Vendor gives Whittons full and absolute right to photograph and illustrate any lot placed with them for sale and to use such photographs and illustrations at any time at their absolute discretion whether or not in connection with the auction.

h) Sellers selling any assets of their business must disclose whether they are registered for value added tax (VAT) at the time the goods are presented for sale and disclose the VAT registration number and indicate clearly whether the goods are to be sold under the margin scheme and where this is the case, VAT will not be recoverable by the seller.

English law applies to the interpretation of these Conditions.







THE FINE ART AUCTION ROOMS  
DOWELL STREET · HONITON · DEVON EX14 1LX  
01404 517000 · 01392 345454  
info@whittonsauctions.co.uk  
www.whittonsauctions.co.uk