



CHRISTMAS AUCTION

8th December 2016

Cover illustrations

Front: Lot 366

Inside Front: Lot 622

Inside Back: Lot 466

Back: Lot 81





CHRISTMAS AUCTION

THURSDAY 8TH DECEMBER 2016

Commencing at 10.00 am

Live Internet bidding via

the-saleroom.com

EACH LOT IS ILLUSTRATED ONLINE

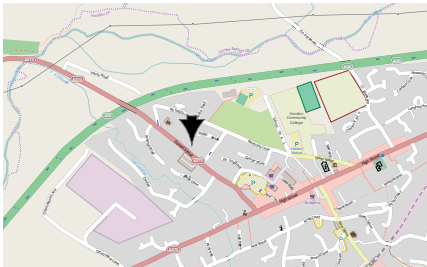
VIEWING TIMES:

Sunday 4th December 10.00am – 12.30pm

Monday 5th December 9.30 am - 4.30 pm

Tuesday 6th December 9.30 am - 4.30 pm

Wednesday 7th December 9.30 am - 4.30 pm



**THE FINE ART AUCTION ROOMS
DOWELL STREET
HONITON
DEVON
EX14 1LX
01404 517000 · 01392 345454
info@whittonsauctions.co.uk
www.whittonsauctions.co.uk**

**ALL COMMISSION BIDS AND TELEPHONE
BIDS MUST BE REGISTERED WITH THE
AUCTIONEERS BY 4.30 PM THE DAY BEFORE
THE SALE**

**YOU MUST REGISTER TO BID.
PHOTOGRAPHIC IDENTIFICATION REQUIRED.**

**A 10% DEPOSIT OF THE LOWER ESTIMATE
OF THE LOT(S) ON WHICH YOU WISH TO
BID IS REQUIRED FOR ALL TELEPHONE BIDS.
FORMS ARE AVAILABLE TO DOWNLOAD
FROM OUR WEBSITE.**

**PHOTOGRAPHIC ID REQUIRED FROM
ANYONE WISHING TO VIEW THE JEWELLERY.**

BUYERS PREMIUM 15% + VAT



Order of sale

Thursday 8th December at 10.00am

Silver I - 209

There will be a 15 minute break.

Jewellery 221 - 367

Watches 371 - 402

There will be a 15 minute break.

Collectables, China, Pictures and Postcards
405 - 609

Furniture 625 - 685

Silver





1

1. An attractive embossed double ink stand with leaf decoration. London. By C&H. Est. £150 - £200.

2. A small tortoiseshell mounted and embossed handled paper knife decorated with flowers and leaves. Birmingham. By C&N. Est. £20 - £30.

3. An attractive engraved cream jug decorated with flowers and leaves with gilt interior on pedestal base. Sheffield. By H&M. Approx. 138 grams. Est. £40 - £60.

4. An attractive ebony and silver mounted box with engraved decoration. London. By RF&D. Est. £40 - £60.



5

5. A good half fluted porringer embossed with flowers and leaves with textured handle. Dublin. By H&F. Approx. 160 grams. Est. £60 - £80.

6. A pair of attractive embossed sweet dishes heavily decorated with flowers and leaves. London. By WC. Approx. 328 grams. Est. £120 - £150.

7. A good quality domed top muffin dish and liner with turned handle. Sheffield. By JD&WD. Approx. 405 grams. Est. £220 - £250.

8. An attractive pair of pierced bonbon dishes decorated with flowers on hoof feet with beaded rim. Birmingham. By Elkington & Co. Approx. 204 grams. Est. £200 - £250.

9. An attractively etched Continental silver mounted jug with thumb piece and gilded pouring lip. Approx. 18 cms high. Est. £120 - £150.

10. An attractive conjoined oil and vinegar bottle with silver mounts. Birmingham. By JHM. Est. £80 - 100.

11. A small conjoined oil and vinegar bottle with stoppers and silver rim. Est. £80 - £100.

12. A Continental carved silver three piece cruet on ball feet, the tops mounted with peacocks. Est. £130 - £150.

13. A good quality heavy octagonal coffee pot with side spout and reeded borders. London 1912. By A&S. Approx. 879 grams. Est. £550 - £650.

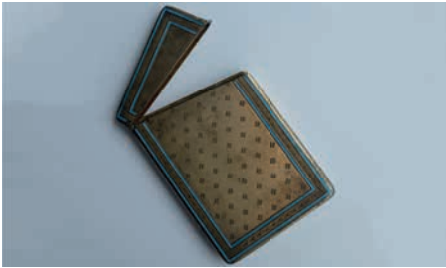


14

14. A good pair of shaped candlesticks on rectangular bases measuring approx. 13.5 cms high. Sheffield 1910. By MH&Co. Est. £300 - £350.

15. A good boxed six piece cruet with matching spoons and blue glass liners. Birmingham 1939. By M&W. Est. £280 - £320.

16. A rectangular shaped edge inkstand with matching bottle on four splayed legs. London 1911. By G&S. Est. £180 - £220.



17

17. An attractive Continental silver card case with blue enamel decoration and hinged top. Approx. 126 grams. Est. £100 - £150.

18. A pair of heavy bead edge sauce ladles. London. By RM&CH. Approx. 171 grams. Est. £60 - £80.

19. A small helmet shaped half fluted cream jug. London. By EKE. Approx. 82 grams. Est. £30 - £50.

20. A half fluted cream jug with gilt interior on flat base. London. By CB. Approx. 231 grams. Est. £100 - £150.

21. A heavy set of six fiddle pattern dessert forks. Newcastle. By D&R. Approx. 265 grams. Est. £80 - £120.

22. A heavy Continental Islamic box decorated with flowers and leaves. Approx. 11 cms in diameter, weighing approx. 215 grams. Est. £90 - £120.

23. A small two handled quaich on pedestal base with oval embossed plaque "EDINBURGH & DISTRICT TOURING CLUB LTD." Birmingham. By LA&D. Approx. 116 grams. Est. £60 - £80.

24. A large OE pattern ladle. London. By GB. Est. £100 - £150.

25. A small pair of tapered spill vases. Approx. 14 cms high. Approx. 124 grams. Est. £50 - £60.

26. A heavy Georgian half fluted swing handled basket with gadroon rim. London 1815. By WE. Approx. 933 grams. Est. £450 - £500.

27. A small circular tea caddy with lift off cover. Birmingham. By SM&Co. Approx. 80 grams. Est. £40 - £60.



28

28. A good cut glass pepper grinder with turned handle. London. By JG&S. Est. £50 - £80.

29. A boxed pair of salts with shaped edges and matching spoons. Birmingham. By JC&Co. Est. £20 - £30.



30

30. A good half fluted small muffin dish with turned handle. London. By S&Co. Approx. 326 grams. Est. £100 - £150.

31. A small circular dish with wavy edge. Sheffield. By H&A. Approx. 155 grams. Est. £30 - £50.

32. A small stylish tea strainer with shell thumb piece. Birmingham. By D&F. Approx. 28 grams. Est. £15 - £20.

33. A good quality cream and sugar basin with canted corners on pedestal base. Sheffield 1926. by HI&Co. Est. £250 - £300.

34. A Victorian caddy spoon with ball decoration. London 1881. By GA. Est. £60 - £80.

35. A good sauce boat with reeded rim and panelled sides. Sheffield 1930. By CWF. Approx. 176 grams. Est. £120 - £160.

36. A good quality two handled sugar basket with embossed decoration. Birmingham 1905. By CW&S. Approx. 187 grams. Est. £150 - £200.

37. A Kings' pattern stilton scoop. London. By IL&HL. Approx. 103 grams. Est. £60 - £80.



38

38. A stylish baluster shaped teapot with chased decoration and leaf mounts. Birmingham. By RM&EH. Approx. 377 grams. Est. £180 - £220.

39. A good quality Continental silver casket on four ball feet with hinged top and side handles. Stamped to base. Approx. 153 grams. Est. £200 - £250.

40. A good Georgian rectangular salver with gadroon rim on four scroll legs. London. By SH. Approx. 559 grams. Est. £250 - £300.



41

41. A Continental figure of a bird with textured body. Approx. 55 grams. Est. £40 - £60.

42. A silver mounted pottery handled jack. London. By SS&S Ltd. Approx. 19 cms high. Est. £120 - £150.

43. A good quality rectangular snuff box with gilt interior and foliate thumb piece. Birmingham 1835. By E&S. Approx. 168 grams. Est. £350 - £400.

44. A heavy boat shaped cigar box with hinged side. Approx. 216 grams. Birmingham. By Mappin & Webb. Est. £100 - £150.

45. An attractive cranberry glass decanter with hinged top and shell thumb piece, the body etched with flowers and scrolls. London. By EH. Est. £300 - £350.

46. A good pair of embossed beakers with reeded rim, the front decorated with flowers and leaves. London 1893. By GMJ. Approx. 227 grams. Est. £250 - £300.

47. A silver and glass overlay decanter with tapered stopper together with six matching glasses. Est. £100 - £150.



47

48. GORHAM: A good tapered green glass vase mounted on a silver base. Est. £70 - £90.

49. A good heavy dome top muffin dish and liner with reeded top. Sheffield. By G&H. Approx. 652 grams. Est. £250 - £300.

50. A good enamel top scent bottle with panelled sides. London. By WAE. Est. £50 - £60.

51. A good pair of boxed silver bladed fish servers with engraved decoration. Sheffield 1893. By WG&JL. Est. £160 - £180.

52. A large two handled pedestal bowl. Birmingham 1908. By BB. Approx. 700 grams. Est. £450 - £500.



53

53. A good quality George II tapering coffee pot on circular pedestal base, the body embossed with flowers, leaves and scrolls, with pineapple finial. London 1747. By John Jacob. Approx. 766 grams. Est. £1200 - £1500.

54. An attractive small sugar basin with wavy rim, reeded decoration and crested side. London 1898. By TB. Approx. 138 grams. Est. £140 - £160.

55. A Continental scent bottle in the form of a fish with textured body. Approx. 48 grams. Est. £30 - £50.

56. A pair of Continental silver rattles together with a gem set scent bottle on suspension chain. Approx. 96 grams. Est. £30 - £50.

57. A large Continental silver necklace on suspension chain with numerous drops, the front mounted with Eastern gold panel and decorated with flowers. Approx. 310 grams. Est. £150 - £200.

58. A good set of Continental teaspoons together with matching cocktail sticks. Approx. 195 grams. Est. £50 - £80.

59. A good quality heavy Continental silver belt with ball decoration and tassel drops. Approx. 795 grams. Est. £160 - £180.



60

60. A good quality Georgian style tapered coffee pot with reeded finial. London. By WW. Approx. 743 grams. Est. £300 - £350.

61. A small half fluted water jug with card cut rim. London. By GL. Approx. 318 grams. Est. £140 - £160.

62. A large unusual compact in the form of a guitar decorated with flowers and leaves. Approx. 16 cms long. *Est. £350 - £400.*

63. A good quality heart shaped box with hinged top, gadroon decoration and bow mount. London 1882. *Est. £350 - £400.*

64. A pair of heavy Exeter fiddle pattern ladles. Approx. 155 grams. *Est. £60 - £80.*

65. A good pair of fiddle and thread grape scissors with ring thumb piece. London. by SB&S. Approx. 101 grams. *Est. £100 - £150.*

66. A heavy set of four fiddle pattern dessert forks. Exeter. By JS. Approx. 187 grams. *Est. £60 - £80.*

67. A small cranberry glass double ended scent bottle with embossed top. *Est. £40 - £60.*

68. A stylish engine turned and enamel Art Deco cigarette box. Birmingham. By JC Ltd. Approx. 105 grams. *Est. £40 - £60.*

69. A good Continental pierced dish attractively decorated with flowers and scrolls. Approx. 227 grams. *Est. £120 - £150.*

70. A good pair of octagonal pierced sweet dishes decorated with flowers and leaves. Sheffield. By W&H. Approx. 113 grams. *Est. £65 - £75.*



71

71. An attractive pierced comport decorated with swags and leaves. Approx. 13 cms high. Sheffield. By WS. Approx. 353 grams. *Est. £80 - £120.*

72. An attractive purse decorated with flowers and shells. Birmingham. By GU. *Est. £80 - £120.*



73

73. A good quality double picture frame decorated with scrolls, flowers and cherubs. London. By WC. *Est. £80 - £120.*

77. A set of six decorated Chinese teaspoons with entwined snakes. Approx. 80 grams. *Est. £25 - £30.*

78. A small silver cigarette case with cut corners. Birmingham. By C&C. Approx. 103 grams. *Est. £25 - £30.*

79. An attractive engraved hinged top vesta case. Birmingham. Approx. 34 grams. *Est. £25 - £35.*

80. A bag containing numerous sixpences. Approx 105 grams. *Est. £25 - £35.*

81. A good set of four menu holders in the form of stags' heads, with gemstone eyes on circular bases. Birmingham 1912. *Est. £400 - £500.*

82. An unusual vesta/box with hinged top mounted with a wick. Birmingham 1915. By Herbal & Allday. Approx. 82 grams. *Est. £180 - £220.*

83. ASPREY: A good quality rectangular pill box with hinged top to gilt interior. London 1905. Approx. 68 grams. *Est. £80 - £120.*

84. A Georgian half pint mug of baluster form. London. By JG&RG. Approx. 254 grams. (Patched to side.) *Est. £100 - £150.*

85. A Georgian style taper candlestick with scroll decoration. Birmingham. By TE. Approx. 73 grams. *Est. £40 - £60.*

86. A good quality blue enamelled ring box with fitted interior and hinged top. Birmingham. By CF. *Est. £80 - £120.*

87. A good pair of apostle serving spoons with reeded stem. Chester. By JMB. Approx. 111 grams. *Est. £30 - £50.*

88. A good set of Sterling Royal Danish cutlery consisting of eight teaspoons, eight tea forks, eight dessert spoons, eight dessert forks and four serving spoons. Approx. 1583 grams together with eight table knives. *Est. £500 - £600.*



89

89. A kings' pattern sifter ladle, the bowl pierced with leaves and flowers. London 1823. *Est. £70 - £80.*

90. A good Art Deco caster with pierced lift off cover and ball finial. Sheffield 1917. By TL. Approx. 122.8 grams. *Est. £80 - £120.*

91. A small reeded scent bottle with hinged top and suspension chain. *Est. £60 - £80.*

92. A small rectangular hinged vinaigrette with gilded interior. London. By WD *Est. £40 - £60.*

93. An unusual novelty pin cushion in the form of a shoe with floral decoration. Bearing import marks for Sheffield. Approx. 32 grams. *Est. £30 - £50.*

94. A good quality MOP engraved snuff box with cut corners, the panel decorated with flowers and leaves. *Est. £100 - £150.*

95. A good quality enamel decorated vesta case inscribed "LIBERTÉ". Birmingham. By RC. Approx. 31.9 grams. *Est. £150 - £200.*

96. A good quality rectangular snuff box with gilt interior, reeded sides and floral thumb piece. Birmingham 1834. By T&P. *Est. £200 - £250.*

97. A George III plain oval vinaigrette. London 1797. By R. Biggs. *Est. £160 - £180.*

98. A good rectangular bright cut vinaigrette. Birmingham 1825. By John Betteridge. *Est. £120 - £150.*



99

99. An unusual Victorian silver flask with engraved decoration. Birmingham 1869. Together with matching goblet with Russian hallmarks. *Est. £180 - £220.*

100. A good quality green and gold overlaid scent bottle with hinged top. *Est. £200 - £250.*

101. A good banded agate scent bottle with tapered decoration and chased gold top. *Est. £150 - £200.*

102. A pair of good Georgian sugar tongs with bright cut decoration and acorn mounts. London. By S&W. Approx. 25 grams. Est. £15 - £20.

103. A pair of Georgian sugar tongs with reeded mounts. London. By Peter, Anne and William Bateman. Est. £15 - £20.

104. A small heart shaped toast rack on ball feet. Birmingham. By JT&JK. Approx. 42 grams. Est. £30 - £50.

105. A Georgian stilton scoop with carved MOP handle. Sheffield. By JL. Approx. 42 grams. Est. £40 - £60.

106. A good Continental four strand albertina decorated with scrolls and flowers. Approx. 70 grams. Est. £30 - £50.

107. A bag containing Continental silver brooches, bracelets etc. Approx. 126 grams. Est. £30 - £50.



108

108. A pair of heavy stylish lapis mounted napkin rings. London. By PB&H. Approx. 77 grams. Est. £40 - £60.

109. A set of three Exeter fiddle pattern dessert forks. By IP. Approx. 137 grams. Est. £80 - £120.

110. A good set of five, plus five, fish knives and forks, attractively engraved with scrolls and flowers. Birmingham. By J&G. Est. £100 - £150.

111. An attractively engraved Victorian sugar bowl and cream jug decorated with leaves and flowers. London. By WWW. Approx. 435 grams. Est. £180 - £220.

112. An attractive circular sweet dish decorated in the form of a flower on pedestal base. Sheffield. By H&A. Approx. 221 grams. Est. £80 - £120

113. A large rectangular cigarette case with leaf decoration and fitted interior. London. By WC. Est. £80 - £100.

114. A cased set of apostle top teaspoons together with a cased set of six nail top spoons. Est. £50 - £80.



115

115. A heavy pair of modernistic vases of tapered design. Birmingham. By D&F. Approx. 299 grams. Est. £80 - £120.

116. An OE bottom marked spoon with crested terminal. London. By GJ. Est. £30 - £50.

117. A good enamel compact with naval crown mount, mirrored interior and engine turned back. Birmingham. Approx. 105 grams. Est. £80 - £100.

118. An attractive Scottish paper knife with ivory blade to agate handle and engraved decoration. Birmingham. Approx. 19.5 cms. By JWV. Est. £150 - £200.

119. A stylish Art Nouveau pin cushion in the form of a chair. Birmingham 1907. By SB&S Ltd. Approx. 33 grams. Est. £150 - £200.

120. A good pair of heavy bone handled fish servers with engraved blade. Sheffield. By FC. Approx. 205 grams. Est. £80 - £120.

121. Two heavy silver Continental bangles with engraved decoration. Approx. 129 grams. Est. £30 - £50.

122. A small stylish armada dish with crested decoration. Birmingham modern. By F&H. Approx. 122 grams. Est. £30 - £50.

123. A pair of fiddle pattern tablespoons. London. By WE,WF&WC. Approx. 156 grams. Est. £30 - £50.



124

124. A large good quality salver on three leaf decorated supports, the front decorated with flowers and leaves and beadwork border. London 1865. By Barnards. Approx. 1445 grams. Est. £1000 - £1200.

125. A good quality three piece tea service of circular form on pedestal base. Chester 1905. By W. Neale. Approx. 630 grams. Est. £300 - £350.

126. A heavy set of twelve Georgian OE dessert forks. London. By WE. Approx. 490 grams. Est. £200 - £250.

127. A heavy set of eleven Georgian table forks. London. By WE. Approx. 756 grams. Est. £350 - £400.

128. A pair of OE sauce ladles together with a cream ladle with gilt bowl. London. By TG. Approx. 117 grams. Est. £50 - £80.

129. A heavy set of six Georgian OE tablespoons. London. Approx. 415 grams. Est. £250 - £300.

130. A good plated shagreen tea caddy with lift off cover and gadroon rim. Approx. 11 cms high. Est. £150 - £200.



131

131. A fine quality Russian vinaigrette, the front with niello decoration, the base decorated with an armorial and the interior with pierced grill. Marked "84-OE". Approx. 59.4 grams. Est. £350 - £400.

132. A good quality enamelled cigarette case decorated with an Oriental man in recumbent pose. Approx. 105 grams. Est. £250 - £300.

133. An unusual Russian napkin ring with beaded decoration. Approx. 40 grams. Est. £60 - £80.

134. A heavy Sterling cup attractively engraved with flowers, leaves and reeded borders. Approx. 196 grams. Est. £60 - £80.

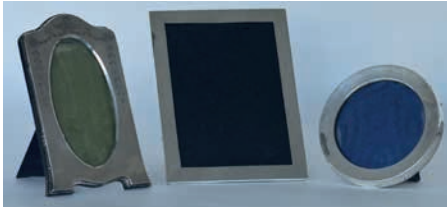
135. A set of four Victorian silver engraved salts. London. By R&H. Approx. 154 grams, together with a drum mustard. Est. £80 - £120.

136. A fiddle pattern sifter spoon together with a Continental spoon etc. Est. £50 - £80.

137. A good quality drum mustard with hinged top and scroll handle to pedestal base, complete with blue glass liner. Est. £40 - £60.

138. A boxed pair of modernistic napkin rings. Birmingham. Together with a heavy modernistic napkin ring. Approx. 54 grams. Est. £40 - £60.

139. A good Georgian five bottle cruet on mahogany swivelling stand. Est. £120 - £150.



140

140. An attractive arched top picture frame engraved with flowers and swags. Birmingham. By JD&WD. Together with a circular example. Est. £200 - £250.

141. A good arched top picture frame. Birmingham. By H&M. Approx. 23 cms high. Est. £200 - £250.

142. A set of four fiddle pattern dessert spoons. London. By WF. Approx. 172 grams. Est. £50 - £80.

143. A boxed set of six apostle top teaspoons. Sheffield. By TL. Approx. 70 grams. Est. £20 - £30.

144. A boxed set of six nail top coffee spoons. Sheffield. By FH. Est. £20 - £30.

145. A boxed set of six bean top coffee spoons together with enamelled spoons etc. Est. £20 - £30.

146. A good Georgian tortoiseshell and gold mounted, hinged top snuff box. Est. £150 - £200.

147. A good quality Chinese cigarette box heavily decorated with dragons and figures. Stamped "WC/90". Est. £400 - £500.

148. An unusual Continental glass mounted scent bottle with threaded top and gilt stopper, the base incorporating a hinged patch box marked RH. Est. £300 - £400.

149. A pair of heavy fiddle pattern table forks. London. By WC. Approx. 142 grams. Est. £30 - £50.

150. Two pairs of Georgian OE sugar tongs. Approx. 65 grams. Est. £20 - £30.

151. A Georgian style cream jug with reeded rim on square base and reeded top. London. By AP. Approx. 110 grams. Est. £40 - £60.



152

152. A good boxed set of twelve, plus twelve MOP dessert eaters with silver blades. Sheffield. By RJM. Est. £200 - £250.



153

153. A heavy set of six silver circular pin dishes inset with coins dated 1780. Approx. 576 grams. Est. £150 - £200.

154. A heavy set of six silver circular pin dishes inset with coins dated 1780. Approx. 576 grams. Est. £150 - £200.

155. A small plain silver sovereign case with gold hinge. London. By SM. Approx. 23 grams. Est. £30 - £50.

156. A tall baluster shaped caster on pedestal base. London. By CE. Approx. 186 grams and approx. 18.5 cms high. Est. £120 - £150.

157. A good Continental bleeding bowl with crested front, apparently unmarked. Approx. 167 grams. Est. £60 - £80.

158. A good quality Continental silver cigarette box of square form and mahogany lined interior. Approx. 337 grams. Est. £80 - £100.

159. A good set of six silver gilt teaspoons with crested terminals. London. By NC&Co. Est. £30 - £40.

160. A good quality plated pepper grinder with reeded decoration inscribed "To HRH The Ruler of Bahrain from the Dorchester Hotel". Est. £30 - £50.

161. A pair of fiddle pattern dessert forks. London. Together with a sugar shovel. Approx. 107 grams. Est. £30 - £50.

162. A hinged top glass inkwell inset with coin. London. By G&S Ltd. Est. £30 - £50.

163. A good quality early Victorian double ended marrow scoop. London 1839. Approx. 62.2 grams. Est. £150 - £200.

164. A good quality pedestal sugar bowl with engraved decoration. London 1872. By Barnards. Approx. 165 grams. Est. £140 - £180.

165. A good pair of cast salts with cut corners and glass liners. Dublin. By LAC. Approx. 600 grams. Est. £150 - £200.

166. A good silver swing handled basket with blue glass liner. London. By C&C. Est. £50 - £60.

167. A good quality half fluted seven piece cruet set in fitted case. Sheffield. By WH. Est. £250 - £300.

168. An ornate silver cream jug embossed with cherubs and flowers. Approx. 183 grams. Est. £100 - £150.

169. A good set of four engine turned bridge pens with tassel decoration. Est. £50 - £60.

170. A boxed three piece cruet set together with matching spoons. Est. £70 - £80.

171. An unusual silver pipe tamper. Chester. By S Mordon. Approx. 38 grams, and approx. 30 cms long. Est. £80 - £120.

172. An unusual Continental spoon with textured border and snake decoration. Approx. 24 grams. Together with a pair of Georgian pierced sugar tongs. Est. £20 - £30.

173. A novelty plated table lighter in the form of a bear sat on a ball with hinged head on square pedestal base. Approx. 12 cms. Est. £120 - £150.

174. A pair of attractive pierced silver bladed fish servers decorated with leaves and flowers and reeded ivory handles. Sheffield. By JBR. Est. £150 - £200.

175. A pair of early Victorian fiddle pattern ladles. London 1841. By JB. Approx. 152 grams. Est. £80 - £120.

176. An attractive George II berry spoon with engraved decoration. London 1736. Approx. 50 grams. Est. £60 - £80.

177. An attractive oval tea caddy with hinged lid, the body embossed with scenes. Approx. 70 grams. Est. £220 - £260.

178. An unusual vesta case/tobacco box with hinged top. Birmingham 1912. By Elkington. Est. £200 - £250.

179. A good Georgian vinaigrette attractively engraved with gilded interior and pierced top. London 1822. By TE. Est. £180 - £220.

180. An unusual book shaped vinaigrette with pierced grill decorated with flowers and leaves. Birmingham 1845. By ES. Est. £180 - £220.



181

181. A good large rattle in the form of "Mr Punch" with four suspending bells. Birmingham 1922. By C&N. Est. £180 - £220.

182. An unusual double sided bridge marker. London. By CL&Co. Est. £80 - £100.



183

183. A good pair of cased salad servers with turned ivory handles. Sheffield. By HA. Est. £120 - £150.



184

184. A good quality plated cup and cover, the body decorated with cabochon stones and cherubs playing musical instruments on circular pedestal base. By Elkington. Approx. 25 cms high. Est. £250 - £350.

185. An unusual Victorian engine turned sliding top vesta case with ring mount. London 1870. Est. £180 - £220.

186. An unusual engine turned double opening card case. Birmingham 1922. Est. £80 - £120.

187. A good quality spring mounted card case with gilt interior. Birmingham 1918. By WM&Co. Est. £80 - £120.

188. ASPREY: An unusual silver and enamelled glass compact with mirrored interior and tapestry top. Birmingham 1937. Est. £130 - £150.

189. A group of two small silver picture frames. *Est. £50 - £80.*

190. A heavy silver circular armada dish with reeded rim. London. By RC. *Est. £30 - £50.*

191. A good early punch ladle heavily embossed with flowers, birds and insects inset with coin to ebony handle. *Est. £180 - £220.*



192

192. A good George III embossed lidded tankard decorated with flowers, leaves and vacant cartouche. Approx. 801 grams. *Est. £1400 - £1600.*

193. An unusual plated jewellery casket with hinged top, crested front and thistle decoration, complete with fitted interior. *Est. £220 - £260.*

194. A bag containing fiddle pattern teaspoons together with a set of six OE dessert spoons. Approx. 344 grams. *Est. £80 - £120.*

195. An attractive pierced buckle decorated with leaves and flowers together with a card case. Approx. 95 grams. *Est. £40 - £60.*

196. A set of twelve, plus twelve, Kings' pattern dessert eaters. Sheffield. By WC&WL. *Est. £300 - £350.*

197. A Kings' pattern silver handled bread knife in fitted box together with one other. *Est. £20 - £30.*

198. A boxed set of six teaspoons. Birmingham. By D&F. Approx. 52 grams. *Est. £50 - £60.*

199. A good pair of trefid spoons, the reverse engraved with initials, with rat tail bowls attributed to Thomas Dare of Taunton. Marks worn. 1684. By TL. *Est. £1000 - £1500.*

200. A boxed set of six coffee spoons with tapered stems. Birmingham. By S Ltd. *Est. £20 - £30.*

201. A small porringer with gilt interior. Birmingham. By L&S. Approx. 74 grams. *Est. £30 - £50.*

202. A heavy tapered caster with pierced top. Approx. 97 grams. *Est. £30 - £50.*

203. A heavy cream and sugar basin with card cut rim on three scroll feet. Approx. 143 grams. *Est. £80 - £120.*

204. A silver napkin ring, a bonbon dish, Chinese pepper etc. *Est. £30 - £50.*

205. A set of four silver salts, complete with blue glass liners and two salt spoons. *Est. £20 - £30.*

206. A good heavy Irish fiddle pattern basting spoon with crested terminal. Approx. 170 grams. *Est. £100 - £150.*

207. A Continental white metal Indian necklace with tassel drops. Approx. 260 grams. *Est. £20 - £30.*

208. A boxed seven piece cruet with blue glass liners. Birmingham. *Est. £120 - £130.*

209. A good set of four Adams' style salts with gadroon rim and gilt interior on pedestal base. Approx. 300 grams. *Est. £220 - £260.*



Jewellery

221. A good quality 9 carat engine turned hinged vesta case. Approx. 16 grams. Est. £150 - £200.

222. A small diamond and sapphire five stone cluster ring in 18 carat mount. Approx. 4.5 grams. Est. £60 - £80.

223. A 9 carat amethyst single stone ring in textured gold band. Approx. 7.1 grams. Est. £60 - £80.

224. A heavy small 18 carat pendant with loop top. Approx. 3.5 grams. Est. £50 - £80.

225. An 18 carat two row diamond ring. Est. £150 - £200.

226. A gold and silver oval Victorian brooch of basket design. Est. £30 - £35.

227. An 18 carat mizpah ring. Chester 1886. Est. £100 - £150.

228. A stylish gold Arts & Crafts sapphire and half pearl necklace. Est. £550 - £650.

229. A good diamond five stone ring in 18 carat gold setting. Birmingham 1912. Est. £450 - £500.

230. An Antique Georgian pinch back guard chain. Approx. 24.5 grams. Est. £60 - £80.

231. A small sapphire and diamond three stone ring in 18 carat rub over mount. Est. £40 - £60.

232. A pair of attractive 9 carat oval engraved cuff links. Approx. 6.7 grams. Est. £50 - £80.

233. A pair of good stylish silver and enamel cuff links. Est. £30 - £50.

234. A large single stone ring in 18 carat and platinum claw mount. Approx. 3.6 grams. Est. £40 - £60.

235. A heavy silver curb link necklace with ring clasp. Approx. 97 grams. Est. £40 - £60.

236. A pair of good boxed diamond and tanzanite earrings with loop tops. Est. £500 - £600.

238. A large Antique gold seal with loop top, inset with citrine. Approx. 5.5 cms high. Approx. 27.5 grams. Est. £900 - £1000.

239. A scroll decorated Antique diamond brooch decorated with flowers and leaves. Est. £100 - £150.



240

240. A good quality onyx and diamond rectangular cluster ring, the mount with cut corners and reeded band in platinum. Est. £1500 - £2000.

241. A good sapphire and diamond five stone half hoop ring. Est. £200 - £250.

242. A Victorian silver collar with engraved decoration. Est. £140 - £160.

243. A heavy rectangular onyx signet ring in 9 carat. Est. £140 - £180.

244. A good quality cat's eye and high carat gold mounted necklace with tassel drop. Approx. 77 grams. Est. £80 - £120.



245

245. An unusual MOP necklace with high carat gold tassel drop. Approx. 58 grams. Est. £40 - £60.

246. A good Austro-Hungarian silver gilt bracelet with concealed clasp together with matching ring. Approx. 39 grams. Est. £50 - £80.

247. A good quality gilt engraved sovereign case with ring clasp. Est. £50 - £80.

248. A small string of pearl beads with concealed clasp. Est. £30 - £50.

249. A good quality pearl three strand choker with high carat sapphire concealed clasp. Est. £280 - £320.

250. An oval turquoise mounted shell cameo of a lady's head with scroll decoration. Est. £30 - £50.

251. An unusual demantoid garnet and diamond five stone ring in 18 carat gold. Birmingham 1907. Est. £350 - £400.

252. An attractive 15 carat pearl diamond and turquoise half moon shaped brooch. Est. £250 - £300.

253. MERLE BENNETT & Co: An attractive 15 carat Art Nouveau turquoise set brooch. Est. £400 - £500.

254. A circular diamond multi stone set cluster ring in 18 carat. Est. £550 - £650.

255. An Art Nouveau 15 carat sapphire and pearl flower decorated brooch. Est. £130 - £150.

256. A good heavy amber necklace with matching drop. Est. £800 - £900.

257. A pair of 14 carat knot decorated cuff links with twist decoration. Approx. 7.7 grams. Est. £80 - £120.

258. A good diamond small single stone pendant in claw mount with loop top. Est. £100 - £150.

259. A small gold emerald and diamond three stone gypsy set ring. Approx. 3 grams. Est. £30 - £50.

260. An attractive diamond baguette cut single stone ring in 18 carat claw mount. Est. £150 - £200.

261. A small pair of diamond brilliant cut ear studs in claw mount. Est. £200 - £250.

262. A good quality daisy head cluster ring in platinum claw mount. Est. £400 - £500.

263. A good oval, sapphire and diamond daisy head cluster ring in two colour gold mount. Est. £300 - £350.



264

264. An attractive French cluster ring, the central baguette cut stone surrounded by milgrain cut stones in reeded mount. Set in platinum. Est. £2500 - £3000.

265. A small pair of Antique coral earrings.
Est. £40 - £60.

266. A diamond and natural pearl crossover ring set in platinum, the diamond measuring approx. 55 points. Est. £750 - £850.

267. A large pair of circular coral and diamond cluster earrings in 18 carat gold, the central coral measuring approx. 15 mms in diameter. Est. £900 - £1100.

268. A good quality two strand bracelet with concealed clasp. Est. £60 - £80.

269. An attractive platinum Art Deco ring with marquise mount. Approx. 4.3 grams. Est. £80 - £120.

270. An emerald, amethyst and pink stone ring in 18 carat rub over mount. Approx. 3.5 grams. Est. £50 - £80.



273

273. An 18 carat ruby and diamond three stone gypsy set ring with rub over mount. Approx. 8.7 grams. Est. £150 - £200.

274. A small diamond five stone ring in 18 carat gold. Est. £80 - £120.

275. A small platinum single stone ring, the central diamond weighing approx. 30 points. Est. £200 - £250.

276. A good diamond three stone plaque ring in heavy white gold mount. Est. £600 - £800.

277. An Antique Art Nouveau sapphire and diamond hinged bangle in 15 carat gold. Est. £700 - £800.

278. A good diamond three stone ring in 18 carat claw mount. Est. £180 - £220.

279. An 18 carat white gold diamond full eternity ring. Est. £350 - £450.

280. A pair of silver and paste set buckles with steel centres. Est. £30 - £50.

281. A good quality silver gilt hinged bangle, heavily decorated with flowers and leaves and concealed clasp. Est. £60 - £80.

282. An 1895 gold pond coin mounted as a brooch. Approx. 6.2 grams. Est. £100 - £150.

283. An 18 carat coral mounted single stone gypsy ring. Approx. 12.6 grams. Est. £200 - £250.



271

271. A pair of heavy 9 carat collar stays of plain design. Approx. 22 grams. Est. £200 - £250.

272. A heavy French 18 carat pearl cocktail ring with pierced decoration. approx. 7.5 grams. Est. £100 - £150.

284. DUPONT: A gilt mounted lighter with engine turned decoration. *Est. £30 - £50.*



285

285. A 9 carat plain vesta case of wavy form and hinged top. Approx. 25.8 grams. *Est. £200 - £250.*

286. A good quality French brooch in the form of an eagle with outstretched wings clutching a pearl. Approx. 21.3 grams. *Est. £1000 - £1500.*

287. A 9 carat ring with central jade panel, the body of modernistic design. Approx. 7 grams. *Est. £100 - £150.*

288. A good pair of boxed jade cuff links with central gold panel. *Est. £400 - £500.*

289. An Edwardian diamond and aquamarine lobed ring in 18 carat. *Est. £350 - £400.*

290. A 15 carat half pearl and ruby set bangle. *Est. £450 - £500.*

291. A gold set Essex crystal brooch with rose set diamond border in the form of violets. *Est. £500 - £600.*

292. A 15 carat aquamarine and pearl pendant / necklet. *Est. £280 - £320.*

293. A heavy 18 carat two stone gypsy set ring engraved with flowers and leaves. Approx. 4.5 grams. *Est. £80 - £120.*

294. A ruby and diamond five stone 18 carat Antique ring, Birmingham 1912. *Est. £280 - £320.*

295. An attractive early Edwardian rose diamond and pearl boat shaped brooch in two colour gold. Approx. 6.5 cms in length. *Est. £350 - £400.*

296. An 18 carat diamond single stone gypsy set ring in claw mount. Approx. 4 grams. *Est. £80 - £120.*

297. A small diamond single stone ring in two colour gold mount. Approx. 2.7 grams, *Est. £40 - £60.*

298. A good opal and diamond seven stone ring in carved 18 carat mount. *Est. £100 - £150.*

299. A good ruby and diamond brooch of tapered design. Approx. 6 cms in length and approx. 5.2 grams. *Est. £80 - £120.*

300. A good quality brooch in the form of a golf club in 18 carat two colour gold mount. Approx. 4.1 grams. *Est. £80 - £120.*

301. A small red stone dress ring in 9 carat mount. Approx. 2.2 grams. *Est. £20 - £30.*



302

302. A good pair of diamond single stone ear studs in white gold rub over mount. Approx. 2 carats in total. *Est. £2500 - £3000.*

303. A 9 carat rose gold necklace with ring clasp. Approx. 6.2 grams. *Est. £60 - £80.*

304. A heavy set of four high carat gold bangles with concealed clasps. Approx. 41 grams. Est. £500 - £600.



305

305. An unusual heavy 18 carat gold brooch in the form of a rabbit mounted with a pearl, ruby, emerald and diamond, in high carat gold. Approx. 9 grams. Est. £250 - £300.

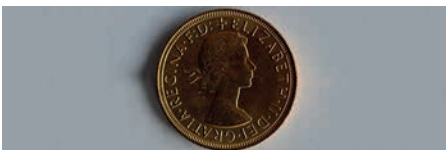
306. H STERN: A stylish cocktail ring of Art Deco design mounted with three triangles of diamonds. Approx. 5.8 grams. Est. £1000 - £1500.

307. An attractive pair of platinum cocktail earrings with loop tops and woven decoration. Est. £2500 - £3000.

308. An attractive zircon and diamond cluster ring in 18 carat claw mount. Est. £300 - £400.

309. An 18 carat ruby and diamond Antique circular cluster ring in claw mount. Est. £800 - £1200.

310. An 18 carat carved half hoop diamond ring set with five champagne diamonds totalling approx. 1.90 carats. Est. £750 - £850.



311

311. A 1959 full sovereign. Est. £180 - £220.

312. An 1872 full sovereign. Est. £180 - £220.

313. A 1911 full sovereign. Est. £180 - £220.

314. A 1911 gold coin in 9 carat claw mount. Approx. 4.7 grams. Est. £80 - £120.

315. A small garnet three row hinged bracelet with concealed clasp. Est. £30 - £50.

321. An Antique 18 carat sapphire and diamond seven stone ring. Est. £280 - £320.

323. An 18 carat small diamond cluster ring. Est. £220 - £250.

324. A good banded agate gold brooch. Approx. 4.5 cms in diameter. Est. £30 - £50.

325. A small 18 carat daisy head cluster ring. Est. £30 - £50.

326. A 9 carat circular target brooch with hinged decoration and locket back. Approx. 7.8 grams. Est. £30 - £50.

327. An attractive 15 carat pearl brooch in the form of a sword. Approx. 4.5 grams. Est. £40 - £60.

328. A good diamond three stone ring in two colour gold. Est. £150 - £200.

329. A heavy turquoise and gold necklace set in 18 carat with ring clasp. Approx. 41.3 grams. Est. £300 - £400.

330. A small 18 carat three stone diamond ring. Approx. over 0.5 carats in total. Est. £220 - £250.

331. A small 18 carat five stone ring in heavy claw mount. Est. £100 - £150.

332. An attractive 9 carat multi gem set ring in claw mount. Est. £50 - £80.



333

333. A well carved jade brooch in 14 carat triangular frame. *Est. £60 - £80.*

334. A good pair of heavy 14 carat textured cuff links. Approx. 10.8 grams. *Est. £150 - £200.*

335. Two good pairs of Georgian silver spectacles. *Est. £120 - £150.*

336. A small handbag mirror together with a fluted aide-mémoire. *Est. £60 - £80.*

337. A heavy 18 carat diamond three stone gypsy set ring. *Est. £180 - £220.*



338

338. A good quality large diamond heart shaped pendant set in high carat gold, measuring approx. 30 mms. Total diamond weight approx. 6 carats. *Est. £2500 - £3000.*

339. A two stone diamond crossover ring in 18 carat mount. *Est. £130 - £150.*

340. An attractive Edwardian sapphire and diamond marquise shaped ring in 15 carat gold. *Est. £250 - £300.*

341. A large aquamarine and diamond tear drop pendant set in gold on fine link chain. *Est. £700 - £900.*



342

342. A good 18 carat yellow topaz and diamond three stone ring in 18 carat mount. *Est. £800 - £1000.*

343. An unusual brass vesta in the form of a bust on pedestal base. *Est. £50 - £80.*

344. A string of amber beads weighing approx. 75 grams. *Est. £50 - £80.*



345

345. An attractive cranberry glass scented bottle decorated with flowers and leaves and a hinged brass top. *Est. £30 - £50.*

346. A cranberry glass hinged top scented bottle with embossed decoration. *Est. £30 - £50.*

347. An attractive porcelain scented bottle decorated with flowers and leaves. *Est. £30 - £50.*



348

348. A good quality shagreen hinged top etui with fitted interior and silver mounts. Est. £100 - £150.

349. An attractive French scroll decorated platinum eternity ring. Approx. 5.5 grams. Est. £600 - £700.

350. A pair of Antique high carat gold earrings inset with green stones. Est. £650 - £750.



351

351. A pair of stylish silver and paste cocktail earrings with matching drops. Est. £100 - £150.

352. A large Antique silver and paste brooch with matching drops. Est. £100 - £150.

353. A pair of gold and cornelian cuff links. Approx. 6.3 grams. Est. £50 - £80.

354. A pair of 9 carat oval rose gold cuff links engraved with initials. Approx. 9.2 grams. Est. £70 - £90.

355. An attractive pair of diamond and seed pearl cluster earrings with diamond top, set in platinum and gold. Est. £1500 - £2000.

356. A heavy pair of 9 carat cuff links with engine turned decoration. Approx. 8.3 grams. Est. £70 - £90.

357. A heavy pair of modernistic gold cuff links with palm tree decoration. Approx. 12.7 grams. Est. £120 - £150.

358. A pair of good quality silver engine turned Art Deco cuff links inset with lapis. Est. £20 - £30.



359

359. A good quality cabochon ruby signet ring in 18 carat gold with weave decorated mount. Approx. 13.1 grams. Est. £200 - £250.

360. An Antique carved ivory brooch together with a heart shaped pendant. Est. £20 - £30.

361. A stylish Danish enamelled brooch together with a butterfly wing brooch. Est. £20 - £30.

362. A small silver and blue enamelled Norwegian brooch of modernistic design. Est. £30 - £50.

363. A 9 carat keeper ring of modernistic design. Approx. 3.8 grams. Est. £30 - £50



364

364. An attractive sapphire and diamond five stone ring of five step cut stones in platinum claw mount. Est. £2500 - £3000.

365. An important pair of diamond cocktail earrings with baguette cut shoulders to tapering tops and graduated bases in claw mount. Est. £8500 - £9000.

Being sold on behalf of the executors.

366. A fine quality platinum graduated diamond necklace, the round brilliant cut diamonds in rub over mount, the largest stone weighing approx 1.05 carats graduating to a concealed clasp. Approx. 14 carats in total. Est. £15000 - £20000. (Pictured right).

367. An important diamond single stone mounted as a ring in platinum six claw mount accompanied with certificate stating it is of H colour VVS2 1.90 ct. Est. £10000 - £12000.





Watches

371. A small 9 carat rose gold fob watch with gilt dial. Approx. 25 grams. Est. £40 - £60.

372. A gent's 18 carat slim pocket watch with gilt dial and gilt loop top. Approx. 54.5 grams. Est. £80 - £120.

373. GUCCI: A lady's chrome wristwatch with pink MOP dial. Est. £80 - £120.

374. PIERCE: A good gent's steel chronograph wristwatch. Est. £280 - £320.

375. A good gold plated half hunter pocket watch with white enamelled dial. Est. £30 - £50.

376. A large silver Continental pocket watch with white enamelled dial decorated with a stag. Est. £100 - £150.

377. LONGINES: A good quality 9 carat wristwatch with silver dial. Est. £250 - £300.

378. A heavy open faced pocket watch with white enamel dial together with a watch chain. Est. £30 - £50.



379

379. A silver open faced pocket watch together with an albert chain. Est. £20 - £30.

380. A heavy silver long and short link watch albert set with bar. Est. £30 - £50.

381. JAEGER-LECOULTRE: A stylish stainless steel cocktail watch on leather strap, numbered to reverse 15910. Est. £150 - £200.

382. ELGIN: An unusual military watch with black enamelled dial, engraved to reverse AF US ARMY TYPE A11. Est. £150 - £200.



383

383. OMEGA: A gent's wristwatch with silver dial on expandable strap. Est. £100 - £150.

384. ROLEX: An unusual black faced military pocket watch with subsidiary seconds dial, numbered A11934. Est. £400 - £500.

385. A gent's military Waltham pocket watch with black dial and subsidiary seconds dial. Est. £60 - £80.

386. A bag containing four various silver open faced pocket watches. Est. £150 - £200.

387. ELGIN: A silver open face pocket watch with white enamelled dial. Est. £30 - £50.

388. J W BENSON: A silver open face pocket watch with white enamelled dial and subsidiary seconds dial. Est. £30 - £50.

389. A gent's silver mid-size pocket watch with white enamelled dial and subsidiary seconds dial. Est. £30 - £50.

390. A group of three Antique gold watch keys. Est. £30 - £50.

391. JAEGER-LECOULTRE: A stylish travelling clock with painted dial in fitted box. Est. £50 - £60.

392. ROLEX: A stainless steel oyster wristwatch with cream dial, Rolex winder and screw on back. *Est. £350 - £450.*

393. ROLEX: A gent's stainless steel Airking wristwatch with Rolex winder, screw on, flush fitting back. *Est. £700 - £900.*



394

394. A good silver travelling watch with engine turned decoration and silver dial. *Est. £150 - £200.*

395. A small gold fob watch with white enamelled dial and loop top. *Est. £30 - £50.*

396. A small attractive boat shaped diamond cocktail watch with engraved decoration and platinum mount. *Est. £100 - £150.*

397. A good stylish French sapphire and diamond cocktail watch with silver dial in engraved platinum case. *Est. £100 - £150.*



398

398. CARTIER: An attractive 18 carat wristwatch with silver dial on mesh strap and cabochon sapphire winder. *Est. £2000 - £2500.*



399

399. FRANCK MULLER: Chrono banker wristwatch, the multi-dial inset with luminant numerals on leather strap and engraved to reverse 'No. 66 7000 CC MB'. *Est. £2800 - £3200.*

400. A gent's cased sector wristwatch on stainless steel strap. *Est. £50 - £80.*

401. A large gent's verge pocket watch with white enamelled dial. By D. Edmonds of Liverpool. *Est. £100 - £150.*



402

402. ASPREY: A good quality wristwatch with gilt dial and date aperture in 18 carat on leather strap. Fitted box. Together with matching crested 9 carat cuff links. Approx. 18 grams. *Est. £400 - £600.*

Collectables,
China, Pictures and
Postcards



405. An attractive pair of hobnail cut table centres with wavy edge together with one other. *Est. £50 - £80.*

406. A good hobnail cut table centre with square base and wavy edge. *Est. £30 - £50.*

407. An attractive cut glass jug decorated with flowers and leaves. *Est. £30 - £50.*

408. A good quality large cut glass cooler with crimped rim to tapered base. *Est. £150 - £200.*

409. A pair of unusual novelty wooden juggling pins. *Est. £30 - £50.*

410. A good oak framed large dinner gong with stretcher base. *Est. £60 - £80.*



412

412. A pair of good quality agate tapering bowls on hardwood stands. *Est. £50 - £80.*

413. A good cased agate bowl of tapering form in fitted box. *Est. £30 - £50.*

414. A good hardstone and gold mounted cigarette box with hinged decoration. *Est. £30 - £50.*

415. An unusual Chinese ingot together with a green hardstone disc. *Est. £30 - £50.*

416. Two graduated hardstone tea bowls in leather case. *Est. £30 - £50.*

417. An unusual rustic wooden ten bottle crate. *Est. £25 - £30.*

418. A collection of three hard stone necklaces with tassel drops. *Est. £30 - £50.*

419. A group of three good yellow stone necklaces with tassel decoration. Untested. *Est. £80 - £120.*

420. A graduated string of amber type beads with tassel drop, together with one other. Untested. *Est. £80 - £120.*

421. An unusual string of hard stone beads with gold drop, together with a string of amber type beads. Untested. *Est. £50 - £80.*

432. A good pair of hardwood Chinese figures with bird decoration. *Est. £120 - £150.*



433

433. A well carved gold mounted jade pendant with loop top. *Est. £100 - £150.*

434. A late 18th century carved ivory bodkin case with lift off cover. *Est. £80 - £120.*

435. An attractive oval miniature of a boy with blue background. *Est. £20 - £30.*

436. An etched ruler together with a paper holder etc. *Est. £20 - £30.*

437. A pair of good aesthetic book ends decorated with flowers and leaves. *Est. £150 - £200.*

438. A good carved tribal figure on textured base. *Est. £40 - £60.*

439. A large carved immortal figure on carved base. *Est. £40 - £60.*

440. A cased set of hardstone chopsticks and stands in fitted box. *Est. £20 - £30.*

441. A pair of Japanese plates with bird decoration together with a figure of a warrior. *Est. £20 - £30.*

442. Good quality ivory and gold mounted binoculars in tapered green leather case. *Est. £60 - £80.*



443

443. A good quality gilded jewel case, the frame heavily decorated with flowers and leaves on bracket feet. *Est. £350 - £400.*

444. A heavily carved box decorated with monkeys, and a crocodile lift off cover. *Est. £50 - £60.*



445

445. A good quality copper jug with unusual pouring lip and tapering sides. *Est. £30 - £50.*



446

446. A good inlaid Islamic games set, the body with hinged mount and fitted interior. *Est. £100 - £150.*

447. An unusual carved tribal mask with textured finish. *Est. £20 - £30.*

448. A large unusual tapestry mounted on hardwood stand of Oriental design with swinging monkeys. *Est. £100 - £150.*

449. A small silver bladed and MOP fruit knife with etched decoration. *Est. £10 - £15.*

450. A small oval miniature of a gent in ivory frame with floral decoration. *Est. £30 - £50.*



451

451. A brass mounted rectangular miniature of figures decorated with flowers and leaves. *Est. £40 - £60.*

452. A rectangular gilded miniature of a religious scene. *Est. £40 - £60.*

453. A small boxed hard stone figure of a bird on carved base. *Est. £30 - £50.*



454

454. A carved scent bottle with silver gilt stopper / spoon. *Est. £100 - £150.*

455. An unusual metal foot warmer, the body decorated with birds and flowers and plank top. *Est. £20 - £30.*

456. A pair of 1914 / 1918 war medals. 207607 Gunner E J Leach RA. *Est. £30 - £50.*

457. A small mechanical toy in the form of a motor cyclist. *Est. £30 - £40.*

458. A mechanical toy in the form of a fire engine. *Est. £20 - £30.*

459. An electronic Batman pinball machine. *Est. £20 - £30.*

460. A cased Merit Dan Dare electronic space control radio station. *Est. £20 - £30.*

461. A pair of Staffordshire dogs with gilt leads. *Est. £20 - £30.*



462

462. A group of old teddy bears. *Est. £30 - £50.*

463. An old Royal Automobile club learner sign 'L'. *Est. £40 - £60.*

464. A large green and yellow enamelled BP sign. *Est. £40 - £60.*



465

465. An onyx and brass mounted clock with gilt decoration on bracket feet. *Est. £60 - £80.*



466

466. A French brass clock by LeRoy decorated with flowers and scrolls. *Est. £40 - £60.*

467. An Edwardian inlaid wall clock with white enamelled dial. *Est. £60 - £80.*

468. A large glass sweet dish with lobed body and lift off cover on pedestal base. *Est. £20 - £30.*

469. Two Antique papier-mâché miniature boxes. *Est. £30 - £50.*

470. A French artillery helmet mounted with a grenade. *Est. £20 - £30.*

476. A stylish chrome lamp with a panelled shade and push button switch. *Est. £40 - £60.*

477. An attractive Royal Worcester plate painted with fruit and gilt rim. By Sibley Lewis. *Est. £30 - £50.*

478. An attractive Royal Worcester oval dish with gilt border. Signed R. Bowker. *Est. £30 - £50.*



479

479. A small Royal Worcester sugar bowl with gilt interior, attractively painted with fruit. Signed S. Wood. *Est. £30 - £50.*

480. An attractive pair of ironstone plates decorated with flowers and leaves. *Est. £30 - £50.*

481. An unusual carved scent bottle with silver gilt mount. *Est. £30 - £50.*



482

482. A good quality Antique carved ivory card case with lift off cover. *Est. £100 - £150.*

483. A well carved Antique letter opener decorated with scrolls and figures. *Est. £40 - £60.*

484. A pair of attractive late Victorian gilded vases decorated with flowers and birds. *Est. £30 - £50*

485. An unusual Antique novelty ivory calendar / seal with turned decoration. *Est. £30 - £50.*

486. Sotheby's catalogue: The Jewels of The Duchess of Windsor. Hardback. *Est. £40 - £60.*



487

487. A good cased set of three 18 carat gold mounted badges of sealed pattern of The Bahrain Defence Force, together with three gilt buttons. *Est. £250 - £300.*

488. A good quality cased miniature of a gent in leather hinged case engraved with flowers and scrolls. *Est. £100 - £150.*

489. A stylish pair of copper and brass baluster shaped vases on pedestal base. *Est. £80 - £100.*

490. A pair of good cloisonné vases together with matching bowl of floral design. *Est. £80 - £100.*

491. A small model of a motor cruiser with painted hull and varnished deck. *Est. £40 - £60.*

492. A glass cased model of a boat in rough seas. *Est. £40 - £60.*

493. A large model of a paddle steamer on stand. *Est. £40 - £60.*

494. An attractive pair of stylish bedroom chairs painted with flowers and tapestry seats on turned supports. *Est. £20 - £30.*

495. A stylish WMF sweet dish mounted with a lady in flowing dress and flower mounts. *Est. £50 - £80.*

496. An unusual metal conservatory heater mounted with copper lamp on hairy feet. *Est. £40 - £50.*

497. Old blue and white plates etc. *Est. £20 - £30.*

498. A pair of Staffordshire figures with green background. *Est. £30 - £50.*

499. An attractive blue ground dessert set with floral decoration. *Est. £30 - £50.*

500. An attractive ironstone water jug with rope twist decoration. *Est. £20 - £30.*

501. Two tall Canton vases with floral decoration. *Est. £40 - £60.*

502. An unusual brass centrepiece in the form of a coal mining scene on oak supports. *Est. £50 - £80.*

503. A good carved card case with leaf decoration. *Est. £30 - £50.*

504. A small domed case on ebony base. *Est. £20 - £30.*

505. A boxed set of twelve agate handled knives with engraved blades. *Est. £50 - £60.*

506. A well carved rectangular gilt mirror with leaf decoration. *Est. £50 - £80.*

507. A pair of attractive Mary Gregory cranberry glass vases. *Est. £30 - £50.*

508. A heavy embossed jug decorated with snarling beasts and lift off cover. *Est. £30 - £50.*

509. A large oak smokers' cabinet with plated mounts and fitted interior. *Est. £50 - £80.*



510

510. A good Tunbridge tea caddy with floral decoration. *Est. £100 - £150.*

511. A good quality glass mounted jewellery display cabinet with hinged top and fitted interior. *Est. £100 - £150.*

512. Two good brass mounted jardinières decorated with animals. *Est. £100 - £150.*

513. A pair of Staffordshire dogs with gold decoration. *Est. £20 - £30.*



514

514. An attractive cranberry glass oil lamp decorated with flowers and leaves. *Est. £150 - £200.*

515. A good set of Waterford crystal glasses on tapering supports. *Est. £150 - £200.*



516

516. A good quality 10 'airs' musical box, the hinged rosewood top attractively decorated with flowers and leaves on bracket feet. Approx. 64 cms long. *Est. £800 - £1000.*

517. An unusual walking stick in the form of a duck with copper mount. *Est. £20 - £30.*

518. Wall hanging friesian cow head with mosaic detailing. *Est. £60 - £80.*

519. An unusual wooden handle mounted with a small cast iron hook. *Est. £20 - £30.*



520

520. A good large hardwood figure of a hippopotamus with textured body. *Est. £40 - £60.*



521

521. Two cold bronzes of animals on matching bases with textured bodies. *Est. £30 - £50.*



522

522. A group of three papier-mâché boxes together with two Antique porcelain boxes. *Est. £30 - £50.*

523. A rose quartz figure of a toad on hardwood base together with a carved Buddha. *Est. £30 - £50.*

524. A pair of attractive gilt pedestal ewers on stand decorated with birds. *Est. £30 - £50.*

525. A Victorian cabochon garnet stick pin in rope twist frame and fitted box. *Est. £20 - £30.*

526. Two Antique decorated Chinese vases of baluster form decorated with flowers and leaves. Slight damage. *Est. £30 - £50.*

527. A good Chinese blue and white butter dish on stand decorated with Oriental scenes. *Est. £30 - £50.*



528

528. A decorative Imari bowl mounted with numerous flowers and leaves. *Est. £80 - £100.*

530. A good set of four decorative cabinet cups mounted with flowers and gilding. *Est. £20 - £30.*

531. An attractive garniture of three Continental figures heavily decorated with flowers and gilding. Slight damage. *Est. £30 - £50.*

532. An unusual key to "Crossing gates of Colyford". *Est. £30 - £50.*

533. A small collection of early English and other decorative china. *Est. £20 - £30.*

534. An early Royal Worcester decorative cup together with an Oriental vase, cloisonné etc. *Est. £20 - £30.*

535. An early blue and white sauce boat decorated with flowers and leaves together with an Oriental vase. Slight damage. *Est. £30 - £50.*

536. An attractive Antique Chinese cabinet cup decorated with butterflies and flowers, outstretched borders and cut corners. *Est. £50 - £80.*

537. A pair of blue and white Chinese plates decorated with birds and figures. *Est. £40 - £60.*

538. Two Antique famille rose plates decorated with flowers and figures. Slight damage. *Est. £30 - £50.*

539. A Royal Air Force insignia mounted in a brass frame. *Est. £30 - £50.*

540. A pair of Satsuma baskets attractively decorated with figures on a gold background. *Est. £50 - £80.*

541. A Continental hardwood handmade chair with large rivets on turned supports and bow back. *Est. £40 - £60.*

542. An attractive Royal Tuscan fine bone china

tea service with floral decoration. *Est. £20 - £30.*

543. A Georgian mahogany tea caddy with string inlay and fitted interior. *Est. £30 - £50.*

544. A small collection of Antique blue and white and other chinaware. *Est. £20 - £30.*

545. TIFFANY & CO: A good cased pen in velvet sleeve. *Est. £40 - £50.*

546. A good framed sampler decorated with animals. Dated 1774. *Est. £40 - £60.*

547. A large gilt framed sampler decorated with trees and flowers. *Est. £40 - £60.*

548. A framed rectangular sampler of oval design decorated with flowers and leaves. Dated 1802. *Est. £30 - £50.*

549. A framed and glazed pair of rectangular Chinese pictures. *Est. £50 - £80.*

550. A set of four unusual framed and glazed pictures depicting school signs. *Est. £30 - £50.*



551

551. An attractive rectangular silk embroidered sampler in the form of a flower. *Est. £30 - £50.*

552. A pair of attractive oval silk miniatures of lady's. *Est. £40 - £60.*

- 553.** A small tortoiseshell mounted hatpin together with a silver fishing fly. *Est. £30 - £40.*
- 554.** An Antique black enamelled scent bottle mounted with romantic scene and hinged top. *Est. £100 - £150.*
- 555.** A good stick barometer with carved decoration by J Stewart of London. *Est. £100 - £150.*
- 556.** An attractive gilt mirror with scroll and swag decoration. *Est. £30 - £50.*
- 557.** A large white painted enamelled school sign. *Est. £20 - £30.*
- 558.** Three framed and glazed advertising posters. *Est. £30 - £50.*
- 559.** An unusual lustre glass vase, the mount decorated with pewter, flowers, leaves and semi-precious stones. *Est. £30 - £50.*
- 560.** A stylish lamp in the form of a slender naked lady with outstretched arms and stepped base. *Est. £30 - £50.*
- 561.** A good glass hobnail cut scent bottle with silver rim. Birmingham. By C&M. *Est. £20 - £30.*
- 562.** An attractive Royal Worcester gilt decorated ewer with wavy edge. *Est. £40 - £60.*
- 563.** A rectangular gilt framed mirror with bevelled edge. *Est. £30 - £50.*
- 564.** A silver mounted collectors spoon, ashtray etc. *Est. £20 - £30.*
- 565.** A group of good early Royal and other postcards. *Est. £80 - £100.*
- 566.** An attractive Royal Crown Derby old Imari tea service consisting of: cups, saucers, teapot, cream jug, sugar basin, side plates and platter. 1128 pattern. *Est. £100 - £150.*
- 567.** A set of three Royal Crown Derby vegetable terrines with gilded decoration numbered 251. *Est. £40 - £60.*
- 568.** A good set of twelve Royal Crown Derby dinner plates with gilded decoration numbered 1128. *Est. £80 - £100.*
- 569.** A set of twelve Royal Crown Derby dessert plates numbered 1128 XL. *Est. £60 - £80.*
- 570.** A set of twelve Royal Crown Derby tea plates with gilded decoration numbered 1128. *Est. £50 - £80.*
- 571.** A good set of twelve Royal Crown Derby Imari pattern soup cups and saucers numbered 1128. *Est. £80 - £100.*
- 572.** A good Royal Crown Derby coffee pot terrine and sauce boat on stand numbered 1128. *Est. £30 - £50.*
- 573.** A good pair of Royal Crown Derby oval meat plates numbered 1128. *Est. £40 - £60.*
- 574.** An attractive Royal Crown Derby dressing table jar and cover together with matching pot numbered 1128. *Est. £20 - £30.*
- 575.** An attractive set of eleven (plus eleven) Royal Crown Derby coffee cups and saucers numbered 1128. *Est. £80 - £120.*
- 576.** An attractive set of six Wedgwood plates decorated with flowers and leaves. *Est. £30 - £50.*
- 577.** A set of six Continental silver peppers marked sterling in fitted box. *Est. £25 - £35.*
- 578.** Royal Doulton Bunnykins: "The Shipmates Collection". Six figures and matching stand. *Est. £50 - £80.*

579. An old wooden and metal framed pushchair. *Est. £30 - £50.*

580. A small brass mounted stick stand on square base. *Est. £20 - £30.*

581. A pair of Wedgwood Chinese legend vases and covers. *Est. £50 - £80.*

582. An extensive EPNS cutlery service with reeded decoration. *Est. £40 - £60.*



583

583. A large framed Union Jack flag. *Est. £40 - £60.*

583A. A good cast iron ship's trunk with panelled body and brass handles. *Est. £30 - £50.*

584. A pair of stylish pictures of modernistic design. *Est. £50 - £80.*

585. A set of five unusual Coca-Cola advertising pictures in various colours. *Est. £30 - £50.*



586

586. An stylish framed and glazed picture of modernistic design. *Est. £100 - £150*

587. MOLINARI: A limited edition framed and glazed picture. *Est. £60 - £80.*

588. A good framed poster of modernistic design. *Est. £40 - £60.*

589. Four framed and glazed Alfred Wallis exhibition posters together with two larger examples. *Est. £40 - £60.*

590. Two framed and glazed modernistic harbour scenes of high relief. *Est. £40 - £60.*

591. A framed and glazed picture of an Oriental harbour scene. Signed. *Est. £60 - £80.*



592

592. After David Teniers. The Village Scene, unsigned, oil on board. Approx. 21cm x 28cm. *Est. £300 - £350.*



593

593. Circle of Philip Mercier, Young Girl with Globe, unsigned, oil on canvas. Approx. 35cm x 29cm. *Est. £300 - £400.*



594

594. Peter Blake: A limited edition signed print depicting fish on a green background with figures to base. 21/100. Approx. 77 cms x 51 cms. Est. £500 - £600.

595. A novelty silver pill box in the form of a sweet with textured handles and hinged top. Est. £20 - £30.

596. Two Whitefriars style vases with textured bodies. Est. £20 - £30.

597. An unusual walking stick mounted with a dog's head, gem set eyes and silver band. Est. £100 - £150.

598. A small embossed silver match case. Birmingham. Together with a plated sugar bowl. Est. £20 - £30.

599. A small collection of postcards of King George I and Queen Olga of Greece. Est. £60 - £80.

600. A collection of good postcards of King Constantine together with other postcards. Est. £100 - £150.



601

601. A small collection of postcards of the family of Prince Nicholas and Grand Duchess Elena Vladimirovna of Russia. Est. £50 - £80.

602. A signed photograph of HRH Princess Alexandra together with the Duchess of Kent. Est. £100 - £150.

603. A good pair of wooden mounted coal trucks with cast iron base. Est. £30 - £50.

604. An unusual novelty grinder together with a rice measure. Est. £20 - £30.

605. An unusual Belleek teapot with textured body and lift off cover. Est. £25 - £35.

606. A photograph of the Greek Royal Family dated 1964. Est. £50 - £80.

607. An attractive drawing of Princess Alice of Battenberg signed and dated 1923. Est. £100 - £150.

608. An unusual hardstone ingot of Oriental design in fitted box with lift of cover. Est. £50 - £80.

609. A small enamelled danger sign mounted with skull and crossbones. Est. £20 - £30.



Furniture

621. A pair of Chinese yellow ground plates with floral decoration. *Est. £50 - £80.*

622. A large early Chinese circular wall charger with crested centre, gilded border and gilt rim. Approx. 35 cms in diameter. *Est. £800 - £1200.*

623. Fly fishing and spinning book by F G Shaw together with one other. *Est. £20 - £30.*

624. An early 20th Century twin mastered pond yacht with plank effect deck. *Est. £100 - £150.*



625

625. An attractive inlaid heart shaped occasional table decorated with leaves and flowers on three supports. *Est. £80 - £120.*

626. A Globe Wernicke three stack lead glazed bookcase. *Est. £200 - £250.*

627. A Georgian shield back oak hall chair. *Est. £20 - £30.*

628. A Georgian Mahogany tilt top table on three spreading supports. *Est. £50 - £80.*

629. An oak rectangular refectory table. *Est. £30 - £50.*

630. A mahogany oval extending table on ball and claw feet together with a leaf. *Est. £50 - £80.*

631. A good Georgian carver chair, the back heavily decorated with scrolls and leaves on upholstered feet. *Est. £40 - £60.*

632. A good quality Continental mahogany glazed cabinet with two oval panels on pedestal base. *Est. £200 - £250.*

633. A good quality mahogany break front bookcase, the base fitted with drawers and cupboards. *Est. £350 - £400.*

634. A Georgian oak bureau with four tapering drawers and fall front. *Est. £50 - £80.*

635. An Antique mahogany pole screen with tapestry decoration. *Est. £30 - £50.*



636

636. A set of four Georgian mahogany dining chairs on tapering supports. *Est. £40 - £60.*

637. A good quality mahogany fold over card table on tapering supports. *Est. £80 - £100.*



638

638. A good Continental three drawer chest with wavy decoration. *Est. £50 - £80.*

- 639.** A good quality Edwardian sideboard with inlaid decoration and mirrored plate. *Est. £100 - £150.*
- 640.** A good quality Continental hall table on stretcher base. *Est. £200 - £250.*
- 641.** A good oak hinge top coffer mounted with three panels and carved decoration. *Est. £100 - £150.*
- 642.** A Victorian mahogany extending table. *Est. £100 - £150.*
- 643.** A good quality scroll end settee on brass casters. *Est. £50 - £80.*
- 644.** A good rosewood bookcase with brass string inlay. *Est. £100 - £150.*
- 645.** A good set of Brights of Nettlebed dining chairs with upholstered seats and turned decoration. *Est. £150 - £200.*
- 646.** A pair of Oriental carver chairs with hardwood seats. *Est. £30 - £50.*
- 647.** A oak marble top washstand on bun feet. *Est. £20 - £30.*
- 648.** A Georgian mahogany Pembroke table on tapering supports. *Est. £50 - £80.*
- 649.** A pine chest of five drawers on bun feet. *Est. £50 - £80.*
- 650.** A small oak four drawer music cabinet on bracket feet. *Est. £60 - £80.*
- 651.** A large pine sliding door bookcase on bracket feet. *Est. £30 - £50.*
- 652.** A good mahogany bow front chest of drawers on bun feet. *Est. £100 - £150.*
- 653.** An unusual Globe Wernicke corner three stack bookcase. *Est. £150 - £200.*
- 654.** A Globe Wernicke three stack bookcase. *Est. £150 - £200.*
- 655.** A Victorian walnut Davenport, drawers to side, hinge top and fitted interior. *Est. £80 - £120.*
- 656.** A Georgian chest of four drawers on bracket feet with brushing slide and brass handles. *Est. £100 - £150.*
- 657.** A Georgian mahogany single drawer side table on turned supports. *Est. £80 - £120.*
- 658.** An early Georgian chest of three drawers on bracket feet with brass handles. *Est. £100 - £150.*
- 659.** A pine dome top trunk on bracket feet. *Est. £40 - £50.*
- 660.** A small inlaid Edwardian whatnot. *Est. £60 - £80.*
- 661.** A good mahogany chest of five drawers on bracket feet. *Est. £60 - £80.*
- 662.** A good quality Continental pine corner cabinet of Georgian design. *Est. £100 - £150.*
- 663.** A mahogany bow front chest of five drawers on ball feet. *Est. £100 - £150.*
- 664.** A good mahogany display cabinet on ball feet. *Est. £100 - £150.*
- 665.** A Georgian oak Windsor chair. *Est. £50 - £80.*
- 666.** A set of four hoop back dining chairs on turned supports. *Est. £60 - £80.*

667. A heavy set of ten oak carved chairs.
Est. £100 - £150.

668. A good camphor wood trunk with brass handles. *Est. £250 - £300.*

669. A good walnut full front bureau on bracket feet. *Est. £80 - £120.*

670. A small oak hanging cupboard with carved decoration. *Est. £50 - £80.*

671. A large tapering pedestal with brass mount. *Est. £80 - £120.*

672. An oak shield back hall chair with scroll decoration. *Est. £20 - £30.*

673. A large silver framed mirror decorated with scrolls and leaves. *Est. £60 - £80.*

674. A large gilt mirror decorated with swags. *Est. £100 - £150.*

675. A good large patterned rug with blue grounds. *Est. £50 - £80.*

676. A good Georgian mahogany pad foot dining table. *Est. £100 - £150.*

677. A group of four Georgian mahogany dining chairs with slip in seats. *Est. £40 - £60.*

678. A good quality mahogany two part glazed bookcase, the top fitted with drawers, the base on bracket feet. *Est. £150 - £200.*

679. A good Georgian walnut chest on stand with reeded columns, bracket feet and brass handles. *Est. £400 - £500.*

680. A Grand piano made by John Broadwood & Sons. Circa 1926. Burr walnut casework. Approx. 162.5 cms. Model No. 55107. The piano was reconditioned in 1999 which included fitting a set of German (Abel) hammer heads. *Est. £200 - £300.*

681. A good upholstered scroll end settee.
Est. £50 - £80.

682. An old green enamelled sign.
Est. £40 - £60.

683. A good Antique four drawer bureau with fall front fitted interior and bracket feet.
Est. £200 - £300.

684. A good flame mahogany three door triple wardrobe heavily carved with flowers and leaves on pedestal base. *Est. £250 - £350.*



685

685. A good Antique stick back child's chair.
Est. £50 - £80.



679

TERMS AND CONDITIONS OF SALE

Whittons carries on business with bidders, buyers and all those present in the auction room prior to or in connection with a sale on the following general conditions and on such other terms, conditions and notices as may be referred to herein.

1. BIDDING PROCEDURES AND THE BUYER

a) Bidders are required to register their particulars prior to bidding and to satisfy any security arrangements before entering the auction room to view or bid. We do not accept bids from any person who has not completed and delivered to us one of our Bidding Forms. You will be asked for photographic proof of identity, residence and references. Bids will not be accepted if you fail to provide sufficient identification when asked to produce it. We may also ask for a deposit to be paid prior to bidding. We may refuse entry to a Sale to any person even if that person has completed a Bidding Form.

b) The maker of the highest bid accepted by the Auctioneer conducting the sale shall be the buyer at the hammer price and any dispute regarding a bid shall be made and settled at the Auctioneer's absolute discretion, and may reoffer the Lot during the course of the auction or otherwise. The Auctioneer shall act reasonably in exercising this discretion. The Auctioneer's decision is final.

c) Bidders shall be deemed to act as principals.

d) Once made no bid can be withdrawn.

e) Our right to bid on behalf of the seller is expressly reserved up to the amount of any reserve and the right to refuse any bid is also reserved.

2. INCREMENTS

a) Bidding increments shall be at the Auctioneer's sole discretion.

3. THE PURCHASE PRICE

a) The buyer shall pay the Hammer Price together with a premium thereon of 15% plus VAT on the premium at the rate imposed by law on all lots. Lots purchased online will incur an additional charge in the sum of 3% of the Hammer Price plus VAT at the rate imposed by law.

4. VALUE ADDED TAX

a) Where a lot is marked with an asterisk (*), VAT will be payable at the standard rate as imposed by law on the Hammer Price as well as being added to the buyer's premium.

b) Where a lot is marked with a double asterisk (**), VAT will be charged at a reduced VAT rate (currently 5%) to the gross price of that lot being the Hammer Price plus the buyer's premium.

c) Where no asterisk is marked against a lot, no VAT is payable on the Hammer Price, and is deemed to have been sold under the Auctioneer's Margin Scheme. VAT included within the premium is not recoverable as input tax.

5. PAYMENT

a) Your obligation to pay for a lot occurs when the Auctioneer's hammer has fallen in respect of the lot.

b) Immediately a lot is sold you will give to us, if requested, proof of identity and pay to us the total amount due in cash or in such other way as agreed by us. Any payments by

you to us may be applied by us towards any sums owing from you to us on any account whatever without regard to any directions of you or your agent, whether express or implied.

c) No cash payments will be accepted over £6000.00 (Six Thousand Pounds Sterling).

d) Payment is acceptable in cash, credit or debit card. A handling charge of 2% will be added to all purchases made by credit card. Payments made by debit card will incur no extra charge. Payment can be made by direct bank transfer into our bank account.

e) Payment of the purchase price and all other sums payable by you to Whittons must be made in the currency in which the sale was conducted within seven working days following the sale. Payment must be received in cleared funds by the seventh working day following the sale. Failure to provide cleared funds within this time may result in remedies being exercised as stated in condition 7.

6. TITLE AND COLLECTION OF PURCHASES

a) Ownership of the lots purchased shall not pass to the buyer until payment has been made in full to us of the total amount due, to include all premiums, charges and postal costs where applicable, and received in cleared funds by Whittons.

b) Responsibility of the lot passes to the buyer at the fall of the Auctioneer's hammer. The seller will no longer be responsible for the lot thereafter. The buyer will indemnify the seller and keep the seller fully indemnified from and against all claims, proceedings, costs, expenses and losses arising in respect of any injury, loss and damage caused to the lot after the fall of the Auctioneer's hammer until the buyer obtains full title to it.

c) You shall, at your own risk and expense take away any lots that you have purchased and paid for in full, not later than seven working days following the sale or upon the clearance of any cheque used for payment after which you shall be responsible for any removal, storage and insurance charges. No purchase can be claimed or removed until it has been paid for in full.

d) Title to the lot remains in and is retained by the seller until payment has been made in full to us of the total amount due, to include all premiums, charges and postal costs where applicable, and received in cleared funds by Whittons.

e) All items are held at the risk of the buyer. If they are not removed within fourteen working days of the sale the auctioneers will instruct a local carrier to remove them for storage. The buyer will be responsible for paying all charges incurred and for making arrangements in advance for the removal of items from their store after payment of their charges and on production of our receipt for the items.

7. REMEDIES IN THE EVENT OF NON-PAYMENT OR PURCHASES NOT BEING COLLECTED ON TIME

If any lot is not paid for in full and taken away in accordance with these conditions or if there is any other breach of these conditions, we, as agent for the seller and on our own behalf, shall at our absolute discretion and without prejudice to any other rights we may have be entitled to exercise one or more of the following rights and remedies: To proceed against you for damages for breach of contract;

a) To rescind the sale of that lot and/or any other lots sold by us to you;

b) To resell the lots (by auction or private treaty) in which case you shall be responsible for any resulting deficiency in the total amount due (after crediting any part payment and adding any resale costs). Any surplus so arising shall belong to the seller;

c) To remove, store and insure the lot at your expense and, in the case of storage, either at our premises or elsewhere;

d) To charge interest at a rate not exceeding 1.5% per month on the total amount due to the extent it remains unpaid for more than seven working days after the sale;

e) To retain that or any other lot sold to you until you pay the total amount due

f) To reject or ignore bids from you or your agent at future auctions or to impose conditions before and such bids shall be accepted.

g) To apply any proceeds of sale of other lots due in future becoming due to you towards the settlement of the total amount due and to exercise a right to possession (lien) of any of your property in our possession for any purpose until the debt due is satisfied.

h) We shall, as agent for the seller and on our own behalf pursue these rights and remedies only so far as is reasonable to make appropriate recovery in respect of breach of these conditions.

8. THIRD PARTY LIABILITY

All members of the public enter our premises at their own risk. They must make themselves aware of all security and fire arrangements in the building and to note the layout of the accommodation. Accordingly neither the Auctioneer nor our employees or agents shall incur any liability for death or personal injury (except as required by law by reason of our negligence) or similarly for the safety of persons visiting prior to or at a sale.

9. RIGHT TO REFUSE ENTRY

Whittons shall have the right at our discretion, to refuse admission to our premises or attendance at our auctions by any person.

10. COMMISSION BIDS

We will, if so instructed, execute bids on a buyer's behalf. The bid must be received by us no later than one hour prior to the commencement of the sale for which the lot is being sold. The bid must be clearly written or typed, and must have the full name, address and telephone number of the person bidding, and signed by the person making the bid. Neither the Auctioneer nor our employees shall be held responsible for any failure to do so save where such failure is unreasonable. Where two or more commission bids are received at the same price, the Auctioneer reserves the right and absolute discretion to choose which bid shall prevail. It will be assumed that the prospective buyer has carefully inspected the lot and has satisfied themselves as to its condition prior to leaving the commission bid. No bids can be retracted once the item has been sold.

11. WARRANTY OF TITLE AND AVAILABILITY

The seller warrants to the auctioneers and the buyer that the seller is the true owner of the property consigned or is properly authorised by the true owner to consign it

WHITTONS AUCTIONS

for sale and is able to transfer good title to the property free from any third party claims.

12. AGENCY

The auctioneers normally act as agent only and disclaim any responsibility for default by sellers or buyers.

13. TERMS OF SALE

The seller acknowledges that Lots are sold subject to the stipulations of these conditions in their entirety and on the terms of consignment as notified to the consignor at the time of the entry of the lot.

14. DESCRIPTIONS

Whittons will not be held responsible for misrepresentation, and any wording or description either spoken written discussed published or otherwise shall not form the basis of any contract. Items are described as opinion only, and whilst due diligence is taken to make accurate descriptions, it may be impracticable to ensure accuracy in its entirety. All items are therefore sold as seen and prospective buyers must inspect view and take their own independent expert advice should they so wish before bidding on any item in any sale and must satisfy themselves as to the accuracy of any description applied to a lot. Prospective buyers bid on the understanding that representations or statements as to authorship genuineness origin date age provenance condition size shape weight colour etcetera are opinions only. Subject to the foregoing neither we the auctioneer nor our employees or agents nor the seller accept liability for the correctness of such opinions and all conditions and warranties, whether relating to description, condition or quality of lots, express, implied or statutory, are hereby excluded. Private treaty sales made under these conditions are deemed to be sales by the auction for purposes of consumer legislation.

Notwithstanding this condition any Lot which proves to be a deliberate forgery as defined may be returned to us by you within 14 days of the auction provided it is in the same condition as when bought, and is accompanied by particulars identifying it from the relevant catalogue description and a written statement of defects. If we are satisfied from the evidence presented that the Lot is a deliberate forgery we shall refund the money paid by you for the Lot including any buyer's premium provided that

a) if the catalogue reflected the accepted view of scholars and experts as at the date of sale or

b) you personally are not able to transfer a good and marketable title to us, you shall have no rights under this condition.

The right of return provided by this Condition is additional to any right or remedy provided by law or by these Conditions of Sale.

15. ONLINE BIDDING

Whittons may offer an online bidding service via www.the-saleroom.com for bidders who cannot attend the sale. In completing the bidder registration on www.the-saleroom.com and providing your credit card details and unless alternative arrangements are agreed with Whittons you:

a) authorise Whittons if they so wish to charge the credit card given in part or full payment including all fees for items successfully purchased in the auction via www.the-saleroom.com and

b) confirm that you are authorised to provide these credit card details to Whittons through www.the-saleroom.com and agree that Whittons are entitled to dispatch the goods to the card holder name and card holder address provided in fulfilment of the sale.

Please note that any lots purchased via the-saleroom.com live auction service will be subject to an additional 3% commission charge + VAT at the standard rate imposed on the hammer price. Buyers registering to bid through www.the-saleroom.com must submit credit/debit card details to register. Whittons will take a deposit of maximum £500.00 sterling from the registered credit / debit card at the discretion of the auctioneer. If the buyer is unsuccessful this deposit will be refunded. If successful the deposit will be deducted from the final invoice. The deposit will be subject to variables in exchange rates and bank charges that the buyers' bank might levy. The buyer will be liable for such charges.

16. CHEQUES

Cheques will only be accepted for payment at the auctioneer's discretion. No purchases will be removed from the saleroom unless cleared funds have been received by us. Any prospective purchasers who wish to pay by cheque must inform the auctioneers at least 7 working days before the sale. It will be at the auctioneer's discretion whether to take a cheque in lieu of prospective purchases prior to the sale and allowing for clearance of the cheque. If you are later unsuccessful in your purchase, the amount of your cheque will be refunded. Payment in cheque will not be acceptable on the day of the sale if prior arrangement has not been made with the auctioneer but if you wish to pay using this method then your purchases will be withheld until full clearance of the cheque has been granted. Only authorised payments by card or cash will be allowed to allow removal of goods on sale day.

17. TELEPHONE PAYMENTS

Payments will not be accepted if made at the telephone for invoices of more than £300.00 unless the buyer is known to the auctioneer. Card payments can be made in person or by bank transfer cash up to £6000.00 (Six Thousand Pounds Sterling).

18. SELLER'S COMMISSION AND CHARGES

Commission is charged at 15% plus VAT at the standard rate on the hammer price. Items which sell for less than £20.00 will incur a commission charge of £5.00 plus VAT at the standard rate. No charge will be made for items which fail to sell. Withdrawn lots may incur an administration charge if withdrawn once the item has been published for sale. No charges are made for catalogue illustration photography or advertising unless special illustration photography or advertising is deemed necessary and not without the consent of the vendor. A charge of £3.00 per item will be charged per item for each item that requires electrical testing.

19. RESERVES

Items will only be accepted with reserve which, in the auctioneer's opinion, are likely to realise at least £20.00 or more. Any item worth less than this value will be deemed to be entered for sale without reserve. Any items which are taken with a reserve price will be accepted on the basis that the auctioneer will have discretion to sell that item for 10% less than the reserve if a buyer at that price exists on the day. Whittons can

refuse to accept any item for sale where, in the auctioneer's opinion, the reserve price suggested by the seller is too high and/or the item would not sell.

20. SELLER'S CONDITIONS

a) All sellers must sign the declaration confirming conditions of sale on the receipt which is given to you when you submit goods to us for sale. All items handed over to us are assumed to be given to us for the purpose of entering those lots for sale by auction.

b) All sellers must sign to confirm that they are the true owners of the goods entered for sale and that they have legitimate title to those goods free of any encumbrance and free from any third party or that they have authority to dispose of the goods on behalf of the true owner and are able to transfer good and marketable title to the property free from any third party claims.

c) All goods entered for sale must comply with all safety regulations under the Consumer Protection Act and the Furnishing Fire / Safety Regulations 1988.

d) The seller authorises Whittons to deduct commission at the rates quoted and by the signing the form, the seller is deemed to have accepted the terms and conditions of sale.

e) The seller has a duty to disclose all defects restorations or alterations to the goods at the time they are entered for sale and is duty bound to bring such defects restorations or alterations to auctioneer's attention in writing. Failure to do so notwithstanding any description of the goods given by the auctioneers can result in the sale being rescinded and the seller being responsible for all allied costs incurred by the auctioneer and the buyer.

f) The seller warrants in respect of any item of mechanical or electrical equipment that it is:

a. in working order

b. reasonably fit for the purpose for which it is designed or adapted

c. that it can be used safely and without risk of causing injury or damage and

d. will indemnify Whittons against any loss or damage suffered in consequence of any breach of the above warranty and undertaking.

g) The Vendor gives Whittons full and absolute right to photograph and illustrate any lot placed with them for sale and to use such photographs and illustrations at any time at their absolute discretion whether or not in connection with the auction.

h) Sellers selling any assets of their business must disclose whether they are registered for value added tax (VAT) at the time the goods are presented for sale and disclose the VAT registration number and indicate clearly whether the goods are to be sold under the margin scheme and where this is the case, VAT will not be recoverable by the seller.

English law applies to the interpretation of these Conditions.





THE FINE ART AUCTION ROOMS

DOWELL STREET · HONITON · DEVON EX14 1LX

01404 517000 · 01392 345454

INFO@WHITTONSAUCTIONS.CO.UK

WWW.WHITTONSAUCTIONS.CO.UK