



**SILVER, JEWELLERY, WATCHES,
ANTIQUÉ FURNITURE AND
COLLECTABLES AUCTION**

2nd June 2016

Cover illustrations

Front: Lot 210

Inside Front: Lot 70

Inside Back: Lot 473

Back: Lot 405





SILVER, JEWELLERY, WATCHES, ANTIQUE FURNITURE AND COLLECTABLES AUCTION

THURSDAY 2ND JUNE 2016

Commencing at 10.00 am

Live Internet bidding via

the-saleroom.com and **invaluable**

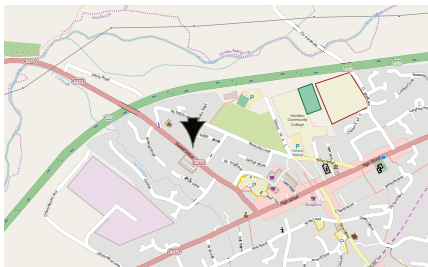
EACH LOT IS ILLUSTRATED ONLINE

VIEWING TIMES:

Saturday 28th May 10.00 am - 1.00 pm

Sunday 29th May 10.00 am - 1.00 pm

Tuesday 31st May and Wednesday 1st June 9.30 am - 4.30 pm



THE FINE ART AUCTION ROOMS
DOWELL STREET
HONITON
DEVON
EX14 1LX
01404 517000 · 01392 345454
info@whittonsauctions.co.uk
www.whittonsauctions.co.uk

ALL COMMISSION BIDS AND TELEPHONE
BIDS MUST BE REGISTERED WITH THE
AUCTIONEERS BY 4.30 PM THE DAY BEFORE
THE SALE

YOU MUST REGISTER TO BID.
PHOTOGRAPHIC IDENTIFICATION REQUIRED.

A 10% DEPOSIT OF THE LOWER ESTIMATE
OF THE LOT(S) ON WHICH YOU WISH TO
BID IS REQUIRED FOR ALL TELEPHONE BIDS.
FORMS ARE AVAILABLE TO DOWNLOAD
FROM OUR WEBSITE.

PHOTOGRAPHIC ID REQUIRED FROM
ANYONE WISHING TO VIEW THE JEWELLERY.

BUYERS PREMIUM 15% + VAT



Order of sale

Thursday 2nd June at 10.00am

Silver 1 – 146

There will be a 20 minute break.

Jewellery & Watches 147 – 435

There will be a 20 minute break.

Antique Furniture, Porcelain and
Collectables 436 - 578

Silver



WHITTONS AUCTIONS

1. A large rectangular card case with crested front. London. By SM. Approx. 60 grams. Est. £40 - £60.

2. A Continental unusual necklace mounted with figures and swags. Approx. 79 grams. Est. £30 - £40.

3. David Andersen. A silver mounted dagger in leather sheath and fitted box. Est. £30 - £40.



4

4. A good quality silver gilt purse with engraved decoration and turquoise and enamelled front. Est. £180 - £220.

5. A silver gilt scent / vinaigrette bottle with etched body and pierced thumb piece. Slight damage. Est. £60 - £80.



6

6. A good set of scent bottles with enameled Italian lake scene. Signed APP. Birmingham. By DM&Co. Est. £300 - £350.

7. An attractive gold top enamelled and cut glass dressing table jar. Birmingham. By BB&F. Est. £70 - £80.

8. A pair of Georgian Irish egg cups on reeded supports. Est. £70 - £80.

9. An attractive silver mounted reeded jug together with matching beakers. London 1889. By SS&D. Est. £200 - £250.



10

10. A good quality silver and MOP dressing table box on bun feet, the top decorated with cherubs and scrolls. Chester 1905. Est. £180 - £220.

11. A good large silver mounted vase. Birmingham 1902. By WS. Est. £100 - £120.

12. A good heavy George III silver mug. London 1764. Approx. 234 grams. By JS. Est. £180 - £220.

13. A good quality circular dressing table bottle with tortoiseshell lid. Birmingham 1924. By WC&D. Est. £60 - £80.

14. An attractive heart shaped box with circular Wedgwood panel. Chester 1903. By C&C. Est. £140 - £160.

15. A good Georgian nutmeg grater with detachable base, screw on cover and bright cut decoration. Birmingham 1799. By J. Taylor. Est. £200 - £250.

16. A group of four silver mounted embossed top dressing table jars. Est. £30 - £40.

17. A small oval embossed pen tray with crimped rim. Birmingham. By JJ. Approx. 85 grams. Est. £30 - £40.



18

18. A pair of good embossed hairbrushes decorated with figures. London. By FB. Est. £20 - £30.

19. A pink enamelled three piece brush set. Birmingham. By AC. Est. £20 - £30.

20. A rectangular crimped edge dressing table box decorated with flowers and leaves. Birmingham. By D&B. Approx. 82 grams. Est. £30 - £40.



21

21. A good pair of pedestal sauce boats with beaded rim. Birmingham 1928. By H C Davis. Approx. 350 grams. Est. £250 - £300.

22. A heavy pedestal rose bowl with floral decoration. Sheffield 1904. By Henry Wilkinson. Approx. 312 grams. Est. £260 - £300.

23. A good quality heavy tea strainer with pierced terminal. Sheffield 1965. Approx. 52 grams. Est. £60 - £80.

24. A boxed set of six bean top coffee spoons. Birmingham 1923. Est. £30 - £40.

25. A good quality large snuff box with serpentine outline and bright cut floral decoration. Birmingham 1846. By E Smith. Approx. 105 grams. Est. £300 - £350.



26

26. A good set of wine labels for rum, brandy and hollands with floral decoration on suspension chain. London 1837. By Reilly & Storer. Est. £300 - £350.

27. An attractive blue enamelled ring box with hinged top. Birmingham 1927. Est. £150 - £200.

28. A heavy set of Continental fiddle pattern spoons. Approx. 220 grams. Est. £30 - £40.

29. A bag containing Georgian and other tea spoons. Approx. 152 grams. Various dates and makers. Est. £30 - £40.

30. A good bead edge OE patterned fork together with spoon and engraved sifter ladle. Approx. 219 grams. Est. £20 - £30.

31. A heavy set of Continental dessert forks together with a fiddle pattern spoon. Approx. 204 grams. Est. £30 - £40.

32. A silver cigarette case together with a wager cup, mount etc. Approx. 176 grams. Est. £30 - £40.

33. An embossed silver backed brush together with a mirror and button hook. Est. £20 - £30.

34. A silver mounted box together with a bottle sleeve and a sweet dish. Approx. 410 grams. Est. £50 - £60.

35. A collection of embossed silver top brushes and mirrors etc. Various dates and makers. Est. £30 - £40.

36. An American cut glass atomiser with silver collar. Est. £20 - £30.



37

37. A large good quality Victorian coffee pot with engraved decoration. London 1852. By William Hunter. Approx. 800 grams. Est. £400 - £450.

38. An unusual conjoining oil and vinegar bottle with silver collars. London 1927. Est. £90 - £110.



39

39. A Chinese export silver cream jug on pedestal base. By Zee Woo. Approx. 180 grams. Est. £150 - £200.

40. A Dutch plain christening beaker. By Gerritsen & Van Kempen. 1952. Approx. 60 grams. Est. £40 - £50.



41

41. A good Chinese cigar case with textured flower and gilt interior. Approx. 210 grams. Est. £200 - £250.

42. A rectangular brass Shakudo box decorated with birds and flowers. Approx. 154 grams. Est. £100 - £150.

43. A good large fiddle pattern basting spoon. London 1818. By SH&SR. Approx. 120 grams. Est. £100 - £150.

44. A pair of attractive circular bonbon dishes embossed with fruits and flowers. London 1892. By George Jackson. Approx. 196 grams. *Est. £200 - £250.*

45. A heavy silver basting spoon of fiddle pattern design. London 1843. By Charles Boyton. *Est. £140 - £180.*



46

46. A heavy pair of King's pattern fish servers with silver blades. Sheffield 1979. Approx. 345 grams. *Est. £160 - £180.*

47. A large vintage bell shaped inkwell with hinged top. Birmingham 1945. *Est. £100 - £120.*

48. A large oval sweet dish with pierced decoration embossed with flowers. Approx. 400 grams. Chester 1909. *Est. £300 - £350.*

49. A pierced bonbon dish on four supports with gadroon rim. Sheffield 1918. By Martin Hall. Approx. 349 grams. *Est. £170 - £200.*



50

50. A good pair of oval picture frames with reeded decoration on bracket feet. Approx. 17.5 cms high. Chester 1920. *Est. £250 - £300.*

51. A sterling rectangular picture frame on oak back. Approx. 18 cms across. *Est. £50- £60.*

52. A good rectangular silver frame with tortoiseshell inset on oak back panel. Approx. 19 cms high. Chester 1923. *Est. £150 - £200.*

53. A pair of attractive miniature heart shaped frames decorated with scrolls and leaves and velvet back. Approx. 8 cms high. Chester 1900. *Est. £120 - £150.*

54. A rectangular engine turned picture frame. Birmingham 1957. Approx. 14 cms high. *Est. £60 - £80.*

55. A rectangular picture frame with bow decoration and beaded border. Birmingham. Approx. 12.5 cms. *Est. £100 - £150.*



56

56. A rectangular plain picture frame with ribbon top and oak panel back. Approx. 18 cms tall. Birmingham. By EM&S. *Est. £80 - £100.*

57. An attractive Dutch picture frame decorated with doves, figures and floral decoration. Approx. 13.5 cms high. Est. £80 - £90.

58. A pair of good quality embossed picture frames with reeded and ball decoration. Birmingham. By D&F. Approx. 19 cms high. Est. £220 - £250.

59. A large rectangular Chinese picture frame with oak panelled back and velvet front. Approx. 22 cms high. Est. £70 - £80.

60. A large sterling picture frame with plain margins. Approx. 28.5 cms high. Est. £90 - £100.

60A. A silver oval embossed trinket box. London. By T&G. Est. £60 - £80.

60B. A rectangular embossed trinket box decorated with flowers and leaves. Chester. By BM. Est. £140 - £180.

60C. A silver and enamelled cigarette case with hinged mount. Est. £30 - £50.

60F. A small engine turned engraved compact with hinged mounts. London. Est. £30 - £50.

60G. A Continental silver and enamelled compact with fitted interior and velvet case. Est. £30 - £50.

60H. A small 15 carat thimble with engraved decoration. Chester 1906. By Edwin Harrop. Est. £200 - £250.

61. A good quality heart shaped mirror, with easel back, decorated with leaves and flowers. London. By WC. Approx. 28 cms high. Est. £300 - £350.

62. An attractive embossed rectangular dome top picture frame decorated with flowers. Approx. 19 cms across. Est. £200 - £250.

63. A stylish picture frame with reeded border and oak panelled back. Birmingham. By BB&DC. Approx. 20 cms high. Est. £150 - £200.

64. A tall embossed silver mounted picture frame decorated with flowers and scrolls. Approx. 23 cms high. Est. £200 - £250.



60D

60D. A good quality silver and tortoiseshell jewellery box with scroll decoration. London. By WH. Est. £180 - £220.

60E. An attractive engraved three piece christening set. Birmingham. By HC. Est. £80 - £100.



65

65. A pair of good pierced Dutch salts with swag decoration and BGLs. Est. £100 - £150.

66. An unusual George III OE straining spoon. London 1792. By Charles Hougham. Est. £320 - £350.

67. A heavy sugar caster with swirl and rope twist decoration. London 1901. By WW. Approx. 17.5 cms high. Approx. 206 grams. Est. £75 - £85.



68

68. A good pair of neoclassical candlesticks with shaped base. Approx. 22.5 cms tall. Sheffield 1901. By Elkingtons. Est. £400 - £450.

69. A small circular pin dish, inset with coin. Approx. 38 grams. Est. £20 - £30.

70. A large good quality chocolate pot with tapered sides and side handle. London 1963. By HP&LP. Approx. 845 grams. Est. £450 - £500.

71. A boxed set of six silver trefid spoons with lace back. London 1920. By Thomas Bradbury. Est. £60 - £80.

72. A pair of attractive heart shaped pin dishes with crimped rim. London 1892. Approx. 84 grams. Est. £90 - £100.

73. A silver mounted claret jug with hinged top. Birmingham 1910. By JG&S. Approx. 230 grams. Est. £230 - £250.

74. A silver Madeira wine label. Birmingham 1860. By JG. Est. £70 - £80.

75. A silver embossed sherry label decorated with flowers and vines. Birmingham 1860. By JG. Est. £70 - £80.

76. A sherry label decorated with vines and leaves. London 1846. By Barnards. Est. £70 - £80.

77. An unusual George III sherry label on ring mount. London 1799. By TT. Est. £130 - £150.

78. A small gin label on suspension chain. Birmingham 1890. Est. £50 - £60.

79. Six Georgian MOP mounted knives with Georgian silver blades. London. Est. £50 - £60.

80. An attractive Russian napkin ring engraved with horses and sleigh. Est. £50 - £60

81. A Georgian fiddle pattern cream ladle. Aberdeen. Est. £75 - £85.



82

82. An attractive Georgian miniature two handled porringer. London 1727. By GI. Est. £200 - £250.

83. A good quality Russian engraved cream jug, marked to handle. Approx. 85 grams. Est. £130 - £150.

84. A good pair of cast sugar nips decorated with flowers and leaves. London 1851. Est. £75 - £85.

85. An unusual brass Islamic box with hinged top. Est. £45 - £55.

86. Gay Hill Golf Club. A good set of four enamelled silver gilt buttons. Birmingham. By JAR. Est. £120 - £150.

87. An oval brass vesta case in the form of a rugby ball. Est. £40 - £60.



88

88. A good quality square shagreen inkwell with tapered sides and hinged top. Birmingham. By PJ&F. Est. £150 - £200.



89

89. ASPREY. A good quality paperweight mounted with an anchor and silver gilt serpent. London. Est. £300 - £350.

90. An early 17th Century dog nose spoon. Punchmark WS. Est. £170 - £200.

91. A Georgian coaster with turned wooden base and reeded side. Est. £150 - £200.

92. A heavy set of four Eastern pepper pots with ball decoration. Approx. 100 grams. Est. £50 - £60.

93. A heavy George III marrow scoop with double creasing. London 1798. By George Smith. Est. £180 - £220.

94. A pair of heavy fiddle pattern sauce ladles. London 1844. Est. £90 - £100.

95. A good quality oval shaped dish with pierced decoration, decorated with flowers and leaves. London 1901. By R. Pringle. Approx. 206 grams. Est. £140 - £180.

96. A stylish caddy spoon with trefid handle. Birmingham 1973. By HU. Est. £40 - £60.

97. Peter & Ann Bateman. A good set of bright cut teaspoons. London 1799. Approx. 70 grams. Est. £80 - £100.

98. A collection of Continental silver cutlery together with a pin dish. Approx. 138 grams. Est. £30 - £40.



99

99. An Antique silver mounted coconut cup. London 1881. Est. £200 - £250.

100. A glass mounted hip flask with screw on cover. London, by H&H. Est. £100 - £120.



101

101. A tortoiseshell tea caddy on bun feet with hinged lid. Est. £250 - £300.

102. Two Scottish bottom marked spoons. Edinburgh. 1766 and 1771. Est. £120 - £150.

103. A heavy Irish goblet with swag decoration. Approx. 250 grams. By WH. Est. £150 - £200.

104. Two boxed enamelled coins on chains. Est. £20 - £30.

105. A Chinese leaf decorated bottle with tapered stopper. Est. £60 - £80.

106. An attractive lighthouse caster with pierced decoration and BGLs. London 1901. By George Heath. Est. £200 - £250.



107

107. A small collectable silver miniature tea set on tray. Birmingham 1973. Approx. 66 grams. Est. £150 - £180.

108. A small cream jug with card cut rim on pedestal base. Birmingham 1900. Approx. 92 grams. Est. £80 - £90.

109. A heavy silver cigar case with hinged decoration and thumb piece. Chester. By JR&A Ltd. Approx. 162 grams. Est. £70 - £80.

110. A pair of silver scent bottles with hinged top. Birmingham. By LG&S. Est. £70 - £80.

111. Three various napkin rings of engraved decoration. Approx. 60 grams. Est. £30 - £40.

112. A good Georgian sugar bowl with chased decoration. Approx. 60 grams. Est. £30 - £40.

113. An unusual silver plated spoon warmer in the form of a shell on rocky base. Est. £100 - £120.

114. A good set of three hunting menu holders decorated with galloping horses and jockeys. Est. £500 - £600.

115. A Victorian Doulton Lambeth silicon ware jug with silver rim. London 1892. By Henry Brockwell. Est. £100 - £150.

116. A heavy silver sugar bowl and cream jug with bead decoration. London 1926. By Charles Boyton. Approx. 268 grams. Est. £150 - £200.

117. A heavy Portuguese cream jug with reeded border and hallmarked for Lisbon. Approx. 196 grams. Est. £150 - £200.

118. A good sauce boat with reeded rim and hoof feet. Approx. 156 grams. Birmingham 1934. Est. £80 - £90.

119. An attractive set of six Danish coffee spoons with matching sprung tongs and gilded handles. Approx. 92 grams. Est. £120 - £150.

120. A heavy fiddle and thread soup ladle. London 1897. Est. £170 - £200.

121. A heavy half fluted christening mug. London 1903. By GS. Est. £100 - £150.

122. A good plain hinged top vesta case. Birmingham. By WV. Approx. 30 grams. Est. £30 - £40.

123. A heavy George II half pint mug. London 1745. By JG&RG. Approx. 254 grams. Est. £100 - £150.



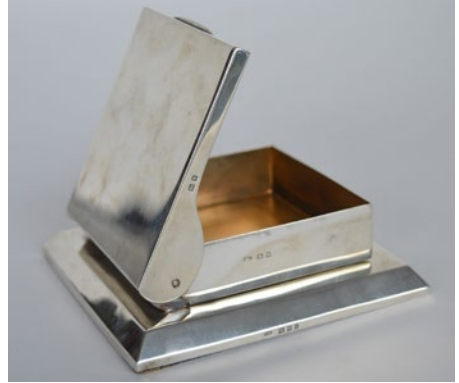
124

124. An attractive pair of silver bread baskets with gadroon rim and wire work mounts. London. By TB&S. Approx. 710 grams. Est. £450 - £500.



125

125. TIFFANY. A massive moulded glass hip flask with hinged screw on cover and removable sleeve. Approx. 22 cm high. Est. £800 - £1000.



126

126. An Art Deco cigarette box / dispenser on tapering support. London. By CD. Est. £200 - £250.

127. A cased set of silver and enamelled cocktail markers. Est. £60 - £80.

128. An Antique bead work purse. London 1813. By GB. Est. £70 - £80.

129. A small silver mounted pen wipe together with a needle case. Est. £40 - £50.

130. A heavy set of five OE teaspoons together with a boxed set of six bean top spoons. Est. £20 - £30.

131. A King's pattern cake slice together with a butter knife and a carving knife. Sheffield. By H&H. Est. £20 - £30.

132. A large heavy modern 925 standard picture frame decorated with flowers and leaves. Est. £30 - £40.

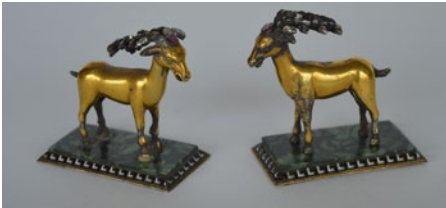
133. A heavy set of six Continental napkin rings engraved with boats. Est. £30 - £40.

134. A Victorian two piece christening set with embossed handles. Birmingham. By IH. Est. £15 - £20.

135. A heavy good quality two handled oval tray. Approx. 5 cms x 35 cms across with pie crust border. Sheffield 1940. By Viners. Est. £1200 - £1300.

136. A small silver tot with tapering sides. Birmingham. By FG&H. Approx. 44 grams. Est. £40 - £50.

137. A pair of Georgian style circular coasters of plain design. Est. £180 - £220.



138

138. A good pair of unusual figures of stags with rose diamond antlers on malachite base and enamelled border. Est. £2000 - £2500.



139

139. An unusual silver carriage clock with swing handle and white enamelled dial on bun feet. London. By GH. Est. £300 - £400.

140. A good heavy large hobnail cut lemonade jug with crested top and hinged cover. Approx. 30cm high. Birmingham. By JT&H. Est. £450 - £500.

141. A good Scottish wine funnel stand with reeded border. Edinburgh 1823. By HB. Est. £250 - £300.

142. An attractive pedestal tazza with fluted decoration. Sheffield 1892. By Mappin & Webb. Est. £280 - £320.

143. An attractive pair of oval boat shaped bonbon dishes pierced with flowers and leaves. Birmingham 1893. Approx. 172 grams. Est. £160 - £180.



144

144. A small cream jug with card cut rim. Birmingham. By JW. Est. £40 - £50.

145. A good boxed set of six bright cut teaspoons and matching tongs. Est. £25 - £35.

146. A good quality salver with bright cut decoration and central armorial with shell border. London 1849. Weighing approx. 70 oz. Approx. 43 cms in diameter. Est. £900 - £1000.

There will be a 20 minute break.



Jewellery

THE UNIVERSITY
OF
Reading



147

147. A 1905 half sovereign mounted as a pendant together with a ring. *Est. £170 - £200.*

148. A Greek gold coin in modern gold mount. *Est. £80 - £90.*

149. A group of three gold gem set charms. Approx. 15 grams. *Est. £140 - £180.*

150. A 9 carat rose gold snake link chain with ring clasp. Approx. 7 grams. *Est. £50 - £60.*

151. A heavy 18 carat signet ring in engraved mount. Approx. 8.6 grams. *Est. £150 - £200.*

152. A 9 carat flat link bracelet etc. Approx. 18 grams. *Est. £140 - £180.*

153. A 9 carat curb link watch albert set with bar. Approx. 25 grams. *Est. £250 - £300.*

154. A group of heavy gold 9 carat band rings together with a cameo ring. Approx. 8 grams. *Est. £80 - £100.*



155

155. An unusual circular Essex crystal brooch in the form of a collie dog with pearl border set in gold. *Est. £750 - £850.*

156. A 9 carat opal gate bracelet with heart shaped padlock. Approx. 12 grams. *Est. £100 - £150.*

157. A heavy 9 carat bloodstone set intaglio ring with scroll decoration. Approx. 8.5 grams. *Est. £90 - £100.*



158

158. A heavy 18 carat ruby and diamond ring inset with a face. Approx. 7.8 grams. *Est. £300 - £350.*

159. A small 18 carat diamond cluster ring. Approx. 2.3 grams. *Est. £50 - £60.*

160. An 18 carat square daisy head cluster ring. Approx. 2.9 grams. *Est. £50 - £60.*

161. A heavy 18 carat diamond mounted gent's ring. Approx. 8 grams. *Est. £150 - £200.*

162. A small gold half eternity ring. Approx. 3 grams. *Est. £60 - £70.*

163. An 18 carat opal five stone graduated half hoop ring in claw mount. *Est. £60 - £80.*

164. A 9 carat curb link bracelet decorated with novelty musical charms. Approx. 23 grams. *Est. £150 - £200.*

165. An unusual heavy gold and green stone cluster ring. Approx. 4.2 grams. Est. £40 - £60.

166. An 18 carat white gold graduated half eternity ring. Est. £100 - £150.

167. An attractive French platinum full eternity ring. Finger size K 1/2. Est. £350 - £400.

168. A small diamond single stone gypsy set ring in white gold with claw mount. Est. £200 - £250.



169

169. A 15 carat gold pearl mounted pendant on fine link chain and loop top. Est. £300 - £350.

170. A small extending pencil together with a gold spinning fob. Est. £20 - £30.

171. A 9 carat amethyst and pearl bangle with concealed clasp. Approx. 6.5 grams. Est. £60 - £70.

172. A small gold pearl and amethyst brooch set with rubies. Est. £50 - £60.



173

173. A diamond five stone half hoop ring in 18 carat claw mount. Est. £500 - £600.

174. A group of four pairs of gold gem set earrings in fitted boxes. Approx. 2 grams. Est. £30 - £50.

175. A 9 carat rope twist hinged bracelet with concealed clasp. Approx. 10.5 grams. Est. £150 - £200.

176. A 9 carat three colour gold woven link necklace. Approx. 4 grams. Est. £60 - £70.

177. A 9 carat modern sapphire and diamond cluster ring in two colour setting. Approx. 3 grams. Est. £45 - £50.

178. A heavy 9 carat ruby and diamond cluster ring. Approx. 4.2 grams. Est. £60 - £70.



179

179. A 9 carat flat link gold necklace with textured links. Approx. 11.5 grams. Est. £160 - £180.

180. A small diamond heart shaped pendant with loop top and fine link chain. Approx. 1.5 grams. Est. £30 - £50.

181. Two diamond mounted gem set rings in two colour gold. Approx. 2.5 grams. Est. £40 - £50.

182. An Antique diamond five stone half hoop ring in two colour gold mount. Est. £400 - £500.



183

183. An attractive French sapphire and diamond cluster ring with tapered shoulders and pierced band. *Est. £1000 - £1200.*

184. An attractive peridot seventeen stone bracelet with gold surround and ring clasp. *Est. £400 - £500.*



185

185. A good Antique amethyst pendant with pierced decoration and loop top decorated with flowers. *Est. £600 - £700.*

186. FRED. A good quality French 18 carat two colour gold bracelet with concealed clasp and diamond mounts. *Est. £800 - £1000.*

187. A good Antique tortoiseshell jewellery box with hinged cover and heart shaped fitting. *Est. £250 - £300.*

187A. A 9 carat Mizpah ring together with a similar locket. *Est. £40 - £50.*

187B. A pair of modern silver cuff links together with matching ring. Sheffield. By JS. *Est. £30 - £40.*

187C. A good heavy silver curb link watch chain set with bar. Approx. 84 grams. *Est. £60 - £80.*

187D. A 9 carat flat link diamond mounted bracelet with concealed clasp. Approx. 7.7 grams. *Est. £80 - £100.*

187E. A 9 carat smoky quartz brooch. Approx. 6 grams. *Est. £30 - £50.*

188. A group of five 9 carat gem set rings in two colour gold. Approx. 8 grams. *Est. £70 - £80.*

189. A small 9 carat wedding band together with a yellow stone ring. Approx. 4.4 grams. *Est. £30 - £40.*

190. A small silver charm together with a fruit knife etc. *Est. £20 - £30.*

191. A small silver curb link watch albert set with bar. *Est. £20 - £30.*

192. A 9 carat sovereign mount together with some emerald set earrings. Approx. 4 grams. *Est. £30 - £40.*

193. A 14 carat mesh bracelet with concealed clasp. Approx. 12 grams. *Est. £100 - £150.*

194. A 14 carat two colour gold bracelet with concealed clasp. Approx. 14 grams. *Est. £120 - £140.*

195. A heavy three strand 14 carat bracelet with concealed clasp. Approx. 14 grams. *Est. £120 - £140.*



196

196. An attractive Continental star shaped pendant set in 14 carat gold on fine link chain. Approx. 9.5 grams. Est. £150 - £200.



197

197. A heavy 18 carat diamond bombe ring in 14 carat mount. Est. £150 - £200.

198. A group of Antique watch keys. Est. £15 - £20.

199. A good diamond three stone ring in 18 carat and platinum claw mount. Est. £450 - £500.

200. A good 18 carat keeper ring. Chester 1907. By TWR. Approx. 7.1 grams. Est. £200 - £250.

200A. A group of four tortoiseshell mounted engraved brooches. Est. £25 - £30.

200B. Various costume jewellery, silver earrings and a pearl necklace. Est. £60 - £70.

200C. A 9 carat oval framed cameo of a lady's head in claw mount. Est. £70 - £90.

200D. An 18 carat white gold diamond crossover ring in claw mount. Est. £130 - £150.

200E. A 9 carat star sapphire single stone ring. Approx. 3.8 grams. Est. £35 - £40.

200F. A heavy 18 carat Chopard style diamond ring. Approx. 4.6 grams. Est. £80 - £100.

200G. A gold black opal and pearl oval cluster ring. Approx. 4.7 grams. Est. £50 - £60.

200H. A good quality 18 carat white gold pavé ring. Est. £750 - £850.

200J. A pair of amber ear studs together with a gold brooch. Est. £35 - £45.

200K. A small silver amber brooch together with a watch fob etc. Est. £25 - £35.

200L. A 15 carat pearl and enamelled decorated brooch. Approx. 4 grams. Est. £50 - £60.

200M. A large oval hair decorated mourning brooch with scroll decoration. Approx. 16 grams. Est. £140 - £160.

201. DORRIE NOSSITER. An attractive silver and moonstone necklet mounted with pearls and chrysoprase. Est. £300 - £350.

202. A heavy 18 carat daisy head cluster ring in claw mount. Approx. 3 grams. Est. £50 - £60.

203. A pair of gilt cornelian cuff links together with two pairs of enamelled cuff links. Est. £20 - £30.

204. A pair of silver and enamelled cuff links together with another pair. *Est. £20 - £30.*

205. A string of graduated amber beads with silver interlinks. Approx. 64.5 grams. *Est. £200 - £250.*

206. A good graduated string of cherry amber beads with threaded clasp. Approx. 42 grams. *Est. £300 - £350.*

207. An unusual Continental ball mounted amber bead necklace inset with discs. Approx. 49 grams. *Est. £100 - £150.*

208. A good string of cherry amber beads with gold clasp. Approx. 55 grams. *Est. £100 - £150.*

209. A pair of amber bead earrings with silver mounts. Approx. 12 grams. *Est. £40 - £60.*

210. A good quality amber and seed pearl necklace, the large oval drop carved with flowers suspended on a seed pearl chain in fitted tapestry box. *Est. £4000 - £5000.*

211. An unusual Russian theatrical pendant mounted with three rectangular amber panels set in silver with ring clasp. Approx. 20.9 grams. *Est. £350 - £400.*



212

212. A good graduated string of yellow amber beads with gold ring clasp. Approx 91 grams. *Est. £1200 - £1500.*

213. CARTIER. A black enamelled cigarette case, the silver gilt case with coral and gold thumb piece, pierced interior and French assay marks. *Est. £600 - £700.*

214. A pair of good quality heavy 18 carat hoop earrings inset with three rows of diamonds. Approx. 7.6 grams. *Est. £200 - £250.*

215. A stylish 14 carat leaf brooch together with a matching earring. Approx. 5.5 grams. *Est. £60 - £80.*

216. A small yellow stone pendant in 9 carat gold with loop top. Approx. 3.5 grams. *Est. £20 - £30.*

217. A 9 carat yellow stone ring in claw mount and wavy edge. Approx. 6.5 grams. *Est. £70 - £80.*

218. An 18 carat flat link bracelet with concealed clasp. Approx. 16.5 grams. *Est. £300 - £350.*

219. A heavy 18 carat flat link necklace with concealed clasp. Approx. 36 grams. *Est. £650 - £700.*

220. A good quality Antique circular cluster ring in platinum rub over mount. *Est. £700 - £800.*



221

221. A good pearl and diamond cocktail ring with large central pearl in platinum border and claw mount. *Est. £1300 - £1500.*

222. A heavy good quality Russian ruby and diamond hinged bangle with concealed clasp and rope twist decoration. Approx. 18.6 grams. Est. £700 - £800.



223

223. A pair of attractive Edwardian ear pendants with bow decoration and large central stone. Est. £700 - £800.

224. A heavy modern ruby, sapphire and emerald ring in gold mount. Approx. 5 grams. Est. £50 - £60.

225. A 9 carat blood stone intaglio ring. Approx. 2.5 grams. Est. £20 - £30.

226. A 9 carat mounted rectangular ruby step cut single stone ring. Approx. 2.9 grams. Est. £30 - £40.

227. A 9 carat large amethyst single stone ring in claw mount. Approx. 6 grams. Est. £40 - £60.

228. An unusual sapphire, ruby and rose diamond swivel ring. Approx. 4.5 grams. Est. £100 - £150.

229. A large oval sapphire and diamond cluster ring in two colour gold. Est. £80 - £100.

230. A 9 carat pearl mounted bracelet with concealed clasp. Approx. 5 grams. Est. £40 - £60.

231. A large oval rose quartz pendant in 9 carat frame. Approx. 23 grams. Est. £40 - £60.

232. A 9 carat sapphire mounted flower brooch with scroll decoration. Est. £20 - £30.



233

233. A 9 carat bracelet mounted with a watch and heart shaped padlock. Approx. 25 grams. Est. £240 - £280.

234. A 9 carat amethyst pendant on fine link chain together with matching ear studs. Est. £20 - £30.

235. A pair of attractive amethyst and pearl drop earrings in rose gold. Est. £30 - £40.

236. A good circular link necklace. Approx. 24 grams. Est. £260 - £280.

237. An attractive pearl and rose diamond brooch of circular form mounted in gold. Est. £400 - £500.

238. A small gold, peridot and pearl gold mounted bar brooch. Approx. 2.5 grams. Est. £50 - £60.

239. A pearl heart shaped crescent brooch in 15 carat. Approx. 3 grams. Est. £85 - £95.

240. A heavy gold filigree decorated ring. Approx. 10 grams. Est. £200 - £250.

241. An 18 carat three stone ring in claw mount. Approx. 2.8 grams. Est. £60 - £80.

242. An attractive emerald and diamond daisy head cluster ring in claw mount. Est. £150 - £200.

243. A small gold mounted pencil with loop top. Approx. 10 grams. Est. £80 - £100.

244. An attractive aquamarine pendant on fine link chain and ring clasp. Est. £180 - £220.

245. A heavy silver and blue paste cocktail ring in claw mount. Est. £35 - £45.



246

246. A good quality banded agate desk seal with gold mount. Est. £100 - £150.

247. A gold cameo pendant together with an Antique ring and two other rings. Approx. 6 grams. Est. £50 - £60.

248. A 9 carat ruby and diamond Art Deco ring in white gold. Approx. 4 grams. Est. £40 - £50.

249. A small 18 carat boat shaped ring inset with sapphires and diamonds. Approx. 2 grams. Est. £30 - £40.

250. A small 18 carat sapphire and diamond limestone cluster ring. Est. £30 - £50.

251. A small pink stone and rose diamond cluster ring in 9 carat. Est. £30 - £50.

252. An attractive heart shaped locket inset with turquoise on fine link chain. Approx. 4.8 grams. Est. £30 - £50.

253. A small 9 carat signet ring set in rose gold. Approx. 3 grams. Est. £25 - £30.

254. A plain 18 carat wedding band with dome decoration. Approx. 5.3 grams. Est. £80 - £100.

255. A small Lord's prayer charm. Est. £10 - £15.



256

256. An attractive diamond single stone ring measuring 1.02 carats with tapered shoulders and claw mount. Est. £2000 - £2500.

257. An attractive amethyst and pearl hinged bracelet with concealed clasp and safety chain. Approx. 11.5 grams. Est. £250 - £300.



258

258. A heavy 18 carat French bracelet with concealed clasp. Approx. 35.7 grams. Est. £700 - £800.

259. A 9 carat flat link bracelet. Approx. 6 grams. Est. £90 - £100.

260. A small heart shaped diamond pendant with loop top on fine link chain. Approx. 3.3 grams. Est. £50 - £60.

261. A small modern 9 carat St. Christopher on fine link chain. Est. £15 - £20.

262. A 9 carat sapphire mounted gem set ring together with one other. Approx. 3.3 grams. Est. £50 - £60.

263. A 9 carat heart shaped pendant inset with diamond. Approx. 1.4 grams. Est. £20 - £30.

264. A 9 carat heart shaped sapphire cluster ring. Approx 1.5 grams. Est. £20 - £30.

265. A 9 carat curb link bracelet with ring clasp. Approx. 8 grams. Est. £120 - £150.

266. A silver butterfly brooch together with a bangle, brooch etc. Est. £20 - £30.

267. Two small 14 carat brooches in the form of Eastern men. Approx. 4 grams. Est. £50 - £60.

268. A heavy gold signet ring mounted with agate in 9 carat. Approx. 8 grams. Est. £70 - £80.

269. A 9 carat pearl single stone ring in rose gold. Approx 2 grams. Est. £20 - £30.

270. A small engraved band ring. Approx. 2 grams. Est. £20 - £30.

271. A good 18 carat and platinum single stone ring in claw mount. Est. £80 - £100.

272. A silver and paste Continental brooch in the form of a vase and flowers. Est. £20 - £30.

273. A Continental cast seal with loop top. Est. £50 - £60.

274. A small 9 carat child's bracelet together with one other. Approx. 7.8 grams. Est. £60 - £80.

275. A small pair of attractive emerald and diamond drop earrings in box. Est. £30 - £50.

276. A pair of rose diamond clover earrings in gold mount. Est. £30 - £50.

277. A pair of diamond drop earrings together with a pair of gold mounted ear studs. Est. £30 - £40.

278. A small gold half eternity ring. Approx. 4 grams. Est. £60 - £80.

279. A diamond and sapphire 14 carat gold mounted ring. Approx. 7.8 grams. Est. £120 - £150.

280. A sapphire and diamond 18 carat seven stone ring in platinum claw mount. Approx. 2.8 grams. Est. £80 - £100.

281. A small 18 carat five stone ring with rub over mount. Approx. 2 grams. Est. £50 - £60

- 282.** A pair of diamond seven stone circular cluster earrings. Est. £70 - £80.
- 283.** A 9 carat multi gem set necklace with gold clasp. Approx. 11 grams. Est. £130 - £150.
- 284.** A 9 carat amethyst single stone ring set in gold. Est. £70 - £80.
- 285.** An 18 carat boat shaped diamond five stone ring. Est. £130 - £150.
- 286.** A pair of attractive tassel drop earrings with loop tops. Est. £80 - £100.
- 287.** An attractive enamelled and pearl brooch mounted with eight rose cut diamonds in gold. Approx. 11.8 grams. Est. £300 - £350.
- 288.** A pair of good quality high carat gold drop earrings with loop tops in fitted box. Approx. 10 grams. Est. £250 - £350.
- 289.** A pair of good diamond single stone ear studs in white gold claw mount. Approx. 1 carat. Est. £1000 - £1200.
- 290.** A pair of attractive 18 carat diamond star shaped earrings in two colour mount. Approx. 3.5 grams. Est. £80 - £120.
- 291.** A 9 carat hinged bangle with concealed clasp. Approx. 8.1 grams. Est. £120 - £150.
- 292.** A small diamond single stone ring in claw mount. Est. £200 - £250.
- 293.** A small diamond single stone stickpin in twist mount. Est. £50 - £60.
- 294.** A heavy gold fancy link necklace together with a moonstone cross. Approx. 10 grams. Est. £100 - £150.
- 295.** A small gold fox head brooch with ruby eyes. Est. £40 - £50.
- 296.** A 9 carat fancy link bracelet with ring clasp. Approx. 4.7 grams. Est. £50 - £60.
- 297.** A heavy gold nugget bracelet with ring clasp. Est. £200 - £250.
- 298.** An attractive pearl and diamond mounted bracelet on flexible strap. Est. £300 - £350.
- 299.** An attractive diamond single stone ring in white gold claw mount including certificate. Est. £1500 - £2000.
- 300.** A small 9 carat fine link bracelet with ring clasp. Approx. 1.7 grams. Est. £15 - £20.
- 301.** A pair of heavy 18 carat star shaped drop earrings. Approx. 4 grams. Est. £120 - £150.
- 302.** A 9 carat fancy link pendant on fine link chain. Approx. 1 gram. Est. £15 - £20.
- 303.** A 9 carat fancy link bracelet with concealed clasp. Approx. 8 grams. Est. £120 - £150.
- 304.** Two 9 carat modern wedding bands. Approx. 5.1 grams. Est. £75 - £85.
- 305.** An attractive French diamond full eternity ring marked to side. Finger size M 1/2. Est. £300 - £350.
- 306.** An attractive yellow sapphire five stone ring in 18 carat mount. Est. £600 - £650.
- 307.** An attractive Antique Georgian brooch with crystal mount in high carat setting. Est. £250 - £350.
- 308.** A good Antique enamelled mourning ring with ball decoration. Est. £350 - £400.
- 309.** A 9 carat heart shaped pendant on fine link chain. Approx. 3 grams. Est. £30 - £40.

310. An attractive emerald and diamond seven stone ring in 14 carat gold setting. Est. £450 - £500.

311. An attractive Antique chased heart shaped padlock with loop top and locket back. Est. £170 - £200.

312. A good quality Victorian pearl and rose diamond hinged bracelet with concealed clasp in 15 carat and fitted box. Est. £650 - £700.

313. A heavy gold pendant in the form of a pharaoh. Approx. 9 grams. Est. £80 - £100.

314. A modern 9 carat flat link bracelet with ring clasp. Approx. 11 grams. Est. £90 - £100.

315. An amethyst and gold bracelet with ring clasp. Est. £70 - £80.



316

316. A small diamond single stone pendant in claw mount. Est. £700 - £800.

317. A good Antique amethyst and rose diamond three stone ring in claw mount. Est. £450 - £500.

318. An Antique circular pearl and diamond cluster ring in two colour gold mount. Est. £500 - £600.

319. A small sapphire and rose diamond snuff box with loop top. Est. £250 - £300.

320. A good Antique pearl mounted brooch in the form of a shamrock with suspension chain. Est. £150 - £200.

321. A finely carved jade panel with loop top and pearl mounts. Est. £450 - £500.

322. A gent's 9 carat signet ring. Approx. 6 grams. Est. £50 - £60.

323. Two 9 carat pendants with loop tops. Approx. 5 grams. Est. £40 - £60.

324. A 9 carat herringbone necklace with ring clasp. Approx. 6 grams. Est. £40 - £60.

325. An 18 carat oval sapphire and diamond cluster in claw mount. Est. £200 - £250.

326. An attractive 18 carat daisy head circular cluster ring in two colour claw mount. Est. £250 - £300.



327

327. A good quality modern 18 carat diamond cross with loop top and fine link chain. Est. £350 - £400.

- 328.** An opal circular cluster ring in gold claw mount. Approx. 3.6 grams.
Est. £25 - £45.
- 329.** A 9 carat pearl mounted target brooch together with one other. Approx. 6.5 grams.
Est. £60 - £70.
- 330.** A small heart shaped gold padlock together with a diamond set pendant etc. Approx. 10.5 grams. *Est. £50 - £60.*
- 331.** Two pairs of hallmarked cuff links together with some gem set rings. Approx. 28 grams. *Est. £20 - £30.*
- 332.** A quantity of St. Christophers, silver pendants etc. *Est. £20 - £30.*
- 333.** A pair of silver heart shaped pendants together with lockets, chains etc. Approx. 65 grams. *Est. £30 - £50.*
- 334.** A silver identity bracelet etc. Approx. 52 grams. *Est. £20 - £30.*
- 335.** Two pairs of 9 carat cuff links. Approx. 7.5 grams. *Est. £60 - £70.*
- 336.** A 9 carat diamond set single stone ring in claw mount. Approx. 25 points.
Est. £80 - £100.
- 337.** A heavy 18 carat line bracelet with concealed clasp. *Est. £550 - £650.*
- 338.** A diamond half eternity ring in 18 carat gold. *Est. £100 - £120.*
- 339.** A silver coin bracelet together with a curb link bracelet. Approx. 33 grams.
Est. £35 - £45.
- 340.** A 9 carat rose gold turquoise mounted bracelet with heart shaped padlock. Approx. 8.2 grams. *Est. £100 - £120.*
- 341.** A white gold and aquamarine ring in claw mount and diamond shoulders.
Est. £200 - £250.
- 342.** An 18 carat lapis and opal three stone ring in claw mount. Approx. 4.3 grams.
Est. £140 - £160.
- 343.** An 18 carat pearl chain with concealed clasp. Approx. 9 grams. *Est. £500 - £600.*
- 344.** An attractive French white gold narrow eternity ring in claw mounts. Finger size K.
Est. £400 - £500.
- 345.** An oval gold agate snuff box with hinged top. *Est. £80 - £100.*
- 346.** A small platinum five stone ring in claw mount. *Est. £50 - £60.*
- 347.** A rose diamond double row eternity ring. *Est. £50 - £60.*
- 348.** A small 18 carat gypsy set ring together with a plain wedding band. Approx. 5.7 grams.
Est. £60 - £80
- 349.** A small ring, cuff link and gilt watch etc. *Est. £30 - £40.*
- 350.** An Antique enamel decorated mourning ring with engraved decoration. Approx. 6.7 grams. *Est. £40 - £60.*
- 351.** Four pairs of good gold gem set earrings. Approx. 4 grams. *Est. £60 - £80.*
- 352.** A pair of attractive diamond tassel drop earrings with loop tops. Approx. 1 gram.
Est. £20 - £30.
- 353.** Two 9 carat signet rings. Approx. 3.5 grams. *Est. £50 - £60.*

354. A small diamond half eternity ring together with a diamond two row ring. Approx. 3 grams. Est. £45 - £55.

355. A 9 carat hollow flat link bracelet. Approx. 9 grams. Est. £140 - £180.

356. A 9 carat diamond triple cluster ring in claw mount. Approx. 3 grams. Est. £45 - £55.

357. Three good silver pendants. Est. £15 - £20.

358. A heavy silver ingot, brooch, cuff links etc. Approx. 45 grams. Est. £20 - £30.

359. An attractive sapphire and diamond oval cluster ring in two colour gold. Approx. 2 grams. Est. £40 - £60.

360. A group of three gold wedding bands of plain design. Approx. 6.5 grams. Est. £60 - £80.

361. An 18 carat small gypsy set ring. Approx. 4.4 grams. Est. £80 - £100.

362. A small 18 carat two colour gold single stone diamond ring. Est. £40 - £60.

363. A 1967 sovereign mounted as a pendant on fine link chain. Est. £200 - £250.

364. A good attractive Antique circular cluster ring in white gold mount. Est. £700 - £800.

365. A small diamond daisy head cluster ring in 18 carat and platinum. Est. £350 - £450.

366. An Antique emerald and diamond five stone half hoop ring in engraved mount. Est. £700 - £800.

367. An unusual gold watch key in the form of a revolver. Est. £30 - £40.

368. A pair of 14 carat rope twist ear pendants. Approx. 3.2 grams. Est. £40 - £50.

369. A bundle of 9 carat mounted fobs. Approx. 10 grams. Est. £80 - £100.

370. A 14 carat diamond and sapphire ring in claw mount. Approx. 6.8 grams. Est. £100 - £150.

371. A platinum set six stone ring in boat shaped mount. Est. £270 - £300.

372. An attractive emerald and diamond cocktail ring in finely pierced setting with claw mount. Est. £1200 - £1500.

373. A good emerald fringe necklace with gold barrel clasp. Est. £200 - £250.

374. A large gold ruby and diamond marquise shaped ring with pierced setting. Est. £150 - £200.

375. A good quality sapphire, diamond and ruby twist ring in 18 carat mount. Est. £200 - £250.

376. A heavy large tourmaline and diamond retro ring with open work decoration. Approx. 15.5 grams. Est. £800 - £900.

377. An attractive rose diamond brooch in the form of three flying storks with outstretched wings. Est. £1000 - £1500.

378. An attractive Victorian 18 carat sapphire and diamond five stone snake ring. Est. £300 - £350.



379

379. A Victorian 18 carat diamond and emerald boat shaped ring. Est. £850 - £950.

380. A novelty extending pencil in the form of a champagne bottle in 18 carat gold with loop mount. *Est. £750 - £800.*

381. An unusual gold brooch mounted with a rose diamond fox's head and ruby eyes. *Est. £200 - £250.*

382. A small diamond daisy head cluster ring in white gold mount. *Est. £50 - £60.*

383. A heavy 14 carat seven stone two colour gold band ring. Finger size M 1/2. Approx. 9.8 grams. *Est. £150 - £200.*

384. A good 14 carat modernistic marquise shaped diamond cluster ring in 14 carat gold. *Est. £250 - £300.*

387. A good quartz desk seal with scroll decoration and faceted body. *Est. £300 - £350.*



388

388. A good sapphire and diamond three stone ring in 18 carat and platinum claw mount. *Est. £1600 - £1800.*

389. A 9 carat cross on fine link chain with loop top. Approx. 12 grams. *Est. £180 - £220.*

390. A 9 carat torque bangle with pierced decorations. Approx. 12 grams. *Est. £180 - £220.*

391. A stylish emerald and diamond Art Deco style ring in platinum mount. *Est. £1200 - £1400.*

392. A 9 carat identity bracelet with ring clasp. Approx. 8 grams. *Est. £60 - £80.*

393. A group of three 22 carat wedding bands. Approx. 11 grams. *Est. £150 - £200.*

394. Two diamond mounted gold rings. *Est. £150 - £200.*

395. A small 9 carat cross on fine link chain. Approx. 4 grams. *Est. £40 - £50.*

396. A good Continental rose diamond brooch / pendant in claw mount with loop top. *Est. £700 - £800.*



385

385. A good rose diamond and platinum caduceus brooch mounted with natural pearl. *Est. £1400 - £1600.*

386. A small sapphire and diamond three stone ring in 18 carat and platinum claw mount. *Est. £200 - £250.*

397. A good Antique onyx and pearl brooch with ball decoration and locket back.
Est. £120 - £150.

398. A good diamond solitaire ring, the mount attractively paved with diamonds and engraving, the central stone weighing approx. 2.01 carats. *Est. £4500 - £5000.*

399. A good pair of cushion set sapphire and diamond earrings in claw mount and white gold. *Est. £800- £1000.*

399A. A pair of attractive diamond ear studs with gold rub over mounts. Approx. 0.5 carats in total. *Est. £500 - £600.*

399B. A stylish aquamarine and baguette cut diamond cocktail ring in 18 carat rub over mount, together with a pair of marquise aquamarine earrings. *Est. £350 - £400.*

399C. An attractive pearl single stone ring with diamond surround in white gold. *Est. £350 - £400.*

400. An attractive sapphire and diamond oval cluster ring in pierced mount. *Est. £800 - £1000.*

401. An unusual spinning fob set in brass. *Est. £30 - £40.*

402. An attractive aquamarine and rose gold crescent brooch in claw mount. *Est. £150 - £200.*

403. A good Antique rose diamond stick pin in the form of a cockerel. *Est. £250 - £300.*

404. A long graduated string of beads. *Est. £100 - £150.*

405. A good, rare and unusual, finely carved aquamarine pendant in the form of a bamboo, the mount decorated with seed pearls and rose quartz. Approx. 6 cms long. *Est. £2000 - £2500.*



406

406. A cabochon emerald and diamond dress ring, the cabochon emerald mounted in gold band with a surround of twelve old cut diamonds and rub over mount. *Est. £8000 - £10000.*

407. A small collection of costume jewellery. *Est. £20 - £30.*

408. A laquered box containing costume jewellery. *Est. £25 - £30.*

409. Costume jewellery, old coin etc. *Est. £20 - £30.*

410. A large quantity of good costume jewellery, pearl necklaces etc. *Est. £20 - £30*

411. A wooden box of costume jewellery etc. *Est. £50 - £60.*

412. Costume jewellery. *Est. £20 - £30.*

413. A box of costume jewellery. *Est. £20 - £30.*

414. A box of costume jewellery. *Est. £20 - £30.*

415. A box of costume jewellery. *Est. £20 - £30.*

416. Silver mounted pendants etc. *Est. £20 - £30.*

417. An attractive stylish silver suite of jewellery. *Est. £20 - £30.*

418. Four boxed pairs of gold gem set earrings. Approx. 3 grams. Est. £30 - £40.

419. A small gold fob watch in 14 carat gold. Est. £100 - £150.

420. A small silver fob watch with heart shaped dial and engraved back. Est. £40 - £50.

420A. A good quality platinum mounted cocktail watch on expanding strap with concealed clasp. Est. £350 - £400.

421. A small gold fob watch on fine link chain, together with a wristwatch. Est. £60 - £80.

422. A silver open faced pocket watch with white enamelled dial. Est. £30 - £40.

423. A small 9 carat lady's wristwatch together with a gent's wristwatch. Est. £30 - £40.

424. A 9 carat lady's wristwatch together with a gent's gold wristwatch. Est. £60 - £80.

425. A lady's 9 carat wristwatch on expanding strap. Approx. 10 grams. Est. £120 - £150.

426. A good quality platinum cocktail watch, the body paved with diamonds on mesh strap. Est. £400 - £500.

427. A gent's Rotary automatic wristwatch set with silver dial and leather strap. Est. £80 - £100.

428. A silver fob watch with white enamel dial together with a silver guard chain. Est. £40 - £60.

429. ROLEX. A gent's stainless steel oyster perpetual datejust with MOP and diamond dial. Est. £1200 - £1500.

430. A lady's 9 carat wristwatch on mesh strap. Approx. 5 grams. Est. £70 - £90.

431. A box containing various watch movements. Est. £20 - £30.

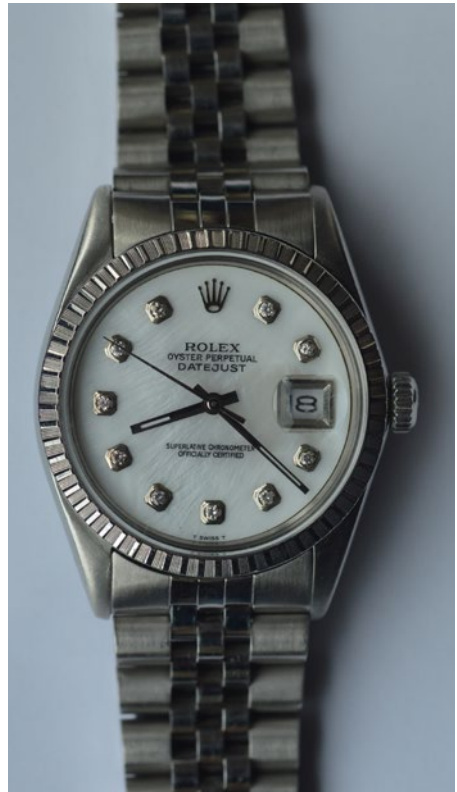
432. A collection of old pocket watch movements. Est. £20 - £30.

433. A quantity of various gent's and lady's wrist, pocket and fob watches. Est. £20 - £30.

434. A quantity of old Rolex paperwork. Est. £30 - £40.

435. Good leather jewellery boxes including Verer, Boucheron, VC&A, Tiffany etc. Est. £40 - £60.

There will be a 20 minute break.



429

Antique Furniture,
Porcelain and
Collectables



436. A collection of Antique early silver and other coins. Est. £20 - £30.

437. LALIQUE: A good opalescent glass Lalique Formose bowl shaped vase decorated with swirling fish in aquatic scene. Approx. 17 cms high. Signed "R Lalique, France" to base. Est. £1000 - £1200.



438

438. LEONARD RICHMOND. "Boats moored in Torquay Harbour". Approx. 59 cms x 44 cms. Est. £600 - £800.



439

439. FRED BOTTOMLEY. "Figures at the slipway in St. Ives" in painted frame. Approx. 39.5 cms x 29 cms. Est. £200 - £300.

440. A tribal spear together with a stick and wooden centrepiece. Est. £30 - £40.

441. A heavy group of three Oriental vase stands. Est. £40 - £60.

442. A group of five Imari wall chargers. Est. £100 - £150.



443

443. A Royal Worcester ewer with gilded decoration. Est. £60 - £80.

444. A Royal Worcester floral decorated vase. Est. £30 - £50.

445. A good quality hardstone ashtray mounted with pelicans. Est. £500 - £600.

446. A good boxed set of various malachite and agate hardstone eggs. Est. £300 - £350.

447. A group of six carved napkin rings. Est. £30 - £40.

448. A small brass trivet in the form of a swastika. Est. £20 - £30.

449. No Lot.

450. A microscope on stand by Fratelli & Koristka of Milan. Est. £30 - £40.

451. A good quality brass tray inlaid with flowers and butterflies. *Est. £20 - £30.*

452. A good French repeating carriage clock on brass feet with white enamelled dial. *Est. £250 - £300.*

453. A good heavy handmade model of a canon. *Est. £150 - £200.*

454. A good banded agate moon shaped scent bottle with lift off cover. *Est. £200 - £250.*

455. An ornate framed mirror on bracket feet. *Est. £20 - £30.*

456. A good brass mounted floral framed mirror decorated with flowers. *Est. £30 - £40.*

457. An attractive circular dressing table mirror decorated with a cherub. *Est. £30 - £40.*

458. A pair of 1914-1918 war medals. PTE. F. J. HOFF 20066, C. GDS. *Est. £50 - £60.*

459. A 1914-15 star. PLY. 6133. PTE. J. SHEPHERD, R.M.L.I. *Est. £20 - £30.*

460. A good pair of cased presentation scissors with brass handles. *Est. £30 - £40.*

461. A collection of old copper and nickel coins. *Est. £20 - £30.*

462. Good military cap badges etc. *Est. £30 - £60.*

463. A good Antique copper pot with finely carved handle. *Est. £50 - £60.*

464. A good brass mounted desk set with antler mounts consisting of candlesticks, inkwell and paper knife. *Est. £200 - £250.*



465

465. An unusual Japanese radio in the form of a dog in seated position made by TOKIWA number 725. *Est. £50 - £80.*

466. An unusual walking cane in the form of a dog with bead eyes. *Est. £80 - £100.*

467. An Antique brass skillet marked to handle 3H. *Est. £40 - £60.*

468. An Antique brass pestle and mortar. *Est. £50 - £60.*

469. A good pair of maple framed silhouettes. *Est. £40 - £60.*

470. A pair of gilt framed portraits by J. Mitchell Cox. *Est. £50 - £60.*

471. A pair of framed and glazed sketches in gilt frame. *Est. £50 - £60.*

472. A good pair of gilt framed Coronation pictures with ribbon mounts. *Est. £50 - £60.*

473. HARDY. A good 3 and 5/8 perfect fishing reel in mint condition in fitted box complete with a cane four piece rod in travelling case, (two end tips). *Est. £350 - £400.*

474. A good German porcelain headed doll. Bebe - elite by Max Handwerk. *Est. £40 - £60.*

475. A modern violin in case. *Est. £30 - £50.*

476. A cased German violin with two bows. Marked RGW. Est. £60 - £80.

477. A good flat back twelve string mandolin in leather case by Luciano Grimaldi, Catania. Est. £100 - £150.

478. A good set of eleven graduated pewter tankards. Est. £40 - £60.



479

479. A good large Branham pottery vase with dragon mounted handles. Approx. 45 cms high. Signed to the base. Est. £100 - £150.

480. A good pair of 19th Century balance scales together with weights by D. Grave, Short & Fanner of London. Est. £150 - £200.

481. Two 18th Century salt glazed jugs. Est. £70 - £90.

482. A pair of decorative oval mounted Staffordshire dogs. Est. £20 - £30.

483. A pair of early silver shoe buckles together with a silver cast buckle. Est. £30 - £40.

484. Small enamel buckle together with coral buckles etc. Est. £20 - £30.

485. Silver mounted turquoise buckle etc. Est. £30 - £50.

486. A good pair of Antique paste buckles mounted in silver. Est. £60 - £80.

487. A pair of steel buckles together with some stone set mounts. Est. £50 - £60.

488. A pair of small silver shoe buckles together with a silver buckle etc. Est. £30 - £50.

489. A gilt snake entwined buckle together with an enamelled one etc. Est. £30 - £50.

490. A pair of garnet and gilt shoe buckles together with some hallmarked silver buckles. Est. £30 - £40.

491. A large cut steel buckle together with one other. Est. £30 - £50.

492. A good pair of paste buckles with gold mounts. Est. £100 - £150.

493. A mahogany wall mounted clock with bird decoration. Est. £30 - £50.

494. A large Continental tapestry in gilt frame. Approx. 72cm wide. Est. £70 - £80.

495. A large framed, glazed and signed England cricket shirt, approx. 107 cms across, together with three cricketing books. Est. £100 - £150.

496. A large Eastern Antique pewter circular charger with etched decoration. Approx. 44cm diameter. Est. £50 - £60.

497. A good gilt Antique wall mirror with central oval miniature and ribbon top. Est. £40 - £60.

498. An attractive pair of Continental porcelain miniatures of gentlemen in rectangular frame. *Est. £60 - £80.*

499. A good brass and iron three piece companion set. *Est. £30 - £50.*

500. A heavy brass and iron stick stand. *Est. £30 - £50.*

501. An unusual oak framed wall clock with dial, decorated with star signs. *Est. £30 - £50.*

502. A Newlyn style two handled vase together with a copper tray and some bellows. *Est. £30 - £50.*

503. An unusual mahogany stationery box with brass mounts. *Est. £30 - £50.*

504. An Antique carved turned truncheon. *Est. £20 - £30.*

505. A small carved netsuke. *Est. £30 - £40.*

506. A good mahogany Regency hoop back carver chair with reeded columns. *Est. £50 - £60.*



507

507. A good oak twin pedestal desk, the rectangular top with gallery back and a panel of tooled leather. The pedestals each fitted with three drawers on carved plinth base. Approx. 153 cms x 73 cms. *Est. £250 - £300.*

508. A mahogany chiffonier with scroll panelled back on pedestal base. *Est. £60 - £80.*

509. A good walnut bevel edged mirror. *Est. £30 - £50.*

510. A large oval late 17th Century gate leg table with drawer to end on turned supports. *Est. £200 - £250.*

511. An oak carved coffer with hinged top and carved panel front mounted with two secret doors. *Est. £60 - £80.*



512

512. A mid 18th Century bureau with sloping hinged fall enclosing a walnut veneered fitted interior and small pigeon holes about a central enclosed cupboard flanked by fluted column concealed compartments, containing four long graduated drawers below on bracket feet. *Est. £300 - £400.*

513. A good glazed shaped display cabinet. *Est. £50 - £60.*

514. A good mahogany glazed three-fold screen with upholstered decoration. *Est. £120 - £150.*

515. A good large pine slim three door hall cupboard on pedestal base. Approx. 180 cms x 147 cms. *Est. £150 - £200.*

516. A large two drawer mahogany writing table on turned tapering supports to bracket feet and leather insert. Approx. 140 cms x 105 cms. *Est. £100 - £150.*

517. A late Victorian mahogany glazed bookcase on bracket feet and moulded cornice. *Est. £80 - £100.*

518. A small Edwardian wall mounted desk cupboard with fitted interior. *Est. £40 - £60.*

519. A massive oak carved bookcase with mirrored panelled top supported by four columns, the base set with lion masks above four doors on pedestal base. Approx. 40 cms x 180 cms. *Est. £200 - £250.*

520. A small mahogany two drawer writing table on turned supports. *Est. £30 - £50.*

521. A good Georgian olive wood tripod table, the top inset with triangular panels on graduated and reeded support to three feet. *Est. £200 - £250.*



522

522. A good 17th Century and later oak carved hall cupboard, the front and sides with carved panels and reeded decoration to turned supports and panelled stretcher. *Est. £400 - £600.*

523. A good oak Gothic style hall cupboard. *Est. £50 - £80.*

524. An oak carved hall stand with bobbin supports and mirrored back. *Est. £80 - £100.*



525

525. A Georgian oak bureau with herringbone inlay above two long and two short drawers on bracket feet. *Est. £100 - £150.*

526. A good oak Georgian style drop leaf table together with matching chairs, cane slip-in seats together with a three drawer side board. *Est. £200 - £250.*

527. A good set of four Antique rosewood tables on reeded supports on four bracket feet. *Est. £100 - £150.*

528. A mid 18th Century oak long cased clock with brass dial by Samuel Wright. *Est. £300 - £350.*

529. An 18th Century mahogany mirror with gilded decoration. *Est. £70 - £90.*

530. NATHAN. A modern three piece Nathan land unit of three sections, together with a matching TV stand. *Est. £100 - £150.*



532



531

531. A good quality amboyna sewing / games table with fitted interior and turned stretcher. *Est. £250 - £300.*

532. GILLOWS: A good pair of library tables with three drawers on graduated and reeded supports. Approx. 80 cms x 186 cms. *Est. £1200 - £1500.*

533. A good large oak carved hall stand with mirrored plates and two drawers on turned supports. *Est. £150 - £200.*

534. An attractive Continental triple door wardrobe on bracket feet with swag decoration. *Est. £250 - £350.*



535

535. A G-plan oval occasional table. *Est. £60 - £80.*

536. An oval mahogany loo table. *Est. £100 - £150.*

537. A mahogany hall cupboard with panelled doors and single drawer. *Est. £100 - £150.*

538. A good mahogany two door wardrobe on pedestal base. *Est. £100 - £150.*

539. A good oak carved hall table with moulded back. *Est. £60 - £80.*

540. A Georgian mahogany corner washstand. *Est. £40 - £60.*

541. A mahogany and brass mounted writing slope. *Est. £50 - £80.*

542. A Georgian mahogany corner cupboard. *Est. £40 - £60.*

543. A mahogany corner cupboard with shelf decoration and drawer. *Est. £40 - £60.*



544

544. A set of four Continental chairs with brass mounts and leather back. *Est. £60 - £80.*

545. A small oak blanket box with carved decoration. *Est. £30 - £40.*

546. A small reproduction glazed bookcase. *Est. £30 - £50.*

547. A reproduction envelope card table on turned supports. *Est. £40 - £60.*

548. An 18th Century walnut veneered chest of two short and three long drawers with engraved brass handles and quarter veneers to top on bracket feet. *Est. £350 - £400.*

549. An 18th century walnut veneered chest of three long drawers and bracket feet with later mahogany veneered and glazed top. *Est. £400 - £500.*

550. A tall slim walnut chest of six drawers. *Est. £50 - £60.*

551. A satinwood stick back Windsor chair. *Est. £50 - £60.*



552

552. A late 17th Century oak carved coffer with plank top. *Est. £250 - £300.*

553. A small 19th Century pine stool. *Est. £25 - £35.*

554. An Antique oak panelled cradle with hinged top. *Est. £200 - £250.*

555. A good large reproduction striking grandfather clock with glass panelled front. *Est. £100 - £150.*

556. A good reproduction butler's tray on stand. *Est. £30 - £50.*

557. A gilt overmantle mirror with leaf decoration. *Est. £100 - £150.*

558. A good oak Continental four drawer bureau with fitted interior and cupboard to base. *Est. £100 - £150.*

559. A Georgian mahogany three drawer desk on tapering supports. *Est. £40 - £60.*

560. A Continental hardwood two drawer occasional table. *Est. £60 - £80.*

561. A large oak Continental sideboard with two drawers and two doors on pedestal base. *Est. £50 - £80.*

562. A late 18th Century serpentine mahogany dressing table mirror. *Est. £100 - £150.*

563. A 19th Century Japanese flower carrier with woven mounts. *Est. £50 - £60.*

564. An early 18th Century bow fronted walnut corner cabinet with secret compartments. *Est. £250 - £300.*



565

565. An early 18th Century rosewood occasional table with string inlay on tapering supports. *Est. £200 - £250.*

566. An early 19th Century washstand, the hinged top revealing a mirrored plate and compartment, and the base fitted with six flush drawers. *Est. £400 - £500.*

567. A large Continental oak carved glazed two piece bookcase mounted with figures and scrolls, the base with two doors and two drawers. *Est. £250 - £300.*

568. A good leather button back armchair. *Est. £40 - £50.*

569. A large oak nine drawer twin pedestal desk. *Est. £50 - £80.*

570. A good oak drawer leaf table and four chairs. *Est. £60 - £80.*

571. A large Georgian mahogany secretaire bookcase with bevelled glass doors, the full front revealing a fitted interior and cupboard base on bracket feet. *Est. £300 - £350.*

572. A Georgian oak corner cupboard with brass hinges. *Est. £30 - £50.*

573. A mahogany banjo barometer with string inlay and silver dial. *Est. £100 - £150.*

574. A walnut two door three piece bedroom suite with brass handles. *Est. £60 - £80.*

575. A good oak three piece Bergère suite. *Est. £50 - £80.*

576. A good quality two door burr walnut cupboard with fitted interior. *Est. £150 - £200.*

577. An oak banjo barometer with carved decoration by Brooker & Jepson. *Est. £30 - £50.*

578. A good large heavy yellow ground carpet with floral decoration. *Est. £80 - £120.*

NOW ACCEPTING ENTRIES FOR FORTHCOMING AUCTIONS. CALL NOW FOR A FREE, NO OBLIGATION VALUATION.

**NEXT AUCTION:
GENERAL ANTIQUES SALE
ON THURSDAY 16TH JUNE
COMMENCING AT 11.00 AM**

TERMS AND CONDITIONS OF SALE

Whittons carries on business with bidders, buyers and all those present in the auction room prior to or in connection with a sale on the following general conditions and on such other terms, conditions and notices as may be referred to herein.

1. BIDDING PROCEDURES AND THE BUYER

a) Bidders are required to register their particulars prior to bidding and to satisfy any security arrangements before entering the auction room to view or bid. We do not accept bids from any person who has not completed and delivered to us one of our Bidding Forms. You will be asked for photographic proof of identity, residence and references. Bids will not be accepted if you fail to provide sufficient identification when asked to produce it. We may also ask for a deposit to be paid prior to bidding. We may refuse entry to a Sale to any person even if that person has completed a Bidding Form.

b) The maker of the highest bid accepted by the Auctioneer conducting the sale shall be the buyer at the hammer price and any dispute regarding a bid shall be made and settled at the Auctioneer's absolute discretion, and may reoffer the Lot during the course of the auction or otherwise. The Auctioneer shall act reasonably in exercising this discretion. The Auctioneer's decision is final.

c) Bidders shall be deemed to act as principals.

d) Once made no bid can be withdrawn.

e) Our right to bid on behalf of the seller is expressly reserved up to the amount of any reserve and the right to refuse any bid is also reserved.

2. INCREMENTS

a) Bidding increments shall be at the Auctioneer's sole discretion.

3. THE PURCHASE PRICE

a) The buyer shall pay the Hammer Price together with a premium thereon of 15% plus VAT on the premium at the rate imposed by law on all lots. Lots purchased online will incur an additional charge in the sum of 3% of the Hammer Price plus VAT at the rate imposed by law.

4. VALUE ADDED TAX

a) Where a lot is marked with an asterisk (*), VAT will be payable at the standard rate as imposed by law on the Hammer Price as well as being added to the buyer's premium.

b) Where a lot is marked with a double asterisk (**), VAT will be charged at a reduced VAT rate (currently 5%) to the gross price of that lot being the Hammer Price plus the buyer's premium.

c) Where no asterisk is marked against a lot, no VAT is payable on the Hammer Price, and is deemed to have been sold under the Auctioneer's Margin Scheme. VAT included within the premium is not recoverable as input tax.

5. PAYMENT

a) Your obligation to pay for a lot occurs when the Auctioneer's hammer has fallen in respect of the lot.

b) Immediately a lot is sold you will give to us, if requested, proof of identity and pay to us the total amount due in cash or in such other way as agreed by us. Any payments by

you to us may be applied by us towards any sums owing from you to us on any account whatever without regard to any directions of you or your agent, whether express or implied.

c) No cash payments will be accepted over £6000.00 (Six Thousand Pounds Sterling).

d) Payment is acceptable in cash, credit or debit card. A handling charge of 2% will be added to all purchases made by credit card. Payments made by debit card will incur no extra charge. Payment can be made by direct bank transfer into our bank account.

e) Payment of the purchase price and all other sums payable by you to Whittons must be made in the currency in which the sale was conducted within seven working days following the sale. Payment must be received in cleared funds by the seventh working day following the sale. Failure to provide cleared funds within this time may result in remedies being exercised as stated in condition 7.

6. TITLE AND COLLECTION OF PURCHASES

a) Ownership of the lots purchased shall not pass to the buyer until payment has been made in full to us of the total amount due, to include all premiums, charges and postal costs where applicable, and received in cleared funds by Whittons.

b) Responsibility of the lot passes to the buyer at the fall of the Auctioneer's hammer. The seller will no longer be responsible for the lot thereafter. The buyer will indemnify the seller and keep the seller fully indemnified from and against all claims, proceedings, costs, expenses and losses arising in respect of any injury, loss and damage caused to the lot after the fall of the Auctioneer's hammer until the buyer obtains full title to it.

c) You shall, at your own risk and expense take away any lots that you have purchased and paid for in full, not later than seven working days following the sale or upon the clearance of any cheque used for payment after which you shall be responsible for any removal, storage and insurance charges. No purchase can be claimed or removed until it has been paid for in full.

d) Title to the lot remains in and is retained by the seller until payment has been made in full to us of the total amount due, to include all premiums, charges and postal costs where applicable, and received in cleared funds by Whittons.

e) All items are held at the risk of the buyer. If they are not removed within fourteen working days of the sale the auctioneers will instruct a local carrier to remove them for storage. The buyer will be responsible for paying all charges incurred and for making arrangements in advance for the removal of items from their store after payment of their charges and on production of our receipt for the items.

7. REMEDIES IN THE EVENT OF NON-PAYMENT OR PURCHASES NOT BEING COLLECTED ON TIME

If any lot is not paid for in full and taken away in accordance with these conditions or if there is any other breach of these conditions, we, as agent for the seller and on our own behalf, shall at our absolute discretion and without prejudice to any other rights we may have be entitled to exercise one or more of the following rights and remedies: To proceed against you for damages for breach of contract;

a) To rescind the sale of that lot and/or any other lots sold by us to you;

b) To resell the lots (by auction or private treaty) in which case you shall be responsible for any resulting deficiency in the total amount due (after crediting any part payment and adding any resale costs). Any surplus so arising shall belong to the seller;

c) To remove, store and insure the lot at your expense and, in the case of storage, either at our premises or elsewhere;

d) To charge interest at a rate not exceeding 1.5% per month on the total amount due to the extent it remains unpaid for more than seven working days after the sale;

e) To retain that or any other lot sold to you until you pay the total amount due

f) To reject or ignore bids from you or your agent at future auctions or to impose conditions before and such bids shall be accepted.

g) To apply any proceeds of sale of other lots due in future becoming due to you towards the settlement of the total amount due and to exercise a right to possession (lien) of any of your property in our possession for any purpose until the debt due is satisfied.

h) We shall, as agent for the seller and on our own behalf pursue these rights and remedies only so far as is reasonable to make appropriate recovery in respect of breach of these conditions.

8. THIRD PARTY LIABILITY

All members of the public enter our premises at their own risk. They must make themselves aware of all security and fire arrangements in the building and to note the layout of the accommodation. Accordingly neither the Auctioneer nor our employees or agents shall incur any liability for death or personal injury (except as required by law by reason of our negligence) or similarly for the safety of persons visiting prior to or at a sale.

9. RIGHT TO REFUSE ENTRY

Whittons shall have the right at our discretion, to refuse admission to our premises or attendance at our auctions by any person.

10. COMMISSION BIDS

We will, if so instructed, execute bids on a buyer's behalf. The bid must be received by us no later than one hour prior to the commencement of the sale for which the lot is being sold. The bid must be clearly written or typed, and must have the full name, address and telephone number of the person bidding, and signed by the person making the bid. Neither the Auctioneer nor our employees shall be held responsible for any failure to do so save where such failure is unreasonable. Where two or more commission bids are received at the same price, the Auctioneer reserves the right and absolute discretion to choose which bid shall prevail. It will be assumed that the prospective buyer has carefully inspected the lot and has satisfied themselves as to its condition prior to leaving the commission bid. No bids can be retracted once the item has been sold.

11. WARRANTY OF TITLE AND AVAILABILITY

The seller warrants to the auctioneers and the buyer that the seller is the true owner of the property consigned or is properly authorised by the true owner to consign it

WHITTONS AUCTIONS

for sale and is able to transfer good title to the property free from any third party claims.

12. AGENCY

The auctioneers normally act as agent only and disclaim any responsibility for default by sellers or buyers.

13. TERMS OF SALE

The seller acknowledges that Lots are sold subject to the stipulations of these conditions in their entirety and on the terms of consignment as notified to the consignor at the time of the entry of the lot.

14. DESCRIPTIONS

Whittons will not be held responsible for misrepresentation, and any wording or description either spoken written discussed published or otherwise shall not form the basis of any contract. Items are described as opinion only, and whilst due diligence is taken to make accurate descriptions, it may be impracticable to ensure accuracy in its entirety. All items are therefore sold as seen and prospective buyers must inspect view and take their own independent expert advice should they so wish before bidding on any item in any sale and must satisfy themselves as to the accuracy of any description applied to a lot. Prospective buyers bid on the understanding that representations or statements as to authorship genuineness origin date age provenance condition size shape weight colour etcetera are opinions only. Subject to the foregoing neither we the auctioneer nor our employees or agents nor the seller accept liability for the correctness of such opinions and all conditions and warranties, whether relating to description, condition or quality of lots, express, implied or statutory, are hereby excluded. Private treaty sales made under these conditions are deemed to be sales by the auction for purposes of consumer legislation.

Notwithstanding this condition any Lot which proves to be a deliberate forgery as defined may be returned to us by you within 14 days of the auction provided it is in the same condition as when bought, and is accompanied by particulars identifying it from the relevant catalogue description and a written statement of defects. If we are satisfied from the evidence presented that the Lot is a deliberate forgery we shall refund the money paid by you for the Lot including any buyer's premium provided that

a) if the catalogue reflected the accepted view of scholars and experts as at the date of sale or

b) you personally are not able to transfer a good and marketable title to us, you shall have no rights under this condition.

The right of return provided by this Condition is additional to any right or remedy provided by law or by these Conditions of Sale.

15. ONLINE BIDDING

Whittons may offer an online bidding service via www.the-saleroom.com for bidders who cannot attend the sale. In completing the bidder registration on www.the-saleroom.com and providing your credit card details and unless alternative arrangements are agreed with Whittons you:

a) authorise Whittons if they so wish to charge the credit card given in part or full payment including all fees for items successfully purchased in the auction via www.the-saleroom.com and

b) confirm that you are authorised to provide these credit card details to Whittons through www.the-saleroom.com and agree that Whittons are entitled to dispatch the goods to the card holder name and card holder address provided in fulfilment of the sale.

Please note that any lots purchased via the-saleroom.com live auction service will be subject to an additional 3% commission charge + VAT at the standard rate imposed on the hammer price. Buyers registering to bid through www.the-saleroom.com must submit credit/debit card details to register. Whittons will take a deposit of maximum £500.00 sterling from the registered credit / debit card at the discretion of the auctioneer. If the buyer is unsuccessful this deposit will be refunded. If successful the deposit will be deducted from the final invoice. The deposit will be subject to variables in exchange rates and bank charges that the buyers' bank might levy. The buyer will be liable for such charges.

16. CHEQUES

Cheques will only be accepted for payment at the auctioneer's discretion. No purchases will be removed from the saleroom unless cleared funds have been received by us. Any prospective purchasers who wish to pay by cheque must inform the auctioneers at least 7 working days before the sale. It will be at the auctioneer's discretion whether to take a cheque in lieu of prospective purchases prior to the sale and allowing for clearance of the cheque. If you are later unsuccessful in your purchase, the amount of your cheque will be refunded. Payment in cheque will not be acceptable on the day of the sale if prior arrangement has not been made with the auctioneer but if you wish to pay using this method then your purchases will be withheld until full clearance of the cheque has been granted. Only authorised payments by card or cash will be allowed to allow removal of goods on sale day.

17. TELEPHONE PAYMENTS

Payments will not be accepted if made at the telephone for invoices of more than £300.00 unless the buyer is known to the auctioneer. Card payments can be made in person or by bank transfer cash up to £6000.00 (Six Thousand Pounds Sterling).

18. SELLER'S COMMISSION AND CHARGES

Commission is charged at 15% plus VAT at the standard rate on the hammer price. Items which sell for less than £20.00 will incur a commission charge of £5.00 plus VAT at the standard rate. No charge will be made for items which fail to sell. Withdrawn lots may incur an administration charge if withdrawn once the item has been published for sale. No charges are made for catalogue illustration photography or advertising unless special illustration photography or advertising is deemed necessary and not without the consent of the vendor. A charge of £3.00 per item will be charged per item for each item that requires electrical testing.

19. RESERVES

Items will only be accepted with reserve which, in the auctioneer's opinion, are likely to realise at least £20.00 or more. Any item worth less than this value will be deemed to be entered for sale without reserve. Any items which are taken with a reserve price will be accepted on the basis that the auctioneer will have discretion to sell that item for 10% less than the reserve if a buyer at that price exists on the day. Whittons can

refuse to accept any item for sale where, in the auctioneer's opinion, the reserve price suggested by the seller is too high and/or the item would not sell.

20. SELLER'S CONDITIONS

- a) All sellers must sign the declaration confirming conditions of sale on the receipt which is given to you when you submit goods to us for sale. All items handed over to us are assumed to be given to us for the purpose of entering those lots for sale by auction.
- b) All sellers must sign to confirm that they are the true owners of the goods entered for sale and that they have legitimate title to those goods free of any encumbrance and free from any third party or that they have authority to dispose of the goods on behalf of the true owner and are able to transfer good and marketable title to the property free from any third party claims.
- c) All goods entered for sale must comply with all safety regulations under the Consumer Protection Act and the Furnishing Fire / Safety Regulations 1988.
- d) The seller authorises Whittons to deduct commission at the rates quoted and by the signing the form, the seller is deemed to have accepted the terms and conditions of sale.
- e) The seller has a duty to disclose all defects restorations or alterations to the goods at the time they are entered for sale and is duty bound to bring such defects restorations or alterations to auctioneer's attention in writing. Failure to do so notwithstanding any description of the goods given by the auctioneers can result in the sale being rescinded and the seller being responsible for all allied costs incurred by the auctioneer and the buyer.
- f) The seller warrants in respect of any item of mechanical or electrical equipment that it is:
 - a. in working order
 - b. reasonably fit for the purpose for which it is designed or adapted
 - c. that it can be used safely and without risk of causing injury or damage and
 - d. will indemnify Whittons against any loss or damage suffered in consequence of any breach of the above warranty and undertaking.
- g) The Vendor gives Whittons full and absolute right to photograph and illustrate any lot placed with them for sale and to use such photographs and illustrations at any time at their absolute discretion whether or not in connection with the auction.
- h) Sellers selling any assets of their business must disclose whether they are registered for value added tax (VAT) at the time the goods are presented for sale and disclose the VAT registration number and indicate clearly whether the goods are to be sold under the margin scheme and where this is the case, VAT will not be recoverable by the seller.

English law applies to the interpretation of these Conditions.

3 1/2" PERFECT

A Hardy Product
by
HARDY OF ENGLAND

BY APPOINTMENT
TO THE LATE
KING GEORGE V. 1911-1936
TO THE
SERVICER OF WALES
Hardy's
THE WORLD'S
ANGLING SPECIALISTS
ALNWICK,
ENG.
OWNER





THE FINE ART AUCTION ROOMS

DOWELL STREET · HONITON · DEVON EX14 1LX

01404 517000 · 01392 345454

INFO@WHITTONSAUCTIONS.CO.UK

WWW.WHITTONSAUCTIONS.CO.UK