

Lot No **Description**
1 A pair of Royal Doulton vases together with one other.



2 Royal Doulton vases, candlestick etc.



3 An oak two drawer side table.



4 Baccarat: A good glass decanter.



5 A Chinese blue and white vase and cover. (Slight damage).



6 A collection of stoneware bottles.



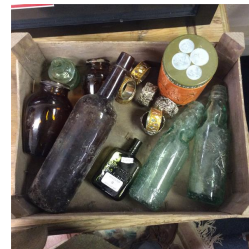
Lot No **Description**
7 A Continental hardwood side table.



8 A soda syphon, bottles etc.



9 Old lemonade bottles etc.



10 Old bottle crates and bottles.



11 A garden chiminea.



12 An Edwardian inlaid table.



Lot No **Description**
13 An advertising plaque.



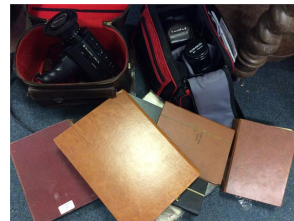
14 A rosewood framed sampler.



15 A rosewood piano stool together with a mirror.



16 Two camcorders together with stamp albums.



17 A set of four Edwardian chairs.



18 A pair of brass vases.



Lot No **Description**
19 A rosewood caddy, Royal Doulton glasses etc.



20 Brass candlesticks.



21 Three pairs of brass candlesticks.



22 A large brass inkstand.



23 An Art Deco cigarette dispenser.



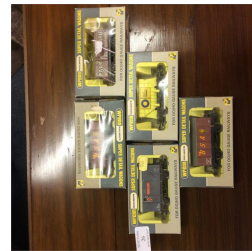
24 A large plated salver.



Lot No **Description**
25 A large silk Oriental tapestry.



26 Five Wrenn rolling stock wagons.



27 A small pembroke table.



28 Two resin mounted crests.



29 An Antique oak coffer.



30 A Royal Worcester part tea service.



Lot No

Description

31 Silver mounted coasters.



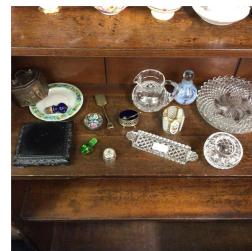
32 Six decorative cabinet cups.



33 Two shelves of decorative cabinet cups and saucers.



34 A silver mounted salt, glass trays etc.



35 Decorative miniature cabinet cups and saucers.



36 A small four tier oak bookcase.



Lot No **Description**
37 Two carved bedside cabinets.



38 Two pairs of Oriental vases.



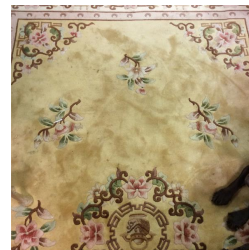
39 An oak hall stand.



40 A collection of unframed maps.



41 A large patterned rug.



42 A pair of carved chairs.



Lot No

Description

43

A pine two drawer desk.



44

A pair of plated candelabra.



45

A plated cruet in the form of a dog.



46

A stylish Edwardian clock.



47

A mahogany mantle clock.



48

A small painted pine cupboard.



Lot No **Description**
49 A collection of watercolours and paintings.



50 A silver topped dressing table jar.



51 A silver embossed top mirror.



52 A pine hinged top commode.



53 A pair of Eastern carved lamps.



54 Advertising ashtrays together with stoneware bottles.



Lot No**Description**

55

A leather briefcase.



56

An Edwardian inlaid dressing chest.



57

First day covers etc.



58

A brass mounted dressing table set.



59

A mahogany five drawer chest.



60

Decorative china ware etc.



Lot No **Description**
61 A collection of pewter ware, snuffers etc.



62 A Spode blue and white fruit bowl, decanter etc.



63 An unusual brass mounted tapestry.



64 Cottage ware teapots etc.



65 A walnut dressing chest.



66 A walnut dressing chest.



Lot No **Description**
67 A Royal Doulton cabinet cup and saucer, brass trivet etc.



68 A large dinner service.



69 A pole screen.



70 Two pedestal tables.



71 A mahogany twin pedestal desk.



72 A mahogany toilet mirror together with one other.



Lot No

Description

73

Four black dolls.



74

A plated tea service, old jug etc.



75

A large plated cutlery service.



76

A Georgian mahogany toilet mirror.



77

A pair of Royal Doulton miniature vases together with other mugs etc.



78

A white painted display cabinet.



Lot No

Description

79

A collection of eight meat domes.



80

An elm twin pedestal writing desk.



81

Decorative pottery vases etc.



82

A oak reproduction chest of four drawers.



83

A good pair of framed and glazed watercolours.



84

An Evander Holyfield boxing glove in boxed frame, complete with authenticity certificate..



Lot No

Description

85 A pair of Georgian dining chairs with slip in seats.



86 A Roberts radio together with a Hacker radio.



87 A good butchers block on stand.



88 A coffin stool together with one other.



89 A flamboyant gilt mirror.



90 A leatherette box, an old charger and unframed pictures.



Lot No

Description

91 A cocktail shaker, jelly mould etc.



92 A silver Chinese walking stick together with one other.



93 An early pottery fruit bowl.



94 Four lemonade bottles in basket.



95 A box containing jewellery, cameras, postcards etc.



96 A Royal Doulton biscuit cannister, Staffordshire cow etc.



Lot No **Description**
97 A painted single drawer dressing chest.



98 A painted serpentine front three drawer chest.



99 An unusual pottery centrepiece.



100 A painted single door cupboard.



101 A Clarice Cliff pin dish together with a Poole vase, collectors' plates etc.



102 A small gilt Baboola mirror.



Lot No

Description

103

A painted chest of four drawers.



104

Waterford: A large fluted glass bowl.



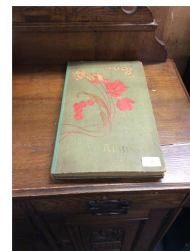
105

A collection of stamp albums.



106

A good Antique postcard album.



107

A stylish oak panelled sideboard.



108

A writing slope together with daguerreotypes.



Lot No **Description**
109 An old bible.



110 A miniature tea service on tray.



111 An Antique mahogany chest of six drawers.



112 Royal Doulton vases, cruet etc.



113 An oak filing chest together with two stoneware bottles.



114 A decorative tea service.



Lot No **Description**
115 A brass mounted commemorative vase.



116 A shagreen box together with other inlaid boxes.



117 A Beswick dog, a Spode money box, corkscrew etc.



118 A set of four framed and glazed bird prints.



119 Decorative soup bowls etc.



120 A good old postcard album.

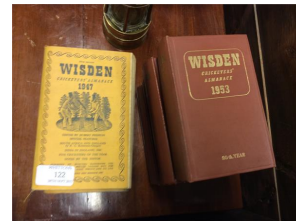


Lot No**Description**

121 An early Ackroyd and Best miners lamp. Number 029. Stamped to base.



122 Wisden Cricketer's Almanacs. Original hardbacks and paperbacks. Dates as follows: 1947, 1948, 1950, 1951, 1952, 1953 and 1954.



123 A large Madeira lace tablecloth. Approx. 9 ft x 5ft.



124 A collection of lace tablecloths and place mats.



125 Silver mounted scent bottles etc.



126 A collection of old stamp albums.



Lot No

Description

127 A mahogany chest of five drawers.



128 A chest of four drawers.



129 A collection of Carlton ware leaf dishes.



130 Two pairs of mahogany hoop back chairs.



131 A mahogany reproduction Davenport.



132 A pair of 18 carat MOP and diamond cufflinks and stud. Approx. 8.6 grams. (Slight damage).



Lot No **Description**
133 A pair of gilt engraved lorgnettes with spring mechanism.



134 A pair of late Victorian silver earrings together with other silver earrings.



135 A pair of unusual crystal cufflinks on gilt suspension chains.



136 An Antique blue and white cup.



137 A modern diamond inset wristwatch by Ingersoll.



138 A modern diamond inset wristwatch by Ingersoll.



Lot No **Description**
139 An 18 carat diamond single stone mounted as a pendant.



140 A silver engine turned hinged cigarette box.



141 A bone mounted dressing table box.



142 Continental silver teaspoons.



143 A wax decorated rectangular box.



144 A silver mounted dressing table bottle with lift off cover.



Lot No

Description

145 Silver candlesticks, inkwell etc.



146 A gent's Ingersoll wristwatch with gold mounts.



147 Tissot: A gent's stainless steel wristwatch within a fitted box.



148 Three boxed brass sporting medallions.



149 A lady's 9 carat wristwatch on mesh strap.



150 A stylish gilt bracelet together with a brooch etc.



Lot No **Description**
151 An oval cameo of a lady's head in gold frame.



152 Small early shillings and Maundy money.



153 A heavy gold gem set ring contained within a box.



154 A sapphire and pearl stick pin together with a brooch.



155 Watch chains, Continental necklaces etc.



156 Silver mounted pencils, albert chains etc.



Lot No

Description

157

An old pipe and a cloisonné dish.



158

A collection of old silver mounted scent bottles, etc.



159

A box containing various wristwatches.



160

A box containing numerous costume jewellery.



161

A bag containing old spectacles, brooches etc.



162

A heavy gold and tanzanite seven stone ring. Approx. 3.6 grams.



Lot No **Description**
163 A 9 carat garnet five stone ring in claw mount. Approx. 2.3 grams.



164 A 9 carat opal and garnet cluster ring in claw mount. Approx. 5.9 grams.



165 An unusual watch key in the form of a pistol.



166 An oak pot cupboard retailed by Kean and Scott of Birmingham.



167 A pair of good decorative figures mounted with flowers.



168 An oak six tier bookcase.



Lot No

Description

169

A collection of black dolls.



170

A Georgian cross banded Sutherland table.



171

Ercol: A pair of rail back chairs.



172

A set of six pine chairs.



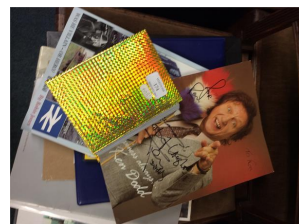
173

A satinwood commode.



174

A quantity of signed autographs etc.



Lot No **Description**
175 Decorative china ware, Goebel figure etc.



176 Silver mounted knives, brass candlesticks, costume jewellery etc.



177 Three carved soapstone figures.



178 An Art Deco style oak bookcase.



179 A large Masons dinner service.



180 Soapstone carvings of Buddhas.



Lot No **Description**
181 A small four-fold screen together with soapstone figures etc.



182 A small mahogany pot cupboard together with an oak occasional table.



183 Two Royal Doulton jugs together with an inkwell.



184 Ironstone decorative china ware etc.



185 A set of five oak dining chairs.



186 A tapestry rug.



Lot No

Description

187

A mahogany chest of five drawers.



188

A Masons cheese dish, books and elephant figures.



189

A painted bookcase together with one other.



190

A mahogany toilet mirror.



191

A collection of brassware.



192

A collection of cigarette boxes, binoculars etc.



Lot No

Description

193

A collection of good blue and white china, clocks, glassware etc.



194

Six shelves of books.



195

A blue and white willow pattern tureen together with other decorative china.



196

A framed and glazed watercolour of a river scene.



197

A large collection of plated cutlery.



198

An Oriental bowl together with two vases.



Lot No **Description**
199 A large wall clock.



200 Three Oriental vases.



201 A framed and glazed picture of The Great Exhibition.



202 A large collection of stoneware plaques.



203 An elm refectory table.



204 A large thick oak refectory table.



Lot No

Description

205 Two carved ivory cameos.



206 An agate mounted scroll decorated brooch.



207 A pair of gilt and MOP cufflinks.



208 A small gold pendant on chain together with a gold brooch.



209 A gold framed miniature of a mountain scene.



210 An oval miniature of an Indian palace.



Lot No **Description**
211 A small rectangular miniature of a baby in micro-mosaic frame.



212 A brass plaque in the form of warriors in high relief.



213 Old Continental printers blocks.



214 A massive blue and white Spode kettle.



215 A collection of motorcycle memorabilia.



216 A pair of glazed cabinets.



Lot No

Description

217

A Laura Ashley rug.



218

A large gilt framed Antique mirror.



219

A walnut writing box, flat irons etc.



220

A collection of good stem glasses together with Caithness paperweights.



221

A framed and glazed butterfly wing tray.



222

A Loom chair.



Lot No

Description

223

A mourning gown together with another stripey dress.



224

An Arabic white djellaba.



225

An old fur coat.



226

A reflecting galvanometer in wooden travelling box.



227

A crocodile skin handbag together with other handbags.



228

A collection of prints, mirror etc.



Lot No **Description**
229 A group of three large gilt framed Balinese silks.



230 A group of seven pictures of Oriental dancing ladies .
Acrylics on silk.



231 A group of four old fans.



232 A collection of coins and paper money.



233 A silver open faced pocket watch.



234 A small gold ring together with a gold pendant.



Lot No **Description**
235 A gilt locket together with a silver medallion etc.



236 Costume jewellery, lighter etc.



237 A collection of miniature medals.



238 A small gold and pearl pendant on fine link chain together with matching earrings.



239 A large model of a Sopwith Pup aircraft.



240 An oak carved barometer.



Lot No**Description**

241

A boxed, as new, petrol strimmer.



242

A large collection of wooden crates.



243

An AA badge, Oxo tin, old tin money box, and two clocks.



244

A collection of stamp albums, cigarette cards, and a 1941 Stanley Gibbons stamp catalogue.



245

A selection of various prints.

246

A selection of various prints.

Lot No**Description**

247

A selection of various prints.

248

Clarice Cliff: A small pink cream jug and saucer. Both marked to base and impress mark 40A.

