

**Lot No**      **Description**

1                  A good brass embossed inkstand.



2                  A pair of Sheffield plate embossed coasters.



3                  A Bunnykins figure and two Beatrix Potter figures.



4                  An oak twin pedestal desk with leather inset top.



5                  A good mahogany decorative hall table.



6                  An attractive Edwardian glazed cabinet.



**Lot No**

**Description**

7

A stylish chair with floral decoration.



8

A pair of Antique lions.



9

An Antique oak corner cupboard on stand.



10

Four good advertising mirrors.



11

A Royal Doulton blue glazed bowl together with four decorative plates.



12

A mahogany three tier cake stand.



**Lot No**      **Description**  
13              Three Antique bears.



14              A pair of good watercolours in gilt frames.



15              A good collection of plated wares.



16              Wooden planes, corkscrews etc.



17              A mahogany oval mantle mirror.



18              Good Wedgwood, trinket boxes etc.



**Lot No**      **Description**  
19              A boxed set of good EPNS fish eaters.



20              An Edwardian small carved wall bracket.



21              Two pairs of cast iron firedogs.



22              An Antique oak and mahogany large bow front corner cupboard.



23              A group of three upholstered folding chairs.



24              Two Royal Doulton Toby jugs.



**Lot No**      **Description**  
25              An Edwardian inlaid chair together with one other.



26              A pair of framed and glazed watercolours.



27              A good quality brass inlaid tray.



28              Two Antique oak fishing reels.



29              A good set of coloured glass etc.



30              An oak bow front glazed cabinet.



**Lot No**

**Description**

31 A blue and white meat dish.



32 Two Antique leather mounted briefcases.



33 A small Edwardian occasional table together with one other.



34 A pair of large tall brass candlesticks together with one other.



35 Three decorative Coalport figures.



36 Three large Oriental vases.



**Lot No****Description**

37

A carved Edwardian wall bracket.



38

An unusual Sutherland table.



39

A small Edwardian dome top mantle clock.



40

A pair of turned hardwood vases.



41

Four Beswick animals.



42

A group of three Royal Doulton Bunnykins.



**Lot No****Description**

43

A good Edwardian games table.



44

A good oak wall clock.



45

An Edwardian mahogany wall clock.



46

A pair of Edwardian oak carver chairs.



47

A good collection of stamp albums and first day covers.



48

A pair of unusual wooden stilts.





**Lot No****Description**

49

A collection of good Majolica.



50

A quantity of good blue and white ironstone plates.



51

An Edwardian glazed music cabinet.



52

A brass mounted and glass fireguard.



53

A heavy set of cast iron kitchen scales.



54

Three good Coalport figures.



**Lot No****Description**

55

A pair of Majolica lamps.



56

An attractive pedestal table with bobbin supports.



57

A heavy mahogany cylinder top desk.



58

A good decorative Victorian tea service, terrines etc.



59

A quantity of good cut glass.



60

Decorative Devon ware, Hontion pottery etc.



**Lot No**      **Description**

61              Clarice Cliff decorative vase etc.



62              Four Beswick birds together with a Royal Doulton figure.



63              Five good miniature Royal Doulton Toby jugs.



64              A large glazed bookcase.



65              A Georgian oak dining chair together with one other.



66              A Beswick figure of a terrier.



**Lot No**      **Description**  
67              A mahogany straight front corner cabinet.



68              Two model ships.



69              A quantity of stoneware jars.



70              Collection of good decorative china, stamps etc.



71              A pair of good decorated figures of cats.



72              Good models of corgi cars.



**Lot No****Description**

73

A bamboo occasional table together with a magazine rack.



74

A walnut and ebony mantle clock.



75

A Staffordshire figure of a house.



76

A good half fluted tea set on tray.



77

A collection of Hornsea figures.



78

Three Royal Doulton Toby jugs.



**Lot No**

**Description**

79

Two Beswick dogs.



80

A glazed wall mounted cabinet.



81

Six Antique blue and white plates.



82

A good Denby dinner service.



83

A Beswick figure of a cat together with one other.



84

A good quality cutlery service.



**Lot No****Description**

85

A collection of Staffordshire houses.



86

Two good Coalport figures together with a Royal Doulton figure.



87

A mahogany toilet mirror.



88

Oriental plates, vase etc.



89

A good set of etched glass.



90

A Georgian style mahogany chest of five drawers.



**Lot No****Description**

91

A good pair of elm bow back chairs.



92

Six good pieces of blue and white Spode.



93

Good butlers tray on stand.



94

A walnut four tier whatnot.



95

A good carved wooden trunk.



96

A good pair of framed and glazed tapestries.





**Lot No**      **Description**  
97              A mahogany hinged top writing box.



98              Two good large Oriental vases.



99              A tall Staffordshire figure of Robin Hood.



100             Three good Spode meat plates.



101             A good bronze Oriental vase.



102             A good inlaid wall clock with silver dial.



**Lot No**      **Description**  
103            A Pelham puppet together with a sewing machine etc.



104            A small prayer stool.



105            Good stamp albums.



106            A collection of good Spode cups and eggcups.

107            An oak four drawer desk with leather top.



108            An unusual two cylinder engine.



**Lot No****Description**

109

A bow back chair.



110

A pair of Antique steel scissors in box.



111

Some old Military badges, buttons etc.



112

Heavy modern silver flat link necklace.



113

Good carved napkin rings.



114

Coral necklace, gilt bangle etc.



**Lot No****Description**

115

A small French silver fob watch.



116

A bag containing costume jewellery.



117

A bag containing costume jewellery.



118

A bag containing costume jewellery.



119

A bag containing costume jewellery.



120

A box containing car badges etc.



**Lot No**      **Description**  
121            A silver mounted necklace together with matching ring.



122            A collection of old cruise menus.



123            Pocket watch, plated ware etc.



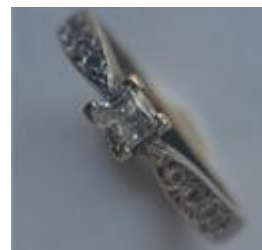
124            Three silver mounted scent bottles.



125            A box of silver mounted and other scent bottles.



126            A 9 carat single stone ring.



**Lot No****Description**

127

A white gold eight stone ring in claw mount.



128

A diamond mounted single stone ring in gold rub over mount.



129

A diamond half eternity ring set in gold.



130

A 9 carat two row ring in claw mount.



131







A heavy gold diamond and blue stone ring.



132

A 9 carat cluster ring in claw mount.



Lot No	Description	
133	A stylish gold ring with rub over mount in gold.	
134	A group of six heavy silver gem set rings.	
135	A heavy silver charm in the form of a train together with two others.	
136	A silver fancy link bracelet with engraved decoration.	
137	A silver flat link bracelet with ring clasp.	
138	A collection of costume jewellery, coins etc.	

**Lot No****Description**

139

Three pairs of silver sugar tongs.



140

A gold ring, brooch and locket.



141

Good decorative fans.



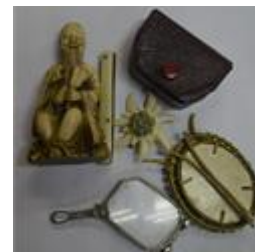
142

Decorative miniature cups etc.



143

A small netsuke etc.



144

An unusual mahogany Canterbury.





**Lot No**

**Description**

145

An Edwardian inlaid cabinet.



146

A small oak shield front cupboard.



147

A cane sided three piece settee suite.



148

Two stylish Art Deco mirrors.



150

An Antique painted rocking horse.



151

A large wooden four wheel cart.



**Lot No**      **Description**  
152            A good nest of three tables together with a pedestal table.



153            A silver three piece dressing table set.



154            A French marble top bedside cabinet.



155            A cased set of scales together with an old bell.



156            Good old cased calculator.



157            A mahogany drop leaf Sutherland table.



**Lot No**

**Description**

158 A collection of good Spode china.



159 A collection of good Spode china.



160 A Georgian mahogany hinged top card table.



161 Cased plated cruets, pewter mug etc.



162 A small rosewood rectangular top card table.



163 An extensive bone china tea service.



**Lot No**      **Description**  
164            A good pair of framed and glazed panelled watercolours.



165            A quantity of good Spode china.



166            A collection of good studio pottery.



167            A good reproduction display cabinet.



168            Two brass kettles and a copper coal bucket.



169            An oak drop leaf table.



**Lot No**      **Description**  
170            A good mahogany Georgian style pedestal table.



171            A small 'Phillips' advertising figure.



172            A plaster figure of a sailor.



173            A North British railway badge.



174            A mahogany Pembroke table.



175            Five advertising signs.



**Lot No**

**Description**

176 A concrete figure of an otter.



177 A mahogany filing unit.



178 An oak smokers table with brass mount.



179 A good cased cabinet of stuffed birds.



180 A mahogany nest of three tables.



181 Two framed and glazed watercolours of steamer ships.



**Lot No**      **Description**  
182              Old golfing woods etc.



183              A good glass and plated six bottle cruet.



184              A group of four Staffordshire houses.



185              An old barometer, instrument etc.



186              A mahogany three drawer chest on bracket feet.



187              A good glass centerpiece with matching drops.



**Lot No**      **Description**  
188              A good collection of blue and white Spode china.



189              A brass chestnut roaster, pottery items etc.



190              Two pairs of cast iron firedogs.



191              A good mahogany wall display unit.



192              A box containing a doll, horns etc.



193              Good Dresden, cabinet cups and saucers etc.





**Lot No**      **Description**  
194              Brass chargers together with a lakeside watercolour.



195              A good nest of three oak tables.



196              A mahogany glazed wall display cabinet.



197              Decorative floral flower scenters, cutlery etc.



198              A mahogany clock together with plated spoons etc.



199              A good Susie Cooper fruit set.



**Lot No**

**Description**

200 A pair of small circular silver candlesticks.



201 Decorative Masons china together with Oriental tea set etc.



202 A Beswick figure of a leopard together with a tiger.



203 An Edwardian inlaid dressing chest.



204 A collection of first day covers.



205 A group of seven boxed toy cars.



**Lot No**      **Description**  
206            An iron standard lamp together with one other.



207            A shelf containing cast iron Toby jugs.



208            Royal Doulton figures and others.



209            A good collection of blue and white Spode.



210            A collection of Alaskan carvings etc.



211            Four good mirrors.



**Lot No**      **Description**  
212            A Royal Standard fine bone china tea set.



213            A Royal Albert decorative tea service.



214            A Copeland Spode decorated tea service.



215            A pair of pine three drawer bedside chests.



216            A massive painted oval mantle.



217            A large silk jacket together with a fur coat.



**Lot No**      **Description**  
218              A large pine three drawer occasional table.



219              Good etched glass set.



220              A long unusual resin Scrimshaw.



221              A collection of bridle items.



222              A good Hornby train set.



223              A good enamelled 'BP' sign.



**Lot No****Description**

224

Four framed and glazed prints together with a Honiton lamp.

