

WHITTONS
AUCTIONEERS & VALUERS



SILVER, JEWELLERY, TOYS AND
RAILWAYANA AUCTION

25th May 2017



SILVER, JEWELLERY, TOYS AND RAILWAYANA AUCTION

THURSDAY 25TH MAY 2017

Commencing at 10.00am

Live Internet bidding via

the-saleroom.com

EACH LOT IS ILLUSTRATED ONLINE

VIEWING TIMES:

Sunday 21st May 10.00am - 1.00pm

Monday 22nd May 9.30am - 4.30pm

Tuesday 23rd May 9.30am - 4.30pm

Wednesday 24th May 9.30am - 4.30pm

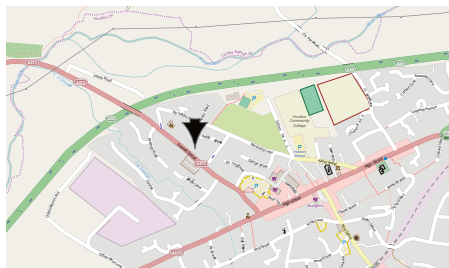
ALL COMMISSION BIDS AND TELEPHONE BIDS MUST BE REGISTERED WITH THE AUCTIONEERS BY 4.30 PM THE DAY BEFORE THE SALE

YOU MUST REGISTER TO BID. PHOTOGRAPHIC IDENTIFICATION REQUIRED.

A 10% DEPOSIT OF THE LOWER ESTIMATE OF THE LOT(S) ON WHICH YOU WISH TO BID IS REQUIRED FOR ALL TELEPHONE BIDS. FORMS ARE AVAILABLE TO DOWNLOAD FROM OUR WEBSITE.

PHOTOGRAPHIC ID REQUIRED FROM ANYONE WISHING TO VIEW THE JEWELLERY.

BUYERS PREMIUM 15% + VAT



**THE FINE ART AUCTION ROOMS
DOWELL STREET
HONITON
DEVON
EX14 1LX**

**01404 517000 · 01392 345454
info@whittonsauctions.co.uk
www.whittonsauctions.co.uk**

Order of sale

Thursday 25th May at 10.00 am

Silver 1 – 171

There will now be a 15 minute break.

Jewellery, Watches & Coins 176 – 401

There will now be a 15 minute break.

Pictures, Porcelain, Collectables, Toys & Furniture 402 – 726

Cover Illustrations

Front: Lot 480

Left: Lot 333

Silver



1

1. A rectangular swirl decorated picture frame with velvet back. Birmingham. By WG Ltd. Est. £50 - £80.

2. An attractive engraved vesta case with hinged top. Birmingham. By H&A. Approx. 26 grams. Est. £20 - £30.

3. A cased Georgian MOP fruit knife. London. By AH. Est. £20 - £30.

4. A silver mounted Bible together with other prayer books etc. Est. £20 - £30.

5. An attractively cased spirit decanter decorated with flowers and leaves together with matching glasses contained within a fitted box. Est. £450 - £500.

6. A child's rattle, fruit knife and a buckle. Est. £20 - £30.

7. A group of ten football medallions with scroll decoration. Approx. 78 grams. Est. £40 - £50.

8. A small gold medallion with loop top. Approx. 4.8 grams. Est. £40 - £50.

9. An Indian swirl decorated basket with gilt interior. Approx. 89.5 grams. Est. £40 - £60.

10. An oval Georgian style box with engine turned decoration and hinged top. Birmingham. By D&F. Approx. 53 grams. Est. £25 - £35.

11. A French Art Deco compact with reeded decoration and gold banding. Approx. 130 grams. Est. £40 - £60.

12. A pair of good boat shaped mustards with BGL and hinged tops. Chester. By SM&Co. Est. £50 - £60.

13. A small silver cream jug with fluted body. London. Approx. 102 grams. Est. £40 - £50.

14. LIFELONG: A good engine turned silver pencil. Est. £20 - £30.

15. A good quality half fluted mustard with hinged top and BGL. London. By G&H. Est. £60 - £80.

16. A good pair of Chinese spoons with engraved decoration, together with a silver ashtray, cigar cutter etc. Approx. 125 grams. Est. £40 - £50.

17. Two heavily embossed bright cut berry spoons with gilt bowls. Approx. 65 grams. Est. £25 - £35.

18. LIBERTY & CO: A stylish sugar bowl with textured body. Birmingham. Approx. 134 grams. Est. £100 - £150.

19. A pair of cast Indian spoons with swirl decoration and gilt body. Approx. 107 grams. Est. £70 - £80.

20. A scroll decorated soap box mounted with lion's head and hinged body. London. By IF. Approx. 127 grams. Est. £100 - £150.

21. An attractive tortoiseshell mounted cigarette box with wooden lining and silver inlay. Birmingham 1929. By WA. Est. £250 - £300.



21

22. ASPREY & CO: A large reeded glass match striker. Birmingham. Est. £30 - £40.

23. A cased two piece christening set. Sheffield. By H&W. Est. £20 - £30.

24. A small Continental silver gilt scent bottle in the form of a fish with pierced lid. Approx. 48 grams. Est. £20 - £30.

25. A set of six OE pattern coffee spoons. Birmingham. By BB Ltd. Est. £20 - £30.

26. A cased three piece cruet. Birmingham. By C&B. Est. £30 - £40.

27. A pair of Japanese plant pot holders mounted with flowers and leaves. Approx. 30 grams. Est. £20 - £30.

28. A large Monteith style bowl on spreading foot. Birmingham 1928. Est. £400 - £500.



29

29. A good Antique rattle with engraved decoration and coral teether. Est. £250 - £300.

30. A small reeded scent bottle on suspension chain with hinged top. Est. £30 - £50.



31

31. A good Victorian table bell of plain design with ivory handle. London 1894. Approx. 15 cms long. Est. £300 - £350.

32. A good Georgian style cream jug with bright cut decoration. Sheffield 1959. By EV. Approx. 190 grams. Est. £150 - £200.

33. A good pair of large berry spoons with gadroon rim and gilded bowls. Sheffield 1894. Approx. 168 grams. Est. £150 - £200.

34. A good quality silver gilt vinaigrette with floral decorated thumb piece and pierced grill. Birmingham 1829. By Taylor & Perry. Est. £400 - £450.

35. A pair of canoe shaped bonbon dishes with pierced bodies. London 1901. By C&S. Approx. 114 grams. Est. £100 - £150.

36. An octagonal hinged top tea caddy with gilded interior and reeded base. Est. £250 - £300.

37. A small silver Continental sugar bowl on three hoof feet together with one other. Approx. 140 grams. Est. £20 - £30.

38. A heavy silver four piece tea and coffee service with canted corners. Sheffield. By CB&S. Approx. 723 grams. *Est. £600 - £800.*

39. Two silver picture frames with scroll decoration. *Est. £30 - £50.*

40. A silver mounted and leather hip flask with hinged top. Sheffield. By JD&S. *Est. £20 - £30.*

41. A group of three silver mounted spill vases with wavy edges. *Est. £30 - £50.*

42. A silver hinged top vesta case with loop mount. Approx. 24 grams. *Est. £20 - £30.*

43. A small hinged top cigarette box mounted with thumb piece. *Est. £40 - £60.*

44. A good quality engraved scent bottle with hinged top. London. By SM. *Est. £30 - £50.*

45. An unusual silver mounted pipe with hinged top and fitted case. *Est. £40 - £60.*

46. Two silver mounted vesta cases together with a hinged top box. *Est. £30 - £50.*



47

47. A good pair of Georgian style tapered candlesticks with crested decoration. London 1895. By WC. *Est. £350 - £400.*

48. A good two piece Adams' style cruet. Birmingham. By F&C. Approx. 190 grams. *Est. £30 - £40.*

49. A pair of circular napkin rings with ball decoration. London. Approx. 51 grams. *Est. £20 - £30.*



50

50. A Continental cylindrical tea caddy decorated with flowers and figures. Approx. 208 grams. *Est. £100 - £150.*



51

51. An attractive Victorian engraved sugar basket. London 1874. Approx. 291 grams. *Est. £150 - £200.*

52. A Georgian wine funnel top with pierced decoration. *Est. £40 - £60.*

53. A pair of attractive silver and tortoiseshell menu holders. London 1913. *Est. £120 - £150.*

54. A Georgian silver baby's rattle and teether. *Est. £70 - £90.*

55. A set of three circular stylish menu holders. Chester 1912. Approx. 67 grams. *Est. £100 - £150.*



56

56. A good set of three leaf design wine labels on suspension chain. Est. £150 - £200.

57. A good set of three wine tickets in the form of letters with engraved decoration on suspension chains. London 1853. Approx. 43 grams. Est. £150 - £200

58. A pair of Georgian rectangular wine labels. London 1824. By TE. Est. £60 - £80.

59. A set of six silver teaspoons with reeded decoration. Sheffield. By CF. Est. £20 - £30.

60. A pair of swag decorated circular piano candlesticks. Est. £20 - £30.

61. A pair of attractive Continental spoons engraved with flowers. Approx. 67 grams. Est. £40 - £60.



62

62. A large helmet shaped cream jug decorated with flowers and leaves. London. By CC. Approx. 167 grams. Est. £100 - £150.

63. A heavy set of five fiddle pattern table forks. London. By WT. Approx. 437 grams. Est. £120 - £150.



64

64. An attractive pin cushion in the form of a tortoise with textured body. Birmingham 1905. By GS&TS. Est. £200 - £300.

65. A Continental seal top spoon engraved to back. Approx. 52 grams. Est. £30 - £50.

66. A pair of fiddle pattern sauce ladles. London. By JB. Approx. 162 grams. Est. £50 - £80.

67. An unusual spectacle case with leather effect and hinged top. Birmingham. By WHS. Approx. 57 grams. Est. £50 - £80.

68. A pair of silver gilt novelty figures of a lady and a gent sitting on a bench. Approx. 67 grams. Est. £30 - £50.

69. A small Georgian pierced pepper fitted with BGL. London. By TF. Est. £30 - £50.

70. A good pair of circular three bottle cruets on ball feet. Est. £80 - £100.

71. An Antique fiddle pattern caddy spoon with fluted bowl. London. By GW. Approx. 11 grams. Est. £20 - £30.

72. Two Georgian style caddy spoons with engraved decoration. Approx. 18 grams. Est. £20 - £30.

73. An unusual mantle clock with engraved decoration on bracket feet. Birmingham. By LE. Est. £200 - £250.

74. An unusual Irish potato ring decorated with flowers and scrolls. Dublin 1920. Approx. 113 grams. Est. £250 - £300.

80. A small glass inkwell with hinged top and engine turned decoration. Birmingham. By A Bros. Est. £40 - £60.

81. A heavy silver christening cup, the body decorated with scrolls and flowers. London. By GMJ. Approx. 152 grams. Est. £50 - £80.



75



82

75. An attractive pair of oval silver framed miniatures with hinged backs. Est. £80 - £100.

82. A good quality card box in the form of a sedan chair. London. By SJ. Est. £50 - £80.



76



83

76. A good Italian vase on three legs with lion mask handles. Approx. 168 grams. Est. £100 - £150.

83. LIBERTY & CO: A heavy tapered spill vase decorated with flowers and leaves. Birmingham 1913. Est. £180 - £220.

77. A small pierced decorated sweet dish mounted with flowers and leaves. Birmingham. By PJ. Est. £30 - £40.

84. Silver napkin rings, brooches and a matchbox holder. Approx. 77 grams. Est. £25 - £35.

78. A small hinged top silver box decorated with cherubs. Approx. 19 grams. Est. £20 - £30.

85. A small silver articulated fish together with a trophy cup. Approx. 64 grams. Est. £30 - £40.

79. A Continental hinged top box mounted with a castle. Approx. 23 grams. Est. £30 - £50.

86. A heavy Georgian chocolate pot. London 1783. By IK. Approx. 458 grams. Est. £140 - £160.

87. A Scottish Kings pattern sifter spoon. Edinburgh. By WM. Together with three others, various dates and makers. Approx. 110 grams. Est. £40 - £50.

88. A bag containing numerous button hooks, butter knives etc. Various dates and makers. Est. £20 - £30.

89. A good quality tortoiseshell desk clip embossed with infants. Chester. By GY&Co. Est. £250 - £300.

90. A miniature five piece tea and coffee service on tray. Birmingham 1973. Approx. 66 grams. Est. £150 - £200.

91. A pair of attractive ribbon decorated bonbon dishes with gilt interiors. Birmingham. By H&M. Approx. 136 grams. Est. £60 - £80.

92. A heavy silver half fluted cream jug with gilt interior. London. By CB. Approx. 228 grams. Est. £70 - £80.

93. A set of five modern silver wine labels with scroll decoration. Approx. 67 grams. Est. £40 - £60.

94. An unusual two branch silver mounted candlestick on tapering support. Sheffield. By WH. Est. £60 - £80.

95. A Georgian Antique tablespoon. London. By TW. Approx. 43 grams. Est. £30 - £50.

96. A small two handled porringer with gilt interior. Approx. 74 grams. Est. £30 - £50.

97. An attractively pierced sifter spoon decorated with leaves and flowers and tapering handle. Est. £20 - £30.

98. A good pair or Georgian sugar tongs. London. By CE. Est. £20 - £30.

99. A heavy Adams' style sauce boat on three hoof feet. Birmingham. By BB Ltd. Approx. 209 grams. Est. £60 - £80.

100. A heavy Georgian wine label: "Sherry" decorated with leaves and flowers. Approx. 17 grams. Est. £30 - £50.

101. A square waiter on ball feet with wavy edge. Birmingham. By AC. Approx. 266 grams. Est. £120 - £150.

102. A heavy modern goblet on pedestal base. London. By CS Ltd. Approx. 225 grams. Est. £80 - £100.



103

103. A good quality christening cup, the body decorated with scrolls and flowers with children playing cricket. London. By H&H. Approx. 227 grams. Est. £180 - £220.

104. A cased 1937 Coronation spoon. Sheffield. By TB&S. Approx. 23 grams. Est. £20 - £30.

105. A small Georgian mug with scroll handle. London. By HP. Approx. 189 grams. Est. £70 - £90.

106. A good set of six enamel decorated teaspoons with Coronation decorated bowl. Birmingham. By Elkingtons. Approx. 44 grams. Est. £20 - £30.

107. A group of four pairs of sugar tongs with engraved decoration. Approx. 76 grams. Est. £25 - £30.

108. A group of preserve spoons. Various dates and makers. Approx. 11 grams. Est. £30 - £50.

109. Eight various fiddle pattern teaspoons. Approx. 93 grams. Est. £20 - £30.

110. Six fiddle pattern teaspoons. Various dates and makers. Approx. 110 grams. Est. £30 - £50.

111. A bag containing various teaspoons, tongs, etc. Approx. 110 grams. Est. £30 - £40.



112

112. A good quality ruby glass and silver overlaid decanter and stopper decorated with flowers and leaves. Approx. 24 cms high. Est. £300 - £350.



113

113. A good quality Victorian thistle shaped biscuitière with lift off cover. London. By JG&S. Est. £250 - £300.

114. A silver mounted and cut glass claret jug decorated with flowers. Birmingham 1909. By H&M. Est. £250 - £300.

115. A heavy circular tea tray with beadwork border and scroll decoration. Sheffield. By H&A. Approx. 902 grams. Est. £300 - £350.

116. A set of six OE pattern soup spoons, the bowl with Coronation crest. Sheffield. By NG&Co. Approx. 264 grams. Est. £70 - £80.

117. A good Georgian Christening cup with fluted body and gilt interior on flat base. London. By GK. Approx. 160 grams. Est. £150 - £200.

118. A good quality fiddle and thread fish slice with crested terminal. London 1834. By Mary Chawner. Approx. 193 grams. Est. £180 - £200.

119. A pair of good quality parcel gilt serving spoons attractively decorated to both sides with scroll work. London 1878. By Robert Hutton. Approx. 150 grams. Est. £140 - £160.

120. A Victorian leaf decorated wine label: "Sherry". Birmingham 1865. By TP&Son. Est. £70 - £80.

121. A large half fluted sugar canister with pierced top and scroll decoration. Birmingham. Approx. 216 grams. Approx. 21 cms high. Est. £90 - £100.

122. A good pair of modern cast Queen Anne style candlesticks. London. By RG. Approx. 785 grams. Est. £300 - £350.

123. A set of six fiddle pattern dessert forks. Exeter. By JW&JW. Approx. 240 grams. Est. £60 - £80.

124. A set of six fiddle pattern dessert forks. Exeter. By JW&JW. Approx. 280 grams. Est. £70 - £90.

125. A good set of twelve fiddle pattern table forks with crested terminal. London. By GA. Approx. 915 grams. *Est. £250 - £350.*

126. A set of six Georgian fiddle pattern table forks. London. By IL. Approx. 455 grams. *Est. £140 - £160.*

127. A heavy set of twelve fiddle pattern soup spoons with crested terminals. Approx 880 grams. *Est. £260 - £300.*

128. A good set of twelve Georgian fiddle pattern tablespoons with crested terminals. London. By IL. Approx. 950 grams. *Est. £300 - £350.*



129

129. A good quality wine ewer decorated with drapes and ribbons and gadroon border on pedestal base. London 1897. By Henry Stratford. Approx. 695 grams. *Est. £1300 - £1500.*

130. An unusual vesta case in the form of a padlock with hinged mount and reeded decoration. Birmingham 1880. *Est. £350 - £400.*



131

131. A Victorian silver mounted horn claret jug, the top with hinged mount, scroll thumb piece, and central shield inscribed with the crest of The Duke of Argyll. The lid engraved, "December 1879", and the base engraved: "SLAINTE DHUITSE" (Celtic for "Good Health To You"), and "FROM MONTAGU AND WALTER DOUGLAS CAMPBELL", (Sons of the Duke of Argyll.) London 1877. Approx. 30 cms high. *Est. £1000 - £1500.*

132. A good quality George III stilton scoop with crested terminal. London 1804. By Moses Brent. *Est. £250 - £300.*

133. A stylish Arts & Crafts two handled pedestal bonbon dish. Birmingham 1910. By Evans & Co. Approx. 205 grams. *Est. £80 - £100.*

134. An attractive miniature tea caddy on three feet with swirl decoration. Birmingham 1903. By WD. Approx. 8 cms high. Approx. 93 grams. *Est. £200 - £250.*

135. A large two bottle ink stand, the body heavily decorated with flowers, leaves and a presentation inscription. Approx. 30 cms across. London. By CF. *Est. £500 - £800.*

To follow is a collection of unique silver cutlery being sold on behalf of TUCKERS HALL, one of the oldest buildings in Exeter, built in 1471 which is home to the Incorporation of Weavers, Fullers and Shearmen, an exclusive livery of approximately fifty invited and privileged members who are prominent in business around Exeter and Devon. A vast majority of the collection is crested with the distinctive three Exeter Rougemont Castle towers and crossed armorial.



137-161

- 137.** A heavy set of six Kings pattern dessert forks. London 1842. By SH&DC. Approx. 378 grams. Est. £100 - £150.
- 138.** A set of four Kings pattern dessert forks together with a spoon. London 1903. By RS. Also an odd fork. Approx. 385 grams. Est. £100 - £150.
- 139.** A set of three Kings pattern table spoons. The terminals engraved with the distinctive three Exeter Rougemont Castle towers and crossed swords armorial. London 1898. By CB. Approx. 324 grams. Est. £100 - £150.
- 140.** A heavy set of eight Kings pattern table forks. The terminals engraved with the distinctive three Exeter Rougemont Castle towers and crossed swords armorial. London 1840. By WE. Approx 853 grams. Est. £300 - £350.
- 141.** A heavy set of eight Kings pattern dessert forks. The terminals engraved with the distinctive three Exeter Rougemont Castle towers and crossed swords armorial. London. By DW&JW. Approx. 194 grams. Est. £150 - £200.
- 142.** A heavy set of four Kings pattern dessert forks, numbered to rear. London 1900. Approx 222 grams. Est. £60 - £80.
- 143.** A set of three Exeter Kings pattern dessert forks. By JW&JW. Together with one other. London. Approx. 275 grams. Est. £60 - £80.
- 144.** A heavy set of seven Kings pattern dessert forks. The terminals engraved with the distinctive three Exeter Rougemont Castle towers and crossed swords armorial. London. By GJ&DF. Together with a matching serving spoon. Approx. 596 grams. Est. £180 - £220.
- 145.** A set of three Kings pattern dessert spoons. London 1874. Together with a pair of dessert forks. By MC. Approx. 311 grams. Est. £80 - £100.
- 146.** A heavy set of five Kings pattern table forks. London 1851. By SH&DC. Approx. 520 grams. Est. £150 - £180.
- 147.** A heavy set of six Kings pattern table forks. London 1904. Approx. 609 grams. Est. £180 - £220.
- 148.** A pair of Kings pattern table spoons. London 1845. By EE. Approx. 202 grams. Est. £70 - £80.
- 149.** A set of three Kings pattern serving spoons. The terminals engraved with the distinctive three Exeter Rougemont Castle towers and crossed swords armorial. London 1859. By GA. Approx. 310 grams. Est. £100 - £120.
- 150.** A set of three Kings pattern table forks. The terminals engraved with the distinctive

three Exeter Rougemont Castle towers and crossed swords armorial. London 1850. By HL. Approx. 301 grams. *Est. £80 - £100.*

151. A pair of Kings pattern serving spoons. London 1826. By CE. Approx. 207 grams. *Est. £60 - £80.*

152. A set of six Kings pattern dessert forks. London 1868. By T&S. Approx. 366 grams. *Est. £100 - £150.*

153. A set of eleven Kings pattern coffee spoons. London 1946. By FH. Approx. 228 grams. *Est. £70 - £90.*

154. A heavy set of six Kings pattern tablespoons. London 1851. By SH&DC. Approx. 620 grams. *Est. £200 - £250.*

155. A pair of Kings pattern dessert spoons together with three dessert forks. Various dates and makers. Approx. 324 grams. *Est. £80 - £100.*

156. A good set of twenty-two Kings pattern dessert forks. London 1965. By CB&S. Approx. 1350 grams. *Est. £380 - £420.*

157. A good set of twenty-seven Kings pattern fish knives. Sheffield 1958. By SB&S. Approx. 1836 grams. *Est. £250 - £300.*

158. A set of eighteen good serving spoons with shell back. London. By CS&Co. Approx. 1854 grams. *Est. £500 - £600.*

159. A set of sixteen Kings pattern dessert spoons. The terminals engraved with the distinctive three Exeter Rougemont Castle towers and crossed swords armorial. London 1899. By GJ&DF. Approx. 1107 grams. *Est. £350 - £400.*

160. A set of fifteen Kings pattern table forks. The terminals engraved with the distinctive three Exeter Rougemont Castle towers and crossed swords armorial. London 1889. By CS&Co. Approx. 1407 grams. *Est. £400 - £450.*

161. A set of twelve Kings pattern table forks. The terminals engraved with the distinctive three Exeter Rougemont Castle towers and crossed swords armorial. London 1889. By CS&Co. Approx. 1086 grams. *Est. £300 - £350.*

162. A set of fifteen Kings pattern dessert forks. The terminals engraved with the distinctive three Exeter Rougemont Castle towers and crossed swords armorial. London 1889. By CS&Co. Approx. 930 grams. *Est. £280 - £300.*

163. A heavy set of eighteen Kings pattern table forks. London 1889. By CS&Co. Approx. 1713 grams. *Est. £500 - £600.*

164. A set of five Kings pattern dessert spoons. London 1889. By CS&Co. Approx. 340 grams. *Est. £100 - £150.*

165. A set of five Kings pattern teaspoons and matching tongs. Birmingham. By Elkingtons & Co. Approx. 212 grams. *Est. £60 - £80.*

166. A group of four Kings pattern table knives with stainless steel blades. *Est. £40 - £60.*

167. A pair of Kings pattern table forks together with a pair of Kings pattern dessert forks. London. By CC&Co. Approx. 340 grams. *Est. £100 - £150.*

168. A pair of Kings pattern dessert spoons. London mod. By CC&Co. Approx. 144 grams. *Est. £30 - £50.*

169. A pair of Kings pattern soup spoons. London. By G&Co. Approx. 133 grams. *Est. £30 - £50.*

170. A silver mounted Kings pattern bread knife, butter knife and cake slice. *Est. £40 - £60.*

171. A heavy Kings pattern ladle. London. by GA. *Est. £80 - £100.*

THERE WILL NOW BE A 15 MINUTE BREAK

Jewellery

176. A small diamond three stone ring in 18 carat and platinum. Approx. 1.6 grams. Est. £20 - £30.

177. A small banded agate rectangular brooch in gold frame. Approx. 9 grams. Est. £20 - £30.

178. A long silver and amber necklace with ring clasp. Approx. 39 grams. Est. £30 - £40.

179. A heavy 9 carat locket on fine link chain. Approx. 4.3 grams. Est. £40 - £50.

180. A good quality 18 carat two colour gold bracelet with concealed clasp. Approx. 12.2 grams. Est. £250 - £300.

181. A large oval engraved locket with hinged top. Est. £20 - £30.

182. A large collection of silver and other dress rings. Est. £20 - £30.

183. Two 9 carat gem set rings. Approx. 4.9 grams. Est. £40 - £50.

184. A 9 carat wedding band together with a small diamond single stone ring. Approx. 4.5 grams. Est. £40 - £50.

185. An Antique carved ivory wheat sheaf brooch, etc. Est. £20 - £30.

191. A small collection of enamel and other lockets etc. Est. £20 - £30.

192. A heavy gold turquoise mounted snake ring with entwined body. Est. £50 - £60.

193. A group of various silver and other brooches, lockets etc. Est. £20 - £30.

194. A 9 carat textured link bracelet. Approx. 26 grams. Est. £200 - £250.



195

195. A pair of MOP and enamelled cufflinks. Approx. 7 grams. Est. £40 - £50.

196. A 9 carat circular link necklace with barrel clasp. Approx. 10 grams. Est. £80 - £120.



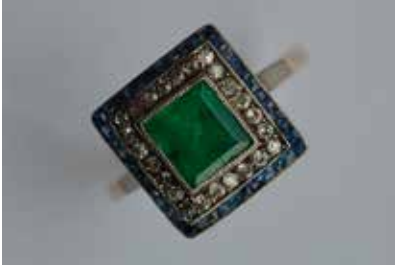
197

197. An attractive Antique oval pearl and rose diamond cluster ring. Est. £180 - £220.



198

198. A good quality silver and citrine graduated necklace with concealed clasp. Est. £350 - £400.



199

199. An attractive Antique emerald cluster ring with diamond surround and sapphire border in two colour gold square setting. Est. £1200 - £1500.

200. A good Antique 15 carat mesh necklace with textured links and hand clasp mounted with a ruby. Approx. 41 grams. Est. £1400 - £1600.

201. A wide three row diamond full eternity ring in white gold band. Est. £400 - £500.

202. A heavy 18 carat two colour gold fine link necklace. Approx. 8.1 grams. Est. £80 - £120.

203. A gold circular target brooch with central pearl and locket back. Approx. 7 grams. Est. £70 - £80.

204. A 9 carat oval moss agate brooch together with two other gold brooches. Est. £40 - £50.

205. A small gold Antique ring together with a cross, earrings, etc. Est. £30 - £50.

206. A heavy Victorian 1887 sovereign mounted as a ring. Approx. 18.6 grams. Est. £300 - £400.

207. A good diamond five stone ring in heavy gold carved setting. Est. £600 - £800.

208. An Essex crystal ring in the form of a bull in carved gold mount with reeded decoration. Est. £800 - £1200.



208

209. A large aquamarine teardrop pendant suspended in claw mount with single diamond on fine link chain. Est. £1200 - £1500.

210. A good ruby and gold diamond boat shaped five stone ring with engraved mount. Est. £500 - £600.



211

211. A natural pearl and diamond circular cluster ring within a platinum mount complete with certificate. Est. £2500 - £3000.

212. A good pair of diamond single stone ear studs in 18 carat white gold setting. Est. £600 - £800.

213. A stylish sapphire and diamond five stone step cut ring in platinum claw mount. Est. £2000 - £2500.

214. A small diamond three stone ring mounted within two colour gold claw setting. Est. £200 - £250.



213

215. A heavy 9 carat single row diamond ring in textured mount. Approx. 4.4 grams. Est. £50 - £80.

216. An unusual modern 9 carat black diamond two row ring. Approx. 3 grams. Est. £40 - £60.

217. A heavy diamond pear shaped cluster ring in gold mount. Approx. 4.4 grams. Est. £50 - £60.

218. A small diamond four row ring of wavy design. Approx. 5 grams. Est. £50 - £80.

219. A heavy 14 carat two colour gold wedding band. Approx. 8.9 grams. Est. £100 - £150.



220

220. A good 18 carat diamond line bracelet with concealed clasp mounted with knife edge spaces. Est. £200 - £250.

221. A good quality Edwardian seed pearl bracelet in concealed clasp and safety chain. Approx. 11 grams. Est. £450 - £550.

222. A stylish Edwardian pearl hinged bracelet with pierced body and engraved decoration. Approx. 11.4 grams. Est. £450 - £500.

223. A stylish French high carat brooch in the form of a lady's head with hinged decoration. Approx. 6.4 grams. Est. £400 - £500.



224

224. LIBERTY style: An attractive topaz and demantoid garnet drop pendant stylishly decorated with leaves and flowers and loop top. Approx. 5.3 grams. Est. £1200 - £1500.

225. An 18 carat ruby flower shaped brooch decorated with leaves. Approx. 9.2 grams. Est. £150 - £200.

226. A 9 carat ruby cocktail ring. Approx. 5.5 grams. Est. £50 - £80.

227. A small 9 carat pearl mounted and blue stone brooch. Approx. 2.9 grams. Est. £25 - £35.

228. A small 9 carat oval cameo ring of a lady's head. Approx. 4 grams. Est. £35 - £45.

229. A stylish 9 carat brooch with pearl mount. Approx. 4.7 grams. Est. £40 - £60.

230. A 9 carat brooch in the form of a flower decorated with large central stone. Approx. 7 grams. Est. £40 - £50.

231. A bundle of 9 carat scrap gold. Approx. 9 grams. Est. £80 - £120.

232. A large oval gold framed cameo of a lady with scroll decoration. *Est. £80 - £120.*

233. A modern silver fancy link necklace together with a bangle and a nurse's watch. Approx. 65 grams. *Est. £20 - £30.*

241. A group of three strings of cultured pearl necklaces. *Est. £20 - £30.*

242. An 18 carat plain wedding band. Approx. 2.7 grams. *Est. £30 - £50.*



243

243. A good quality 18 carat ruby and diamond eight stone boat shaped ring. *Est. £100 - £150.*

244. An attractive opal ruby and diamond Edwardian cluster ring in claw mount. *Est. £100 - £150.*

245. A small diamond and sapphire five stone ring in 18 carat gold mount. Approx. 2.2 grams. *Est. £40 - £50.*

246. An attractive Edwardian ruby and diamond circular cluster ring in 18 carat mount. *Est. £100 - £150.*

247. An 18 carat wedding band. Approx. 1.6 grams. *Est. £25 - £30.*

248. A small 18 carat signet ring. Approx. 3.8 grams. *Est. £60 - £80.*

249. A small 9 carat signet ring with textured border. Approx. 2 grams. *Est. £20 - £30.*

250. A group of three silver mounted and amber pendants. *Est. £20 - £30.*

251. A heavy white gold diamond full eternity ring. Approx. 2.6 grams. *Est. £50 - £60.*

252. A heavy modernistic five row diamond set ring in gold. Approx. 4.5 grams. *Est. £80 - £120.*

253. A small pearl and peridot brooch in 15 carat. Approx. 3.4 grams. *Est. £50 - £80.*



261

261. A graduated string of amber beads with ring clasp. Approx. 23.8 grams. *Est. £200 - £250.*



262

262. An 18 carat two colour gold brooch in the form of a golf club. Approx. 4 grams. *Est. £80 - £120.*

263. Two 9 carat brooches. Approx. 6.5 grams. *Est. £60 - £80.*

264. An oval gilt brooch together with a shield shaped locket etc. Est. £20 - £30.

265. An attractive oval gold locket with engraved decoration and loop top. Approx. 13 grams. Est. £150 - £200.



266

266. A good gold mounted hard stone cameo ring of a gent's head. Approx. 6.5 grams. Est. £60 - £80.

267. A stylish diamond single stone ring in 18 carat two colour gold. Approx. 2.4 grams. Est. £50 - £80.

268. A pair of small gold plated opera glasses with hinged decoration. Est. £20 - £30.



269

269. A stylish two part nurse's buckle decorated with an Oriental scene. Est. £20 - £30.

270. A heavy gold cross with loop top. Approx. 3.6 grams. Est. £40 - £60.



271

271. A good quality emerald and diamond line bracelet mounted in white gold with concealed clasp and locking device. Est. £2000 - £2500.

272. An unusual miniature French gold microscope with rope twist decoration. Approx. 13 grams. Est. £600 - £700.

273. A good sapphire and diamond five stone half hoop ring set in 18 carat carved mount. Approx. 2.6 grams. Est. £200 - £250.

274. A good diamond brooch in the form of a jockey with enamelled decoration and outstretched body. Est. £1500 - £1800.

275. An attractive diamond five stone Antique ring in 18 carat two colour gold. Approx. 2 grams. Est. £200 - £250.

276. A masonic ball with hinged mount and loop top. Approx. 9.6 grams. Est. £100 - £150.

277. A diamond four stone mounted masonic ring with pierced decoration. Approx. 4.6 grams. Est. £45 - £55.

278. A long string of 9 carat circular link chain. Approx. 34.2 grams. Est. £300 - £350.

279. A small diamond five stone 18 carat half hoop ring. Approx. 2.4 grams. Est. £40 - £50.

280. A heavy 22 carat gold wedding band of plain design. Approx. 7 grams. Est. £150 - £200.



281

281. An attractive diamond circular daisy head cluster ring with pierced mount in two colour gold. Est. £700 - £800.

282. A small circular sapphire and diamond cluster ring in 18 carat claw mount. Est. £400 - £600.

283. A pair of good Antique green stone earrings with loop tops and foil back. Est. £400 - £500.

284. A large sapphire and diamond crescent brooch in claw mount with gold pin. Est. £1000 - £1500.

285. A good large diamond single stone mounted as a pendant in claw mount with loop top. Approx. 1.75 carats, on fine link chain. Est. £2000 - £2500.

286. A heavy plain 22 carat wedding band. Approx. 9 grams. Est. £170 - £190.

287. A heavy plain 22 carat wedding band. Approx. 5.3 grams. Est. £100 - £150.

288. A large heavy plain 18 carat wedding band. Approx. 9.6 grams. Est. £170 - £190.

289. An attractive pearl and ruby cluster ring with diamond chips. Approx. 3.1 grams. Est. £50 - £60.

290. A heavy large Antique gold brooch mounted with central cabachon ruby. Approx. 19.5 grams. Est. £150 - £200.



291

291. A large emerald and diamond square eternity ring, the surround mounted with two rows of brilliant cut diamonds in heavy 18 carat mount. Approx. 6.8 grams. Est. £1200 - £1500.

292. A good quality 18 carat baguette cut half eternity ring. Approx. 5 grams. Est. £450 - £550.

293. A good pair of Georgian paste drop earrings set in silver. Est. £600 - £700.

294. A small 18 carat single stone ring in claw mount. Approx. 0.70 carats. Est. £400 - £500.

295. A 9 carat hinged bangle with concealed clasp. Approx. 9.7 grams. Est. £80 - £120.

296. A small pair of garnet and pearl drop earrings with loop top. Est. £30 - £40.

297. An Antique carved brooch decorated with leaves and flowers. Est. £40 - £50.

298. A heavy gold box link guard chain together with a heart shaped locket inset with diamond. Approx. 26 grams. Est. £220 - £250.



299

299. A heavy 9 carat double watch Albert together with spinning fob. Approx. 51.8 grams. *Est. £450 - £550.*

300. A heavy circular diamond and sapphire cluster ring in gold mount. Approx. 4.7 grams. *Est. £50 - £80.*



301

301. A good platinum mounted emerald and diamond cluster ring. *Est. £800 - £900.*

302. A Georgian Antique rose cut diamond single stone ring with enamelled border and reeded sides. *Est. £800 - £1200.*

303. A good quality Antique Georgian flat cut two strand necklace with concealed clasp. *Est. £800 - £1200.*

304. A small oval boat shaped brooch decorated with gold inlay. *Est. £50 - £80.*

305. A small gold and amethyst brooch together with a gold locket and stick pin. *Est. £20 - £30.*

306. A heavy silver curb link watch chain together with a T-bar. Approx. 54 grams. *Est. £20 - £30.*

307. A silver curb link watch chain together with two others. Approx. 107 grams. *Est. £40 - £60.*

308. A silver curb link watch Albert together with a vesta case. Birmingham. By MC. Approx. 69 grams. *Est. £40 - £60.*

309. A stylish silver torque bangle with ball decoration. Approx. 107 grams. *Est. £100 - £150.*

310. A diamond and demantoid garnet pin in the form of a sword mounted in gold. Approx. 5.5 grams. *Est. £500 - £600.*

311. A good French cushion shaped sapphire and diamond cluster ring in platinum setting. *Est. £1000 - £1500.*

312. A small diamond single stone twist ring in claw mount and 18 carat gold. *Est. £250 - £300.*

313. A pair of stylish baguette cut diamond drop earrings, the drops mounted with brilliant cut stones in collet mount and suspension body. *Est. £2500 - £3000.*

314. A small modern sapphire and diamond cluster ring in 9 carat mount. Approx. 2.5 grams. *Est. £25 - £35.*

315. A 9 carat amethyst three stone ring in carved mount. Approx. 3.7 grams. *Est. £40 - £50.*

316. A pair of silver circular target earrings with ball decoration. Approx. 5 grams. *Est. £25 - £35.*

317. A long silver chain link collar. Approx. 53 grams. Est. £30 - £50.

318. A stylish rectangular enamel brooch with ball decoration signed BAWE Norway. Est. £50 - £80.



319

319. A heavy 18 carat gold brooch in the form of a bulldog with diamond eyes and diamond collar. Approx. 15.7 grams. Est. £700 - £800.

320. A good quality sapphire and diamond cluster ring in white gold mount. Approx. 4.5 grams. Est. £500 - £600.

321. A pair of good quality circular sapphire and diamond ear pendants mounted in platinum with large central stone. Est. £1000 - £1500.

322. A good diamond and sapphire seven stone ring in 18 carat claw mount. Approx. 2.5 grams. Est. £200 - £250.



323

323. CARLO GIULIANO: A good pair of gold cufflinks, the chains hallmarked to either side. Approx. 9 grams. Est. £1000 - £1500.

324. A good gold and crystal oval pendant with blue enamelled back depicting children playing. Est. £800 - £1200.

325. An Antique garnet cluster ring in gold. Approx. 3.6 grams. Est. £35 - £45.

326. A heavy 22 carat gold and platinum wedding band. Approx. 9.7 grams. Est. £250 - £300.

327. A good circular diamond cluster ring in gold claw mount. Approx. 3.3 grams. Est. £40 - £50.

328. An 18 carat opal and diamond half hoop ring set in gold. Approx. 1.8 grams. Est. £50 - £60.

329. A small 9 carat garnet cluster ring. Approx. 2 grams. Est. £25 - £35.

330. A pair of attractive Antique topaz earrings with gold filigree decoration. Est. £300 - £350.

331. An attractive diamond fringe necklace in 18 carat and platinum with ring clasp. Est. £1200 - £1500.

332. A small silver and blue stone pendant on fine link chain. Est. £60 - £80.



333

333. A diamond bracelet in a graduated circular collet setting with concealed clasp.. Approx.18 cms long. Approx. 6 carats of diamonds. Est. £5000 - £6000.



334

334. KERN: A large heavy amethyst brooch in the form of a butterfly with outstretched wings and diamond tail numbered 15439 in 18 carat gold. Approx. 4.5 cms across. Est. £1500 - £2000.

335. A Georgian Antique garnet and diamond ring in rubover mount. Est. £600 - £700.



336

336. A small diamond single stone ring in white gold mount. Approx.1 carat. Est. £1000 - £1500.

337. A good pair of diamond hoop earrings set in gold. Approx. 5.5 grams. Est. £150 - £200.

338. An attractive Edwardian pendant decorated with bows and swags and

green enamel decoration, supporting pearl base contained within a fitted box. Est. £3500 - £4000.

339. A good diamond single stone ring in white gold. Approx. 0.75 carats. Est. £1000 - £1200.



340

340. A diamond single stone ring, the brilliant cut stone weighing approx. 2.50 carats to a tapered baguette cut diamond shoulder in platinum claw mount. Est. £10,000 - £12,000.

346. A small 9 carat curb link bracelet. Approx. 9 grams. Est. £60 - £80.

Watches

350. TISSOT: A gent's stainless steel PCR100 chronograph wristwatch with box and papers. *Est. £250 - £300.*

351. A 9 carat lady's wristwatch on mesh strap. Approx. 21 grams. *Est. £100 - £150.*

352. A plated pocket watch together with one other and a compass. *Est. £20 - £30.*

353. A silver open faced pocket watch together with a fob watch. *Est. £30 - £40.*

354. WALTHAM: A 9 carat wristwatch. *Est. £20 - £30.*

355. A box containing wrist and pocket watches. *Est. £20 - £30.*

356. Two ladies' gold wristwatches. *Est. £30 - £40.*

357. MOVADO: A stainless steel wristwatch on leather strap. *Est. £120 - £150.*

358. OMEGA: A lady's 9 carat wristwatch with silver dial. *Est. £40 - £60.*

359. An attractive French diamond mounted cocktail watch with silver dial. *Est. £80 - £120.*

360. An attractive French cocktail watch decorated with sapphires and diamonds. *Est. £80 - £120.*

361. A modern gold plated full hunter pocket watch. *Est. £15 - £20.*

362. A large gent's silver lever pocket watch with gilt dial. *Est. £60 - £80.*

363. A slim silver pocket watch with silver dial and engraved decoration. *Est. £50 - £80.*

364. A bag containing numerous watch keys. *Est. £20 - £30.*

365. ROLEX: A gent's Military pocket watch with black dial, numbered 1459. *Est. £200 - £250.*



366

366. OMEGA: A good gent's steel and gold Speedmaster Automatic with date aperture and gold mounted thumb piece. *Est. £1200 - £1500.*

367. A gent's silver open faced pocket watch with white enamelled dial. *Est. £50 - £80.*

368. LONGINES: A gent's stainless steel automatic chronograph wristwatch on leather strap with date aperture. *Est. £1000 - £1500.*

369. INGERSOLL: A gent's diamond encrusted wristwatch on gold plated and stainless steel strap with blue dial. *Est. £80 - £120.*

370. INGERSOLL: A gent's wristwatch, the bezel mounted with numerous stones, MOP dial and date aperture. *Est. £80 - £120.*

371. A gent's gold plated wristwatch mounted with small gold ingot. *Est. £50 - £80.*

372. LONGINES: A gent's stainless steel wristwatch on expanding strap. *Est. £60 - £80.*

373. A lady's 18 carat square faced wristwatch on 9 carat strap. Approx. 20 grams. *Est. £120 - £150.*

374. ZENITH: A lady's small wristwatch on leather strap. *Est. £20 - £30.*



375

375. BVLGARI: A heavy gent's 18 carat gold chronograph with date aperture on mesh gold concealed clasp, numbered L5867 contained within a fitted box. Approx. 171.5 grams. *Est. £5000 - £6000.*



376

376. TUDOR: A gent's stainless steel oyster thin wristwatch on matching strap. *Est. £350 - £400.*



377

377. CARTIER: A large gent's Roadster Automatic wristwatch with date aperture on stainless steel strap, numbered to rear. *Est. £1500 - £2000.*

378. ROLEX: A gent's gold and stainless steel Oyster Perpetual with date aperture, gold bezel and winder on matching strap. *Est. £2000 - £2500.*

379. A slim 18 carat French fob watch with engraved engine turned decoration. *Est. £150 - £200.*

380. An 18 carat Swiss pocket watch attractively decorated with flowers and leaves. *Est. £150 - £200.*

381. A small plated railway watch with white enamelled dial. *Est. £20 - £30.*

382. A gent's stainless steel mounted wristwatch with date aperture and spare link in fitted box. *Est. £60 - £80.*

383. A gent's diamond mounted wristwatch inset with gold ingot together with an Accurist watch. *Est. £40 - £60.*

384. INGERSOLL: A large gent's diamond mounted chronograph wristwatch with MOP dial and fitted box. *Est. £50 - £80.*

385. AQUASWISS: A large gent's wristwatch with black dial and subsidiary second's dial in fitted box. *Est. £30 - £50.*

386. TUDOR: A gent's stainless steel wristwatch on leather strap with silvered dial. *Est. £40 - £60.*

387. BENSON: A gent's silver open faced pocket watch with white enamelled dial. *Est. £40 - £60.*

388. ROLEX: A lady's stainless steel and gold Oyster Perpetual Datejust with diamond bezel, blue MOP dial and date aperture. Est. £2500 - £3000.

389. CARTIER: A gent's 18 carat wristwatch mounted on a leather strap with date aperture. Est. £1800 - £2000.

390. REGIS: A gent's pink gold wristwatch with gilt dial on expanding strap. Est. £250 - £300.

391. A box containing costume jewellery. Est. £40 - £60.

392. WALTHAM: A gent's 21 jewel wristwatch with gilt dial in 14 carat gold on leather strap. Est. £120 - £150.

393. A good gold and diamond cluster ring together with a pair of gold bracelets. Est. £40 - £60.

GOLD COINS BEING SOLD ON BEHALF OF HOSPISCARE WITHOUT RESERVE:

394. A 2011 UK Mary Rose £2 gold proof coin. Est. £400 - £500.

395. A London Underground 2013 UK £2 gold proof two coin set. Est. £800 - £1200.

396. Queen Victoria Bullion sovereigns three coin portrait set. Est. £650 - £700.

397. The Queen's Diamond Jubilee UK gold proof coin. Est. £1000 - £1500.

398. A 2010 UK Restoration of the Monarchy £5 gold proof coin. Est. £1000 - £1500.

399. A 2011 gold proof sovereign five coin collection. Est. £1500 - £2000.

400. A silver 2013 £20 coin. Est. £20 - £30.

401. A Henry VII proof £5 coin together with a Christmas sixpence. Est. £15 - £20.

THERE WILL NOW BE A 15 MINUTE BREAK



399

Pictures

402. A Venetian canal scene with gondolas. Approx. 52 cms x 36 cms. Unsigned. Est. £40 - £60.

403. A nineteenth century English school portrait of four children playing in gilt frame. Approx. 70 cms x 50 cms. Est. £150 - £200.



404

404. ALICE MACALLAN SWAN: Still life entitled "Harmony in Yellow and Gold". Framed. Approx. 54 cms x 75 cms. Verso: inscribed "Purchased by Miss Swan's Nephew Robert Wemyss Symonds in March 1939" to top right and central inscription with title and artists name, and "78 Milson Road, Kensington, W 14". Est. £200 - £300.

405. WALE OLAJIDE: "The Fraternal Twins", signed. Approx. 31 cms x 56 cms. Est. £100 - £150.

406. L BUNELLSMITH: A river landscape with castle, signed and dated. Approx. 47 cms x 39 cms. Est. £40 - £60.

407. JOHN CHRISTIAN: A woodland scene at Hembury Fort, Devon. Approx. 34 cms x 50 cms. Est. £20 - £30.

407A. W. P. CARTWRIGHT (1855 - 1915) 'A Merry Journey Home',: Framed oil on canvas. Signed to bottom left. Inscribed verso with title and dated 1888. Approx. 52 cms x 35 cms. Est. £80 - £100.

408. After David Teniers. "The Village Scene", unsigned, oil on board. Approx. 21 cms x 28 cms. Est. £300 - £350.

409. BORNE: "A Continental Street Scene", oil on canvas, signed Borne. Approx. 50 cms x 61 cms. Est. £40 - £60.

410. D LONG: A Continental seascape with figures. Approx. 61 cms x 51 cms. Est. £40 - £60.

411. An attractive oval painting of a lady wearing a red hat in gilt frame with bow top. Est. £100 - £150.

Collectables

- 412.** A good EPNS kettle on stand of fluted design. *Est. £20 - £30.*
- 413.** A large plated Corinthian column lamp. *Est. £40 - £60.*
- 414.** A good leather travelling suitcase with brass handles. *Est. £30 - £50.*
- 415.** An Edison standard phonograph with horn and rolls. *Est. £60 - £80.*
- 416.** A good brass watering can. *Est. £20 - £30.*
- 417.** A Charrington Crown Bitter wall clock. *Est. £30 - £50.*
- 418.** A Schooner bar pub fitting. *Est. £20 - £30.*
- 419.** A collection of good Victorian and later lace ware. *Est. £50 - £80.*
- 420.** An attractive MOP lace decorated fan. *Est. £30 - £40.*
- 421.** Three old fans. *Est. £20 - £30.*
- 422.** BIRO: A silver mounted engine turned fountain pen. *Est. £20 - £30.*
- 423.** A pair of Bakelite spectacles. *Est. £30 - £40.*
- 424.** A group of three MOP card cases. *Est. £30 - £40.*
- 425.** A small collection of doll's house glassware. *Est. £20 - £30.*
- 426.** A collection of old Military maps. *Est. £20 - £30.*
- 427.** A collection of unusual WWI and WW2 postcards. *Est. £20 - £30.*
- 428.** Old Military and other badges. *Est. £30 - £40.*
- 429.** A good four drawer brass telescope. *Est. £20 - £30.*
- 430.** A collection of Masonic regalia. *Est. £30 - £40.*
- 431.** A collection of silver and other Masonic medals. *Est. £40 - £60.*
- 432.** A collection of Masonic and other outfits. *Est. £50 - £60.*
- 433.** A good Canon automatic cased camera together with lenses in fitted box. *Est. £60 - £80.*
- 434.** J SWIFT & SON: A large microscope contained within a fitted box. *Est. £50 - £80.*
- 435.** EMILE BAYARD: A pair of framed and glazed pictures of fighting ladies. *Est. £60 - £80.*



436

436. MEDICAL INTEREST: A good Antique medical trepanning set, the complete set contained within a fitted velvet and shagreen box with brass hinges. *Est. £500 - £700.*

437. A Bank of England old £5 note, serial number Z66016300. *Est. £30 - £50.*

437A. An Apothecary's pill maker. *Est. £50 - £80.*



437A

438. A good leather bound book entitled “Illuminating” with silk panels. *Est. £50 - £80.*

439. An Antique good carved ivory chess set with reeded decoration. *Est. £200 - £250.*

440. An Antique Oriental chess set, the pieces decorated as carved figures. *Est. £200 - £250.*

441. A good carved ivory Antique fitted nécessaire. *Est. £100 - £150.*

442. An Oriental brass vase, the body decorated with leaves and flowers. *Est. £30 - £50.*

443. An Oriental silver gilt and brass enamelled centrepiece with wire work decoration. *Est. £80 - £100.*

444. Two good floral decorated scent bottles with lift off tops. *Est. £30 - £50.*

445. An Antique silver gilt and banded agate scent bottle, the body decorated with flowers and leaves. Approx. 9 cms high. *Est. £120 - £150.*

446. Three decorative glass interior painted scent bottles with lift off covers on pedestal bases. *Est. £100 - £150.*

447. Two enamel decorated scent bottles brightly decorated with birds together with a tortoise scent bottle. *Est. £70 - £90.*

448. A good group of six decorative carved scent bottles with lift off covers. *Est. £70 - £90.*

449. An Aulos bass recorder, the mouthpiece has been overlaid with padding and string. *Est. £10 - £20.*

450. A two colour wooden oud in fitted travelling case, ornately carved sound hole. Only 13 out of 19 strings present. *Est. £50 - £80.*

451. A two colour wooden oud in fitted travelling case, with ornately carved sound hole. Full 13 strings present. *Est. £50 - £80.*

452. Full sized guitar by José Ramirez of Madrid in travelling sleeve. *Est. £30 - £50.*

453. A customised briefcase containing four varying sized recorders comprising an Aulos soprano in material sleeve, a wooden descant Dolmetsch recorder, a wooden alto Dolmetsch recorder and a wooden Dolmetsch tenor recorder together with cleaning sticks. *Est. £30 - £50.*

455. A good set of four etched glasses. *Est. £20 - £30.*

China

456. A decorative Continental dessert service attractively painted with flowers. Est. £20 - £30.

457. An attractive etched glass set decorated with scrolls on flat base. Approx. 70 pieces. Est. £100 - £150.

458. A good pair of Continental figures on pedestal bases. Est. £30 - £50.

459. An attractive Royal Crown Derby tea service with gilded decoration. Est. £60 - £80.

460. A good pair of pink lustre glass vases decorated with leaves. Approx. 20 cms high. Est. £60 - £80.

460A. CLARICE CLIFF: "Bizarre". A tapered crocus pattern castor. Est. £40 - £60.

460B. CLARICE CLIFF: "Fantasque". A small crocus pattern cream jug together with a pair of bowls. (Slight damage). Est. £30 - £40.

460C. CLARICE CLIFF: "Bizarre". A round dinner plate together with a Royal Staffordshire preserve jar and a smaller plate. Est. £20 - £30.

460D. CLARICE CLIFF: "Bizarre". A stylish teapot with floral decoration. Est. £20 - £30.



460

460E. CLARICE CLIFF: "Bizarre". A stylish plate together with matching cream jug and sugar basin. Est. £30 - £50.

460F. CLARICE CLIFF: "Bizarre". A floral decorated bowl together with a jug and side plate. Est. £20 - £30.

460G. CLARICE CLIFF: "Fantasque". A small painted preserve pot decorated with flowers. Est. £15 - £20.

460H. CLARICE CLIFF: "Bizarre". A stylish conical shaped castor. Est. £40 - £60.

460J. CLARICE CLIFF: "Bizarre". An acorn pattern cylindrical preserve jar on stepped base. Est. £30 - £40.

460K. Hand painted stylish salt and peppers in "Bizarre" pattern. Approx. 4 cms high. Est. £30 - £50.

460L. CLARICE CLIFF: "Fantasque". A large fruit bowl decorated with flowers. Signed to base. (Significant damage). Est. £20 - £30.



460M, N, P, Q & R

460M. TROIKA: A matched pair of vases. Signed to base. Approx. 15 cms high. Est. £50 - £80.

460N. TROIKA: A moon shaped vase on flat base. Signed to base. Approx. 11.5 cms. Est. £30 - £50.

460P. TROIKA: A circular vase on pedestal base. Signed to base. Approx. 12 cms high. Est. £30 - £50.

460Q. TROIKA; A large vase with textured body. Signed to base. Approx. 18 cms high. Est. £30 - £50.

460R. TROIKA: A large vase of square form. Signed to base. Approx. 20 cms. Est. £30 - £50.

460S. CLARICE CLIFF: An unusual crocus pattern planter in the form of a clog. Est. £100 - £150.



460T

460T. CLARICE CLIFF: A large crocus pattern jardiniere on pedestal base. Est. £100 - £150.

461. A Continental six piece porcelain monkey band decorated with bright colours. Est. £60 - £80.

462. A tall Staffordshire figure of a lady together with a pair of small Staffordshire dogs. Est. £20 - £30.

463. An early Crown Derby bowl together with a small cup and saucer. Est. £30 - £50.

464. A tall pair of Royal Doulton baluster shaped vases. Approx. 25 cms high. Est. £60 - £80.

465. An attractive Oriental plated decorated with flowers and leaves. Est. £25 - £35.

465A. Wedgwood Colombia pattern: A large decorative part tea service. Est. £40 - £60.

466. Two Antique blue and white bowls decorated with dragons. Est. £30 - £50.



467

467. QIANLONG: An Antique decorated mug, the body impressed with flowers. No damage or repairs. Approx. 13 cms high. Est. £100 - £150.

468. A pair of Antique Chinese saucers mounted with figures. Est. £30 - £50.

469. A pair of decorative Chinese crackle ware vases heavily designed with a fighting scene. Approx. 24 cms high. Slight damage. Est. £80 - £120.

470. An Oriental figure of a china man on pedestal base, stamped to interior. Approx. 15 cms high. Est. £80 - £120.

471. MEISSEN: A large figure of a white horse together with a lady wearing a large gown on leaf decorated base. Approx. 24 cms high. Est. £400 - £600.

472. DOCCIA: A large porcelain figure of a ram mounted with a figure of Royalty. Approx. 20 cms high. Est. £100 - £150.



473

473. A large impressive Staffordshire figure of a gent decorated with flowers and leaves on square pedestal base. Approx. 55 cms high. Slight damage. *Est. £200 - £300.*

474. An Antique decorative Derby bowl gilded with flowers and leaves. Approx. 24 cms across. *Est. £60 - £80.*

475. Two Antique blue and white baby feeders decorated with flowers and leaves. *Est. £50 - £80.*

476. An 18th Century pearl ware coffee can decorated with trees. Approx. 7 cms high. *Est. £100 - £150.*

477. A good Antique 18th Century bowl decorated with Oriental figures and trees on pedestal base. Approx. 18 cms in diameter. In perfect condition. *Est. £150 - £200.*



478

478. A good pair of Antique blue and white sauce boats decorated with Oriental figures with leaves and flowers. Slight damage. *Est. £300 - £400.*



479

479. An 18th Century coffee pot, the baluster shaped body decorated with an Oriental scene with blue and white border on pedestal base. *Est. £300 - £400.*



480

480. FLIGHT & BARR: A good large mug with oval panel of mother feeding children, inscribed to base "Breakfast" with gilt decoration. Approx. 13.5 cms high. *Est. £300 - £500.*



481

481. An early 19th Century stoneware spirit cask in the form of a bust of a gentleman smiling. No cork. Approx. 26 cms high. Est. £150 - £200.



482

482. An attractive brass mounted casket, the porcelain panels decorated with flowers and leaves, the brass mounts with cherubs and scrolls and fitted interior. Approx. 24 cms x 18 cms. Est. £700 - £800.



483

483. An unusual French Antique picture/clock of "Village Scene", the interior mounted with verge watch movement in gilt frame. Approx. 72 cms x 59 cms. Est. £600 - £800.

484. A Royal Doulton figure "Gathering Fruits", impressed to base 302. Approx. 19 cms high. Est. £100 - £150.

485. A box containing Antique lace. Est. £30 - £50.

486. A German porcelain headed doll together with a miniature doll. Est. £40 - £60.

487. A large stylish brass and copper tray. Est. £20 - £30.

488. A good rosewood and MOP tea caddy. Est. £30 - £50.

489. A good quality Eastern inlaid and carved caddy on ball feet and velvet interior. Est. £120 - £150.

490. A heavy brass repeating carriage clock with white enamelled dial on bracket feet. Approx. 14 cms high. Est. £250 - £300.

490A. An old skeleton clock complete with pendulum and key. Est. £60 - £80.

491. A Plessey LT150 Mk 12 Jet Engine Starter: A starter engine for starting jet engines on either Lighting or Hunter Military Aircraft such as the Rolls Royce, Avon 201 engine. In original box. No warranty. Being sold on behalf of Southwest Airfields Heritage Trust. Est. £100 - £150.

492. A large mahogany framed wall clock with enamelled dial. Est. £80 - £120.

493. A dome top clock together with a mantle clock, etc. Est. £20 - £30.

494. A large staddle stone. Est. £150 - £200.

495. A large staddle stone. Est. £150 - £200.

496. A large staddle stone. Est. £150 - £200.

497. A large staddle stone. Est. £150 - £200.

498. A large staddle stone. Est. £150 - £200.

499. A large staddle stone. Est. £150 - £200.

Railwayana & Toys

ALL TO BE SOLD WITHOUT RESERVE:

500. ARCAM: A good collection of boxed musical stack system and speakers. *Est. £100 - £150.*

501. Two Aveling and Porter cast brass steam roller stock head emblems, together with a "Strong Holdfast Safe" cast brass banner motto. *Est. £30 - £40.*

502. A Foden chromed radiator emblem. *Est. £20 - £30.*

503. Two Albion commercial motor vehicle badges. *Est. £20 - £30.*

504. Two traction engine rally cast brass attendance plaques; a cast brass pressure plate and two other items. *Est. £20 - £30.*

505. A cast brass signal lever plaque and three similar cast metal number plaques. *Est. £30 - £40.*

506. Three enamel arm band badges comprising one London and North Western Railway Lookout and two Great Western Railway Lookouts. *Est. £20 - £30.*

507. Seven assorted brass pay cheques including one London and North Western, two North Eastern and two Great Western Railway examples. *Est. £40 - £60.*

508. Assorted railwayana including a signal block instrument, cast brass indicator ring, enamel number plaques and unused transfers. *Est. £30 - £40.*

509. A Morris motor car chrome and enamel radiator badge. *Est. £15 - £20.*

510. A British Railways three aspect hand lamp together with a British Railways (Western Region) tail lamp. *Est. £20 - £30.*

511. A large cast iron key. Approx. 22.5 cms long. *Est. £15 - £20.*

512. A painted wood distant signal arm. Approx. 130 cms long. *Est. £20 - £30.*

513. A London Midland and Scottish Railway enamel "Trespass" sign. Approx. 55.5 cms wide. *Est. £25 - £35.*



514

514. A cast metal number plate, (OP22). Approx. 58 cms wide. *Est. £20 - £30.*

515. A cast metal number plate, (OPI4). Approx. 51 cms wide. *Est. £20 - £30.*

516. A cast metal number plate, (OP31). Approx. 45.5 cms wide. *Est. £20 - £30.*



517

517. A National Railways of Zimbabwe cast metal cab side number plate, (1215). Approx. 47 cms wide. Est. £60 - £80.

518. Three garden railway wooden drivers' seats, the largest approx 75 cms long. Est. £30 - £40.

519. A Lancashire and Yorkshire Railway copper signal lamp. Approx. 48 cms high. Est. £40 - £60.

520. A cast iron door sign, "Private". Approx. 29.5 cms long. Est. £25 - £35.

521. A cast iron number plate, "3/4". Approx. 29 cms wide. Est. £25 - £35.

522. A cast iron number plate, "1/2". Approx. 29 cms wide. Est. £25 - £35.

523. A cast iron "Shut and Fasten Gate" sign. Approx. 84.5 cms long. Est. £30 - £40.

524. A cast iron "Shut and Fasten Gate" sign. Approx. 84.5 cms long. Est. £30 - £40.

525. A cast iron "Penalty For Not Shutting Gate" sign. Approx. 77 cms long. Est. £40 - £50.

526. A reproduction cast metal locomotive name plate, "Flying Scotsman" and five other assorted cast metal and enamel signs. Est. £30 - £40.

527. A Southern Railway printed "Trespass" sign with a painted wooden frame. The reverse with Southern Railway label hand written "S M Amesbury". Est. £40 - £50.

528. A printed formica British Railways System Map. Approx. 59.5 cms x 42 cms, together with a printed plastic number sign, "15". Est. £20 - £30.

529. Two British Railways carriage lavatory mirrors, each approx. 40.5 cms wide. Est. £25 - £35.

530. Three plate layers' tools including two large bars. Est. £20 - £30.

531. A Railway line speed limit sign, "20". Approx. 72 cms high. Est. £40 - £60.



532

532. A British Railways (Western Region) signal arm spectacle frame. Approx. 51.5 cms wide. Est. £30 - £40.

533. A London and South Western Railway signal arm spectacle frame. Approx. 55 cms wide. Both lenses are broken. Est. £30 - £40.

534. A cast iron bridge plate. Approx. 23.5 cms wide. Est. £30 - £40.

535. A London Midland and Scottish Railway carriage door foot plate. Approx. 46 cms long. Est. £20 - £30.

536. A cast iron dimension plate. Approx. 23 cms wide. Together with three other dimension plates, a wagon plate, and two broken part signs. Est. £25 - £35.

537. Two signal box frame levers. Each approx. 126 cms long. Est. £40 - £60.

538. A small cast metal signal arm spectacle frame dated 1955. Approx. 18.5 cms long. Together with a small home signal arm. Approx. 31.5 cms long. (Lacking lenses). Est. £20 - £30.

- 539.** A Great Western Railway cast iron passenger's "Must Not Cross the Line" warning sign. Approx. 62.cms wide. (Broken in two). *Est. £20 - £30.*
- 540.** A Southern Railway brass signal box regulator and two British Railways cast aluminium carriage ashtrays. *Est. £20 - £30.*
- 541.** A Great Western Railway cast iron double ended locomotive spanner. Approx. 86.5 cms long. *Est. £15 - £20.*
- 542.** Two British Railways brass pressure gauges, the largest calibrated to 120 lbs per square inch and with a flanged back plate. Approx. 15.5 cms diameter. *Est. £40 - £50.*
- 543.** A small pressure gauge by The Marsh Corporation of Chicago. Approx. 5.5 cms diameter. Together with assorted other metalware and gauges. *Est. £25 - £35.*
- 544.** A "Foden" chrome metal radiator emblem. *Est. £20 - £30.*
- 545.** A cast iron number plate, "2806". Approx. 15 cms wide. (Broken across one fixing point). Set to a wooden board with typed paper label, "Plant Number From Forge of Ipswich Old Loco Shed". *Est. £20 - £30.*
- 546.** A London and South Western Railway cast metal plaque. Approx. 21 cms x 17 cms. *Est. £20 - £25.*
- 547.** Assorted signal lever plaques, some sign written. (10). *Est. £60 - £80.*
- 548.** A British Railways cast brass carriage door foot plate. Approx. 92 cms long. *Est. £20 - £30.*
- 549.** A British Railway three aspect hand lamp by Polkey of Birmingham with a Southern Railway burner and applied "SR" plaque to the body. Approx. 31.5 cms high. *Est. £20 - £30.*
- 550.** A cast brass porthole window, approx. 51 cms wide, inclusive of mounting brackets, together with a similar oval window, the brass frame stamped, "LMSL88". Approx 61 cms wide. *Est. £30 - £40.*
- 551.** Assorted railwayana including signal arm spectacle lenses, ceramic insulators, a brass ventilator panel and a Great Western Railway brass coat hook. *Est. £30 - £40.*
- 552.** A London Midland and Scottish Railway hand lamp together with four other assorted lamps, (all as found). *Est. £25 - £30.*
- 553.** A British Railways bulls-eye lamp. Approx. 28.5 cms high. Together with three other lamps, (one as found). *Est. £40 - £50.*
- 554.** A British Railways (Midland Region) painted metal First Aid tin. Approx. 47 cms wide. *Est. £30 - £40.*
- 555.** A Southern Railway Welch's patent two aspect hand lamp. Approx. 20 cms high. *Est. £25 - £30.*
- 556.** A British Railways Bardic hand lamp, together with four other assorted lamps and two lamp parts. *Est. £35 - £45.*
- 557.** A British Railways (Midland Region) acetylene / paraffin hand lamp by The Premier Lamp Engineering Co. of Leeds. Approx. 26 cms high. *Est. £25 - £35.*
- 558.** A British Railways (Southern Region) hand lamp together with four other assorted lamps, (one as found). *Est. £30 - £40.*
- 559.** A large Welch's patent cast iron lamp, approx. 35 cms high, together with three other assorted lamps and two lamp crowns (all as found). *Est. £30 - £40.*

560. Assorted railwayana including bulls-eye lamp lenses, oil cans, a British Railways folder, a cast iron pulley wheel and a British Railways kettle, (lacking lid), together with a Mamod stationery steam engine, cigarette cards and other items. *Est. £30 - £40.*



560A

560A. Three old railway lamps. *Est. £60 - £80.*

561. A British Railways galvanised metal bucket. *Est. £15 - £20.*



562

562. A cast iron “Stop, Look and Listen” warning sign. Approx. 81.5 cms wide (broken in two and screwed together). *Est. £20 - £30.*

563. A brass locomotive whistle. Approx. 49 cms high. *Est. £60 - £80.*

564. Eight brass signal lever handles. *Est. £20 - £30.*

565. A modern era reflective “Stop, Look Listen” warning sign. Approx. 110 cms x 70 cms. *Est. £20 - £30.*

566. A modern era reflective “Stop, Look Listen” warning sign. Approx. 110 cms x 70 cms. *Est. £20 - £30.*

567. A modern era reflective “Stop, Look Listen” warning sign. Approx. 110 cms x 70 cms. *Est. £20 - £30.*

568. A printed aluminium commercial vehicle hazardous warning sign. Approx. 69.5 cms x 40 cms. *Est. £15 - £20.*

569. A South Western Electricity board enamel “Danger” sign. Approx 30 cms x 60 cms. *Est. £20 - £30.*

570. A wooden pond yacht with varnished deck and keel, complete with mast and sails. Approx. 91 cms long. *Est. £30 - £40.*

571. A late 19th or early 20th Century model sailing ship with a plank effect deck and a painted hull with weighted keel, complete with mast and sails, (as found). Approx. 94 cms long. *Est. £80 - £100.*

572. Two Lledo Vanguards diecast model cars, comprising an Austin A35 and a Mini Cooper, each boxed. *Est. £10 - £15.*

573. Three cast metal letters, “G”, “A” and “S”. Each approx. 26 cms high. *Est. £15 - £20.*

574. Two Great Western Railway retaining batons, each with carrying handle, and each approx. 95.5 cms long. *Est. £20 - £30.*

575. A Britain’s lead State coach and team of eight horses, together with attendant figures, unboxed. *Est. £30 - £40.*

576. Assorted Britain's and other lead mounted bandmen together with similar figures. (26). *Est. £30 - £40.*

577. Assorted lead mounted hussars, lancers and other figures, by Britain and others. (38). *Est. £50 - £70.*

578. Nine Britain's lead mounted lancers. *Est. £40 - £50.*

579. Eleven lead mounted lancers by Britain and others. *Est. £35 - £45.*

580. Assorted cast metal figures of Indian and Afghan soldiers. (Approx. 20). *Est. £15 - £20.*

581. Assorted lead and diecast field guns, other artillery pieces, a wagon and associated Naval and military figures. *Est. £30 - £40.*

582. A cast metal Royal Marines marching band. (42). *Est. £40 - £50.*

583. Four cast metal Royal Artillery and similar horse teams. *Est. £25 - £30.*

584. Assorted lead Indian army mounted figures including lancers by Britain and others. (33). *Est. £40 - £60.*

585. A cast metal marching band. (25). *Est. £30 - £40.*

586. Assorted Hornby Dublo rolling stock, comprising two B.R. Gresley coaches, and four wagons, each boxed. *Est. £30 - £40.*

587. Eighteen assorted wagons by Hornby (14), and Mainline (4). Each boxed. *Est. £30 - £40.*

588. Three Tri-Ang Battle Space wagons, together with three Lilliput GWR coaches. Each boxed. *Est. £25 - £30.*

589. Five Wrenn wagons, comprising numbers W4323P, W4635P x2, W5004 and W5029. Each boxed. *Est. £25 - £30.*

590. Five Wrenn wagons, comprising numbers W5009 x 2, W5010, W5016 and W5026. Each boxed. *Est. £25 - £30.*

591. Two Airfix GWR locomotives, comprising a Prairie tank and a Class 1400 tank, together with an Auto-Coach and two wagons. All boxed. *Est. £30 - £40.*

592. A Hornby Dublo B. R. Castle Class Tender Locomotive, "Bristol Castle", two-rail, boxed. *Est. £25 - £30.*

593. A Hornby Dublo B. R. Duchess Class Tender Locomotive, "Duchess of Montrose", three-rail, gloss green, boxed. *Est. £25 - £30.*

594. A Hornby Dublo B. R. Bo-Bo Diesel Locomotive, three-rail, boxed. *Est. £30 - £40.*

595. Assorted Hornby Locomotives and coaches including a S. R. Tender Locomotive "Sir Dinadan", and a GWR Hall Class Locomotive, "Albert Hall", each boxed. (15). *Est. £50 - £60.*



596

596. A Hornby B. R. "Black Five" Tender Locomotive, boxed. *Est. £25 - £30.*

- 597.** Two Hornby Locomotives, including a GWR King Class "King Edward I". Each boxed. *Est. £30 - £40.*
- 598.** Two Lima GWR Locomotives, together with five GWR coaches and four assorted wagons. Each boxed. *Est. £40 - £50.*
- 599.** Four Wrenn Pulman coaches, together with two Wrenn wagons, comprising numbers W4652, W5010, W6000, W6001 x 2, and W6002. Each boxed. *Est. £35 - £45.*
- 600.** Two Mainline B. R. Locomotives together with five Mainline GWR Centenary coaches. Each boxed. *Est. £45 - £55.*
- 601.** A Wrenn Number 2218 B. R. 2-6-4 Tank Locomotive, 80033, black livery, boxed. Packer Number 6. *Est. £35 - £40.*
- 602.** A Wrenn Number W2225 L. M. S. 2-8-0 Locomotive, 8042, black livery, boxed. Packer Number 6. *Est. £40 - £50.*
- 603.** A Wrenn Number W2222 GWR Castle Class Locomotive, "Devizes Castle", green livery, boxed. No Packer Number. *Est. £45 - £55.*
- 604.** A Wrenn Number W2237 S. R. West Country Class Locomotive, "Lyme Regis", green livery, boxed. Packer Number 3. *Est. £70 - £80.*
- 605.** A Hornby Dublo collection comprising rolling stock and line side accessories. Each boxed. Approx 39 items. *Est. £80 - £100.*
- 606.** A Fleischmann O-gauge Locomotive, with three coaches and track. *Est. £30 - £40.*
- 607.** A Corgi tourist portable service station, together with a quantity of Matchbox, Corgi and other diecast models. *Est. £30 - £40.*
- 608.** Assorted tyre promotional ashtrays. *Est. £35 - £45.*
- 609.** Seventeen Corgi Rockets diecast models, including James Bond issues. Variable conditions. *Est. £40 - £50.*
- 610.** Assorted diecast models by Dinky, Corgi and others, including TV and film related examples. *Est. £25 - £30.*
- 611.** Assorted Matchbox diecast models, including boxed Super Kings, together with a small quantity of other toys. *Est. £25 - £30.*
- 612.** Assorted diecast and other model vehicles by Solido and others. Most boxed. (31). *Est. £25 - £30.*
- 613.** Seven Japanese Union Pacific Express tin plate train toys, with clockwork motors. Each boxed. *Est. £30 - £40.*
- 614.** A Bilofix construction set, in a wooden box. *Est. £10 - £20.*
- 615.** Assorted 0-gauge railway track, including boxed Chad Valley points. *Est. £15 - £20.*
- 616.** Assorted lamp bodies, lenses, and other parts, together with an oil can. *Est. £20 - £30.*
- 617.** A boxwood haberdasher's yard rule by Preston & Sons of Birmingham. *Est. £20 - £30.*
- 618.** A Mettoy Mettype junior tinplate toy typewriter. *Est. £20 - £30.*
- 619.** A quantity of Meccano including an electric motor, together with a Meccano vertical live steam boiler. *Est. £30 - £40.*
- 620.** A Dinky Builder No 1 set, boxed, together with a Hornby Dublo TPO mail van set, footbridge, level crossing, each boxed. *Est. £25 - £35.*

621. A British made aluminium battery operated motor boat, together with an Airfix building set and a quantity of Lego. *Est. £25 - £35.*

622. A quantity of Meccano, mainly crimson and green painted parts together with various instruction booklets, c.1954 - 1961. *Est. £20 - £30.*



623

623. A Japanese battery operated tin plate Overland Express Locomotive, boxed, together with a Hornby 0-gauge platform crane, also boxed. *Est. £30 - £40.*

624. A Cox Stuka Black Knight ready-to-fly model aeroplane, black livery, boxed. *Est. £80 - £100.*

625. Twenty Lledo models of "Days Gone" in a set of flock covered wall shelves. *Est. £10 - £15.*

626. Assorted diecast models by Dinky and others, c. 1950's and later, variable conditions. *Est. £40 - £50.*

627. Assorted diecast models by Dinky and others, c. 1950's and later, variable conditions. *Est. £30 - £40.*

628. Assorted lead zoo and farm animals by Britain and others. *Est. £35 - £45.*

629. A Japanese 0-gauge electric Stream-line Express Locomotive, together with a painted brass Diesel Locomotive with electric motor and another Locomotive. *Est. £40 - £50.*



630

630. A Hornby Dublo Locomotive, "Duchess of Montrose", 3-rail, together with a Graham Farish GWR pannier tank Locomotive, a German Bo-Bo Diesel Locomotive and a Hornby Dublo coach. *Est. £30 - £40.*

631. Assorted diecast models by Dinky, Spot-On, and others, c. 1950's and later, variable conditions. *Est. £20 - £30.*

632. Assorted diecast Military models, by Britain and others, variable conditions. *Est. £30 - £40.*

633. Four diecast models by Dinky and Corgi, including a Corgi Junior James Bond Aston Martin, each mint or near mint condition and in original packaging. *Est. £30 - £40.*

634. Assorted diecast models by Dinky, Corgi and Matchbox, most in original packaging, together with a Dinky number 054 Railway Station personnel part set, boxed. *Est. £30 - £40.*

635. A Dinky John Steed New Avengers Jaguar XJ 5.3C with a hand applied metallic blue paint finish, with gold side stripe and seated driver figure. *Est. £50 - £70.*



635



642

636. A Britain's "Racing Colours of Famous Owners" horse and jockey, Sir Hugo Cunliffe Owen, boxed; box is worn, and jockey has broken leg. *Est. £20 - £25.*

637. Assorted children's books, including Biggles stories and others of Beatles and other pop music interest. *Est. £20 - £30.*

638. Assorted diecast metal tinplate and plastic model Military Jeeps, by Tri-Ang Minic, Dinky and others, some in original packaging. *Est. £50 - £70*

639. Assorted diecast metal and other model Jeeps, including Military examples, variable conditions. *Est. £30 - £40.*

640. A gauge 1 (approximately), scratch-built live steam 0-4-0 tank Locomotive, green livery, in a wooden transportation case. *Est. £80 - £100.*

641. A Tri-Ang Minic motorway collection, comprising twenty model vehicles, track and accessories. *Est. £50 - £70.*

642. A Chad Valley aluminium model racing car, cream and red, with a clockwork motor, unboxed. *Est. £50 - £70.*

643. A French Hornby clockwork model speedboat, "Alcyon", yellow and cream, boxed. *Est. £60 - £80.*

644. A Hornby clockwork speedboat, "Condor", red and cream, (some over-painting), boxed. *Est. £30 - £50.*

645. A Tri-Ang Number 3 caterpillar tractor, dark green with red wheels and a chain drive clockwork mechanism, unboxed. *Est. £50 - £70.*

646. A Tri-Ang Tiger tank, dark green with a clockwork mechanism, unboxed. *Est. £40 - £60.*

647. A German tinplate Porsche / Mercedes style sports car, with a clockwork mechanism, together with a Tri-Ang number 2 tractor, green with a clockwork mechanism, a Japanese tinplate fire engine and a model motor car chassis. *Est. £40 - £60.*

648. A 00-gauge model railway collection, comprising locomotives and rolling stock, most unboxed. *Est. £35 - £45.*

649. An oil on board painting of a British Railways electric multiple unit in blue livery, with destination Rugby, signed Ollier. Approx. 45 cms x 55 cms, and framed. Together with a modern London Underground poster, "Gardens of Earthly Delight, by Tube", framed and glazed. *Est. £40 - £50.*

650. A J R R Tolkien collection, comprising books and a calendar. *Est. £10 - £20.*

- 651.** Assorted toys, comprising an Alps clockwork elephant, boxed, a Tri-Ang Minic plastic Hillman Minx, unboxed, two Corgi Classics model cars, each boxed, and a small standard Vanguard with a clockwork mechanism, unboxed. *Est. £40 - £50.*
- 652.** A Dinky number 914 A.E.C. Articulated lorry, red with a grey trailer, red tailboard, green tilt, and red plastic hubs. Good condition, boxed, the box, however, is worn. *Est. £30 - £40.*
- 653.** A Corgi number 320 "The Saint" Jaguar XJS, white, near mint, boxed. *Est. £20 - £30.*
- 654.** A Lone Star Flyers number 19, Volvo 1800S, metallic red, near mint, boxed. *Est. £20 - £25.*
- 655.** Assorted diecast models by Dinky, Corgi, Matchbox and others, variable conditions, most in original packaging. *Est. £80 - £100.*
- 656.** Assorted Schuco tinplate model cars, each with clockwork mechanism, variable conditions, some incomplete, in a later box. *Est. £40 - £50.*
- 657.** Assorted tinplate and plastic models, most with clockwork mechanisms, variable conditions. *Est. £25 - £35.*
- 658.** A collection of Beatles scrapbooks and albums of pictures. *Est. £20 - £30.*
- 659.** Assorted Military toys and collectables including a Blue-box Combat Doctor set, apparently complete, and a Louis Marx German soldier, approx. 15 cms high, and a painted wooden yo-yo with stencil sprayed Swastikas. *Est. £25 - £35.*
- 660.** Assorted diecast models by Gama, Matchbox and others, all but one in original packaging. *Est. £25 - £35.*
- 661.** Assorted diecast and other models by Matchbox, Corgi and others, many in original packaging. *Est. £20 - £30.*
- 662.** Assorted diecast and plastic models by Corgi, Matchbox and others, variable conditions, most unboxed. *Est. £20 - £30.*
- 663.** A 00-gauge model railway collection comprising a Hornby saddle tank Locomotive, "Smokey Joe", various Tri-Ang coaches and other items, many boxed. *Est. £25 - £35.*
- 664.** An HO gauge Roco German railway electric pantograph Locomotive, green livery, boxed. *Est. £20 - £30.*
- 665.** Assorted toys comprising a Marx Za-Zoom battery operated motor sound unit, boxed; a Berwick Batman costume, boxed, and other items. *Est. £20 - £30.*
- 666.** A large collection of Meccano comprising red, green, unpainted and other parts, in a variety of cases and wooden chests. *Est. £80 - £100.*
- 667.** Assorted toys, comprising a Berwick Speed Flippers pinball game, various Walt Disney nursery decorations, toy soldiers, model engineering publications and other items. *Est. £20 - £25.*
- 668.** Two prints of South Western Company Royal Mail packet paddle steamers, each approx. 24.5 cms x 35 cms. *Est. £15 - £25.*
- 669.** A Meccano Mogul pressed steel army truck, No. 3287, boxed. *Est. £15 - £20.*
- 670.** A collection of old rolling stock. *Est. £20 - £30.*

671. A box containing Lego, Sunny Jims and Matchbox track etc. *Est. £20 - £30.*

672. Old toys, jigsaws, Buster books etc. (Two boxes). *Est. 320 - £30.*

673. A Bayko Converting Set, boxed. *Est. £20 - £30.*

674. A Bayko boxed building set. *Est. £20 - £30.*

675. A good boxed Meccano outfit, No 6 set. *Est. £30 - £50.*

676. An NSU Quickly moped in grey (no registration). *Est. £500 - £600.*

677. An original Western Airlines Skybird poster. Signed, framed and glazed. *Est. £150 - £200.*

678. An unusual novelty amusement arcade machine mounted with a baker, entitled "Scoopy". *Est. £50 - £80.*

678A. A novelty amusement arcade machine, entitled "Lucky Eggs". *Est. £50 - £80.*



676

Clothing & Textiles

THE PROPERTY OF A GENTLEMAN OF TITLE:

679. A handmade Djellaba in grey with rope work decoration. Labelled "Khankhalily Bazar". Est. £80 - £100.

680. A deep blue Kaftan with gold and red vertical stripes and tassel ties. Est. £80 - £100.

681. A lined handmade coat of multi coloured design with split sleeves and round buttoned collar. Est. £80 - £100.

682. A two tone red quilted jacket with ruffs to sleeves and neckline and buttoned front. Est. £50 - £80.

683. An olive green silk jacket with ruffs to sleeves and neckline and buttoned front. Est. £50 - £80

684. An Igal in black and gold with wire work body and tassel drops. Est. £30 - £50.

685. An Igal in black and gold with wire decoration and tassel drop. Est. £30 - £50.

686. A charcoal grey Kaftan. Est. £30 - £50.

687. A muslin Djellaba with two colour wire decorated collar to matching drop. Est. £80 - £100.

688. An intricately embroidered Djellaba of floral design. Est. £30 - £50.

689. An ivory silk wedding dress with lace panels to train, long sleeves and cowl neckline. Est. £50 - £80.

690. An ivory Kaftan with lacework front. Est. £30 - £50.

691. A handmade black silk Djellabas flamboyantly decorated with gold flowers and intricate embroidered rope work. Est. £150 - £200.

691A. A good boxed top hat retailed by Lock & Co. in grey velour with black band. Est. £30 - £40.



679

Furniture

692. An attractive rosewood hall table with stretcher base. Est. £80 - £120.

693. An attractive mahogany dressing mirror with brass mounts and hairy feet. Est. £250 - £300.

694. A good pine two door kitchen table. Est. £50 - £80.

695. An Antique mahogany four drawer chest on bracket feet. Est. £60 - £80.

696. An Antique carver chair on spindle bases. Est. £30 - £50.

697. A set of three Antique country chairs. Est. £30 - £50.

698. An Antique pedestal table together with one other. Est. £40 - £60.



699

699. An Antique mahogany chest of drawers on bracket feet. Est. £100 - £150.

700. An attractive floral decorated Continental side table heavily mounted with flowers and leaves with brass mounts. Est. £300 - £350.

701. A small mahogany bow front chest of drawers. Est. £30 - £50.



700

702. A large pine bookcase with sliding doors. Est. £30 - £50.

703. GILLOWS: A good pair of library tables with three drawers on graduated and reeded supports. Approx. 80 cms x 186 cms. Est. £1000 - £1200.

704. A small mahogany toilet mirror on plank base. Est. £30 - £50.

705. A mahogany chest of five drawers on bracket feet. Est. £50 - £80.

706. A good Georgian mahogany bureau with fall front and reeded base. Est. £100 - £150.

707. A small oak nest of three tables. Est. £20 - £30.

708. A small mahogany single drawer toilet mirror. Est. £20 - £30.

709. A good oak monk's bench with carved decoration. Est. £30 - £50.

710. A good oak tilt top coffer with panelled sides. Est. £30 - £50.

711. A gilt framed overmantle mirror. Est. £30 - £50.

712. A small mahogany Victorian three drawer desk. Est. £40 - £60.

713. An Antique oak hinged top coffer with carved front and panelled side. *Est. £80 - £100.*

714. A good mahogany drop leaf table on pad feet. *Est. £60 - £80.*

715. A large bamboo framed tapestry on bracket feet. *Est. £80 - £120.*

716. A tall oak corner cupboard. *Est. £60 - £80.*

717. An Antique mahogany single drawer side table with brass handles. *Est. £30 - £50.*

718. An Antique chest of five drawers with brass handles on bracket feet. *Est. £150 - £200.*

719. A Victorian papier-mâché sewing box with fitted interior on pedestal base. *Est. £100 - £150.*

720. A good Continental hall cupboard with carved decoration. *Est. £100 - £150.*

721. A good Antique mahogany chest on chest with bracket feet and brass handles. *Est. £300 - £400.*

722. A large tapered column on reeded base. *Est. £100 - £150.*

723. BRIGHTS OF NETTLEBED: A good walnut twin pedestal table and leaf together with six matching chairs. *Est. £100 - £120.*

724. A good pair of impressive figures on columned bases. Approx. 8 FT tall. *Est. £1000 - £1500.*

725. An attractive rosewood sewing box on sweeping feet with bead decoration. *Est. £300 - £400.*

726. A good case of Antique stamps and albums. *Est. £80 - £100.*



496

TERMS AND CONDITIONS OF SALE

Whittons carries on business with bidders, buyers and all those present in the auction room prior to or in connection with a sale on the following general conditions and on such other terms, conditions and notices as may be referred to herein.

1. BIDDING PROCEDURES AND THE BUYER

a) Bidders are required to register their particulars prior to bidding and to satisfy any security arrangements before entering the auction room to view or bid. We do not accept bids from any person who has not completed and delivered to us one of our Bidding Forms. You will be asked for photographic proof of identity, residence and references. Bids will not be accepted if you fail to provide sufficient identification when asked to produce it. We may also ask for a deposit to be paid prior to bidding. We may refuse entry to a Sale to any person even if that person has completed a Bidding Form.

b) The maker of the highest bid accepted by the Auctioneer conducting the sale shall be the buyer at the hammer price and any dispute regarding a bid shall be made and settled at the Auctioneer's absolute discretion, and may reoffer the Lot during the course of the auction or otherwise. The Auctioneer shall act reasonably in exercising this discretion. The Auctioneer's decision is final.

c) Bidders shall be deemed to act as principals.

d) Once made no bid can be withdrawn.

e) Our right to bid on behalf of the seller is expressly reserved up to the amount of any reserve and the right to refuse any bid is also reserved.

2. INCREMENTS

a) Bidding increments shall be at the Auctioneer's sole discretion.

3. THE PURCHASE PRICE

a) The buyer shall pay the Hammer Price together with a premium thereon of 15% plus VAT on the premium at the rate imposed by law on all lots. Lots purchased online will incur an additional charge in the sum of 3% of the Hammer Price plus VAT at the rate imposed by law.

4. VALUE ADDED TAX

a) Where a lot is marked with an asterisk (*), VAT will be payable at the standard rate as imposed by law on the Hammer Price as well as being added to the buyer's premium.

b) Where a lot is marked with a double asterisk (**), VAT will be charged at a reduced VAT rate (currently 5%) to the gross price of that lot being the Hammer Price plus the buyer's premium.

c) Where no asterisk is marked against a lot, no VAT is payable on the Hammer Price, and is deemed to have been sold under the Auctioneer's Margin Scheme. VAT included within the premium is not recoverable as input tax.

5. PAYMENT

a) Your obligation to pay for a lot occurs when the Auctioneer's hammer has fallen in respect of the lot.

b) Immediately a lot is sold you will give to us, if requested, proof of identity and pay to us the total amount due in cash or in such other way as agreed by us. Any payments by

you to us may be applied by us towards any sums owing from you to us on any account whatever without regard to any directions of you or your agent, whether express or implied.

c) No cash payments will be accepted over £6000.00 (Six Thousand Pounds Sterling).

d) Payment is acceptable in cash, credit or debit card. A handling charge of 2% will be added to all purchases made by credit card. Payments made by debit card will incur no extra charge. Payment can be made by direct bank transfer into our bank account.

e) Payment of the purchase price and all other sums payable by you to Whittons must be made in the currency in which the sale was conducted within seven working days following the sale. Payment must be received in cleared funds by the seventh working day following the sale. Failure to provide cleared funds within this time may result in remedies being exercised as stated in condition 7.

6. TITLE AND COLLECTION OF PURCHASES

a) Ownership of the lots purchased shall not pass to the buyer until payment has been made in full to us of the total amount due, to include all premiums, charges and postal costs where applicable, and received in cleared funds by Whittons.

b) Responsibility of the lot passes to the buyer at the fall of the Auctioneer's hammer. The seller will no longer be responsible for the lot thereafter. The buyer will indemnify the seller and keep the seller fully indemnified from and against all claims, proceedings, costs, expenses and losses arising in respect of any injury, loss and damage caused to the lot after the fall of the Auctioneer's hammer until the buyer obtains full title to it.

c) You shall, at your own risk and expense take away any lots that you have purchased and paid for in full, not later than seven working days following the sale or upon the clearance of any cheque used for payment after which you shall be responsible for any removal, storage and insurance charges. No purchase can be claimed or removed until it has been paid for in full.

d) Title to the lot remains in and is retained by the seller until payment has been made in full to us of the total amount due, to include all premiums, charges and postal costs where applicable, and received in cleared funds by Whittons.

e) All items are held at the risk of the buyer. If they are not removed within fourteen working days of the sale the auctioneers will instruct a local carrier to remove them for storage. The buyer will be responsible for paying all charges incurred and for making arrangements in advance for the removal of items from their store after payment of their charges and on production of our receipt for the items.

7. REMEDIES IN THE EVENT OF NON-PAYMENT OR PURCHASES NOT BEING COLLECTED ON TIME

If any lot is not paid for in full and taken away in accordance with these conditions or if there is any other breach of these conditions, we, as agent for the seller and on our own behalf, shall at our absolute discretion and without prejudice to any other rights we may have be entitled to exercise one or more of the following rights and remedies: To proceed against you for damages for breach of contract;

a) To rescind the sale of that lot and/or any other lots sold by us to you;

b) To resell the lots (by auction or private treaty) in which case you shall be responsible for any resulting deficiency in the total amount due (after crediting any part payment and adding any resale costs). Any surplus so arising shall belong to the seller;

c) To remove, store and insure the lot at your expense and, in the case of storage, either at our premises or elsewhere;

d) To charge interest at a rate not exceeding 1.5% per month on the total amount due to the extent it remains unpaid for more than seven working days after the sale;

e) To retain that or any other lot sold to you until you pay the total amount due

f) To reject or ignore bids from you or your agent at future auctions or to impose conditions before and such bids shall be accepted.

g) To apply any proceeds of sale of other lots due in future becoming due to you towards the settlement of the total amount due and to exercise a right to possession (lien) of any of your property in our possession for any purpose until the debt due is satisfied.

h) We shall, as agent for the seller and on our own behalf pursue these rights and remedies only so far as is reasonable to make appropriate recovery in respect of breach of these conditions.

8. THIRD PARTY LIABILITY

All members of the public enter our premises at their own risk. They must make themselves aware of all security and fire arrangements in the building and to note the layout of the accommodation. Accordingly neither the Auctioneer nor our employees or agents shall incur any liability for death or personal injury (except as required by law by reason of our negligence) or similarly for the safety of persons visiting prior to or at a sale.

9. RIGHT TO REFUSE ENTRY

Whittons shall have the right at our discretion, to refuse admission to our premises or attendance at our auctions by any person.

10. COMMISSION BIDS

We will, if so instructed, execute bids on a buyer's behalf. The bid must be received by us no later than one hour prior to the commencement of the sale for which the lot is being sold. The bid must be clearly written or typed, and must have the full name, address and telephone number of the person bidding, and signed by the person making the bid. Neither the Auctioneer nor our employees shall be held responsible for any failure to do so save where such failure is unreasonable. Where two or more commission bids are received at the same price, the Auctioneer reserves the right and absolute discretion to choose which bid shall prevail. It will be assumed that the prospective buyer has carefully inspected the lot and has satisfied themselves as to its condition prior to leaving the commission bid. No bids can be retracted once the item has been sold.

11. WARRANTY OF TITLE AND AVAILABILITY

The seller warrants to the auctioneers and the buyer that the seller is the true owner of the property consigned or is properly authorised by the true owner to consign it

for sale and is able to transfer good title to the property free from any third party claims.

12. AGENCY

The auctioneers normally act as agent only and disclaim any responsibility for default by sellers or buyers.

13. TERMS OF SALE

The seller acknowledges that Lots are sold subject to the stipulations of these conditions in their entirety and on the terms of consignment as notified to the consignor at the time of the entry of the lot.

14. DESCRIPTIONS

Whittons will not be held responsible for misrepresentation, and any wording or description either spoken written discussed published or otherwise shall not form the basis of any contract. Items are described as opinion only, and whilst due diligence is taken to make accurate descriptions, it may be impracticable to ensure accuracy in its entirety. All items are therefore sold as seen and prospective buyers must inspect view and take their own independent expert advice should they so wish before bidding on any item in any sale and must satisfy themselves as to the accuracy of any description applied to a lot. Prospective buyers bid on the understanding that representations or statements as to authorship genuineness origin date age provenance condition size shape weight colour etcetera are opinions only. Subject to the foregoing neither we the auctioneer nor our employees or agents nor the seller accept liability for the correctness of such opinions and all conditions and warranties, whether relating to description, condition or quality of lots, express, implied or statutory, are hereby excluded. Private treaty sales made under these conditions are deemed to be sales by the auction for purposes of consumer legislation.

Notwithstanding this condition any Lot which proves to be a deliberate forgery as defined may be returned to us by you within 14 days of the auction provided it is in the same condition as when bought, and is accompanied by particulars identifying it from the relevant catalogue description and a written statement of defects. If we are satisfied from the evidence presented that the Lot is a deliberate forgery we shall refund the money paid by you for the Lot including any buyer's premium provided that

- a) if the catalogue reflected the accepted view of scholars and experts as at the date of sale or
- b) you personally are not able to transfer a good and marketable title to us, you shall have no rights under this condition.

The right of return provided by this Condition is additional to any right or remedy provided by law or by these Conditions of Sale.

15. ONLINE BIDDING

Whittons may offer an online bidding service via www.the-saleroom.com for bidders who cannot attend the sale. In completing the bidder registration on www.the-saleroom.com and providing your credit card details and unless alternative arrangements are agreed with Whittons you:

- a) authorise Whittons if they so wish to charge the credit card given in part or full payment including all fees for items successfully purchased in the auction via www.the-saleroom.com and

- b) confirm that you are authorised to provide these credit card details to Whittons through www.the-saleroom.com and agree that Whittons are entitled to dispatch the goods to the card holder name and card holder address provided in fulfilment of the sale.

Please note that any lots purchased via the www.the-saleroom.com live auction service will be subject to an additional 3% commission charge + VAT at the standard rate imposed on the hammer price. Buyers registering to bid through www.the-saleroom.com must submit credit/debit card details to register. Whittons will take a deposit of maximum £500.00 sterling from the registered credit / debit card at the discretion of the auctioneer. If the buyer is unsuccessful this deposit will be refunded. If successful the deposit will be deducted from the final invoice. The deposit will be subject to variables in exchange rates and bank charges that the buyers' bank might levy. The buyer will be liable for such charges.

16. CHEQUES

Cheques will only be accepted for payment at the auctioneer's discretion. No purchases will be removed from the saleroom unless cleared funds have been received by us. Any prospective purchasers who wish to pay by cheque must inform the auctioneers at least 7 working days before the sale. It will be at the auctioneer's discretion whether to take a cheque in lieu of prospective purchases prior to the sale and allowing for clearance of the cheque. If you are later unsuccessful in your purchase, the amount of your cheque will be refunded. Payment in cheque will not be acceptable on the day of the sale if prior arrangement has not been made with the auctioneer but if you wish to pay using this method then your purchases will be withheld until full clearance of the cheque has been granted. Only authorised payments by card or cash will be allowed to allow removal of goods on sale day.

17. TELEPHONE PAYMENTS

Payments will not be accepted if made at the telephone for invoices of more than £300.00 unless the buyer is known to the auctioneer. Card payments can be made in person or by bank transfer cash up to £6000.00 (Six Thousand Pounds Sterling).

18. SELLER'S COMMISSION AND CHARGES

Commission is charged at 15% plus VAT at the standard rate on the hammer price. Items which sell for less than £20.00 will incur a commission charge of £5.00 plus VAT at the standard rate. No charge will be made for items which fail to sell. Withdrawn lots may incur an administration charge if withdrawn once the item has been published for sale. No charges are made for catalogue illustration photography or advertising unless special illustration photography or advertising is deemed necessary and not without the consent of the vendor. A charge of £3.00 per item will be charged per item for each item that requires electrical testing.

19. RESERVES

Items will only be accepted with reserve which, in the auctioneer's opinion, are likely to realise at least £20.00 or more. Any item worth less than this value will be deemed to be entered for sale without reserve. Any items which are taken with a reserve price will be accepted on the basis that the auctioneer will have discretion to sell that item for 10% less than the reserve if a buyer at that price exists on the day. Whittons can

refuse to accept any item for sale where, in the auctioneer's opinion, the reserve price suggested by the seller is too high and/or the item would not sell.

20. SELLER'S CONDITIONS

- a) All sellers must sign the declaration confirming conditions of sale on the receipt which is given to you when you submit goods to us for sale. All items handed over to us are assumed to be given to us for the purpose of entering those lots for sale by auction.
 - b) All sellers must sign to confirm that they are the true owners of the goods entered for sale and that they have legitimate title to those goods free of any encumbrance and free from any third party or that they have authority to dispose of the goods on behalf of the true owner and are able to transfer good and marketable title to the property free from any third party claims.
 - c) All goods entered for sale must comply with all safety regulations under the Consumer Protection Act and the Furnishing Fire / Safety Regulations 1988.
 - d) The seller authorises Whittons to deduct commission at the rates quoted and by the signing the form, the seller is deemed to have accepted the terms and conditions of sale.
 - e) The seller has a duty to disclose all defects restorations or alterations to the goods at the time they are entered for sale and is duty bound to bring such defects restorations or alterations to auctioneer's attention in writing. Failure to do so notwithstanding any description of the goods given by the auctioneers can result in the sale being rescinded and the seller being responsible for all allied costs incurred by the auctioneer and the buyer.
 - f) The seller warrants in respect of any item of mechanical or electrical equipment that it is:
 - a. in working order
 - b. reasonably fit for the purpose for which it is designed or adapted
 - c. that it can be used safely and without risk of causing injury or damage and
 - d. will indemnify Whittons against any loss or damage suffered in consequence of any breach of the above warranty and undertaking.
 - g) The Vendor gives Whittons full and absolute right to photograph and illustrate any lot placed with them for sale and to use such photographs and illustrations at any time at their absolute discretion whether or not in connection with the auction.
 - h) Sellers selling any assets of their business must disclose whether they are registered for value added tax (VAT) at the time the goods are presented for sale and disclose the VAT registration number and indicate clearly whether the goods are to be sold under the margin scheme and where this is the case, VAT will not be recoverable by the seller.
- English law applies to the interpretation of these Conditions.



THE FINE ART AUCTION ROOMS

DOWELL STREET · HONITON · DEVON EX14 1LX

01404 517000 · 01392 345454

INFO@WHITTONSAUCTIONS.CO.UK

WWW.WHITTONSAUCTIONS.CO.UK